

Please note that the Native Communities research guides were created in 2018 to help users search the [National Archives Catalog](#) for records relating to Native American communities. The guides are under review, and new versions may be released as information is updated.



National Archives online catalog search term ideas and Citizen Archivist Codes for the

NATIVE PEOPLE OF THE NORTHERN PLAINS

Research Guides for both historic and modern Native Communities relating to records held the National Archives



Iowa

[Introduction Page](#)

[Historic Native Communities](#)

[Modern Native Communities](#)

Nebraska

[Introduction Page](#)

[Historic Native Communities](#)

[Modern Native Communities](#)

South Dakota

[Introduction Page](#)

[Historic Native Communities](#)

[Modern Native Communities](#)

Minnesota

[Introduction Page](#)

[Historic Native Communities](#)

[Modern Native Communities](#)

North Dakota

[Introduction Page](#)

[Historic Native Communities](#)

[Modern Native Communities](#)



Photograph of an Old Indian Camp on Lake Isabella, Minnesota, June 24, 1921.
National Archives.

<https://catalog.archives.gov/id/2127399>

Iowa Native Communities

To perform a search of more general records of Iowa's Native People in the [National Archives Online Catalog](#), use **Advanced Search**. Enter **Iowa NOT Cherokee AND NOT Alaska** in the search box and **75** in the Record Group box (Bureau of Indian Affairs). The results of this search will be mixed. Iowa was both a long and short-term home for many tribes as they were pushed further and further West when the United States was just in its infancy. The Iowa Tribe was relocated along with them. All this results in the search term returning many records unrelated to the state of Iowa. It will be most useful to use search terms specific to individual tribes listed in the [Historic and Modern](#) sections below.

There are several great resources available for general information and material for kids about the Native People of Iowa, such as the [Native Languages](#) and [National Museum of the American Indian](#) websites. Type **Iowa** into the main search box for both.

Related state agencies and universities may also hold records or information about these communities. Examples might include the [Iowa State Archives](#), the [State Historical Museum of Iowa](#), and the [University of Iowa Native American Library Guides](#).

Historic Iowa Native Communities

Federally Recognized Native Communities in Iowa (2018)

[Sac & Fox Tribe of the Mississippi in Iowa](#)

Document Sample



Sac and Fox Sanatorium, Toledo, Iowa, ca.1949-1971. National Archives. <https://catalog.archives.gov/id/41089556>

Historic Iowa Native Communities

For a map of historic language areas in Iowa, see [Native Languages](#).

Instructions: Slashes separate search terms and phrases. **Copy and paste exact phrase** into the [Online Catalog](#), including quotation marks, if present. Always be willing to experiment with search terms. Quoted phrases return very different results than non-quoted phrases. Using the geographic location or most relevant word(s) from the tribal name with one of the following words may also prove beneficial: **Indian** (most useful), **Native**, **Tribe**, **Reservation**, or **Village**. Be sure to link to modern tribal pages. They contain current information and more possible search terms.

Historic Tribes	Suggested Online Catalog search term(s)	Associated Federally Recognized Tribal Communities 2018
Dakota Sioux	"Sioux Indian" / Wahpeton / Wahpekute / "Santee Sioux" / Sisseton / Mdewakanton / "Lower Sioux" / "Upper Sioux"	Minnesota: Lower Sioux Indian Community in the State of Minnesota Prairie Island Indian Community in the State of Minnesota Shakopee Mdewakanton Sioux Community of Minnesota Upper Sioux Community, Minnesota Montana: Assiniboine and Sioux Tribes of the Fort Peck Indian Reservation, Montana (See Home Page – Northern Plateau) Nebraska: Santee Sioux Nation, Nebraska North Dakota: Spirit Lake Tribe, North Dakota North and South Dakota: Standing Rock Sioux Tribe of North & South Dakota South Dakota: Crow Creek Sioux Tribe of the Crow Creek Reservation, South Dakota Flandreau Santee Sioux Tribe of South Dakota Sisseton-Wahpeton Oyate of the Lake Traverse Reservation, South Dakota
Illinois (Illini)	"Illini Tribe" / Kaskaskia Indian / "Cahokia Mound" / "Cahokia Indian" / "Peoria Indian" / Tamaroa NOT Vessel AND NOT "Coast Guard" / Moingwena / Michigamea / Tapouara	Oklahoma: Peoria Tribe of Indians of Oklahoma (See Home Page – Central Plains)
Ioway	Ioway Indian NOT Energy	Kansas and Nebraska: Iowa Tribe of Kansas and Nebraska Oklahoma: Iowa Tribe of Oklahoma (See Home Page – Central Plains)
Missouria	Missouria / Missouria Indian / "Otoe-Missouria"	Oklahoma: Otoe-Missouria Tribe of Indians, Oklahoma (See Home Page – Central Plains)
Otoe	Otoe Indian NOT County / "Otoe Indian" / "Otoe-Missouria"	Oklahoma: Otoe-Missouria Tribe of Indians, Oklahoma (See Home Page – Central Plains)

Sac & Fox Tribe of the Mississippi in Iowa

Sauk and Meskwaki (Sac and Fox Confederacy)

To hear modern Native Community names spoken aloud, see [National Indian Law Library](#).

Always consult the Native People themselves for most accurate information, either through their website or in person.

Current Community Headquarters: Tama, IA

Citizen Archivist Catalog Tag: NT366

To find documents already tagged, copy and paste this tag into the [Advanced Online Catalog Search Form](#) in the "Tags" box. If documents are not tagged or you wish to contribute, see the [Citizen Archivist Program](#).

Personal archival assistance:

For additional help in finding records of the Sac & Fox in Iowa Community, email the archivists at the National Archives at Chicago (chicago.archives@nara.gov) or contact the [National Archives in Washington D.C.](#) Organizations listed on the [Iowa Native Communities](#) page may also provide research assistance.

Searching in the [National Archives Online Catalog](#)

Slashes (/) separate individual search strings. Copy and paste or type exactly, including quotation marks if present. Also, try using a word from each of the community's other names and locations. See associated video for more detailed instructions.

Suggested Search Terms: Meskwaki / Mesquakie / "Sac and Fox" Iowa NOT Manual AND NOT Treasury

Related Searches: "Tama County" Iowa / "Marshall County" Iowa / "Palo Alto County" Iowa

This community may also have been recorded as:
 Meskwaki / Mesquakie / Iowa Sac and Fox / Meskwaki Nation / Mesquakie Indian Settlement / Musquaque / Sac and Fox / Sauk and Fox / Thakiwaki / Sa ki wa ki / Renards (French) / Sac and Fox Reservation / Meskwaki Settlement

Additional Resources: The following sources may provide important background information and ideas for additional search terms.

Sac & Fox in Iowa website: <https://www.meskwaki.org/>

Wikipedia (general information only): https://en.wikipedia.org/wiki/Sac_and_Fox_Tribe_of_the_Mississippi_in_Iowa and https://en.wikipedia.org/wiki/Sauk_people and <https://en.wikipedia.org/wiki/Meskwaki>

Also see: Tama County Communities at <https://tamacountyiowa.org/communities/meskwaki/>

Links to additional information (search each by tribe name):

Federal Register (recent rulings and issues): <https://www.federalregister.gov/>

Native Languages: <http://www.native-languages.org>

National Indian Law Library: <http://www.narf.org/nill/tribes/>

American Philosophical Society Indigenous Subject Guide: <https://search.amphilsoc.org/natam/search>

Library of Congress: <https://www.loc.gov/>

Bureau of Indian Affairs (BIA) Records (Record Group 75):

To focus on BIA records in the Online Catalog, use "advanced search" and enter 75 into the Record Group field.

Although important, the BIA is only one of many Federal agencies containing important records of Native Communities. For various reasons there are often periods of time where BIA records are not available for individual tribes. Other techniques should be used for these periods, such as searching by geographic area and/or time-period and widening the search to include ALL Federal agencies.

Community records could also be "buried" in BIA agency files not described in the Online Catalog in great enough detail to be searched directly by community name. Doing an advanced search using one or two words from the BIA office name or the entire office name in quotes, along with Record Group 75, may be beneficial. Some BIA offices known to hold **Sac & Fox in Iowa** records follow:

1824-1847 Sac and Fox Agency, 1866-1947 Sac and Fox Agency and Sanatorium, 1895- 1947 Tama Agency, 1949-present Minneapolis Area Office.

Minnesota Native Communities

To perform a search of more general records of Minnesota's Native People in the [National Archives Online Catalog](#), use **Advanced Search**. Enter **Minnesota** in the search box and **75** in the Record Group box (Bureau of Indian Affairs). Additional records can be found using a general search with the search phrase "**Minnesota Indian**" however it is always most useful to use search terms specific to individual tribes listed in the [Historic](#) and [Modern](#) sections below.

There are several great resources available for general information and material for kids about the Native People of Minnesota, such as the [Native Languages](#) and [National Museum of the American Indian](#) websites. Type **Minnesota** into the main search box for both.

Related state agencies and universities may also hold records or information about these communities. Examples might include the [Minnesota State Historical Society Archives page](#), the [Minnesota Indian Affairs Council](#), and "[Explore Minnesota's](#)" [Native American Heritage website](#).

Historic Minnesota Native Communities

Federally Recognized Native Communities in Minnesota (2018)

[Lower Sioux Indian Community in the State of Minnesota](#)
[Minnesota Chippewa Tribe, Minnesota](#)
[Prairie Island Indian Community in the State of Minnesota](#)
[Red Lake Band of Chippewa Indians, Minnesota](#)
[Shakopee Mdewakanton Sioux Community of Minnesota](#)
[Upper Sioux Community, Minnesota](#)

Document Sample



Mankato, Minnesota. December 26, 1862. The largest mass hanging in the history of the United States, following the Dakota War in Minnesota. This war was the result of misdirection of supplies that were supposed to go to the starving tribe. The remaining captives were sent to the Crow Creek Reservation (and some later to Flandreau) in South Dakota in May of 1863. National Archives.

<https://catalog.archives.gov/id/7720457>

Historic Minnesota Native Communities

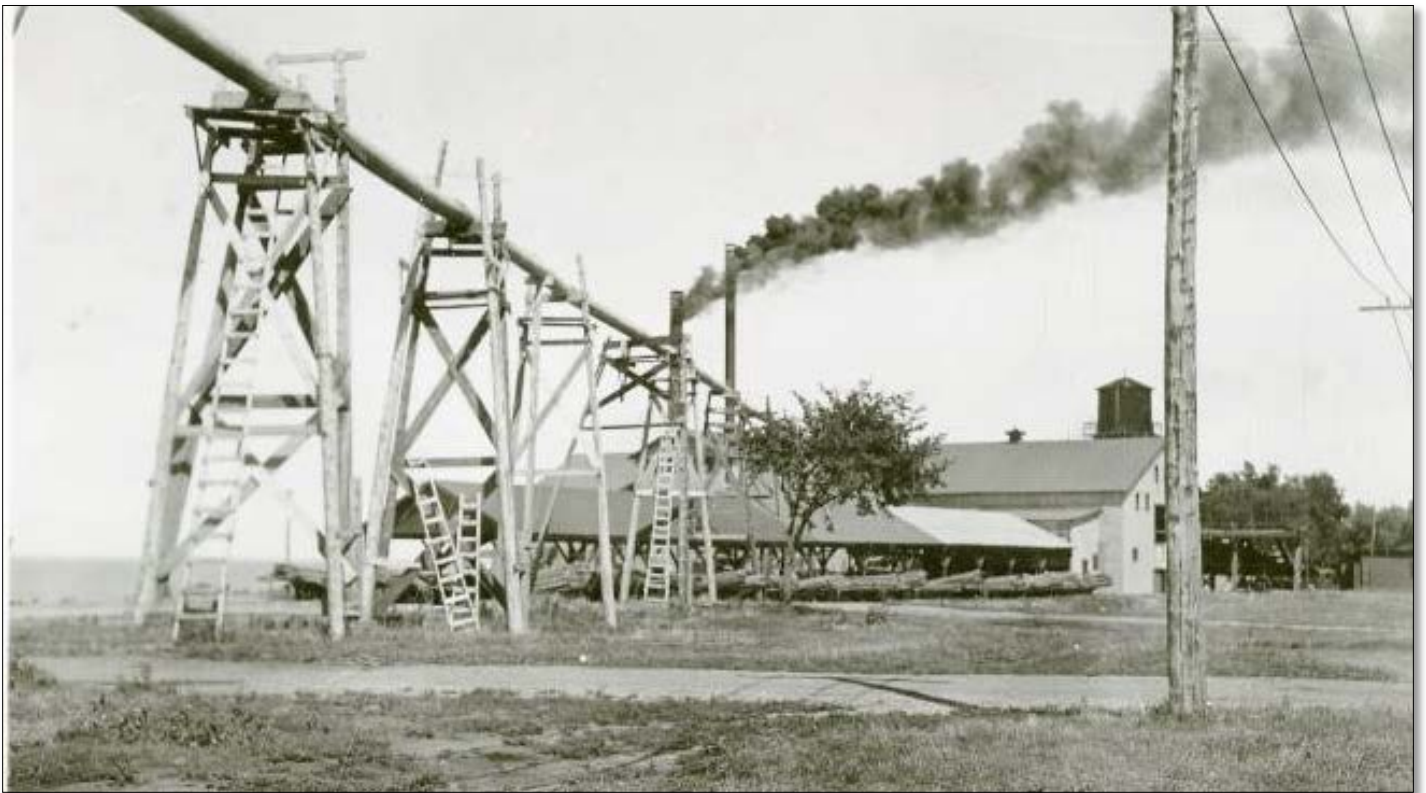
For a map of historic language areas in Minnesota, see [Native Languages](#).

Instructions: Slashes separate search terms and phrases. **Copy and paste exact phrase** into the [Online Catalog](#), including quotation marks, if present. Always be willing to experiment with search terms. Quoted phrases return very different results than non-quoted phrases. Using the geographic location or most relevant word(s) from the tribal name with one of the following words may also prove beneficial: **Indian** (most useful), **Native**, **Tribe**, **Reservation**, or **Village**. Be sure to link to modern tribal pages. They contain current information and more possible search terms.

Historic Tribes	Suggested Online Catalog search term(s)	Associated Federally Recognized Tribal Communities 2018
Dakota Sioux	"Sioux Indian" / Wahpeton / Wahpekute / "Santee Sioux" / Sisseton / Mdewakanton / "Lower Sioux" / "Upper Sioux"	<p>Minnesota: Lower Sioux Indian Community in the State of Minnesota Prairie Island Indian Community in the State of Minnesota Shakopee Mdewakanton Sioux Community of Minnesota Upper Sioux Community, Minnesota</p> <p>Montana: Assiniboine and Sioux Tribes of the Fort Peck Indian Reservation, Montana (See Home Page – Northern Plateau)</p> <p>Nebraska: Santee Sioux Nation, Nebraska</p> <p>North Dakota: Spirit Lake Tribe, North Dakota</p> <p>North and South Dakota: Standing Rock Sioux Tribe of North & South Dakota</p> <p>South Dakota: Crow Creek Sioux Tribe of the Crow Creek Reservation, South Dakota Flandreau Santee Sioux Tribe of South Dakota Sisseton-Wahpeton Oyate of the Lake Traverse Reservation, South Dakota</p>
Ojibwe (Chippewa)	Ojibwe / Chippewa Indian	<p>Michigan: Bay Mills Indian Community, Michigan (See Home Page – Great Lakes) Grand Traverse Band of Ottawa and Chippewa Indians, Michigan (See Home Page – Great Lakes) Keweenaw Bay Indian Community, Michigan (See Home Page – Great Lakes) Lac Vieux Desert Band of Lake Superior Chippewa Indians of Michigan (See Home Page – Great Lakes) Saginaw Chippewa Indian Tribe of Michigan (See Home Page – Great Lakes) Sault Ste. Marie Tribe of Chippewa Indians, Michigan (See Home Page – Great Lakes)</p> <p>Minnesota: Minnesota Chippewa Tribe, Minnesota Red Lake Band of Chippewa Indians, Minnesota</p> <p>Montana: Chippewa Cree Indians of the Rocky Boy's Reservation, Montana (See Home Page – Northern Plateau)</p> <p>North Dakota: Turtle Mountain Band of Chippewa Indians of North Dakota</p> <p>Wisconsin: Bad River Band of the Lake Superior Tribe of Chippewa Indians of the Bad River Reservation, Wisconsin (See Home Page – Great Lakes) Lac Courte Oreilles Band of Lake Superior Chippewa Indians of Wisconsin (See Home Page – Great Lakes)</p>

		<p>Lac du Flambeau Band of Lake Superior Chippewa Indians of the Lac du Flambeau Reservation of Wisconsin (See Home Page – Great Lakes) Red Cliff Band of Lake Superior Chippewa Indians of Wisconsin (See Home Page – Great Lakes) Sokaogon Chippewa Community, Wisconsin (See Home Page – Great Lakes) St. Croix Chippewa Indians of Wisconsin (See Home Page – Great Lakes)</p>
--	--	--

Sample Document



Red Lake Indian Mills, Minnesota, 1939. Lumber was a primary source of income for many Native Communities in the northern United States, particularly between about 1909 and 1960. National Archives. <https://catalog.archives.gov/id/76048095>

Lower Sioux Indian Community in the State of Minnesota

Mdewakanton Dakota and Wahpekute Dakota

To hear modern Native Community names spoken aloud, see [National Indian Law Library](#).

Always consult the Native People themselves for most accurate information, either through their website or in person.

Current Community Headquarters: **Morton, Minnesota**

Citizen Archivist Catalog Tag: **NT399**

To find documents already tagged, copy and paste this tag into the [Advanced Online Catalog Search Form](#) in the "Tags" box. If documents are not tagged or you wish to contribute, see the [Citizen Archivist Program](#).

Personal archival assistance:

For additional help in finding records of the Lower Sioux of Minnesota Community, email the archivists at the National Archives at Kansas City (kansascity.archives@nara.gov) or contact the [National Archives in Washington D.C.](#) Organizations listed on the [Minnesota Native Communities](#) page may also provide research assistance.

Searching in the [National Archives Online Catalog](#)

Slashes (/) separate individual search strings. Copy and paste or type exactly, including quotation marks if present. Also, try using a word from each of the community's other names and locations. See associated video for more detailed instructions.

Suggested Search Terms: "**Lower Sioux**" / **Mdewakanton** **NOT "Civil Rights"**

Related Searches: "**Redwood County**" **Minnesota**

This community may also have been recorded as: **Sioux / Lower Sioux / Mdewakanton Band / Bishop Whipple Mission / Cansa'yapi / "where they paint the trees red" / Lower Sioux Indian Community / Lower Sioux Reservation / Mdewakanton Tribal Reservation**

Additional Resources: The following sources may provide important background information and ideas for additional search terms.

Lower Sioux of Minnesota website: <http://lowersioux.com/>

Wikipedia (general information only): https://en.wikipedia.org/wiki/Lower_Sioux_Indian_Reservation and <https://en.wikipedia.org/wiki/Mdewakanton> and https://en.wikipedia.org/wiki/Dakota_people and <https://en.wikipedia.org/wiki/Sioux>

Also see: Minnesota Indian Affairs Council at <https://mn.gov/indianaffairs/tribes.html> and the Minnesota Historical Society articles about 1) the U.S. - Dakota War at <http://www.usdakotawar.org/> and 2) the Lower Sioux Community at <http://sites.mnhs.org/historic-sites/lower-sioux-agency>

Links to additional Information (search each by tribe name):

Federal Register (recent rulings and issues): <https://www.federalregister.gov/>

Native Languages: <http://www.native-languages.org>

National Indian Law Library: <http://www.narf.org/nill/tribes/>

American Philosophical Society Indigenous Subject Guide: <https://search.amphilsoc.org/natam/search>

Library of Congress: <https://www.loc.gov/>

Bureau of Indian Affairs (BIA) Records (Record Group 75):

To focus on BIA records in the Online Catalog, use "advanced search" and enter 75 into the Record Group field.

Although important, the BIA is only one of many Federal agencies containing important records of Native Communities. For various reasons there are often periods of time where BIA records are not available for individual tribes. Other techniques should be used for these periods, such as searching by geographic area and/or time-period and widening the search to include ALL Federal agencies.

Community records could also be "buried" in BIA agency files not described in the Online Catalog in great enough detail to be searched directly by community name. Doing an advanced search using one or two words from the BIA office name or the entire office name in quotes, along with Record Group 75, may be beneficial. Some BIA offices known to hold **Lower Sioux of Minnesota** records follow:

1893-1947 Pipestone Indian School, 1947-1954 Consolidated Chippewa Agency, 1949- Minneapolis Area Office, 1954- Minnesota Agency

Minnesota Chippewa Tribe, Minnesota

St. Croix Band, Fond du Lac Band, Grand Portage Band, and Bois Forte Band of Lake Superior Ojibwe (Chippewa)

To hear modern Native Community names spoken aloud, see [National Indian Law Library](#).

Always consult the Native People themselves for most accurate information, either through their website or in person.

Current Community Headquarters: [White Earth, Minnesota](#)

Citizen Archivist Catalog Tag: [NT629](#)

To find documents already tagged, copy and paste this tag into the [Advanced Online Catalog Search Form](#) in the "Tags" box. If documents are not tagged or you wish to contribute, see the [Citizen Archivist Program](#).

Personal archival assistance:

For additional help in finding records of the Minnesota Chippewa Community, email the archivists at the National Archives at Kansas City (kansascity.archives@nara.gov), the National Archives at Chicago (chicago.archives@nara.gov), or contact the [National Archives in Washington D.C.](#) Organizations listed on the [Minnesota Native Communities](#) page may also provide research assistance.

Searching in the [National Archives Online Catalog](#)

Slashes (/) separate individual search strings. Copy and paste or type exactly, including quotation marks if present. Also, try using a word from each of the community's other names and locations. See associated video for more detailed instructions.

Suggested Search Terms: "[Minnesota Chippewa](#)" ([advanced search using Record Group 75](#)) / "[Bois Forte Indian](#)" / "[Nett Lake Indian](#)" / "[Fond du Lac Indian](#)" / "[Grand Portage Indian](#)" / "[Leech Lake Indian](#)" / "[Mille Lacs Indian](#)" / "[White Earth Indian](#)" / "[Bois Forte Reservation](#)" / "[Nett Lake Reservation](#)" / "[Fond du Lac Reservation](#)" / "[Grand Portage Reservation](#)" / "[Leech Lake Reservation](#)" / "[Mille lacs Reservation](#)" / "[White Earth Reservation](#)"

Related Searches: "[Aitkin County](#)" [Minnesota](#) / "[Becker County](#)" [Minnesota](#) / "[Beltrami County](#)" [Minnesota](#) / "[Carlton County](#)" [Minnesota](#) / "[Cass County](#)" [Minnesota](#) / "[Clearwater County](#)" [Minnesota](#) / "[Cook County](#)" [Minnesota](#) / "[Crow Wing County](#)" [Minnesota](#) / "[Hubbard County](#)" [Minnesota](#) / "[Itasca County](#)" [Minnesota](#) / "[Koochiching County](#)" [Minnesota](#) / "[Mahnomon County](#)" [Minnesota](#) / "[Mille Lacs County](#)" [Minnesota](#) / "[Pine County](#)" [Minnesota](#) / "[St. Louis County](#)" [Minnesota](#)

This community may also have been recorded as: [Bois Forte Band \(Nett Lake\)](#) / "[strong wood](#)" / [Fond du Lac Band](#) / [Grand Portage Band](#) / [Leech Lake Band](#) / [Mille Lacs Band](#) / [White Earth Band](#) / [Minnesota Ojibwe](#) / [Minnesota Chippewa](#) / (see [individual reservation websites for other possible search terms](#))

Additional Resources: The following sources may provide important background information and ideas for additional search terms.

Minnesota Chippewa website: <https://www.mnchippewatribe.org/> and <http://www.boisforte.com/> and <http://www.fdlrez.com/> and <http://www.llojibwe.org/> and <https://www.millelacsband.com/> and <http://www.whiteearth.com/history.html> (no website found for Grand Portage reservation)

Wikipedia (general information only): https://en.wikipedia.org/wiki/Minnesota_Chippewa_Tribe and <https://en.wikipedia.org/wiki/Ojibwe> and https://en.wikipedia.org/wiki/Lake_Superior_Chippewa

Also see: Zaagibagaang (members of the Minnesota Chippewa Tribe) at <https://zaagibagaang.com/> and Minnesota Indian Affairs Council at <https://mn.gov/indianaaffairs/tribes.html>

Links to additional information (search each by tribe name):

Federal Register (recent rulings and issues): <https://www.federalregister.gov/>

Native Languages: <http://www.native-languages.org>

National Indian Law Library: <http://www.narf.org/nill/tribes/>

American Philosophical Society Indigenous Subject Guide: <https://search.amphilsoc.org/natam/search>

Library of Congress: <https://www.loc.gov/>

Bureau of Indian Affairs (BIA) Records (Record Group 75): (continued on next page)

Minnesota Chippewa Tribe

Bureau of Indian Affairs (BIA) Records (Record Group 75):

To focus on BIA records in the Online Catalog, use "advanced search" and enter 75 into the Record Group field.

Although important, the BIA is only one of many Federal agencies containing important records of Native Communities. For various reasons there are often periods of time where BIA records are not available for individual tribes. Other techniques should be used for these periods, such as searching by geographic area and/or time-period and widening the search to include ALL Federal agencies.

Community records could also be "buried" in BIA agency files not described in the Online Catalog in great enough detail to be searched directly by community name. Doing an advanced search using one or two words from the BIA office name or the entire office name in quotes, along with Record Group 75, may be beneficial. Some BIA offices known to hold **Minnesota Chippewa** records follow:

1871-1942 White Earth Agency, 1875-1918 White Earth Agency, 1899-1942 Leech Lake Agency, 1906-1927 Nett Lake Agency, 1907-1922 Fond du Lac Agency, 1907-1922 Grand Portage Agency, 1908-1917 Nett Lake Agency, 1913-1935 Consolidated Chippewa Agency, 1913-1969 Minnesota Agency, 1922-1963 Consolidated Chippewa Agency, ca. 1934 - ca. 1944 Minneapolis Area Office

Sample Document

(TO BE GIVEN TO APPLICANTS FOR LICENSE TO MARRY.)

No. 11 **MARRIAGE LICENSE.** White Earth Agency.
Dec. 21st State or Territory.

License is hereby issued for the marriage of the following persons:

	MAN.	WOMAN.
INDIAN NAME	<u>Eshquay gah bow</u>	<u>Ko mandy</u>
ENGLISH NAME	<u>Marshall Perry Chau bush King</u>	
NAME OF ALLOTMENT BELL		
AGE	<u>34</u>	<u>19</u>
RELATIONSHIP TO EACH OTHER	<u>bro</u>	<u>bro</u>
BLOOD OR NATIONALITY	<u>Chippewa of Minnesota</u>	<u>Chippewa of White</u>
TERRITORY OR CITIZENSHIP	<u>Chippewa of Minnesota</u>	<u>Chippewa of Minnesota</u>
NAME OF FATHER	<u>John Bush King</u>	<u>Billie Perry</u>
NAME OF MOTHER	<u>John Bush King</u>	<u>Perry & Quay</u>
PREVIOUS MARRIAGE	<u>No.</u>	<u>No.</u>

THEY WISH TO BE MARRIED

1. By a clergyman* in accordance with the laws of this State* or Territory*;
2. By declaring (in the presence of adult witnesses, who shall sign the certificate) their intention to live together permanently as husband and wife.*

WITNESS MY HAND, this 21st day of Dec., 1901

Name, _____
Official designation, Wm. Nellis, Agent

(a) The crossed words should be crossed out.
(b) This second form of marriage to be used only when it is impracticable or very difficult to obtain the services of a clergyman or civil magistrate.

No. of License 11 **RETURN OF MARRIAGE.**

11 hereby certify, That Eshquay gah bow and Ko mandy, known by me* to be the persons described in the above license, were married by me* in our presence* on the 27 day of December, A. D. 1901, at White Earth, in the State* of Minnesota, in compliance with the laws of said State or Territory.*

by declaring in our presence their intention to live together permanently as husband and wife.*

WITNESSES:
Felix Nellis (his)
Nellis (his)

Name, Felix Nellis A.S.B.
Official designation, Missionary
Address, White Earth, Minn.

(a) The crossed words should be crossed out.
(b) If marriage is by a clergyman or by a magistrate the officiating person must sign this certificate, giving the title authorizing him so to do, and his address. If marriage is by declaration, two adult witnesses must sign this certificate.
The above license, with the return of marriage, must be immediately returned to the Agent who issued it by the person who solemnized the marriage or by one of the witnesses.

Marriage license, White Earth Agency, December 21st 1901 between Eshquay gah bow and Ko mandy,, both Chippewa. Marriage performed by Felix Nellis, A.S.B., Missionary. Usually marriage documents are held in county or state archives because they are not federal records, however you will sometimes find Native American birth, death and marriage information in Bureau of Indian Affairs agency records due to the unique relationship between American Indian Nations and the United States. National Archives. <https://catalog.archives.gov/id/16358361>

Prairie Island Indian Community in the State of Minnesota

Dakota Sioux (Mdewakanton)

To hear modern Native Community names spoken aloud, see [National Indian Law Library](#).

Always consult the Native People themselves for most accurate information, either through their website or in person.

Current Community Headquarters: [Welch, Minnesota](#)

Citizen Archivist Catalog Tag: **NT396**

To find documents already tagged, copy and paste this tag into the [Advanced Online Catalog Search Form](#) in the "Tags" box. If documents are not tagged or you wish to contribute, see the [Citizen Archivist Program](#).

Personal archival assistance:

For additional help in finding records of the Prairie Island Community, email the archivists at the National Archives at Kansas City (kansascity.archives@nara.gov) or contact the [National Archives in Washington D.C.](#) Organizations listed on the [Minnesota Native Communities](#) page may also provide research assistance.

Searching in the [National Archives Online Catalog](#)

Slashes (/) separate individual search strings. Copy and paste or type exactly, including quotation marks if present. Also, try using a word from each of the community's other names and locations. See associated video for more detailed instructions.

Suggested Search Terms: **"Prairie Island" Indian / "Prairie Island" Sioux / "Prairie Island" Mdewakanton / "Prairie Island" Dakota**

Related Searches: **"Goodhue County" Minnesota**

This community may also have been recorded as: **Prairie Island Indian Community / Eggleston / Mdewakanton / "those who were born of the waters" / Tinta Winta / Prairie Island Community**

Additional Resources: The following sources may provide important background information and ideas for additional search terms.

Prairie Island Community website: <http://prairieisland.org/>

Wikipedia (general information only): https://en.wikipedia.org/wiki/Prairie_Island_Indian_Community and <https://en.wikipedia.org/wiki/Mdewakanton> and https://en.wikipedia.org/wiki/Dakota_people and <https://en.wikipedia.org/wiki/Sioux>

Also see: Minnesota Indian Affairs Council at <https://mn.gov/indianaffairs/tribes.html> and the Minnesota Historical Society about the U.S. - Dakota War at <http://www.usdakotawar.org/>

Links to additional information (search each by tribe name):

Federal Register (recent rulings and issues): <https://www.federalregister.gov/>

Native Languages: <http://www.native-languages.org>

National Indian Law Library: <http://www.narf.org/nill/tribes/>

American Philosophical Society Indigenous Subject Guide: <https://search.amphilsoc.org/natam/search>

Library of Congress: <https://www.loc.gov/>

Bureau of Indian Affairs (BIA) Records (Record Group 75):

To focus on BIA records in the Online Catalog, use "advanced search" and enter 75 into the Record Group field.

Although important, the BIA is only one of many Federal agencies containing important records of Native Communities. For various reasons there are often periods of time where BIA records are not available for individual tribes. Other techniques should be used for these periods, such as searching by geographic area and/or time-period and widening the search to include ALL Federal agencies.

Community records could also be "buried" in BIA agency files not described in the Online Catalog in great enough detail to be searched directly by community name. Doing an advanced search using one or two words from the BIA office name or the entire office name in quotes, along with Record Group 75, may be beneficial. Some BIA offices known to hold **Prairie Island Community** records follow:

1849-1940 Land Division, 1893-1947 Pipestone Indian School, 1943-1947 Division of Tribal Relations, 1954- Minnesota Agency, 1949- Minneapolis Area Office

Red Lake Band of Chippewa Indians, Minnesota

Ojibwe (Chippewa)

To hear modern Native Community names spoken aloud, see [National Indian Law Library](#).

Always consult the Native People themselves for most accurate information, either through their website or in person.

Current Community Headquarters: [Red Lake, Minnesota](#)

Citizen Archivist Catalog Tag: **NT395**

To find documents already tagged, copy and paste this tag into the [Advanced Online Catalog Search Form](#) in the "Tags" box. If documents are not tagged or you wish to contribute, see the [Citizen Archivist Program](#).

Personal archival assistance:

For additional help in finding records of the Red Lake Chippewa Community, email the archivists at the National Archives at Kansas City (kansascity.archives@nara.gov), the National Archives at Chicago (chicago.archives@nara.gov), or contact the [National Archives in Washington D.C.](#) Organizations listed on the [Minnesota Native Communities](#) page may also provide research assistance.

Searching in the [National Archives Online Catalog](#)

Slashes (/) separate individual search strings. Copy and paste or type exactly, including quotation marks if present. Also, try using a word from each of the community's other names and locations. See associated video for more detailed instructions.

Suggested Search Terms: "Red Lake" Chippewa NOT "Data Files" / "Red Lake" Ojibwe / "St Mary's Mission" AND "Red Lake"

Related Searches: "Beltrami County" Minnesota / "Clearwater County" Minnesota

This community may also have been recorded as: Red Lake / Red Lake Band of Ojibwe / Red Lake Band of Chippewa / St Mary's Mission / Red Lake Band Reservation / Red Lake Reservation

Additional Resources: The following sources may provide important background information and ideas for additional search terms.

Red Lake Chippewa website: <http://www.redlakenation.org/> and <http://www.redlakenation.org/tribal-government/tribal-history-historical-photos>
Wikipedia (general information only): https://en.wikipedia.org/wiki/Red_Lake_Indian_Reservation and <https://en.wikipedia.org/wiki/Ojibwe>
Also see: Red Lake Nation News at <http://www.redlakenationnews.com/> and Minnesota Indian Affairs Council at <https://mn.gov/indianaffairs/tribes.html>

Links to additional information (search each by tribe name):

Federal Register (recent rulings and issues): <https://www.federalregister.gov/>
Native Languages: <http://www.native-languages.org>
National Indian Law Library: <http://www.narf.org/nill/tribes/>
American Philosophical Society Indigenous Subject Guide: <https://search.amphilsoc.org/natam/search>
Library of Congress: <https://www.loc.gov/>

Bureau of Indian Affairs (BIA) Records (Record Group 75):

To focus on BIA records in the Online Catalog, use "advanced search" and enter 75 into the Record Group field.

Although important, the BIA is only one of many Federal agencies containing important records of Native Communities. For various reasons there are often periods of time where BIA records are not available for individual tribes. Other techniques should be used for these periods, such as searching by geographic area and/or time-period and widening the search to include ALL Federal agencies.

Community records could also be "buried" in BIA agency files not described in the Online Catalog in great enough detail to be searched directly by community name. Doing an advanced search using one or two words from the BIA office name or the entire office name in quotes, along with Record Group 75, may be beneficial. Some BIA offices known to hold **Red Lake Chippewa** records follow:

1887-1967 Red Lake Agency, 1913-1935 Consolidated Chippewa Agency, 1913-1969 Minnesota Agency, 1922-1963 Consolidated Chippewa Agency, ca. 1934 - ca. 1944 Minneapolis Area Office

Shakopee Mdewakanton Sioux Community of Minnesota

Mdewakanton Dakota

To hear modern Native Community names spoken aloud, see [National Indian Law Library](#).

Always consult the Native People themselves for most accurate information, either through their website or in person.

Current Community Headquarters: **Prior Lake, Minnesota**

Citizen Archivist Catalog Tag: **NT400**

To find documents already tagged, copy and paste this tag into the [Advanced Online Catalog Search Form](#) in the "Tags" box. If documents are not tagged or you wish to contribute, see the [Citizen Archivist Program](#).

Personal archival assistance:

For additional help in finding records of the Shakopee Mdewakanton Sioux Community, email the archivists at the National Archives at Kansas City (kansascity.archives@nara.gov) or contact the [National Archives in Washington D.C.](#) Organizations listed on the [Minnesota Native Communities](#) page may also provide research assistance.

Searching in the [National Archives Online Catalog](#)

Slashes (/) separate individual search strings. Copy and paste or type exactly, including quotation marks if present. Also, try using a word from each of the community's other names and locations. See associated video for more detailed instructions.

Suggested Search Terms: **Shakopee Mdewakanton / "Mdewakanton Dakota"**

Related Searches: **"Scott County" Minnesota**

This community may also have been recorded as:
Shakopee Mdewakanton Sioux / SMSC / Shakopee / Shakopee Mdewakanton / Mdewakanton Dakota Sioux / Bdemayaŋo Oyate / "dwellers at the spirit waters" / Shakopee Reservation (Prior Lake)

Additional Resources: The following sources may provide important background information and ideas for additional search terms.

Shakopee Mdewakanton Sioux website: <https://shakopeedakota.org/> and <https://twitter.com/ShakopeeDakota>

Wikipedia (general information only): https://en.wikipedia.org/wiki/Shakopee_Mdewakanton_Sioux_Community and <https://en.wikipedia.org/wiki/Mdewakanton> and https://en.wikipedia.org/wiki/Dakota_people and <https://en.wikipedia.org/wiki/Sioux>

Also see: Minnesota Indian Affairs Council at <https://mn.gov/indianaffairs/tribes.html> and the Minnesota Historical Society about the U.S. - Dakota War at <http://www.usdakotawar.org/>

Links to additional information (search each by tribe name):

Federal Register (recent rulings and issues): <https://www.federalregister.gov/>

Native Languages: <http://www.native-languages.org>

National Indian Law Library: <http://www.narf.org/nill/tribes/>

American Philosophical Society Indigenous Subject Guide: <https://search.amphilsoc.org/natam/search>

Library of Congress: <https://www.loc.gov/>

Bureau of Indian Affairs (BIA) Records (Record Group 75):

To focus on BIA records in the Online Catalog, use "advanced search" and enter 75 into the Record Group field.

Although important, the BIA is only one of many Federal agencies containing important records of Native Communities. For various reasons there are often periods of time where BIA records are not available for individual tribes. Other techniques should be used for these periods, such as searching by geographic area and/or time-period and widening the search to include ALL Federal agencies.

Community records could also be "buried" in BIA agency files not described in the Online Catalog in great enough detail to be searched directly by community name. Doing an advanced search using one or two words from the BIA office name or the entire office name in quotes, along with Record Group 75, may be beneficial. Some BIA offices known to hold **Shakopee Mdewakanton Sioux** records follow:

1849-1908 Finance Division, 1949- Minneapolis Area Office

Upper Sioux Community, Minnesota

Mdewakanton Dakota

To hear modern Native Community names spoken aloud, see [National Indian Law Library](#).

Always consult the Native People themselves for most accurate information, either through their website or in person.

Current Community Headquarters: **Granite Falls, Minnesota**

Citizen Archivist Catalog Tag: NT401

To find documents already tagged, copy and paste this tag into the [Advanced Online Catalog Search Form](#) in the "Tags" box. If documents are not tagged or you wish to contribute, see the [Citizen Archivist Program](#).

Personal archival assistance:

For additional help in finding records of the Upper Sioux Community, email the archivists at the National Archives at Kansas City (kansascity.archives@nara.gov) or contact the [National Archives in Washington D.C.](#) Organizations listed on the [Minnesota Native Communities](#) page may also provide research assistance.

Searching in the [National Archives Online Catalog](#)

Slashes (/) separate individual search strings. Copy and paste or type exactly, including quotation marks if present. Also, try using a word from each of the community's other names and locations. See associated video for more detailed instructions.

Suggested Search Terms: "Upper Sioux"

Related Searches: "Yellow Medicine County" Minnesota

This community may also have been recorded as: [Upper Sioux / Pezihutazizi Oyate / Upper Sioux Community / Upper Sioux Reservation](#)

Additional Resources: The following sources may provide important background information and ideas for additional search terms.

Upper Sioux Community website: <http://www.uppersiouxcommunity-nsn.gov/>

Wikipedia (general information only): https://en.wikipedia.org/wiki/Upper_Sioux_Indian_Reservation and <https://en.wikipedia.org/wiki/Mdewakanton> and https://en.wikipedia.org/wiki/Dakota_people and <https://en.wikipedia.org/wiki/Sioux>

Also see: Minnesota Indian Affairs Council at <https://mn.gov/indianaffairs/tribes.html> and Southwest Minnesota State University Upper Sioux Community page at <http://www.smsu.edu/academics/departments/education/upper-sioux-community-pejuhutazizi-oyate.html>

Links to additional information (search each by tribe name):

Federal Register (recent rulings and issues): <https://www.federalregister.gov/>

Native Languages: <http://www.native-languages.org>

National Indian Law Library: <http://www.narf.org/nill/tribes/>

American Philosophical Society Indigenous Subject Guide: <https://search.amphilsoc.org/natam/search>

Library of Congress: <https://www.loc.gov/>

Bureau of Indian Affairs (BIA) Records (Record Group 75):

To focus on BIA records in the Online Catalog, use "advanced search" and enter 75 into the Record Group field.

Although important, the BIA is only one of many Federal agencies containing important records of Native Communities. For various reasons there are often periods of time where BIA records are not available for individual tribes. Other techniques should be used for these periods, such as searching by geographic area and/or time-period and widening the search to include ALL Federal agencies.

Community records could also be "buried" in BIA agency files not described in the Online Catalog in great enough detail to be searched directly by community name. Doing an advanced search using one or two words from the BIA office name or the entire office name in quotes, along with Record Group 75, may be beneficial. Some BIA offices known to hold **Upper Sioux Community** records follow:

1849-1940 Land Division, 1893-1947 Pipestone Indian School, 1947- (Main office) Bureau of Indian Affairs, 1949- Minneapolis Area Office

Nebraska Native Communities

To perform a search of more general records of Nebraska's Native People in the [National Archives Online Catalog](#), use **Advanced Search**. Enter **Nebraska NOT Alaska** in the search box and **75** in the Record Group box (Bureau of Indian Affairs). Additional records can be found using a general search with the search phrase "**Nebraska Indian**" **NOT "Data File"**. Also, searching using the terms or phrases specific to individual tribes listed in both the [Historic and Modern](#) sections below should provide useful results.

There are several great resources available for general information and material for kids about the Native People of Nebraska, such as the [Native Languages](#) and [National Museum of the American Indian](#) websites. Type **Nebraska** into the main search box for both.

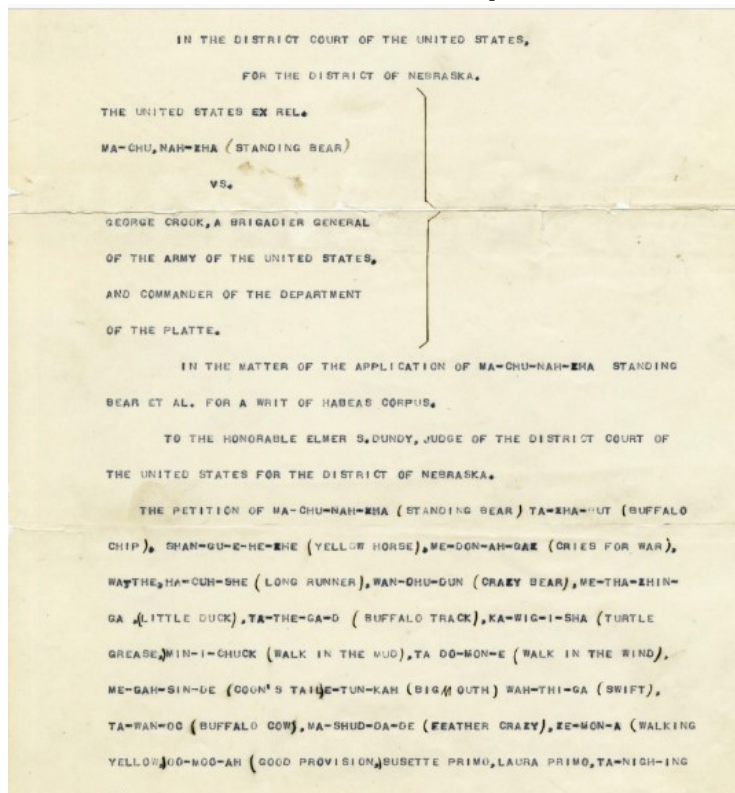
Related state agencies and universities may also hold records or information about these communities. Examples might include the [Nebraska State Historical Society](#), and the [Nebraska State "Native Daughters" Curriculum Companion](#).

Historic Nebraska Native Communities

Federally Recognized Native Communities in Nebraska (2018)

- [Iowa Tribe of Kansas and Nebraska](#)
- [Omaha Tribe of Nebraska](#)
- [Ponca Tribe of Nebraska](#)
- [Winnebago Tribe of Nebraska](#)
- [Sac and Fox Nation of Missouri in Kansas and Nebraska](#)
- [Santee Sioux Nation, Nebraska](#)

Document Sample



The landmark case, "Standing Bear, et al v George Crook, a Brigadier General of the United States" in which Indians (in this case Ponca tribal members) were declared by Judge Elmer S. Dundy to be "persons" and therefore for the first time were able to petition for a writ of habeas corpus, in this case for unlawful arrest. May 12, 1879. National Archives. <https://catalog.archives.gov/id/7403552>

Historic Nebraska Native Communities

For a map of historic language areas in Nebraska, see [Native Languages](#).

Instructions: Slashes separate search terms and phrases. **Copy and paste exact phrase** into the [Online Catalog](#), including quotation marks, if present. Always be willing to experiment with search terms. Quoted phrases return very different results than non-quoted phrases. Using the geographic location or most relevant word(s) from the tribal name with one of the following words may also prove beneficial: **Indian** (most useful), **Native**, **Tribe**, **Reservation**, or **Village**. Be sure to link to modern tribal pages. They contain current information and more possible search terms.

Historic Tribes	Suggested Online Catalog search term(s)	Associated Federally Recognized Tribal Communities 2018
Arapaho	"Arapahoe Indian" / "Arapaho Indian"	Oklahoma: Cheyenne and Arapaho Tribes, Oklahoma (See Home Page – Central Plains) Wyoming: Arapaho Tribe of the Wind River Reservation, Wyoming (See Home Page – Northern Plateau)
Cheyenne	"Cheyenne Indian" NOT River / "Northern Cheyenne" / Cheyenne Arapaho Indian	Oklahoma: Cheyenne and Arapaho Tribes, Oklahoma (See Home Page – Central Plains) Montana: Northern Cheyenne Tribe of the Northern Cheyenne Indian Reservation, Montana (See Home Page – Northern Plateau)
Dakota Sioux	"Sioux Indian" / Wahpeton / Wahpekute / "Santee Sioux" / Sisseton / Mdewakanton / "Lower Sioux" / "Upper Sioux"	Minnesota: Lower Sioux Indian Community in the State of Minnesota Prairie Island Indian Community in the State of Minnesota Shakopee Mdewakanton Sioux Community of Minnesota Upper Sioux Community, Minnesota Montana: Assiniboine and Sioux Tribes of the Fort Peck Indian Reservation, Montana (See Home Page – Northern Plateau) Nebraska: Santee Sioux Nation, Nebraska North Dakota: Spirit Lake Tribe, North Dakota North and South Dakota: Standing Rock Sioux Tribe of North & South Dakota South Dakota: Crow Creek Sioux Tribe of the Crow Creek Reservation, South Dakota Flandreau Santee Sioux Tribe of South Dakota Sisseton-Wahpeton Oyate of the Lake Traverse Reservation, South Dakota
Kansa	"Kansa-Kaw" / "Kaw Indian" / "Kanza Tribe"	Oklahoma: Kaw Nation, Oklahoma (See Home Page – Central Plains)
Lakota Sioux	"Sioux Indian" / Lakota Indian / Miniconjou / Hunkpapa / Unkpapa / Sicangu / "Brule Sioux" / "Oglala Sioux" / Itazipco / "Sans Arc Sioux" / Sicasapa / "Blackfoot Sioux" / O'Henumpa / "Two Kettle" Sioux	North and South Dakota: Standing Rock Sioux Tribe of North & South Dakota South Dakota: Cheyenne River Sioux Tribe of the Cheyenne River Reservation, South Dakota Lower Brule Sioux Tribe of the Lower Brule Reservation, South Dakota

		Oglala Sioux Tribe Rosebud Sioux Tribe of the Rosebud Indian Reservation, South Dakota
Missouria	Missouria / Missouria Indian / "Otoe- Missouria"	Oklahoma: Otoe-Missouria Tribe of Indians, Oklahoma (See Home Page – Central Plains)
Omaha	"Omaha Indian" / "Omaha Tribe"	Nebraska: Omaha Tribe of Nebraska
Otoe	Otoe Indian NOT County / "Otoe Indian" / "Otoe-Missouria"	Oklahoma: Otoe-Missouria Tribe of Indians, Oklahoma (See Home Page – Central Plains)
Pawnee	"Pawnee Indian" / "Pawnee Nation" / "Pawnee Tribe"	Oklahoma: Pawnee Nation of Oklahoma (See Home Page – Central Plains)
Ponca	"Ponca Indian" / "Ponca Tribe"	Nebraska: Ponca Tribe of Nebraska Oklahoma: Ponca Tribe of Indians of Oklahoma (See Home Page – Central Plains)



Pawnee Lodges at Loup, Nebraska. Photographed by William H. Jackson, 1873. National Archives.
<https://www.archives.gov/research/native-americans/pictures/select-list-084.html> and <https://catalog.archives.gov/id/523836>

Iowa Tribe of Kansas and Nebraska

Iowa (Ioway)

To hear modern Native Community names spoken aloud, see [National Indian Law Library](#).

Always consult the Native People themselves for most accurate information, either through their website or in person.

Current Community Headquarters: **White Cloud, Kansas**

Citizen Archivist Catalog Tag: **NT421a**

To find documents already tagged, copy and paste this tag into the [Advanced Online Catalog Search Form](#) in the "Tags" box. If documents are not tagged or you wish to contribute, see the [Citizen Archivist Program](#).

Personal archival assistance:

For additional help in finding records of the Iowa Tribe of Kansas and Nebraska, email the archivists at the National Archives at Kansas City (kansascity.archives@nara.gov) or contact the [National Archives in Washington D.C.](#) Organizations listed on the [Nebraska Native Communities](#) page may also provide research assistance.

Searching in the [National Archives Online Catalog](#)

Slashes (/) separate individual search strings. Copy and paste or type exactly, including quotation marks if present. Also, try using a word from each of the community's other names and locations. See associated video for more detailed instructions.

Suggested Search Terms: **"Iowa Indian" Kansas / Ioway / "Iowa Tribe"**

Related Searches: **"Richardson County" Nebraska / "Brown County" Kansas**

This community may also have been recorded as: **Iowa Tribe / Baxoje / Ioway / Northern Iowa / Northern Ioway / Oneota / (Occasionally, this and other Kansas tribes are all referred to as "Potawatomi") / Iowa Reservation**

Additional Resources: The following sources may provide important background information and ideas for additional search terms.

Iowa Tribe of Kansas and Nebraska website: <https://www.iowatribeofkansasandnebraska.com/>

Wikipedia (general information only): https://en.wikipedia.org/wiki/Iowa_Tribe_of_Kansas_and_Nebraska and https://en.wikipedia.org/wiki/Iowa_people

Also see: Southern Plains Tribal Health Board at <http://www.spthb.org/programs/who-we-serve/iowa-tribe-of-kansas-and-nebraska/>

Links to additional information (search each by tribe name):

Federal Register (recent rulings and issues): <https://www.federalregister.gov/>

Native Languages: <http://www.native-languages.org>

National Indian Law Library: <http://www.narf.org/nill/tribes/>

American Philosophical Society Indigenous Subject Guide: <https://search.amphilsoc.org/natam/search>

Library of Congress: <https://www.loc.gov/>

Bureau of Indian Affairs (BIA) Records (Record Group 75):

To focus on BIA records in the Online Catalog, use "advanced search" and enter 75 into the Record Group field.

Although important, the BIA is only one of many Federal agencies containing important records of Native Communities. For various reasons there are often periods of time where BIA records are not available for individual tribes. Other techniques should be used for these periods, such as searching by geographic area and/or time-period and widening the search to include ALL Federal agencies.

Community records could also be "buried" in BIA agency files not described in the Online Catalog in great enough detail to be searched directly by community name. Doing an advanced search using one or two words from the BIA office name or the entire office name in quotes, along with Record Group 75, may be beneficial. Some BIA offices known to hold **Iowa Tribe of Kansas and Nebraska** records follow:

1859-1921 Kickapoo Agency, 1860-1945 Potawatomi Agency, 1883-1969 Potawatomi Area Field Office, 1905-1980 Horton Agency

Omaha Tribe of Nebraska

Omaha

To hear modern Native Community names spoken aloud, see [National Indian Law Library](#).

Always consult the Native People themselves for most accurate information, either through their website or in person.

Current Community Headquarters: **Macy, Nebraska**

Citizen Archivist Catalog Tag: **NT420**

To find documents already tagged, copy and paste this tag into the [Advanced Online Catalog Search Form](#) in the "Tags" box. If documents are not tagged or you wish to contribute, see the [Citizen Archivist Program](#).

Personal archival assistance:

For additional help in finding records of the Omaha Tribe of Nebraska, email the archivists at the National Archives at Kansas City (kansascity.archives@nara.gov) or contact the [National Archives in Washington D.C.](#) Organizations listed on the [Nebraska Native Communities](#) page may also provide research assistance.

Searching in the [National Archives Online Catalog](#)

Slashes (/) separate individual search strings. Copy and paste or type exactly, including quotation marks if present. Also, try using a word from each of the community's other names and locations. See associated video for more detailed instructions.

Suggested Search Terms: "Omaha Tribe" Nebraska / Omaha "Lewis and Clark" NOT "Data Files"

Related Searches: "Cuming County" Nebraska / "Wayne County" Nebraska

This community may also have been recorded as: Omaha / U-Mo'n-Ho'n / "those going against the wind or current" / Maha (1718) / Ton-wa-tonga (Lewis and Clark) / Bellevue Agency / Omaha Reservation

Additional Resources: The following sources may provide important background information and ideas for additional search terms.

Omaha Tribe of Nebraska website: None found

Wikipedia (general information only): https://en.wikipedia.org/wiki/Omaha_people and https://en.wikipedia.org/wiki/Omaha_Reservation
Also see: An article at the Nebraska Indian Community College website at <http://www.thenicc.edu/index.php/en/omaha-tribe-of-ne-and-ia> and Nebraska Education on Location at <http://www.nebraskaeducationonlocation.org/native-tribes/omaha-tribe-nebraska/>

Links to additional information (search each by tribe name):

Federal Register (recent rulings and issues): <https://www.federalregister.gov/>

Native Languages: <http://www.native-languages.org>

National Indian Law Library: <http://www.narf.org/nill/tribes/>

American Philosophical Society Indigenous Subject Guide: <https://search.amphilsoc.org/natam/search>

Library of Congress: <https://www.loc.gov/>

Bureau of Indian Affairs (BIA) Records (Record Group 75):

To focus on BIA records in the Online Catalog, use "advanced search" and enter 75 into the Record Group field.

Although important, the BIA is only one of many Federal agencies containing important records of Native Communities. For various reasons there are often periods of time where BIA records are not available for individual tribes. Other techniques should be used for these periods, such as searching by geographic area and/or time-period and widening the search to include ALL Federal agencies.

Community records could also be "buried" in BIA agency files not described in the Online Catalog in great enough detail to be searched directly by community name. Doing an advanced search using one or two words from the BIA office name or the entire office name in quotes, along with Record Group 75, may be beneficial. Some BIA offices known to hold **Omaha Tribe of Nebraska** records follow:

1857-1989 Winnebago Agency, 1879-1903 Omaha and Winnebago Agency, 1909-1925 Omaha Agency

Ponca Tribe of Nebraska

Ponca

To hear modern Native Community names spoken aloud, see [National Indian Law Library](#).

Always consult the Native People themselves for most accurate information, either through their website or in person.

Current Community Headquarters: **Niobrara, Nebraska**

Citizen Archivist Catalog Tag: **NT418**

To find documents already tagged, copy and paste this tag into the [Advanced Online Catalog Search Form](#) in the "Tags" box. If documents are not tagged or you wish to contribute, see the [Citizen Archivist Program](#).

Personal archival assistance:

For additional help in finding records of the Ponca Tribe of Nebraska, email the archivists at the National Archives at Kansas City (kansascity.archives@nara.gov) or contact the [National Archives in Washington D.C.](#) Organizations listed on the [Nebraska Native Communities](#) page may also provide research assistance.

Searching in the [National Archives Online Catalog](#)

Slashes (/) separate individual search strings. Copy and paste or type exactly, including quotation marks if present. Also, try using a word from each of the community's other names and locations. See associated video for more detailed instructions.

Suggested Search Terms: "**Ponca Indian**" / "**Ponca Tribe**" / **Ponca Nebraska NOT "Data File" (returns mixed results)** / "**Standing Bear**" **Crook**

Related Searches: "**Knox County**" **Nebraska**

This community may also have been recorded as: **Ponca / Usni (Cold) / Unsi Ponca / Ponca Tribe / Pipestone / Northern Ponca Tribe / Ponca-Niobrara Reservation / Ponca Reservation**

Additional Resources: The following sources may provide important background information and ideas for additional search terms.

Ponca Tribe of Nebraska website: <https://www.poncatrIBE-ne.org/> and <https://www.poncatrIBE-ne.tv/>

Wikipedia (general information only): https://en.wikipedia.org/wiki/Ponca_Tribe_of_Nebraska and <https://en.wikipedia.org/wiki/Ponca>

Also see: Nebraska Education on Location at <http://www.nebraskaeducationonlocation.org/native-tribes/ponca-tribe-nebraska/>

Links to additional Information (search each by tribe name):

Federal Register (recent rulings and issues): <https://www.federalregister.gov/>

Native Languages: <http://www.native-languages.org>

National Indian Law Library: <http://www.narf.org/nill/tribes/>

American Philosophical Society Indigenous Subject Guide: <https://search.amphilsoc.org/natam/search>

Library of Congress: <https://www.loc.gov/>

Bureau of Indian Affairs (BIA) Records (Record Group 75):

To focus on BIA records in the Online Catalog, use "advanced search" and enter 75 into the Record Group field.

Although important, the BIA is only one of many Federal agencies containing important records of Native Communities. For various reasons there are often periods of time where BIA records are not available for individual tribes. Other techniques should be used for these periods, such as searching by geographic area and/or time-period and widening the search to include ALL Federal agencies.

Community records could also be "buried" in BIA agency files not described in the Online Catalog in great enough detail to be searched directly by community name. Doing an advanced search using one or two words from the BIA office name or the entire office name in quotes, along with Record Group 75, may be beneficial. Some BIA offices known to hold **Ponca Tribe of Nebraska** records follow:

1857-1989 Winnebago Agency, 1879-1903 Omaha and Winnebago Agency, 1909-1925 Omaha Agency

Sac and Fox Nation of Missouri in Kansas and Nebraska

Sauk (Sac) and Meskwaki (Fox)

To hear modern Native Community names spoken aloud, see [National Indian Law Library](#).

Always consult the Native People themselves for most accurate information, either through their website or in person.

Current Community Headquarters: [Reserve, Kansas](#)

Citizen Archivist Catalog Tag: [NT374a](#)

To find documents already tagged, copy and paste this tag into the [Advanced Online Catalog Search Form](#) in the "Tags" box. If documents are not tagged or you wish to contribute, see the [Citizen Archivist Program](#).

Personal archival assistance:

For additional help in finding records of the Sac and Fox of Missouri, email the archivists at the National Archives at Kansas City (kansascity.archives@nara.gov) or contact the [National Archives in Washington D.C.](#) Organizations listed on the [Nebraska Native Communities](#) page may also provide research assistance.

Searching in the [National Archives Online Catalog](#)

Slashes (/) separate individual search strings. Copy and paste or type exactly, including quotation marks if present. Also, try using a word from each of the community's other names and locations. See associated video for more detailed instructions.

Suggested Search Terms: "[Sac and Fox](#)" [Kansas NOT Attorney's](#) / "[Sac and Fox](#)" [Indian NOT Attorney's](#) / "[Great Nemaha](#)"

Related Searches: "[Brown County](#)" [Kansas](#) / "[Richardson County](#)" [Nebraska](#)

This community may also have been recorded as:
[Missouri Sac and Fox](#) / [Kansas Sac and Fox](#) / [Sauk and Fox](#) / [Nemahahaki](#) / [Ne ma ha ha ki](#) / "People of the Yellow Earth" ([Sauk](#)) / "Red Earth People" ([Fox](#)) / [Great Nemaha Reservation](#) / [Sac and Fox Nation Reservation](#)

Additional Resources: The following sources may provide important background information and ideas for additional search terms.

Sac and Fox of Missouri website: <http://www.sacandfoxks.com/sacfox.nsf>

Wikipedia (general information only): https://en.wikipedia.org/wiki/Sac_and_Fox_Nation_of_Missouri_in_Kansas_and_Nebraska and https://en.wikipedia.org/wiki/Sauk_people and <https://en.wikipedia.org/wiki/Meskwaki>

Also see: Southern Plains Tribal Health Board at <http://www.spthb.org/programs/who-we-serve/sac-and-fox-nation-of-missouri-in-kansas-and-nebraska/>

Links to additional Information (search each by tribe name):

Federal Register (recent rulings and issues): <https://www.federalregister.gov/>

Native Languages: <http://www.native-languages.org>

National Indian Law Library: <http://www.narf.org/nill/tribes/>

American Philosophical Society Indigenous Subject Guide: <https://search.amphilsoc.org/natam/search>

Library of Congress: <https://www.loc.gov/>

Bureau of Indian Affairs (BIA) Records (Record Group 75):

To focus on BIA records in the Online Catalog, use "advanced search" and enter 75 into the Record Group field.

Although important, the BIA is only one of many Federal agencies containing important records of Native Communities. For various reasons there are often periods of time where BIA records are not available for individual tribes. Other techniques should be used for these periods, such as searching by geographic area and/or time-period and widening the search to include ALL Federal agencies.

Community records could also be "buried" in BIA agency files not described in the Online Catalog in great enough detail to be searched directly by community name. Doing an advanced search using one or two words from the BIA office name or the entire office name in quotes, along with Record Group 75, may be beneficial. Some BIA offices known to hold **Sac and Fox of Missouri** records follow:

1859-1921 Kickapoo Agency, 1860-1945 Potawatomi Agency, 1883-1969 Potawatomi Area Field Office, 1905-1980 Horton Agency

Santee Sioux Nation, Nebraska

Wahpekute (Santee) Dakota

To hear modern Native Community names spoken aloud, see [National Indian Law Library](#).

Always consult the Native People themselves for most accurate information, either through their website or in person.

Current Community Headquarters: [Niobrara, Nebraska](#)

Citizen Archivist Catalog Tag: **NT417**

To find documents already tagged, copy and paste this tag into the [Advanced Online Catalog Search Form](#) in the "Tags" box. If documents are not tagged or you wish to contribute, see the [Citizen Archivist Program](#).

Personal archival assistance:

For additional help in finding records of the Santee Sioux Nation, email the archivists at the National Archives at Kansas City (kansascity.archives@nara.gov) or contact the [National Archives in Washington D.C.](#) Organizations listed on the [Nebraska Native Communities](#) page may also provide research assistance.

Searching in the [National Archives Online Catalog](#)

Slashes (/) separate individual search strings. Copy and paste or type exactly, including quotation marks if present. Also, try using a word from each of the community's other names and locations. See associated video for more detailed instructions.

Suggested Search Terms: "[Santee Sioux](#)" [Nebraska](#) NOT "[Civil Rights](#)" / "[Our Most Merciful Savior](#)" / "[Santee Normal Training](#)"

Related Searches: "[Knox County](#)" [Nebraska](#)

This community may also have been recorded as: [Santee Sioux](#) / [Eastern Dakota](#) / [Niobrara](#) / [Breckenridge](#) / [Our Most Merciful Savior Church](#) / [Santee Normal Training School](#) / [Santee Sioux Reservation](#) / [Niobrara Reservation](#) / [Dakota Reservation](#)

Additional Resources: The following sources may provide important background information and ideas for additional search terms.

Santee Sioux Nation website: <http://santeesiouxnation.net/index.html> and <http://santeesiouxnation.net/history-and-culture.html>

Wikipedia (general information only): https://en.wikipedia.org/wiki/Santee_Sioux_Reservation and

https://en.wikipedia.org/wiki/Niobrara_Reservation and https://en.wikipedia.org/wiki/Dakota_people and <https://en.wikipedia.org/wiki/Sioux>

Also see: An article at the Nebraska Indian Community College website at <http://www.thenicc.edu/index.php/en/santee-sioux-nation> and Nebraska Education on Location at <http://www.nebraskaeducationonlocation.org/native-tribes/santee-sioux/> and the Minnesota Historical Society about the U.S. - Dakota War at <http://www.usdakotawar.org/>

Links to additional information (search each by tribe name):

Federal Register (recent rulings and issues): <https://www.federalregister.gov/>

Native Languages: <http://www.native-languages.org>

National Indian Law Library: <http://www.narf.org/nill/tribes/>

American Philosophical Society Indigenous Subject Guide: <https://search.amphilsoc.org/natam/search>

Library of Congress: <https://www.loc.gov/>

Bureau of Indian Affairs (BIA) Records (Record Group 75):

To focus on BIA records in the Online Catalog, use "advanced search" and enter 75 into the Record Group field.

Although important, the BIA is only one of many Federal agencies containing important records of Native Communities. For various reasons there are often periods of time where BIA records are not available for individual tribes. Other techniques should be used for these periods, such as searching by geographic area and/or time-period and widening the search to include ALL Federal agencies.

Community records could also be "buried" in BIA agency files not described in the Online Catalog in great enough detail to be searched directly by community name. Doing an advanced search using one or two words from the BIA office name or the entire office name in quotes, along with Record Group 75, may be beneficial. Some BIA offices known to hold **Santee Sioux Nation** records follow:

1857-1989 Winnebago Agency, 1879-1903 Omaha and Winnebago Agency, 1909-1925 Omaha Agency

Winnebago Tribe of Nebraska

Ho-Chunk (Winnebago)

To hear modern Native Community names spoken aloud, see [National Indian Law Library](#).

Always consult the Native People themselves for most accurate information, either through their website or in person.

Current Community Headquarters: [Winnebago, Nebraska](#)

Citizen Archivist Catalog Tag: **NT419**

To find documents already tagged, copy and paste this tag into the [Advanced Online Catalog Search Form](#) in the "Tags" box. If documents are not tagged or you wish to contribute, see the [Citizen Archivist Program](#).

Personal archival assistance:

For additional help in finding records of the Winnebago Tribe of Nebraska, email the archivists at the National Archives at Kansas City (kansascity.archives@nara.gov), the National Archives at Chicago (chicago.archives@nara.gov), or contact the [National Archives in Washington D.C.](#) Organizations listed on the [Nebraska Native Communities](#) page may also provide research assistance.

Searching in the [National Archives Online Catalog](#)

Slashes (/) separate individual search strings. Copy and paste or type exactly, including quotation marks if present. Also, try using a word from each of the community's other names and locations. See associated video for more detailed instructions.

Suggested Search Terms: "[Winnebago Tribe](#)" [Nebraska](#) / "[Ho-Chunk, Inc](#)" / "[Lillian St Cyr](#)"

Related Searches: "[Thurston County](#)" [Nebraska](#)

This community may also have been recorded as:
[Winnebago](#) / [Winnebago Tribe](#) / [Ho-Chunk, Inc.](#) / ([Lillian St. Cyr, known as Red Wing \(1884–1974\) was a Winnebago actress of the silent film era](#)) / [Winnebago Nebraska Reservation](#)

Additional Resources: The following sources may provide important background information and ideas for additional search terms.

Winnebago Tribe of Nebraska website: <http://www.winnebagotribe.com/>

Wikipedia (general information only): https://en.wikipedia.org/wiki/Winnebago_Tribe_of_Nebraska and https://en.wikipedia.org/wiki/Winnebago_Reservation and <https://en.wikipedia.org/wiki/Ho-Chunk>

Also see: Education on Location at <http://www.nebraskaeducationonlocation.org/native-tribes/winnebago-tribe-nebraska/>

Links to additional information (search each by tribe name):

Federal Register (recent rulings and issues): <https://www.federalregister.gov/>

Native Languages: <http://www.native-languages.org>

National Indian Law Library: <http://www.narf.org/nill/tribes/>

American Philosophical Society Indigenous Subject Guide: <https://search.amphilsoc.org/natam/search>

Library of Congress: <https://www.loc.gov/>

Bureau of Indian Affairs (BIA) Records (Record Group 75):

To focus on BIA records in the Online Catalog, use "advanced search" and enter 75 into the Record Group field.

Although important, the BIA is only one of many Federal agencies containing important records of Native Communities. For various reasons there are often periods of time where BIA records are not available for individual tribes. Other techniques should be used for these periods, such as searching by geographic area and/or time-period and widening the search to include ALL Federal agencies.

Community records could also be "buried" in BIA agency files not described in the Online Catalog in great enough detail to be searched directly by community name. Doing an advanced search using one or two words from the BIA office name or the entire office name in quotes, along with Record Group 75, may be beneficial. Some BIA offices known to hold **Winnebago Tribe of Nebraska** records follow:

1857-1989 Winnebago Agency, 1879-1903 Omaha and Winnebago Agency, 1893-1947 Tomah Indian School and Agency, 1909-1925 Omaha Agency

North Dakota Native Communities

To perform a search of more general records of North Dakota's Native People in the [National Archives Online Catalog](#), use **Advanced Search**. Enter "**North Dakota**" in the search box and **75** in the Record Group box (Bureau of Indian Affairs). Additional records can be found using a general search with the search phrase "**North Dakota Indian**". Also, searching using the terms or phrases specific to individual tribes listed in both the [Historic](#) and [Modern](#) sections below should provide useful results.

There are several great resources available for general information and material for kids about the Native People of North Dakota, such as the [Native Languages](#) and [National Museum of the American Indian](#) websites. Type **North Dakota** into the main search box for both.

Related state agencies and universities may also hold records or information about these communities. Examples might include the [North Dakota State Archives](#), the [State Historical Society of North Dakota](#), and the [North Dakota Indian Education Department](#).

Historic North Dakota Native Communities

Federally Recognized Native Communities in North Dakota (2018)

[Sisseton-Wahpeton Oyate of the Lake Traverse Reservation, South Dakota \(& North Dakota\)](#)
[Spirit Lake Tribe, North Dakota](#)
[Standing Rock Sioux Tribe of North & South Dakota](#)
[Three Affiliated Tribes of the Fort Berthold Reservation](#)
[Turtle Mountain Band of Chippewa Indians of North Dakota](#)

Document Sample



Secretary Gale Norton with Tex Hall, Chairman of the Three Affiliated Tribes of North Dakota, unfurling a gift from the Manan Hidatsa, Arikara Nation during events marking the debut of the Lewis and Clark Bicentennial traveling exhibit, "Corps of Discovery II" at Monticello, Virginia. January 18, 2003. National Archives. <https://catalog.archives.gov/id/5611631>

Historic North Dakota Native Communities

For a map of historic language areas in North Dakota, see [Native Languages](#).

Instructions: Slashes separate search terms and phrases. **Copy and paste exact phrase** into the [Online Catalog](#), including quotation marks, if present. Always be willing to experiment with search terms. Quoted phrases return very different results than non-quoted phrases. Using the geographic location or most relevant word(s) from the tribal name with one of the following words may also prove beneficial: **Indian** (most useful), **Native**, **Tribe**, **Reservation**, or **Village**. Be sure to link to modern tribal pages. They contain current information and more possible search terms.

Historic Tribes	Suggested Online Catalog search term(s)	Associated Federally Recognized Tribal Communities 2018
Arikara	Arikara Indian / "Fort Berthold"	North Dakota: Three Affiliated Tribes of the Fort Berthold Reservation
Dakota Sioux	"Sioux Indian" / Wahpeton / Wahpekute / "Santee Sioux" / Sisseton / Mdewakanton / "Lower Sioux" / "Upper Sioux"	Minnesota: Lower Sioux Indian Community in the State of Minnesota Prairie Island Indian Community in the State of Minnesota Shakopee Mdewakanton Sioux Community of Minnesota Upper Sioux Community, Minnesota Montana: Assiniboine and Sioux Tribes of the Fort Peck Indian Reservation, Montana (See Home Page – Northern Plateau) Nebraska: Santee Sioux Nation, Nebraska North Dakota: Spirit Lake Tribe, North Dakota North and South Dakota: Standing Rock Sioux Tribe of North & South Dakota South Dakota: Crow Creek Sioux Tribe of the Crow Creek Reservation, South Dakota Flandreau Santee Sioux Tribe of South Dakota Sisseton-Wahpeton Oyate of the Lake Traverse Reservation, South Dakota
Hidatsa	Hidatsa / "Fort Berthold"	North Dakota: Three Affiliated Tribes of the Fort Berthold Reservation
Lakota Sioux	"Sioux Indian" / Lakota Indian / Miniconjou / Hunkpapa / Unkpapa / Sicangu / "Brule Sioux" / "Oglala Sioux" / Itazipco / "Sans Arc Sioux" / Sihasapa / "Blackfoot Sioux" / O'Henumpa / "Two Kettle" Sioux	North and South Dakota: Standing Rock Sioux Tribe of North & South Dakota South Dakota: Oglala Sioux Tribe Cheyenne River Sioux Tribe of the Cheyenne River Reservation, South Dakota Lower Brule Sioux Tribe of the Lower Brule Reservation, South Dakota Rosebud Sioux Tribe of the Rosebud Indian Reservation, South Dakota
Mandan	Mandan Indian / "Mandan Indian" / "Fort Berthold"	North Dakota: Three Affiliated Tribes of the Fort Berthold Reservation

<p>Ojibwe (Chippewa)</p>	<p>Ojibwe / Chippewa Indian</p>	<p>Michigan: Bay Mills Indian Community, Michigan (See Home Page – Great Lakes) Grand Traverse Band of Ottawa and Chippewa Indians, Michigan (See Home Page – Great Lakes) Keweenaw Bay Indian Community, Michigan (See Home Page – Great Lakes) Lac Vieux Desert Band of Lake Superior Chippewa Indians of Michigan (See Home Page – Great Lakes) Saginaw Chippewa Indian Tribe of Michigan (See Home Page – Great Lakes) Sault Ste. Marie Tribe of Chippewa Indians, Michigan (See Home Page – Great Lakes)</p> <p>Minnesota: Minnesota Chippewa Tribe, Minnesota Red Lake Band of Chippewa Indians, Minnesota</p> <p>Montana: Chippewa Cree Indians of the Rocky Boy's Reservation, Montana (See Home Page – Northern Plateau)</p> <p>North Dakota: Turtle Mountain Band of Chippewa Indians of North Dakota</p> <p>Wisconsin: Bad River Band of the Lake Superior Tribe of Chippewa Indians of the Bad River Reservation, Wisconsin (See Home Page – Great Lakes) Lac Courte Oreilles Band of Lake Superior Chippewa Indians of Wisconsin (See Home Page – Great Lakes) Lac du Flambeau Band of Lake Superior Chippewa Indians of the Lac du Flambeau Reservation of Wisconsin (See Home Page – Great Lakes) Red Cliff Band of Lake Superior Chippewa Indians of Wisconsin (See Home Page – Great Lakes) Sokaogon Chippewa Community, Wisconsin (See Home Page – Great Lakes) St. Croix Chippewa Indians of Wisconsin (See Home Page – Great Lakes)</p>
------------------------------	---------------------------------	---



Indian Family, Turtle Mountain Reservation, North Dakota, 1943. National Archives. <https://catalog.archives.gov/id/285396>

Sisseton-Wahpeton Oyate of the Lake Traverse Reservation, South Dakota (includes areas in North Dakota)

Sisseton and Wahpeton Bands of Santee Dakota

To hear modern Native Community names spoken aloud, see [National Indian Law Library](#).

Always consult the Native People themselves for most accurate information, either through their website or in person.

Current Community Headquarters: [Agency Village, South Dakota](#)

Citizen Archivist Catalog Tag: **NT527**

To find documents already tagged, copy and paste this tag into the [Advanced Online Catalog Search Form](#) in the "Tags" box. If documents are not tagged or you wish to contribute, see the [Citizen Archivist Program](#).

Personal archival assistance:

For additional help in finding records of the Lake Traverse Sisseton-Wahpeton Oyate, email the archivists at the National Archives at Kansas City (kansascity.archives@nara.gov) or contact the [National Archives in Washington D.C.](#) Organizations listed on the [North Dakota Native Communities](#) page may also provide research assistance.

Searching in the [National Archives Online Catalog](#)

Slashes (/) separate individual search strings. Copy and paste or type exactly, including quotation marks if present. Also, try using a word from each of the community's other names and locations. See associated video for more detailed instructions.

Suggested Search Terms: "[Sisseton-Wahpeton](#)" / "[Lake Traverse Indian](#)" / "[Lake Traverse Reservation](#)"

Related Searches: "[Roberts County](#)" "[South Dakota](#)" / "[Day County](#)" "[South Dakota](#)" / "[Codington County](#)" "[South Dakota](#)" / "[Marshall County](#)" "[South Dakota](#)" / "[Grant County](#)" "[South Dakota](#)" / "[Sargent County](#)" "[North Dakota](#)" / "[Richland County](#)" "[North Dakota](#)"

This community may also have been recorded as:

[Sisseton-Wahpeton Oyate](#) / [Sisseton-Wahpeton Sioux](#) / [Lake Traverse Tribe](#) / [Sisseton-Wahpeton Dakota](#) / [Lake Traverse Reservation](#)

Additional Resources: The following sources may provide important background information and ideas for additional search terms.

Lake Traverse Sisseton-Wahpeton Oyate website: <http://www.swo-nsn.gov/> and <http://www.earthskyweb.com/news.htm>

Wikipedia (general information only): https://en.wikipedia.org/wiki/Sisseton_Wahpeton_Oyate and https://en.wikipedia.org/wiki/Dakota_people and <https://en.wikipedia.org/wiki/Sioux>

Also see: An article about the Sisseton-Wahpeton Oyate on the Atka Lakota Museum and Cultural Center website at <http://aktalakota.stjo.org/site/News2?page=NewsArticle&id=8659> and the Minnesota Historical Society about the U.S. - Dakota War at <http://www.usdakotawar.org/>

Links to additional information (search each by tribe name):

Federal Register (recent rulings and issues): <https://www.federalregister.gov/>

Native Languages: <http://www.native-languages.org>

National Indian Law Library: <http://www.narf.org/nill/tribes/>

American Philosophical Society Indigenous Subject Guide: <https://search.amphilsoc.org/natam/search>

Library of Congress: <https://www.loc.gov/>

Bureau of Indian Affairs (BIA) Records (Record Group 75):

To focus on BIA records in the Online Catalog, use "advanced search" and enter 75 into the Record Group field.

Although important, the BIA is only one of many Federal agencies containing important records of Native Communities. For various reasons there are often periods of time where BIA records are not available for individual tribes. Other techniques should be used for these periods, such as searching by geographic area and/or time-period and widening the search to include ALL Federal agencies.

Community records could also be "buried" in BIA agency files not described in the Online Catalog in great enough detail to be searched directly by community name. Doing an advanced search using one or two words from the BIA office name or the entire office name in quotes, along with Record Group 75, may be beneficial. Some BIA offices known to hold **Lake Traverse Sisseton-Wahpeton Oyate** records follow:

1861-1876 Dalota Superintendency, 1871-1903 Devil's Lake Agency, 1875-1969 Sisseton Agency, 1903-1949 Fort Totten Agency, 1929-1970 Aberdeen Area Office

Spirit Lake Tribe, North Dakota

Sisseton and Wahpeton Dakota and the Cut-Head band of Yanktonai Nakota

To hear modern Native Community names spoken aloud, see [National Indian Law Library](#).

Always consult the Native People themselves for most accurate information, either through their website or in person.

Current Community Headquarters: **Fort Totten, North Dakota**

Citizen Archivist Catalog Tag: **NT415**

To find documents already tagged, copy and paste this tag into the [Advanced Online Catalog Search Form](#) in the "Tags" box. If documents are not tagged or you wish to contribute, see the [Citizen Archivist Program](#).

Personal archival assistance:

For additional help in finding records of the Spirit Lake Tribe, email the archivists at the National Archives at Kansas City (kansascity.archives@nara.gov), the National Archives at Denver (denver.archives@nara.gov), or contact the [National Archives in Washington D.C.](#) Organizations listed on the [North Dakota Native Communities](#) page may also provide research assistance.

Searching in the [National Archives Online Catalog](#)

Slashes (/) separate individual search strings. Copy and paste or type exactly, including quotation marks if present. Also, try using a word from each of the community's other names and locations. See associated video for more detailed instructions.

Suggested Search Terms: **"Spirit Lake Tribe" / "Devils Lake Sioux" / "Sullys Hill" Preserve**

Related Searches: **"Benson County" "North Dakota" / "Nelson County" "North Dakota" / "Ramsey County" "North Dakota" / "Eddy County" "North Dakota"**

This community may also have been recorded as: **Devils Lake Sioux / Fort Totten / Mni Wakan Oyate / Sullys Hill National Game Preserve / Devils Lake Sioux Reservation**

Additional Resources: The following sources may provide important background information and ideas for additional search terms.

Spirit Lake Tribe website: <http://www.spiritlakenation.com/> and <http://www.spiritlakenation.com/history/>

Wikipedia (general information only): https://en.wikipedia.org/wiki/Spirit_Lake_Tribe and https://en.wikipedia.org/wiki/Dakota_people

Also see: Lesson and documents from the state of North Dakota (grade 8) at <https://www.ndstudies.gov/gr8/content/unit-iii-waves-development-1861-1920/lesson-1-changing-landscapes/topic-4-reservation-boundaries/section-10-spirit-lake-reservation>

Links to additional Information (search each by tribe name):

Federal Register (recent rulings and issues): <https://www.federalregister.gov/>

Native Languages: <http://www.native-languages.org>

National Indian Law Library: <http://www.narf.org/nill/tribes/>

American Philosophical Society Indigenous Subject Guide: <https://search.amphilsoc.org/natam/search>

Library of Congress: <https://www.loc.gov/>

Bureau of Indian Affairs (BIA) Records (Record Group 75):

To focus on BIA records in the Online Catalog, use "advanced search" and enter 75 into the Record Group field.

Although important, the BIA is only one of many Federal agencies containing important records of Native Communities. For various reasons there are often periods of time where BIA records are not available for individual tribes. Other techniques should be used for these periods, such as searching by geographic area and/or time-period and widening the search to include ALL Federal agencies.

Community records could also be "buried" in BIA agency files not described in the Online Catalog in great enough detail to be searched directly by community name. Doing an advanced search using one or two words from the BIA office name or the entire office name in quotes, along with Record Group 75, may be beneficial. Some BIA offices known to hold **Spirit Lake Tribe** records follow:

1871-1903 Devil's Lake Agency, 1871-1947 Fort Totten Agency, 1922-1949 Turtle Mountain Consolidated Agency, 1929-1970 Aberdeen Area Office, 1947-1949 Turtle Mountain Consolidated Agency, 1959-1968 Aberdeen Area Office

Standing Rock Sioux Tribe of North & South Dakota

North Dakota: Primarily Yanktonai (including the Cuthead) Western Dakota - South Dakota: Primarily Hunkpapa and Blackfoot (Sisasapa) Lakota

To hear modern Native Community names spoken aloud, see [National Indian Law Library](#).

Always consult the Native People themselves for most accurate information, either through their website or in person.

Current Community Headquarters: Fort Yates, North Dakota

Citizen Archivist Catalog Tag: NT414

To find documents already tagged, copy and paste this tag into the [Advanced Online Catalog Search Form](#) in the "Tags" box. If documents are not tagged or you wish to contribute, see the [Citizen Archivist Program](#).

Personal archival assistance:

For additional help in finding records of the Standing Rock Sioux, email the archivists at the National Archives at Kansas City (kansascity.archives@nara.gov), the National Archives at Denver (denver.archives@nara.gov), or contact the [National Archives in Washington D.C.](#) Organizations listed on the [North Dakota Native Communities](#) page may also provide research assistance.

Searching in the [National Archives Online Catalog](#)

Slashes (/) separate individual search strings. Copy and paste or type exactly, including quotation marks if present. Also, try using a word from each of the community's other names and locations. See associated video for more detailed instructions.

Suggested Search Terms: "Standing Rock Sioux" / "Great Sioux Reservation"

Related Searches: "Sioux County" "North Dakota" / "Carson County" "South Dakota" / "Dewey County" "South Dakota" / "Ziebach County" "South Dakota"

This community may also have been recorded as: Standing Rock Sioux / Standing Rock Sioux Tribe / SRST / Great Sioux Reservation / Standing Rock Reservation

Additional Resources: The following sources may provide important background information and ideas for additional search terms.

Standing Rock Sioux website: <https://www.standingrock.org/>

Wikipedia (general information only): https://en.wikipedia.org/wiki/Standing_Rock_Indian_Reservation and https://en.wikipedia.org/wiki/Lakota_people and <https://en.wikipedia.org/wiki/Hunkpapa> and <https://en.wikipedia.org/wiki/Sisasapa> and https://en.wikipedia.org/wiki/Dakota_people and <https://en.wikipedia.org/wiki/Sioux>

Also see: An article about the Standing Rock Sioux on the Atka Lakota Museum and Cultural Center website at <http://aktalakota.stjo.org/site/News2?page=NewsArticle&id=8660>

Links to additional information (search each by tribe name):

Federal Register (recent rulings and issues): <https://www.federalregister.gov/>

Native Languages: <http://www.native-languages.org>

National Indian Law Library: <http://www.narf.org/nill/tribes/>

American Philosophical Society Indigenous Subject Guide: <https://search.amphilsoc.org/natam/search>

Library of Congress: <https://www.loc.gov/>

Bureau of Indian Affairs (BIA) Records (Record Group 75):

To focus on BIA records in the Online Catalog, use "advanced search" and enter 75 into the Record Group field.

Although important, the BIA is only one of many Federal agencies containing important records of Native Communities. For various reasons there are often periods of time where BIA records are not available for individual tribes. Other techniques should be used for these periods, such as searching by geographic area and/or time-period and widening the search to include ALL Federal agencies.

Community records could also be "buried" in BIA agency files not described in the Online Catalog in great enough detail to be searched directly by community name. Doing an advanced search using one or two words from the BIA office name or the entire office name in quotes, along with Record Group 75, may be beneficial. Some BIA offices known to hold **Standing Rock Sioux** records follow:

1864-1974 Standing Rock Agency, 1869-1949 Cheyenne River Agency, 1929-1970 Aberdeen Area Office

Three Affiliated Tribes of the Fort Berthold Reservation

Mandan, Hidatsa, Arikara (Sahnish), and some Assiniboin (Assiniboine)

To hear modern Native Community names spoken aloud, see [National Indian Law Library](#).

Always consult the Native People themselves for most accurate information, either through their website or in person.

Current Community Headquarters: **New Town, North Dakota**

Citizen Archivist Catalog Tag: **NT413**

To find documents already tagged, copy and paste this tag into the [Advanced Online Catalog Search Form](#) in the "Tags" box. If documents are not tagged or you wish to contribute, see the [Citizen Archivist Program](#).

Personal archival assistance:

For additional help in finding records of the Three Affiliated Tribes, email the archivists at the National Archives at Kansas City (kansascity.archives@nara.gov), the National Archives at Denver (denver.archives@nara.gov), or contact the [National Archives in Washington D.C.](#) Organizations listed on the [North Dakota Native Communities](#) page may also provide research assistance.

Searching in the [National Archives Online Catalog](#)

Slashes (/) separate individual search strings. Copy and paste or type exactly, including quotation marks if present. Also, try using a word from each of the community's other names and locations. See associated video for more detailed instructions.

Suggested Search Terms: **Mandan Hidatsa Arikara / "Three Affiliated Tribes"**

Related Searches: **"Dunn County" "North Dakota" / "McLean County" "North Dakota" / McKenzie County" "North Dakota" / "Mountrail County" "North Dakota" / "Ward County" "North Dakota" / "Mercer County" "North Dakota"**

This community may also have been recorded as: **Mandan, Hidatsa, and Arikara Nation / MHA Nation / Three Affiliated Tribes / Mandan / Hidatsa "willows," (also known as Nuxbaaga or "original people") / Arikara (also known as Sahnish) / Fort Berthold Reservation /** (erroniously thought to be Gros Ventre in some records, for instance the Bureau of Indian Affairs compiled the Tribe's Base Roll listing all Hidatsa as "G.V.", for Gros Ventre)

Additional Resources: The following sources may provide important background information and ideas for additional search terms.

Three Affiliated Tribes website: <https://www.mhanation.com/>

Wikipedia (general information only): https://en.wikipedia.org/wiki/Mandan,_Hidatsa,_and_Arikara_Nation and

<https://en.wikipedia.org/wiki/Mandan> and <https://en.wikipedia.org/wiki/Hidatsa> and <https://en.wikipedia.org/wiki/Arikara>

Also see: National Museum of the American Indian at <http://nmai.si.edu/nk360/plains-belonging-nation/three-affiliated-tribes.cshtml> and the Library of Congress at <https://www.loc.gov/law/help/american-indian-consts/PDF/37026786.pdf> and state of North Dakota lesson (grade 4) at <https://www.ndstudies.gov/gr4/american-indians-north-dakota/section-2-fort-berthold-reservation> and Buffalo Bird Woman's Garden at <http://digital.library.upenn.edu/women/buffalo/garden/garden.html>

Links to additional Information (search each by tribe name):

Federal Register (recent rulings and issues): <https://www.federalregister.gov/>

Native Languages: <http://www.native-languages.org>

National Indian Law Library: <http://www.narf.org/nill/tribes/>

American Philosophical Society Indigenous Subject Guide: <https://search.amphilsoc.org/natam/search>

Library of Congress: <https://www.loc.gov/>

Bureau of Indian Affairs (BIA) Records (Record Group 75):

To focus on BIA records in the Online Catalog, use "advanced search" and enter 75 into the Record Group field.

Although important, the BIA is only one of many Federal agencies containing important records of Native Communities. For various reasons there are often periods of time where BIA records are not available for individual tribes. Other techniques should be used for these periods, such as searching by geographic area and/or time-period and widening the search to include ALL Federal agencies.

Community records could also be "buried" in BIA agency files not described in the Online Catalog in great enough detail to be searched directly by community name. Doing an advanced search using one or two words from the BIA office name or the entire office name in quotes, along with Record Group 75, may be beneficial. Some BIA offices known to hold **Mandan, Hidatsa, and Arikara** records follow:

1824-1866 Upper Missouri Agency, 1824-1838 Mandan Sub-Agency, 1864-1947 Fort Berthold Agency, 1929-1970 Aberdeen Area Office

Turtle Mountain Band of Chippewa Indians of North Dakota

Pembina Band of Ojibwe (Chippewa) and Metis

To hear modern Native Community names spoken aloud, see [National Indian Law Library](#).

Always consult the Native People themselves for most accurate information, either through their website or in person.

Current Community Headquarters: **Belcourt, North Dakota**

Citizen Archivist Catalog Tag: **NT412**

To find documents already tagged, copy and paste this tag into the [Advanced Online Catalog Search Form](#) in the "Tags" box. If documents are not tagged or you wish to contribute, see the [Citizen Archivist Program](#).

Personal archival assistance:

For additional help in finding records of the Turtle Mountain Chippewa, email the archivists at the National Archives at Kansas City (kansascity.archives@nara.gov), the National Archives at Denver (denver.archives@nara.gov), or contact the [National Archives in Washington D.C.](#) Organizations listed on the [North Dakota Native Communities](#) page may also provide research assistance.

Searching in the [National Archives Online Catalog](#)

Slashes (/) separate individual search strings. Copy and paste or type exactly, including quotation marks if present. Also, try using a word from each of the community's other names and locations. See associated video for more detailed instructions.

Suggested Search Terms: **"Turtle Mountain Chippewa" / "Turtle Mountain" (advanced search using Record Group 75)**

Related Searches: **"Rolette County" "North Dakota" / "Williams County" "North Dakota" / "Divide County" "North Dakota" / "McKenzie County" "North Dakota" / "Sheridan County" Montana / "Richland County" Montana / "Roosevelt County" Montana**

This community may also have been recorded as: **Turtle Mountain Chippewa / Mikinaakwajiwing (Ojibwe language) / Ojibwa / Ojibway / Ojibwe / Saulteaux / Anishinabe / Turtle Mountain Reservation / Trenton Indian Service Area**

Additional Resources: The following sources may provide important background information and ideas for additional search terms.

Turtle Mountain Chippewa website: <https://tmchippewa.com/>

Wikipedia (general information only): https://en.wikipedia.org/wiki/Turtle_Mountain_Band_of_Chippewa_Indians and <https://en.wikipedia.org/wiki/Ojibwe> and https://en.wikipedia.org/wiki/M%C3%A9tis_in_the_United_States

Also see: Additional tribal information at <http://tmbci.kkbold.com/>

Links to additional Information (search each by tribe name):

Federal Register (recent rulings and issues): <https://www.federalregister.gov/>

Native Languages: <http://www.native-languages.org>

National Indian Law Library: <http://www.narf.org/nill/tribes/>

American Philosophical Society Indigenous Subject Guide: <https://search.amphilsoc.org/natam/search>

Library of Congress: <https://www.loc.gov/>

Bureau of Indian Affairs (BIA) Records (Record Group 75):

To focus on BIA records in the Online Catalog, use "advanced search" and enter 75 into the Record Group field.

Although important, the BIA is only one of many Federal agencies containing important records of Native Communities. For various reasons there are often periods of time where BIA records are not available for individual tribes. Other techniques should be used for these periods, such as searching by geographic area and/or time-period and widening the search to include ALL Federal agencies.

Community records could also be "buried" in BIA agency files not described in the Online Catalog in great enough detail to be searched directly by community name. Doing an advanced search using one or two words from the BIA office name or the entire office name in quotes, along with Record Group 75, may be beneficial. Some BIA offices known to hold **Turtle Mountain Chippewa** records follow:

1871-1903 Devil's Lake Agency, 1881-1955 Turtle Mountain Agency, 1884-1910 Fort Totten Agency, 1929-1970 Aberdeen Area Office

South Dakota Native Communities

To perform a search of more general records of South Dakota's Native People in the [National Archives Online Catalog](#), use **Advanced Search**. Enter "**South Dakota**" **NOT** **Alaska** in the search box and **75** in the Record Group box (Bureau of Indian Affairs). Additional records can be found using a general search with the search phrase "**South Dakota Indian**". Also, searching using the terms or phrases specific to individual tribes listed in both the [Historic](#) and [Modern](#) sections below should provide useful results.

There are several great resources available for general information and material for kids about the Native People of South Dakota, such as the [Native Languages](#) and [National Museum of the American Indian](#) websites. Type **South Dakota** into the main search box for both.

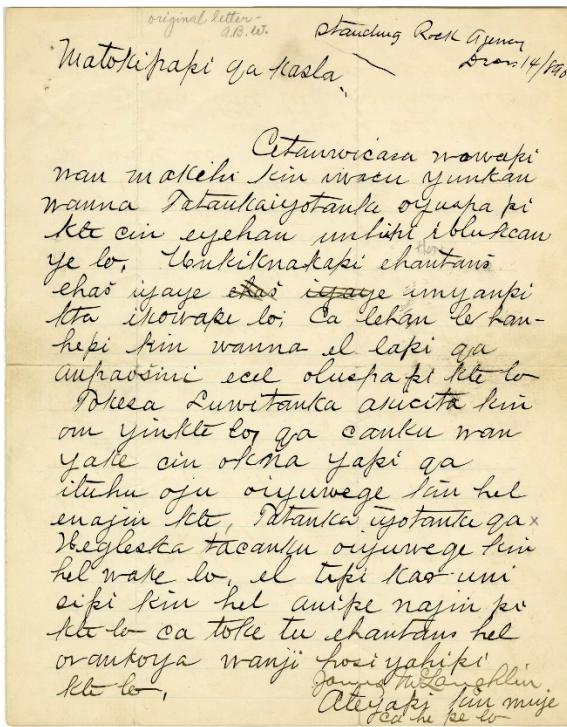
Related state agencies and universities may also hold records or information about these communities. Examples might include the [South Dakota State Historical Society and Archives](#), the [South Dakota Office of Indian Education](#), or one of the Sioux museums in the state such as the [Atka Lakota Museum and Cultural Center](#).

Historic South Dakota Native Communities

Federally Recognized Native Communities in South Dakota (2018)

[Cheyenne River Sioux Tribe of the Cheyenne River Reservation, South Dakota](#)
[Crow Creek Sioux Tribe of the Crow Creek Reservation, South Dakota](#)
[Flandreau Santee Sioux Tribe of South Dakota](#)
[Lower Brule Sioux Tribe of the Lower Brule Reservation, South Dakota](#)
[Oglala Sioux Tribe](#)
[Rosebud Sioux Tribe of the Rosebud Indian Reservation, South Dakota](#)
[Sisseton-Wahpeton Oyate of the Lake Traverse Reservation, South Dakota](#)
[Standing Rock Sioux Tribe of North & South Dakota](#)
[Yankton Sioux Tribe of South Dakota](#)

Document Samples



Letter written in Lakota by James McLaughlin, Standing Rock Indian Agent, directing the arrest of Sitting Bull. December 14, 1890. National Archives <https://catalog.archives.gov/id/3887740>

Copy of a painting of Sitting Bull, date and artist unknown. From papers of Archivist, Victor Gondos Jr. 1851-1963. National Archives. <https://catalog.archives.gov/id/70253499>

Historic South Dakota Native Communities

For a map of historic language areas in South Dakota, see [Native Languages](#).

Instructions: Slashes separate search terms and phrases. **Copy and paste exact phrase** into the [Online Catalog](#), including quotation marks, if present. Always be willing to experiment with search terms. Quoted phrases return very different results than non-quoted phrases. Using the geographic location or most relevant word(s) from the tribal name with one of the following words may also prove beneficial: **Indian** (most useful), **Native**, **Tribe**, **Reservation**, or **Village**. Be sure to link to modern tribal pages. They contain current information and more possible search terms.

Historic Tribes	Suggested Online Catalog search term(s)	Associated Federally Recognized Tribal Communities 2018
Arikara	Arikara Indian / "Fort Berthold"	North Dakota: Three Affiliated Tribes of the Fort Berthold Reservation
Cheyenne	"Cheyenne Indian" NOT River / "Northern Cheyenne" / Cheyenne Arapaho Indian	Montana: Northern Cheyenne Tribe of the Northern Cheyenne Indian Reservation, Montana (See Home Page – Northern Plateau) Oklahoma Cheyenne and Arapaho Tribes, Oklahoma (See Home Page – Central Plains)
Dakota Sioux	"Sioux Indian" / Wahpeton / Wahpekute / "Santee Sioux" / Sisseton / Mdewakanton / "Lower Sioux" / "Upper Sioux"	Minnesota: Lower Sioux Indian Community in the State of Minnesota Prairie Island Indian Community in the State of Minnesota Shakopee Mdewakanton Sioux Community of Minnesota Upper Sioux Community, Minnesota Montana: Assiniboine and Sioux Tribes of the Fort Peck Indian Reservation, Montana (See Home Page – Northern Plateau) Nebraska: Santee Sioux Nation, Nebraska North Dakota: Spirit Lake Tribe, North Dakota North and South Dakota: Standing Rock Sioux Tribe of North & South Dakota South Dakota: Crow Creek Sioux Tribe of the Crow Creek Reservation, South Dakota Flandreau Santee Sioux Tribe of South Dakota Sisseton-Wahpeton Oyate of the Lake Traverse Reservation, South Dakota
Lakota Sioux	"Sioux Indian" / Lakota Indian / Miniconjou / Hunkpapa / Unkpapa / Sicangu / "Brule Sioux" / "Oglala Sioux" / Itazipco / "Sans Arc Sioux" / Sicasapa / "Blackfoot Sioux" / O'Henumpa / "Two Kettle" Sioux	North and South Dakota: Standing Rock Sioux Tribe of North & South Dakota South Dakota: Cheyenne River Sioux Tribe of the Cheyenne River Reservation, South Dakota Lower Brule Sioux Tribe of the Lower Brule Reservation, South Dakota Oglala Sioux Tribe Rosebud Sioux Tribe of the Rosebud Indian Reservation, South Dakota
Ponca	"Ponca Indian" / "Ponca Tribe"	Nebraska: Ponca Tribe of Nebraska Oklahoma: Ponca Tribe of Indians of Oklahoma (See Home Page – Central Plains)

Cheyenne River Sioux Tribe of the Cheyenne River Reservation, South Dakota

Minnecoujou, Two Kettle (Oohenunpa), Sans Arc (Itazipco) and Blackfoot (Sihásapa) Lakota

To hear modern Native Community names spoken aloud, see [National Indian Law Library](#).

Always consult the Native People themselves for most accurate information, either through their website or in person.

Current Community Headquarters: **Eagle Butte, South Dakota**

Citizen Archivist Catalog Tag: **NT529**

To find documents already tagged, copy and paste this tag into the [Advanced Online Catalog Search Form](#) in the "Tags" box. If documents are not tagged or you wish to contribute, see the [Citizen Archivist Program](#).

Personal archival assistance:

For additional help in finding records of the Cheyenne River Sioux Community, email the archivists at the National Archives at Kansas City (kansascity.archives@nara.gov), the National Archives at Denver (denver.archives@nara.gov), or contact the [National Archives in Washington D.C.](#) Organizations listed on the [South Dakota Native Communities](#) page may also provide research assistance.

Searching in the [National Archives Online Catalog](#)

Slashes (/) separate individual search strings. Copy and paste or type exactly, including quotation marks if present. Also, try using a word from each of the community's other names and locations. See associated video for more detailed instructions.

Suggested Search Terms: **"Cheyenne River Sioux" / "Cheyenne River Reservation" / "Cheyenne River" (advanced search using Record Group 75)**

Related Searches: **"Perkins County" "South Dakota" / "Dewey County" "South Dakota" / "Zieback County" "South Dakota"**

This community may also have been recorded as:
Cheyenne River / Cheyenne River Sioux / Titunwan / CRIR / CRST / Cheyenne River Lakota Nation / Cheyenne River Oyate / Great Sioux Reservation / Cheyenne River Soux Reservation

Additional Resources: The following sources may provide important background information and ideas for additional search terms.

Cheyenne River Sioux website: <http://www.sioux.org/>

Wikipedia (general information only): https://en.wikipedia.org/wiki/Cheyenne_River_Indian_Reservation and https://en.wikipedia.org/wiki/Lakota_people and <https://en.wikipedia.org/wiki/Sioux>

Also see: An article about the Cheyenne River Sioux on the Atka Lakota Museum and Cultural Center website at <http://aktalakota.stjo.org/site/News2?page=NewsArticle&id=8653> and the Cheyenne River Youth Project at <https://lakotayouth.org/>

Links to additional information (search each by tribe name):

Federal Register (recent rulings and issues): <https://www.federalregister.gov/>

Native Languages: <http://www.native-languages.org>

National Indian Law Library: <http://www.narf.org/nill/tribes/>

American Philosophical Society Indigenous Subject Guide: <https://search.amphilsoc.org/natam/search>

Library of Congress: <https://www.loc.gov/>

Bureau of Indian Affairs (BIA) Records (Record Group 75):

To focus on BIA records in the Online Catalog, use "advanced search" and enter 75 into the Record Group field.

Although important, the BIA is only one of many Federal agencies containing important records of Native Communities. For various reasons there are often periods of time where BIA records are not available for individual tribes. Other techniques should be used for these periods, such as searching by geographic area and/or time-period and widening the search to include ALL Federal agencies.

Community records could also be "buried" in BIA agency files not described in the Online Catalog in great enough detail to be searched directly by community name. Doing an advanced search using one or two words from the BIA office name or the entire office name in quotes, along with Record Group 75, may be beneficial. Some BIA offices known to hold **Cheyenne River Sioux** records follow:

1869-1949 Cheyenne River Agency, 1929-1970 Aberdeen Area Office

Crow Creek Sioux Tribe of the Crow Creek Reservation, South Dakota

Mdewakanton Dakota, Yankton Nakota, and lower Yanktonai Nakota

To hear modern Native Community names spoken aloud, see [National Indian Law Library](#).

Always consult the Native People themselves for most accurate information, either through their website or in person.

Current Community Headquarters: **Fort Thompson, South Dakota**

Citizen Archivist Catalog Tag: **NT533**

To find documents already tagged, copy and paste this tag into the [Advanced Online Catalog Search Form](#) in the "Tags" box. If documents are not tagged or you wish to contribute, see the [Citizen Archivist Program](#).

Personal archival assistance:

For additional help in finding records of the Crow Creek Sioux, email the archivists at the National Archives at Kansas City (kansascity.archives@nara.gov) or contact the [National Archives in Washington D.C.](#) Organizations listed on the [South Dakota Native Communities](#) page may also provide research assistance.

Searching in the [National Archives Online Catalog](#)

Slashes (/) separate individual search strings. Copy and paste or type exactly, including quotation marks if present. Also, try using a word from each of the community's other names and locations. See associated video for more detailed instructions.

Suggested Search Terms: "Crow Creek Sioux" NOT "Puerto Rican" / "Crow Creek" (advanced search using Record Group 75)

Related Searches: "Buffalo County" "South Dakota" / "Hyde County" "South Dakota" / "Hughes County" "South Dakota"

This community may also have been recorded as: Crow Creek / Mdewakanton / Mankato survivors / Kħaŋǵi Wakpá Oyánke / Great Sioux Reservation / Crow Creek Sioux Reservation / Crow Creek Reservation

Additional Resources: The following sources may provide important background information and ideas for additional search terms.

Crow Creek Sioux website: <http://www.crowcreekconnections.org/>

Wikipedia (general information only): https://en.wikipedia.org/wiki/Crow_Creek_Indian_Reservation and <https://en.wikipedia.org/wiki/Mdewakanton> and https://en.wikipedia.org/wiki/Dakota_people and <https://en.wikipedia.org/wiki/Sioux>

Also see: An article about the Crow Creek Sioux on the Atka Lakota Museum and Cultural Center website at <http://aktalakota.stjo.org/site/News2?page=NewsArticle&id=8654> and the Minnesota Historical Society about the U.S. - Dakota War at <http://www.usdakotawar.org/>

Links to additional Information (search each by tribe name):

Federal Register (recent rulings and issues): <https://www.federalregister.gov/>

Native Languages: <http://www.native-languages.org>

National Indian Law Library: <http://www.narf.org/nill/tribes/>

American Philosophical Society Indigenous Subject Guide: <https://search.amphilsoc.org/natam/search>

Library of Congress: <https://www.loc.gov/>

Bureau of Indian Affairs (BIA) Records (Record Group 75):

To focus on BIA records in the Online Catalog, use "advanced search" and enter 75 into the Record Group field.

Although important, the BIA is only one of many Federal agencies containing important records of Native Communities. For various reasons there are often periods of time where BIA records are not available for individual tribes. Other techniques should be used for these periods, such as searching by geographic area and/or time-period and widening the search to include ALL Federal agencies.

Community records could also be "buried" in BIA agency files not described in the Online Catalog in great enough detail to be searched directly by community name. Doing an advanced search using one or two words from the BIA office name or the entire office name in quotes, along with Record Group 75, may be beneficial. Some BIA offices known to hold **Crow Creek Sioux** records follow:

1824-1866 St Peters Agency, 1874 -1949 Crow Creek Agency, 1918-1971 Pierre Agency

Flandreau Santee Sioux Tribe of South Dakota

Mdewakanton Dakota

To hear modern Native Community names spoken aloud, see [National Indian Law Library](#).

Always consult the Native People themselves for most accurate information, either through their website or in person.

Current Community Headquarters: **Flandreau, South Dakota**

Citizen Archivist Catalog Tag: **NT531**

To find documents already tagged, copy and paste this tag into the [Advanced Online Catalog Search Form](#) in the "Tags" box. If documents are not tagged or you wish to contribute, see the [Citizen Archivist Program](#).

Personal archival assistance:

For additional help in finding records of the Flandreau Santee Sioux Community, email the archivists at the National Archives at Denver (denver.archives@nara.gov) or contact the [National Archives in Washington D.C.](#) Organizations listed on the [South Dakota Native Communities](#) page may also provide research assistance.

Searching in the [National Archives Online Catalog](#)

Slashes (/) separate individual search strings. Copy and paste or type exactly, including quotation marks if present. Also, try using a word from each of the community's other names and locations. See associated video for more detailed instructions.

Suggested Search Terms: **Flandreau NOT Alaska (advanced search using Record Group 75) / Flandreau Sioux NOT Commerce**

Related Searches: **"Moody County" "South Dakota"**

This community may also have been recorded as:
Flandreau Santee Sioux / Flandreau / Mdewakantonwan / Dakota ("friend" or "ally") / Prairie Coteau / Wakpaipaksan Okodakiciye / Bend in the River Church / Flandreau Santee Sioux Reservation

Additional Resources: The following sources may provide important background information and ideas for additional search terms.

Flandreau Santee Sioux website: <http://santeesioux.com/>

Wikipedia (general information only): https://en.wikipedia.org/wiki/Flandreau_Santee_Sioux_Tribe and https://en.wikipedia.org/wiki/Dakota_people and <https://en.wikipedia.org/wiki/Mdewakanton> and <https://en.wikipedia.org/wiki/Sioux>

Also see: An article about the Flandreau Santee Sioux on the Atka Lakota Museum and Cultural Center website at <http://aktalakota.stjo.org/site/News2?page=NewsArticle&id=8655> and an article about Bend in the River Church at http://santeesioux.com/wp-content/uploads/2015/08/fsst_experiment_of_faith_2015.pdf

Links to additional Information (search each by tribe name):

Federal Register (recent rulings and issues): <https://www.federalregister.gov/>

Native Languages: <http://www.native-languages.org>

National Indian Law Library: <http://www.narf.org/nill/tribes/>

American Philosophical Society Indigenous Subject Guide: <https://search.amphilsoc.org/natam/search>

Library of Congress: <https://www.loc.gov/>

Bureau of Indian Affairs (BIA) Records (Record Group 75):

To focus on BIA records in the Online Catalog, use "advanced search" and enter 75 into the Record Group field.

Although important, the BIA is only one of many Federal agencies containing important records of Native Communities. For various reasons there are often periods of time where BIA records are not available for individual tribes. Other techniques should be used for these periods, such as searching by geographic area and/or time-period and widening the search to include ALL Federal agencies.

Community records could also be "buried" in BIA agency files not described in the Online Catalog in great enough detail to be searched directly by community name. Doing an advanced search using one or two words from the BIA office name or the entire office name in quotes, along with Record Group 75, may be beneficial. Some BIA offices known to hold **Flandreau Santee Sioux** records follow:

1878-1947 Pine Ridge Agency, 1879-1903 Omaha and Winnebago Agency, 1902-1947 Flandreau School and Agency, 1909-1947 Finance Division, 1922-1947 Red Lake Agency, 1947- Winnebago Agency, 1949-2001 Aberdeen Area Office,

Lower Brule Sioux Tribe of the Lower Brule Reservation, South Dakota

Sicangu (Brule) Lakota

To hear modern Native Community names spoken aloud, see [National Indian Law Library](#).

Always consult the Native People themselves for most accurate information, either through their website or in person.

Current Community Headquarters: **Lower Brule, South Dakota**

Citizen Archivist Catalog Tag: **NT530**

To find documents already tagged, copy and paste this tag into the [Advanced Online Catalog Search Form](#) in the "Tags" box. If documents are not tagged or you wish to contribute, see the [Citizen Archivist Program](#).

Personal archival assistance:

For additional help in finding records of the Lower Brule Sioux, email the archivists at the National Archives at Kansas City (kansascity.archives@nara.gov), the National Archives at Denver (denver.archives@nara.gov), or contact the [National Archives in Washington D.C.](#) Organizations listed on the [South Dakota Native Communities](#) page may also provide research assistance.

Searching in the [National Archives Online Catalog](#)

Slashes (/) separate individual search strings. Copy and paste or type exactly, including quotation marks if present. Also, try using a word from each of the community's other names and locations. See associated video for more detailed instructions.

Suggested Search Terms: **"Lower Brule" NOT "Data File" / "Lower Brule" (advanced search using Record Group 75)**

Related Searches: **"Lyman County" "South Dakota" / "Stanley County" "South Dakota"**

This community may also have been recorded as: **Lower Brule / Lower Brulé Lakota / Kul Wicasa Oyate / Sicangu (Burnt Thigh) Lakota / Great Sioux Reservation / Lower Brule Reservation**

Additional Resources: The following sources may provide important background information and ideas for additional search terms.

Lower Brule Sioux website: <https://www.lowerbrulesiouxtribe.com/>

Wikipedia (general information only): https://en.wikipedia.org/wiki/Lower_Brule_Indian_Reservation and <https://en.wikipedia.org/wiki/Brul%C3%A9> and https://en.wikipedia.org/wiki/Lakota_people and <https://en.wikipedia.org/wiki/Sioux>

Also see: An article about the Lower Brule Sioux on the Atka Lakota Museum and Cultural Center website at <http://aktalakota.stjo.org/site/News2?page=NewsArticle&id=8656>

Links to additional Information (search each by tribe name):

Federal Register (recent rulings and issues): <https://www.federalregister.gov/>

Native Languages: <http://www.native-languages.org>

National Indian Law Library: <http://www.narf.org/niil/tribes/>

American Philosophical Society Indigenous Subject Guide: <https://search.amphilsoc.org/natam/search>

Library of Congress: <https://www.loc.gov/>

Bureau of Indian Affairs (BIA) Records (Record Group 75):

To focus on BIA records in the Online Catalog, use "advanced search" and enter 75 into the Record Group field.

Although important, the BIA is only one of many Federal agencies containing important records of Native Communities. For various reasons there are often periods of time where BIA records are not available for individual tribes. Other techniques should be used for these periods, such as searching by geographic area and/or time-period and widening the search to include ALL Federal agencies.

Community records could also be "buried" in BIA agency files not described in the Online Catalog in great enough detail to be searched directly by community name. Doing an advanced search using one or two words from the BIA office name or the entire office name in quotes, along with Record Group 75, may be beneficial. Some BIA offices known to hold **Lower Brule Sioux** records follow:

1874 -1949 Crow Creek Agency, 1918-1971 Pierre Agency, 1929-1970 Aberdeen Area Office, 1959-1968 Aberdeen Area Office

Oglala Sioux Tribe

Oglala Lakota

To hear modern Native Community names spoken aloud, see [National Indian Law Library](#).

Always consult the Native People themselves for most accurate information, either through their website or in person.

Current Community Headquarters: **Pine Ridge, South Dakota**

Citizen Archivist Catalog Tag: **NT532**

To find documents already tagged, copy and paste this tag into the [Advanced Online Catalog Search Form](#) in the "Tags" box. If documents are not tagged or you wish to contribute, see the [Citizen Archivist Program](#).

Personal archival assistance:

For additional help in finding records of the Oglala Sioux, email the archivists at the National Archives at Kansas City (kansascity.archives@nara.gov), the National Archives at Denver (denver.archives@nara.gov), or contact the [National Archives in Washington D.C.](#) Organizations listed on the [South Dakota Native Communities](#) page may also provide research assistance.

Searching in the [National Archives Online Catalog](#)

Slashes (/) separate individual search strings. Copy and paste or type exactly, including quotation marks if present. Also, try using a word from each of the community's other names and locations. See associated video for more detailed instructions.

Suggested Search Terms: **"Oglala Sioux" / "Pine Ridge" / "Sioux NOT Commerce" / "Great Sioux Reservation"**

Related Searches: **"Washabaugh County" "South Dakota" / "Jackson County" "South Dakota" / "Shannon County" "South Dakota" / "Bennett County" "South Dakota"**

This community may also have been recorded as: **Oglala Sioux Tribe of the Pine Ridge Reservation, South Dakota / OST / Oglala Lakota / Oge'lala / "to scatter one's own" / Great Sioux Reservation / Pine Ridge Reservation / Pine Ridge Indian Reservation / Great Sioux Reservation**

Additional Resources: The following sources may provide important background information and ideas for additional search terms.

Oglala Sioux website: <https://oglalalakotanation.info/index.html>

Wikipedia (general information only): https://en.wikipedia.org/wiki/Oglala_Lakota and https://en.wikipedia.org/wiki/Lakota_people and <https://en.wikipedia.org/wiki/Sioux>

Also see: Oglala Sioux Newsletter at <https://oglalalakotanation.info/oln-news.html> and an article about the Oglala [Pine Ridge] Sioux on the Atka Lakota Museum and Cultural Center website at <http://aktalakota.stjo.org/site/News2?page=NewsArticle&id=8657>

Links to additional Information (search each by tribe name):

Federal Register (recent rulings and issues): <https://www.federalregister.gov/>

Native Languages: <http://www.native-languages.org>

National Indian Law Library: <http://www.narf.org/nill/tribes/>

American Philosophical Society Indigenous Subject Guide: <https://search.amphilsoc.org/natam/search>

Library of Congress: <https://www.loc.gov/>

Bureau of Indian Affairs (BIA) Records (Record Group 75):

To focus on BIA records in the Online Catalog, use "advanced search" and enter 75 into the Record Group field.

Although important, the BIA is only one of many Federal agencies containing important records of Native Communities. For various reasons there are often periods of time where BIA records are not available for individual tribes. Other techniques should be used for these periods, such as searching by geographic area and/or time-period and widening the search to include ALL Federal agencies.

Community records could also be "buried" in BIA agency files not described in the Online Catalog in great enough detail to be searched directly by community name. Doing an advanced search using one or two words from the BIA office name or the entire office name in quotes, along with Record Group 75, may be beneficial. Some BIA offices known to hold **Oglala Sioux** records follow:

1867-1967 Pine Ridge Agency, 1929-1970 Aberdeen Area Office

Rosebud Sioux Tribe of the Rosebud Indian Reservation, South Dakota

Teton Lakota and Sicangu (Brule) Lakota

To hear modern Native Community names spoken aloud, see [National Indian Law Library](#).

Always consult the Native People themselves for most accurate information, either through their website or in person.

Current Community Headquarters: **Rosebud, South Dakota**

Citizen Archivist Catalog Tag: **NT526**

To find documents already tagged, copy and paste this tag into the [Advanced Online Catalog Search Form](#) in the "Tags" box. If documents are not tagged or you wish to contribute, see the [Citizen Archivist Program](#).

Personal archival assistance:

For additional help in finding records of the Rosebud Sioux, email the archivists at the National Archives at Kansas City (kansascity.archives@nara.gov), the National Archives at Denver (denver.archives@nara.gov), or contact the [National Archives in Washington D.C.](#) Organizations listed on the [South Dakota Native Communities](#) page may also provide research assistance.

Searching in the [National Archives Online Catalog](#)

Slashes (/) separate individual search strings. Copy and paste or type exactly, including quotation marks if present. Also, try using a word from each of the community's other names and locations. See associated video for more detailed instructions.

Suggested Search Terms: **"Rosebud Sioux" / "Great Sioux Reservation" / "Upper Brule" / "Brule Sioux"**

Related Searches: **"Mellette County" "South Dakota" / "Todd County" "South Dakota" / "Tripp County" "South Dakota" / "Lyman County" "South Dakota"**

This community may also have been recorded as:
Rosebud Sioux / Sičhánŋu Oyáte / Upper Brulé Sioux Nation / Sicangu Lakota / Rosebud Sioux Tribe / RST / "Burnt Thigh Nation" / Brulé Sioux / Great Sioux Reservation / Rosebud Reservation / Rosebud Indian Reservation

Additional Resources: The following sources may provide important background information and ideas for additional search terms.

Rosebud Sioux website: <https://www.rosebudsiouxtribe-nsn.gov/>

Wikipedia (general information only): https://en.wikipedia.org/wiki/Rosebud_Indian_Reservation and <https://en.wikipedia.org/wiki/Brul%C3%A9> and https://en.wikipedia.org/wiki/Lakota_people and <https://en.wikipedia.org/wiki/Sioux>

Also see: National Public Radio article at <https://www.npr.org/2017/08/12/542656215/going-home-series-south-dakota> and an article at the Atka Lakota Museum website at <http://aktalakota.stjo.org/site/News2?page=NewsArticle&id=8658>

Links to additional information (search each by tribe name):

Federal Register (recent rulings and issues): <https://www.federalregister.gov/>

Native Languages: <http://www.native-languages.org>

National Indian Law Library: <http://www.narf.org/nill/tribes/>

American Philosophical Society Indigenous Subject Guide: <https://search.amphilsoc.org/natam/search>

Library of Congress: <https://www.loc.gov/>

Bureau of Indian Affairs (BIA) Records (Record Group 75):

To focus on BIA records in the Online Catalog, use "advanced search" and enter 75 into the Record Group field.

Although important, the BIA is only one of many Federal agencies containing important records of Native Communities. For various reasons there are often periods of time where BIA records are not available for individual tribes. Other techniques should be used for these periods, such as searching by geographic area and/or time-period and widening the search to include ALL Federal agencies.

Community records could also be "buried" in BIA agency files not described in the Online Catalog in great enough detail to be searched directly by community name. Doing an advanced search using one or two words from the BIA office name or the entire office name in quotes, along with Record Group 75, may be beneficial. Some BIA offices known to hold **Rosebud Sioux** records follow:

1861-1966 Rosebud Agency, 1929-1970 Aberdeen Area Office

Sisseton-Wahpeton Oyate of the Lake Traverse Reservation, South Dakota

Sisseton and Wahpeton Bands of Santee Dakota

To hear modern Native Community names spoken aloud, see [National Indian Law Library](#).

Always consult the Native People themselves for most accurate information, either through their website or in person.

Current Community Headquarters: **Agency Village, South Dakota**

Citizen Archivist Catalog Tag: **NT527**

To find documents already tagged, copy and paste this tag into the [Advanced Online Catalog Search Form](#) in the "Tags" box. If documents are not tagged or you wish to contribute, see the [Citizen Archivist Program](#).

Personal archival assistance:

For additional help in finding records of the Lake Traverse Sisseton-Wahpeton Oyate, email the archivists at the National Archives at Kansas City (kansascity.archives@nara.gov), the National Archives at Denver (denver.archives@nara.gov), or contact the [National Archives in Washington D.C.](#) Organizations listed on the [South Dakota Native Communities](#) page may also provide research assistance.

Searching in the [National Archives Online Catalog](#)

Slashes (/) separate individual search strings. Copy and paste or type exactly, including quotation marks if present. Also, try using a word from each of the community's other names and locations. See associated video for more detailed instructions.

Suggested Search Terms: **"Sisseton-Wahpeton" / "Lake Traverse Indian" / "Lake Traverse Reservation"**

Related Searches: **"Roberts County" "South Dakota" / "Day County" "South Dakota" / "Codington County" "South Dakota" / "Marshall County" "South Dakota" / "Grant County" "South Dakota" / "Sargent County" "North Dakota" / "Richland County" "North Dakota"**

This community may also have been recorded as:

Sisseton-Wahpeton Oyate / Sisseton-Wahpeton Sioux / Lake Traverse Tribe / Sisseton-Wahpeton Dakota / Lake Traverse Reservation

Additional Resources: The following sources may provide important background information and ideas for additional search terms.

Lake Traverse Sisseton-Wahpeton Oyate website: <http://www.swo-nsn.gov/>

Wikipedia (general information only): https://en.wikipedia.org/wiki/Sisseton_Wahpeton_Oyate and https://en.wikipedia.org/wiki/Dakota_people and <https://en.wikipedia.org/wiki/Sioux>

Also see: An article about the Sisseton-Wahpeton Oyate on the Atka Lakota Museum and Cultural Center website at <http://aktalakota.stjo.org/site/News2?page=NewsArticle&id=8659> and the Minnesota Historical Society about the U.S. - Dakota War at <http://www.usdakotawar.org/>

Links to additional information (search each by tribe name):

Federal Register (recent rulings and issues): <https://www.federalregister.gov/>

Native Languages: <http://www.native-languages.org>

National Indian Law Library: <http://www.narf.org/nill/tribes/>

American Philosophical Society Indigenous Subject Guide: <https://search.amphilsoc.org/natam/search>

Library of Congress: <https://www.loc.gov/>

Bureau of Indian Affairs (BIA) Records (Record Group 75):

To focus on BIA records in the Online Catalog, use "advanced search" and enter 75 into the Record Group field.

Although important, the BIA is only one of many Federal agencies containing important records of Native Communities. For various reasons there are often periods of time where BIA records are not available for individual tribes. Other techniques should be used for these periods, such as searching by geographic area and/or time-period and widening the search to include ALL Federal agencies.

Community records could also be "buried" in BIA agency files not described in the Online Catalog in great enough detail to be searched directly by community name. Doing an advanced search using one or two words from the BIA office name or the entire office name in quotes, along with Record Group 75, may be beneficial. Some BIA offices known to hold **Lake Traverse Sisseton-Wahpeton Oyate** records follow:

1871-1903 Devil's Lake Agency, 1875-1969 Sisseton Agency, 1929-1970 Aberdeen Area Office

Standing Rock Sioux Tribe of North & South Dakota

North Dakota: Primarily Yanktonai (including the Cuthead) Western Dakota - South Dakota: Primarily Hunkpapa and Blackfoot (Sisasapa) Lakota

To hear modern Native Community names spoken aloud, see [National Indian Law Library](#).

Always consult the Native People themselves for most accurate information, either through their website or in person.

Current Community Headquarters:

Citizen Archivist Catalog Tag: **NT414a**

To find documents already tagged, copy and paste this tag into the [Advanced Online Catalog Search Form](#) in the "Tags" box. If documents are not tagged or you wish to contribute, see the [Citizen Archivist Program](#).

Personal archival assistance:

For additional help in finding records of the Standing Rock Sioux, email the archivists at the National Archives at Kansas City (kansascity.archives@nara.gov) or contact the [National Archives in Washington D.C.](#) Organizations listed on the [South Dakota Native Communities](#) page may also provide research assistance.

Searching in the [National Archives Online Catalog](#)

Slashes (/) separate individual search strings. Copy and paste or type exactly, including quotation marks if present. Also, try using a word from each of the community's other names and locations. See associated video for more detailed instructions.

Suggested Search Terms: "Standing Rock Sioux" / "Great Sioux Reservation"

Related Searches: "Sioux County" "North Dakota" / "Carson County" "South Dakota" / "Dewey County" "South Dakota" / "Ziebach County" "South Dakota"

This community may also have been recorded as: Standing Rock Sioux / Standing Rock Sioux Tribe / SRST / Great Sioux Reservation / Standing Rock Reservation

Additional Resources: The following sources may provide important background information and ideas for additional search terms.

Standing Rock Sioux website: <https://www.standingrock.org/> and <https://www.standingrock.org/content/history>

Wikipedia (general information only): https://en.wikipedia.org/wiki/Standing_Rock_Indian_Reservation and https://en.wikipedia.org/wiki/Lakota_people and <https://en.wikipedia.org/wiki/Hunkpapa> and <https://en.wikipedia.org/wiki/Sisasapa> and https://en.wikipedia.org/wiki/Dakota_people and <https://en.wikipedia.org/wiki/Sioux>

Also see: An article about the Standing Rock Sioux on the Atka Lakota Museum and Cultural Center website at <http://aktalakota.stjo.org/site/News2?page=NewsArticle&id=8660>

Links to additional information (search each by tribe name):

Federal Register (recent rulings and issues): <https://www.federalregister.gov/>

Native Languages: <http://www.native-languages.org>

National Indian Law Library: <http://www.narf.org/nill/tribes/>

American Philosophical Society Indigenous Subject Guide: <https://search.amphilsoc.org/natam/search>

Library of Congress: <https://www.loc.gov/>

Bureau of Indian Affairs (BIA) Records (Record Group 75):

To focus on BIA records in the Online Catalog, use "advanced search" and enter 75 into the Record Group field.

Although important, the BIA is only one of many Federal agencies containing important records of Native Communities. For various reasons there are often periods of time where BIA records are not available for individual tribes. Other techniques should be used for these periods, such as searching by geographic area and/or time-period and widening the search to include ALL Federal agencies.

Community records could also be "buried" in BIA agency files not described in the Online Catalog in great enough detail to be searched directly by community name. Doing an advanced search using one or two words from the BIA office name or the entire office name in quotes, along with Record Group 75, may be beneficial. Some BIA offices known to hold **Standing Rock Sioux** records follow:

1864-1974 Standing Rock Agency, 1869-1949 Cheyenne River Agency, 1929-1970 Aberdeen Area Office

Yankton Sioux Tribe of South Dakota

Yankton Nakota

To hear modern Native Community names spoken aloud, see [National Indian Law Library](#).

Always consult the Native People themselves for most accurate information, either through their website or in person.

Current Community Headquarters: [Wagner, South Dakota](#)

Citizen Archivist Catalog Tag: **NT528**

To find documents already tagged, copy and paste this tag into the [Advanced Online Catalog Search Form](#) in the "Tags" box. If documents are not tagged or you wish to contribute, see the [Citizen Archivist Program](#).

Personal archival assistance:

For additional help in finding records of the Yankton Sioux Tribe, email the archivists at the National Archives at Kansas City (kansascity.archives@nara.gov) or contact the [National Archives in Washington D.C.](#) Organizations listed on the [South Dakota Native Communities](#) page may also provide research assistance.

Searching in the [National Archives Online Catalog](#)

Slashes (/) separate individual search strings. Copy and paste or type exactly, including quotation marks if present. Also, try using a word from each of the community's other names and locations. See associated video for more detailed instructions.

Suggested Search Terms: ["Yankton Sioux"](#) / ["Yankton Reservation"](#) / ["Yankton Indian"](#)

Related Searches: ["Charles Mix County"](#) ["South Dakota"](#)

This community may also have been recorded as: [Yankton Sioux](#) / [Ihanktonwan Dakota Oyate](#) / ["People of the End Village"](#) / [Ihanktonwan Nation](#) / [Yankton Reservation](#)

Additional Resources: The following sources may provide important background information and ideas for additional search terms.

Yankton Sioux website: <https://www.yanktonsiouxtribe.net/>

Wikipedia (general information only): https://en.wikipedia.org/wiki/Yankton_Sioux_Tribe and https://en.wikipedia.org/wiki/Dakota_people and <https://en.wikipedia.org/wiki/Sioux>

Also see: An article about the Yankton Sioux on the Atka Lakota Museum and Cultural Center website at <http://aktalakota.stjo.org/site/News2?page=NewsArticle&id=8661>

Links to additional information (search each by tribe name):

Federal Register (recent rulings and issues): <https://www.federalregister.gov/>

Native Languages: <http://www.native-languages.org>

National Indian Law Library: <http://www.narf.org/nill/tribes/>

American Philosophical Society Indigenous Subject Guide: <https://search.amphilsoc.org/natam/search>

Library of Congress: <https://www.loc.gov/>

Bureau of Indian Affairs (BIA) Records (Record Group 75):

To focus on BIA records in the Online Catalog, use "advanced search" and enter 75 into the Record Group field.

Although important, the BIA is only one of many Federal agencies containing important records of Native Communities. For various reasons there are often periods of time where BIA records are not available for individual tribes. Other techniques should be used for these periods, such as searching by geographic area and/or time-period and widening the search to include ALL Federal agencies.

Community records could also be "buried" in BIA agency files not described in the Online Catalog in great enough detail to be searched directly by community name. Doing an advanced search using one or two words from the BIA office name or the entire office name in quotes, along with Record Group 75, may be beneficial. Some BIA offices known to hold **Yankton Sioux** records follow:

1878-1933 Yankton Agency, 1933-1947 Yankton Sub-Agency