



2018 Virtual Genealogy Fair Schedule



#	TIME (ET)	SESSION	PRESENTER(S)
	10 a.m.	Welcoming Remarks	David S. Ferriero Archivist of the United States of America
1	10:05 a.m.	<i>Calling all Citizen Archivists! Getting the Most Out of the National Archives Catalog</i>	Suzanne Isaacs and Meredith Doviak Community Managers for the National Archives Catalog National Archives at College Park, MD
2	11 a.m.	<i>Federal Records that Help Identify Former Slaves and Slave Owners</i>	Claire Kluskens Reference and Digital Projects Archivist National Archives in Washington, DC
3	12 p.m.	<i>All's Fair in Love and War: The Civil War Widows' Pension Files</i>	Alexandra Villaseran Processing Archives Technician National Archives in Washington, DC
4	1 p.m.	<i>How to Search for Photographs that Document Civilian Conservation Corps (CCC) Camps and Activities</i>	Kaitlyn Crain Enriquez , Archives Specialist and Kelsey Noel , Processing Archivist National Archives at College Park, MD
5	2 p.m.	<i>Tennessee Valley Authority Records: To St. Louis and Beyond!</i>	Cara Moore Lebonick Archives Technician National Archives at St. Louis
6	3 p.m.	<i>America's Military Made the Call: Hello Nurses!</i>	Anna Csar Expert Archives Technician National Archives at St. Louis
	4 p.m.	Closing Remarks	Ann Cummings Executive for Research Services



2018 Virtual Genealogy Fair



How to Search: Civilian Conservation Corps (CCC) Photographs

Skill Level: Experienced

Learn how to navigate records held in the Still Picture unit that document CCC camps and activities. This session will provide researchers with a list of series that contain CCC photographs, as well as inform researchers as to what information they should gather prior to beginning their search for CCC imagery.

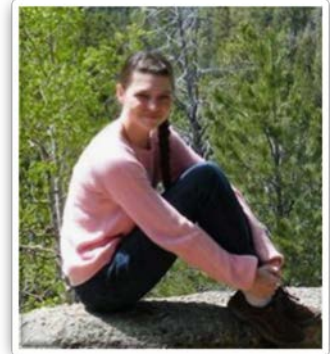
Presenter Biographies



Kaitlyn Crain Enriquez is an archives specialist with the Still Pictures Branch, where she primarily focuses on locating and retrieving public records. She holds a Bachelor of Arts in History from the University of California, Santa Cruz; and a Master of Library and Information Science from San Jose State University. She is currently pursuing a Master of Arts in Public History from Sacramento State University.



Kelsey Noel is a processing archivist in the Still Picture Branch located in College Park, MD. She began working at the National Archives in 2014, and cannot imagine ever working anywhere else. She has a Bachelor's of Art in Historic Preservation and Museum Studies from the University of Mary Washington and a Master of Science in Library and Information Science, with a concentration in Cultural Heritage Information Management, from the Catholic University of America.





Presentation Goals

- Highlight major/main photo series within Record Group 35: Records of the Civilian Conservation Corps.
- Highlight series outside of Record Group 35 that contain photographs showing Civilian Conservation Corps camps and activities.
- Provide researchers with a list of information they should have prior to beginning their search.
- Set expectations in terms of what types of CCC photographs are held in the Still Picture branch, as well as what types of photographs that the Still Picture branch does **not** hold.



Research
Services

Civilian Conservation Corps and Still Picture Holdings



- Approximately 50 Still Picture series that include CCC-related imagery.
- Images can be found in approximately 15 different record groups.
- Arrangement of records varies from series to series.
- Important to gather information prior to searching:
 - Company Number(s)
 - Camp/Project Number and Location(s)
 - Type of work completed
 - Names of federal and state agencies the CCC company worked with

Original Caption: “Santa Clara Indian Reservation, Santa Fe, New Mexico. December 2, 1940. A member of the CCC ID crew cementing the joints in a pipe line which is being built on the Santa Clara Pueblo lands for the purpose of diverting irrigation and drinking water to the pueblo lands and surrounding areas. Photo by WJ Mead.”

Photo ID: 35-G-17C-2077



Army Corps Areas

For logistical purposes, CCC camps were organized under the nine Army Corps Areas.

- Alabama – 4th Corps Area
- Arizona – 8th Corps Area
- Arkansas – 7th Corps Area
- California – 9th Corps Area
- Colorado – 8th Corps Area
- Connecticut - 1st Corps Area
- Delaware – 2nd Corps Area
- District of Columbia - 3rd Corps Area
- Florida – 4th Corps Area
- Georgia – 4th Corps Area
- Idaho – 9th Corps Area
- Illinois – 6th Corps Area
- Indiana – 5th Corps Area
- Iowa – 7th Corps Area
- Kansas – 7th Corps Area
- Kentucky - 5th Corps Area
- Louisiana – 4th Corps Area
- Maine – 1st Corps Area
- Maryland – 3rd Corps Area
- Massachusetts – 1st Corps Area
- Michigan – 6th Corps Area
- Minnesota – 7th Corps Area
- Mississippi – 4th Corps Area
- Missouri – 7th Corps Area
- Montana – 9th Corps Area
- Nebraska – 7th Corps Area
- Nevada – 9th Corps Area
- New Hampshire – 1st Corps Area
- New Jersey – 2nd Corps Area
- New Mexico – 8th Corps Area
- New York – 2nd Corps Area
- North Carolina – 4th Corps Area
- North Dakota - 7th Corps Area
- Ohio – 5th Corps Area
- Oklahoma – 8th Corps Area
- Oregon – 9th Corps Area
- Pennsylvania – 3rd Corps Area
- Rhode Island – 1st Corps Area
- South Carolina – 4th Corps Area
- South Dakota – 7th Corps Area
- Tennessee – 4th Corps Area
- Texas – 8th Corps Area
- Utah – 9th Corps Area
- Vermont – 1st Corps Area
- Virginia – 3rd Corps Area
- Washington – 9th Corps Area
- West Virginia – 5th Corps Area
- Wisconsin – 6th Corps Area
- Wyoming – 8th Corps Area
- Yellowstone National Park – 8th Corps Area



CCC Company Numbers

Each company number contains the Army Corps Area in which the company was formed. If the company number is three digits, then the first number represents the Army Corps Area. If the company number is four digits, then the second number represents the Army Corps area.

- Example: California is located in the 9th Army Corps Area. **Company 976** worked at Camp F-394 located in Mt. Shasta, CA. **Company 1913** worked at SP-37 located in Davenport, CA.
- Example: Georgia is located in the 4th Army Corps Area. **Company 459** worked at Camp SP-1 located in Jackson, GA. **Company 3430** worked at Camp F-12 located in Blue Ridge, GA.

CCC companies were segregated and company numbers reflected that issue.

- C: Colored
- V: Veterans
- X: Mixed Races
- Examples: Company 786-C (Ft. Riley, KS); Company 1862-V (Hereford, TX); Company 2430-VC (Concord, NC); Company 640-X (Drummond, WI)

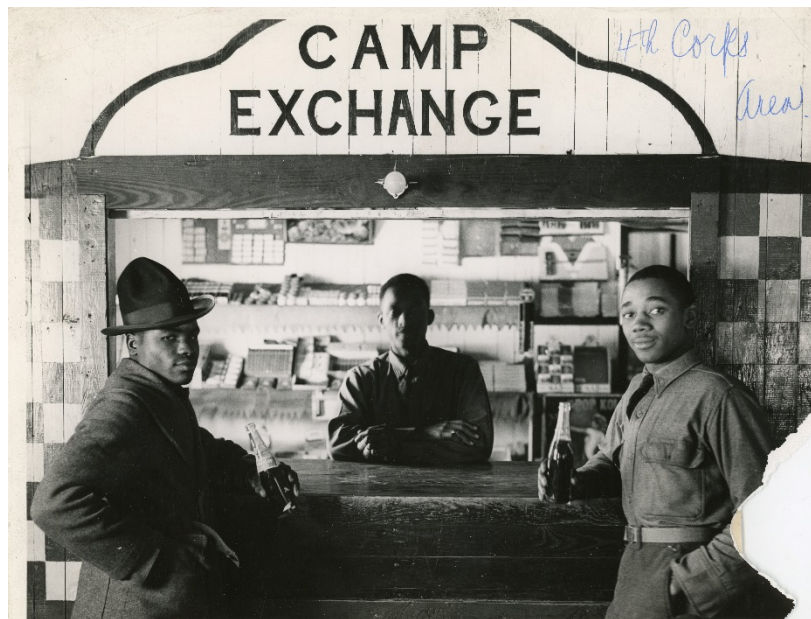


Photo ID: 35-N-17-3

Caption: “Camp Exchange, CCC Co. 5418. Witherbee, South Carolina.”



Research
Services

CCC Camp Numbers and Locations

- A – Army Military Reservations
- A – Agriculture (Bureau of Animal Industry)
- BF – Federal Game Refuge
- BS – Biological Survey
- BR – Federal Reclamation Project
- C or E – State Land (Corps of Engineers)
- CP – County Parks
- D – Private Land (Soil Conservation Service)
- DG – Public Domain (Grazing)
- DPE – Drainage Private Land Erosions
- DSP – Department of State Parks
- DPS – Department of National Parks
- DF – Department of Forestry
- F or NF – National Forest
- FWS – Fish and Wildlife Service
- G – Department of Grazing
- GF – Oregon and California Land Grant (Grazing)
- GLO – Grazing Service/Land Grant
- GNP – Grazing Service/National Park
- GNP – Glacier National Park
- MA – Municipal Area
- MC – Private Land (Mosquito Control)
- NM – National Monument
- MP – Military Park
- NA – National Arboretum (Bureau of Plant Industry)
- Navy – Naval Military Reservation
- NP – National Park
- P – Private Forest
- PE – Private Land Erosion
- S – State Forest
- SP – State Park
- SCS – Soil Conservation
- TVA – Tennessee Valley Authority
- TVA-P – Tennessee Valley Authority (State Park Division)
- SNP – Sequoia National Park
- YNP – Yellowstone National Park

List of designators original source:

http://www.ccclegacy.org/CCC_Camp_Lists.html



Photo ID: 35-N-14-2. Uncaptioned photo of African American enrollees at CCC Headquarters Camp N.P.2

Record Group 35: Records of the Civilian Conservation Corps



NATIONAL
ARCHIVES

Research Services

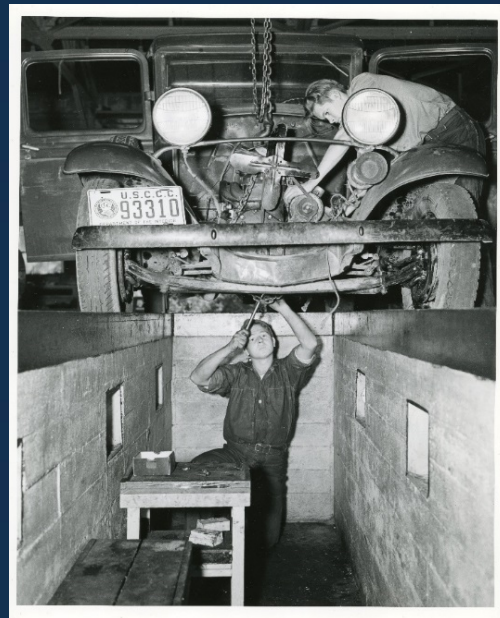


Photo ID: 35-GE-3B-3

Original Caption: "Enrollees repairing a truck. Yosemite Auto Repair Shop at Yosemite, California."

NATIONAL ARCHIVES › RESEARCH SERVICES



35-G: Photographs Taken by Wilfred J. Mead of CCC Activities



- Largest series within RG 35 materials held in Still Pictures.
- 35-G documents CCC activities and camps throughout the United States.
- Majority of the photographs were taken by W.J. Mead, though there are photographs interfiled taken by other photographers.
- Photographs are organized alphabetically by subject.
- Captions make reference to company numbers, camp numbers, and locations.
- Additional card index available in the research room, which is organized by state.

Photo ID: 35-G-2A-2870

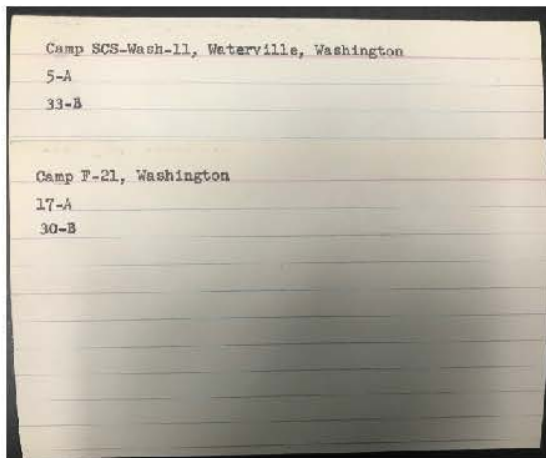
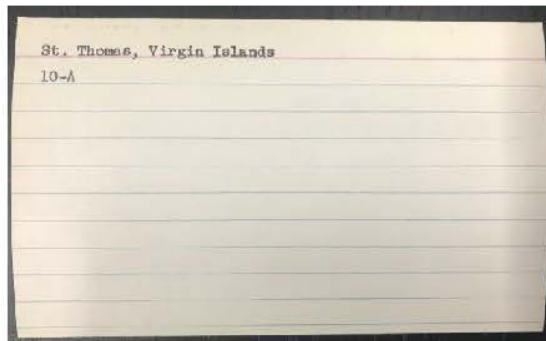
Original Caption: “SCS-VA-23, Lexington, VA. Safety – SCS – Blacksmith Shop – Sharpening Tools – Tools are sharpened and repaired in the camp blacksmith shop. Photo by W.J. Mead”



Research
Services

35-G:

Photographs Taken by Wilfred J. Mead of CCC Activities



RG 35 G
RECORDS OF THE CIVILIAN CONSERVATION CORPS
Prints and Negatives: Photographs of CCC Activities, taken by Walter J. Mead, 1937 and 1910-1912
Box Contents List: Arranged by Subject

Box-Divider	Subjects	Box-Divider	Subjects
35-G-1-A	Airplane Mechanics' Course	35-G-22-A	National Forest Service
35-G-1-B	Agriculture	35-G-23-A	National Forest Service
35-G-1-C	Alaska	35-G-23-B	National Park Service
35-G-1-D	Automotive Repair Shop	35-G-24-A	Office of Selection
35-G-2-A	Blacksmithing	35-G-25-A	Office of Selection
35-G-2-C	Bridge Construction	35-G-26-A	Office of the Director
35-G-2-D	Building Construction	35-G-26-B	Radio
35-G-3-A	Building Construction	35-G-27-A	Railroads
35-G-3-B	Camp Activities	35-G-28-A	Recreational Activities
35-G-4-A	Camp Activities	35-G-29-A	Recreational Activities
35-G-5-A	Camp Activities	35-G-29-B	Recreation
35-G-6-A	Carpentry	35-G-29-C	Recreation
35-G-6-B	Cooks and Bakers	35-G-30-A	Road Building
35-G-7-A	Cooks and Bakers	35-G-30-B	Road Building
35-G-7-B	Electrical	35-G-31-A	Rookies (See also: "Office of Selection")
35-G-7-C	Firefighting	35-G-31-B	Safety
35-G-8-A	Fish and Wildlife	35-G-32-A	Safety
35-G-9-A	Fish and Wildlife	35-G-33-A	Safety
35-G-10-A	Fish and Wildlife	35-G-33-B	Soil Conservation Service
35-G-11-A	Fish and Wildlife	35-G-34-A	Soil Conservation Service
35-G-12-A	Fish and Wildlife	35-G-35-A	Supply Depot
35-G-13-A	Fish and Wildlife	35-G-36-A	Supply Depot
35-G-14-A	Fish and Wildlife	35-G-36-B	Surveying
35-G-15-A	Fish and Wildlife	35-G-37-A	Telephone Line Construction
35-G-15-B	Floods	35-G-37-B	Training - Merchant Marine
35-G-16-A	Food	35-G-37-C	Virgin Islands
35-G-16-B	Grazing Service	35-G-38-A	Welding
35-G-16-C	Health	35-G-38-B	Woodworking
35-G-16-D	Heavy Equipment Operation	35-G-38-C	Miscellaneous and Unidentified
35-G-17-A	Heavy Equipment Operation	35-G-39-A	Activities of Negro Enrollees - Belleville, MD
35-G-17-B	Historical File	35-G-39-B	Activities of Negro Enrollees - Yanceyville, NC
35-G-17-C	Indian Service	35-G-40-A	Activities of Negro Enrollees - Yanceyville, NC
35-G-18-A	Mechanics	35-G-41-A	Activities of Negro Enrollees - Yanceyville, NC
35-G-19-A	Mechanics	35-G-41-B	Activities of Negro Enrollees - Winneton, IL
35-G-20-A	Mechanics	41-C	Activities of Negro Enrollees - Miscellaneous and Unidentified
35-G-20-B	Machinery		
35-G-20-C	Maintenance Mechanics		
35-G-21-A	National Forest Service		

35-G card index (above)

35-G index examples (middle)

35-G finding aid (far right)



Research
Services

35-G:

Photographs Taken by Wilfred J. Mead of CCC Activities



Photo ID: 35-G-10A-4351

Original Caption: “St. Thomas, Virgin Islands. Interior – CCC Operations – Virgin Islands – Road Building: CCC boys building a road up Crown Mountain on St. Thomas, Virgin Islands. Photo by National Park Service.”



Photo ID: 35-G-30B-280048

Original Caption: “Building truck trail up Quinault River. Very large stand of Douglas fir. Boys from Camp F-21, Washington. Taken by KD Swan – 1933”



Photo ID: 35-G-30B-280054

Original Caption: “Pontoon bridge across Quinault River, built by boys from Camp F-21. Only crossing chance was by boat before bridge was built. Taken by KD Swan – Washington – 1933”



Research
Services

35-G:

Photographs Taken by Wilfred J. Mead of CCC Activities

No. 493 Camp Roosevelt, F-1, Edinburgh, Va., July 22, 1940.
ROOKIES -- Fire training. A line of new CCC enrollees of Camp Roosevelt, fire fighting tools in hand, are led by one of the camp foremen, a specialist in fire fighting work, to the demonstration fire line. Photo by W. J. Mead



Photo ID: 35-G-7C-493

Original Caption: “Camp Roosevelt, F-1, Edinburgh, CA. July 22, 1940. Rookies – Fire training. A line of new CCC enrollees of Camp Roosevelt, fire fighting tools in hand, are led by one of the camp foremen, a specialist in fire fighting work, to the demonstration fire line.”

U.S. Army Corps Area Photographic File of CCC Activities



Photo ID: 35-GC-IX-779-D1

Original Caption: “CCC enrollees, Art Class, Twin Camps, Companies 1951 and 2950, Lompoc, CA.”

- Photos in 35-GC are organized according to an alphanumeric subject code.
- While the prints are organized by the alphanumeric code, there are two (partial) item-level indexes available. Those indexes are considered their own series: 35-GCX and 35-GCY
- Each photograph contains the Roman numeral of the Corps Area in which it was taken, an item number, and the alphanumeric designator under which the photograph is filed.
Example: 35-GC-IX-237-A4
- There are a few original negatives available for prints in this series. However, there is not a negative for every photo in the series.



Alphanumeric Codes

35-GC: U.S. Army Corps Area Photographic File of CCC Activities

A. Academic

1. English
2. Illiteracy
3. Mathematics
4. Penmanship
5. Science
6. Social Studies
7. Miscellaneous
8. Languages

B. Vocational

1. Agricultural
2. Barbering
3. Blacksmithing
4. Blue Printing
5. Bookkeeping
6. Welding

B. Vocational (continued)

6. Welding
7. Cooking and Baking
8. Drawing
9. Journalism
10. Carpentry
11. Mechanics
12. Photography
13. Public Speaking
14. Radio
15. Shorthand
16. Taxidermy
17. Telegraphy
18. Typewriting
19. Miscellaneous
20. Aviation

B. Vocational (continued)

21. Truck Driving
22. Sign Painting

C. Job Training

1. Erosion Control
2. Flood Control, Irrigation, and Drainage
3. Forestry (Forest Culture and Protection)
4. Landscaping and Recreation
5. Structural Improvements
6. Transportation Improvements
7. Wild Life
8. Miscellaneous Activities

... continues onto next slide



Alphanumeric Codes

35-GC: U.S. Army Corps Area Photographic File of CCC Activities

D. Informal Activities

1. Arts and Crafts
2. Dramatics
3. Sports
4. Music
5. Other Activities

E. Miscellaneous

1. First Aid and Life Saving
2. Camp Kitchens
3. Libraries
4. Health
5. Safety
6. School Buildings, Exterior
7. Work Shops
8. Exhibits, General
9. Miscellaneous

E. Miscellaneous (continued)

10. Recreation
11. Infirmaries
12. Classrooms
13. Teacher Groups
14. Enrollee Groups
15. Barracks
16. Religious Activities
17. Counseling and Guidance
18. Visual Education
19. Camps
20. Advisers' Conferences
21. Mess



Photo ID: 35-GC-II-157-E2

Original Caption: “Enrollee working in kitchen. CCC Company 1273, Camp SCS-4. Hackettstown, New Jersey.”



Research
Services

35-GCX: Shelf list to the US Army Corps Area Photographic File of CCC Activities, 1937 - 1938

CCC PICTURE CATALOGUE

B. Vocational

1. Agriculture

Description of Picture	Co. or Camp No.	Picture No.
Enrollees plowing camp garden	Camp 11061	I-15-RI
Enrollees working in garden	Co. 1183	I-24-RI
Gardening class	Co. 1160	I-59-RI
Company garden	Co. 1134	I-59-RI
Gardening class	Co. 1180	I-69-RI
Agronomy class	Co. 1288	I-78-RI
Company garden	Co. 1124	I-80-RI
Animal husbandry class	Co. 1183	I-88-RI
Camp garden	Co. 1124	I-94-RI
Members of agriculture class caponizing chicken	Co. 8218-V	II-149-RI
Product of class in swine raising	Co. 1218	III-16-RI
Poultry raised by enrollees	Co. 1512	III-16-RI
Chickens raised by camp poultry class	Co. 1598	III-88-RI
Chickens raised by camp poultry class	Co. 1869	III-88-RI
Chickens raised by camp poultry class	Co. 1538	III-70-RI
Enrollees picking vegetables	Co. 588	III-88-RI
Enrollee butchering hog raised in camp	Co. 2380	III-97-RI
Poultry project	Co. 3340-V	III-108-RI
Duck raising project	Co. 2388-C	III-104-RI
Poultry project	Co. 3340-V	III-171-RI
Chicken house	Co. 4470	IV-1-RI
Enrollees tending onion patch		IV-6-RI
Enrollees feeding chickens	Co. 483	IV-9-RI
Bee project	Co. 4472	IV-54-RI
Bee project	Co. 4472	IV-56-RI
Bee project	Co. 4472	IV-57-RI
Bee project	Co. 4472	IV-58-RI
Enrollees tending English peas patch	Co. 4455-C	IV-39-RI
Enrollees tending cabbage patch	Co. 4455-C	IV-40-RI
Advisor and enrollees studying lima bean plot	Co. 2450-G	IV-41-RI
Enrollees with captured swarms of bees	Co. 2450-C	IV-42-RI
Enrollees receiving noon meal while on the job	Camp Sanders,	IV-43-
First lima beans picked from camp garden	Co. 4428	IV-44-RI
Members of garden class in garden	Co. 1445	IV-45-RI
Colored veteran meat curing class	Co. 2441-C	IV-46-RI
Camp garden	Co. 4428	IV-47-RI
Poultry class	Co. 4427-C	IV-48-RI
Camp garden	Co. 4428	IV-49-RI
Enrollees starting camp garden	Co. 4408	IV-50-RI
Rose and verbena garden	Co. 4408	IV-51-RI
Camp garden	Co. 4408	IV-52-RI
Vegetables for market picked from camp garden	Co. 4407	IV-53-RI
Camp garden	Co. 4407	IV-54-RI
Camp garden	Co. 4407	IV-55-RI

- 35-GCX is a “shelf list” which is organized by the assigned alphanumeric subject code
- The shelf list includes a description of the photograph, the company number (or in some instances, the camp number or location), and the photo ID number.
- This shelf list **only** includes images indexed as “Agriculture” (A1 through A8) and “Vocational” (B1 through B23)
 - *B23 does not appear on the original alphanumeric list, however, B23 does show up as a code in this shelf list. B23 is code for “Vocational – National Defense Training”
- 35-GCX is considered its own series and must be requested in addition to 35-GC



Research
Services

35-GCX/35-GC:

U.S. Army Corps Area Photographic File of CCC Activities

35-GCX “shelf list” (right)

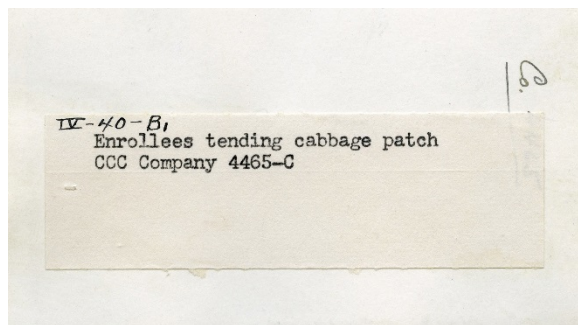
Bee project	Co. 4472	IV-54-B1
Bee project	Co. 4472	IV-56-B1
Bee project	Co. 4472	IV-57-B1
Bee project	Co. 4472	IV-58-B1
Enrollees tending English peas patch	Co. 4465-C	IV-59-B1
Enrollees tending cabbage patch	Co. 4465-C	IV-40-B1
Adviser and enrollee studying lima bean plot	Co. 2450-C	IV-41-B1
Enrollees with captured swarm of bees	Co. 2450-C	IV-42-B1



No. 2 Cabbage

Photo ID (left): 35-GC-IV-40-B1

Original Caption / Back of Print (left): “Enrollees tending cabbage patch CCC Company 4465-C”



IV-40-B1
Enrollees tending cabbage patch
CCC Company 4465-C



Bee Project

Photo ID (right):
35-GC-IV-37-B1

Original Caption (right): “Bee Project, CCC Company 4472, Newberry, South Carolina”



Research Services

35-GCY: Index to US Army Corps Area Photographic File of CCC Activities

- 35-GCY is an index that is organized by Army Corps Area.
- This index is far more complete compared to the 35-GCX shelf list.
- Like 35-GCX, 35-GCY includes a description of the photo, the company (or camp) number, and a photo ID number.
- 35-GCY is also its own series and must be requested.

Seventh Corps Area - 15

Description of Picture	Co. or Camp No.	Picture No.
Enrollees at work in woodworking shop	Co. 1768	VII-645-210
Ideal surveying class	Co. 3738	VII-645-09
Tree planting crew resting	Co. 3735	VII-644-214
" " " "	" " "	VII-645-214
CCC enrollees quarrying rock	Co. 1718	VII-646-01
Enrollees laying a walk	Co. 3797	VII-647-04
Enrollees on the job - surveying	Co. 3774-F	VII-646-09
Auto mechanics class	Co. 3729	VII-646-211
New enrollees receiving clothing issue	Co. 2750	VII-650-214
Editor of camp paper typing in office	Co. 705	VII-651-218
Enrollees learning how to refinish furniture	Co. 3710	VII-652-210
Enrollees working on project in stone work	Co. 1770	VII-653-08
Enrollees playing ball in the field	Co. 3749-C	VII-654-26
Enrollees playing football	Co. 3749-C	VII-655-35
Dredging unloading logs from barge	Co. 3792	VII-656-08
Enrollees at retreat	Co. 3769-C	VII-657-225
Class in business administration	Co. 3710	VII-658-219
Enrollees working on engine of truck	Co. 3749-C	VII-659-211
Enrollees constructing tool box	Co. 3749-C	VII-660-210
Mechanics class	Co. 3749-C	VII-661-211
Class in truck maintenance	Co. 2734	VII-662-211
Double stone latrine on Old Lake picnic area	SP-10-Iowa	VII-663-29
Proposed location for large shelter	SP-10-Iowa	VII-664-29
Double stone latrine on Old Lake picnic area	SP-10-Iowa	VII-665-29
" " " "	" " "	VII-666-29
" " " "	" " "	VII-667-29
" " " "	" " "	VII-668-29
Heavy built insulator	" " "	VII-669-29
Trail steps from top of dam to top of hill	" " "	VII-670-29
Enrollees working on road	Co. 3729	VII-671-01
Auto mechanics class	Co. 1718	VII-672-211
Enrollees busy on soil erosion work	Co. 3729	VII-673-01
Enrollees constructing road	" " "	VII-674-01
Enrollees working on lake improvement	" " "	VII-675-01
" " " "	" " "	VII-676-01
" " " "	" " "	VII-677-01
Enrollees working on shelter house	SP-5-Iowa	VII-678-05
Enrollees pouring concrete ring of stone arch bridge	" " "	VII-679-05
" " " " " " " "	" " "	VII-680-05
" " " " " " " "	" " "	VII-681-05
" " " " " " " "	" " "	VII-682-05
" " " " " " " "	" " "	VII-683-05
" " " " " " " "	" " "	VII-684-05
" " " " " " " "	" " "	VII-685-05
" " " " " " " "	" " "	VII-686-05
" " " " " " " "	" " "	VII-687-05
" " " " " " " "	" " "	VII-688-05
" " " " " " " "	" " "	VII-689-05
" " " " " " " "	" " "	VII-690-05
" " " " " " " "	" " "	VII-691-05
" " " " " " " "	" " "	VII-692-05
" " " " " " " "	" " "	VII-693-05
" " " " " " " "	" " "	VII-694-05
" " " " " " " "	" " "	VII-695-05
" " " " " " " "	" " "	VII-696-05
" " " " " " " "	" " "	VII-697-05
" " " " " " " "	" " "	VII-698-05
" " " " " " " "	" " "	VII-699-05
" " " " " " " "	" " "	VII-700-05
" " " " " " " "	" " "	VII-701-05
" " " " " " " "	" " "	VII-702-05
" " " " " " " "	" " "	VII-703-05
" " " " " " " "	" " "	VII-704-05
" " " " " " " "	" " "	VII-705-05
" " " " " " " "	" " "	VII-706-05
" " " " " " " "	" " "	VII-707-05
" " " " " " " "	" " "	VII-708-05
" " " " " " " "	" " "	VII-709-05
" " " " " " " "	" " "	VII-710-05
" " " " " " " "	" " "	VII-711-05
" " " " " " " "	" " "	VII-712-05
" " " " " " " "	" " "	VII-713-05
" " " " " " " "	" " "	VII-714-05
" " " " " " " "	" " "	VII-715-05
" " " " " " " "	" " "	VII-716-05
" " " " " " " "	" " "	VII-717-05
" " " " " " " "	" " "	VII-718-05
" " " " " " " "	" " "	VII-719-05
" " " " " " " "	" " "	VII-720-05
" " " " " " " "	" " "	VII-721-05
" " " " " " " "	" " "	VII-722-05
" " " " " " " "	" " "	VII-723-05
" " " " " " " "	" " "	VII-724-05
" " " " " " " "	" " "	VII-725-05
" " " " " " " "	" " "	VII-726-05
" " " " " " " "	" " "	VII-727-05
" " " " " " " "	" " "	VII-728-05
" " " " " " " "	" " "	VII-729-05
" " " " " " " "	" " "	VII-730-05
" " " " " " " "	" " "	VII-731-05
" " " " " " " "	" " "	VII-732-05
" " " " " " " "	" " "	VII-733-05
" " " " " " " "	" " "	VII-734-05
" " " " " " " "	" " "	VII-735-05
" " " " " " " "	" " "	VII-736-05
" " " " " " " "	" " "	VII-737-05
" " " " " " " "	" " "	VII-738-05
" " " " " " " "	" " "	VII-739-05
" " " " " " " "	" " "	VII-740-05
" " " " " " " "	" " "	VII-741-05
" " " " " " " "	" " "	VII-742-05
" " " " " " " "	" " "	VII-743-05
" " " " " " " "	" " "	VII-744-05
" " " " " " " "	" " "	VII-745-05
" " " " " " " "	" " "	VII-746-05
" " " " " " " "	" " "	VII-747-05
" " " " " " " "	" " "	VII-748-05
" " " " " " " "	" " "	VII-749-05
" " " " " " " "	" " "	VII-750-05
" " " " " " " "	" " "	VII-751-05
" " " " " " " "	" " "	VII-752-05
" " " " " " " "	" " "	VII-753-05
" " " " " " " "	" " "	VII-754-05
" " " " " " " "	" " "	VII-755-05
" " " " " " " "	" " "	VII-756-05
" " " " " " " "	" " "	VII-757-05
" " " " " " " "	" " "	VII-758-05
" " " " " " " "	" " "	VII-759-05
" " " " " " " "	" " "	VII-760-05
" " " " " " " "	" " "	VII-761-05
" " " " " " " "	" " "	VII-762-05
" " " " " " " "	" " "	VII-763-05
" " " " " " " "	" " "	VII-764-05
" " " " " " " "	" " "	VII-765-05
" " " " " " " "	" " "	VII-766-05
" " " " " " " "	" " "	VII-767-05
" " " " " " " "	" " "	VII-768-05
" " " " " " " "	" " "	VII-769-05
" " " " " " " "	" " "	VII-770-05
" " " " " " " "	" " "	VII-771-05
" " " " " " " "	" " "	VII-772-05
" " " " " " " "	" " "	VII-773-05
" " " " " " " "	" " "	VII-774-05
" " " " " " " "	" " "	VII-775-05
" " " " " " " "	" " "	VII-776-05
" " " " " " " "	" " "	VII-777-05
" " " " " " " "	" " "	VII-778-05
" " " " " " " "	" " "	VII-779-05
" " " " " " " "	" " "	VII-780-05
" " " " " " " "	" " "	VII-781-05
" " " " " " " "	" " "	VII-782-05
" " " " " " " "	" " "	VII-783-05
" " " " " " " "	" " "	VII-784-05
" " " " " " " "	" " "	VII-785-05
" " " " " " " "	" " "	VII-786-05
" " " " " " " "	" " "	VII-787-05
" " " " " " " "	" " "	VII-788-05
" " " " " " " "	" " "	VII-789-05
" " " " " " " "	" " "	VII-790-05
" " " " " " " "	" " "	VII-791-05
" " " " " " " "	" " "	VII-792-05
" " " " " " " "	" " "	VII-793-05
" " " " " " " "	" " "	VII-794-05
" " " " " " " "	" " "	VII-795-05
" " " " " " " "	" " "	VII-796-05
" " " " " " " "	" " "	VII-797-05
" " " " " " " "	" " "	VII-798-05
" " " " " " " "	" " "	VII-799-05
" " " " " " " "	" " "	VII-800-05
" " " " " " " "	" " "	VII-801-05
" " " " " " " "	" " "	VII-802-05
" " " " " " " "	" " "	VII-803-05
" " " " " " " "	" " "	VII-804-05
" " " " " " " "	" " "	VII-805-05
" " " " " " " "	" " "	VII-806-05
" " " " " " " "	" " "	VII-807-05
" " " " " " " "	" " "	VII-808-05
" " " " " " " "	" " "	VII-809-05
" " " " " " " "	" " "	VII-810-05
" " " " " " " "	" " "	VII-811-05
" " " " " " " "	" " "	VII-812-05
" " " " " " " "	" " "	VII-813-05
" " " " " " " "	" " "	VII-814-05
" " " " " " " "	" " "	VII-815-05
" " " " " " " "	" " "	VII-816-05
" " " " " " " "	" " "	VII-817-05
" " " " " " " "	" " "	VII-818-05
" " " " " " " "	" " "	VII-819-05
" " " " " " " "	" " "	VII-820-05
" " " " " " " "	" " "	VII-821-05
" " " " " " " "	" " "	VII-822-05
" " " " " " " "	" " "	VII-823-05
" " " " " " " "	" " "	VII-824-05
" " " " " " " "	" " "	VII-825-05
" " " " " " " "	" " "	VII-826-05
" " " " " " " "	" " "	VII-827-05
" " " " " " " "	" " "	VII-828-05
" " " " " " " "	" " "	VII-829-05
" " " " " " " "	" " "	VII-830-05
" " " " " " " "	" " "	VII-831-05
" " " " " " " "	" " "	VII-832-05
" " " " " " " "	" " "	VII-833-05
" " " " " " " "	" " "	VII-834-05
" " " " " " " "	" " "	VII-835-05
" " " " " " " "	" " "	VII-836-05
" " " " " " " "	" " "	VII-837-05
" " " " " " " "	" " "	VII-838-05
" " " " " " " "	" " "	VII-839-05
" " " " " " " "	" " "	VII-840-05
" " " " " " " "	" " "	VII-841-05
" " " " " " " "	" " "	VII-842-05
" " " " " " " "	" " "	VII-843-05
" " " " " " " "	" " "	VII-844-05
" " " " " " " "	" " "	VII-845-05
" " " " " " " "	" " "	VII-846-05
" " " " " " " "	" " "	VII-847-05
" " " " " " " "	" " "	VII-848-05
" " " " " " " "	" " "	VII-849-05
" " " " " " " "	" " "	VII-850-05
" " " " " " " "	" " "	VII-851-05
" " " " " " " "	" " "	VII-852-05
" " " " " " " "	" " "	VII-853-05
" " " " " " " "	" " "	VII-854-05
" " " " " " " "	" " "	VII-855-05
" " " " " " " "	" " "	VII-856-05
" " " " " " " "	" " "	VII-857-05
" " " " " " " "	" " "	VII-858-05
" " " " " " " "	" " "	VII-859-05
" " " " " " " "	" " "	VII-860-05
" " " " " " " "	" " "	VII-861-05
" " " " " " " "	" " "	VII-862-05
" " " " " " " "	" " "	VII-863-05
" " " " " " " "	" " "	VII-864-05
" " " " " " " "	" " "	VII-865-05
" " " " " " " "	" " "	VII-866-05
" " " " " " " "	" " "	VII-867-05
" " " " " " " "	" " "	VII-868-05
" " " " " " " "	" " "	VII-869-05
" " " " " " " "	" " "	VII-870-05
" " " " " " " "	" " "	VII-871-05
" " " " " " " "	" " "	VII-872-05
" " " " " " " "	" " "	VII-873-05
" " " " " " " "	" " "	VII-874-05
" " " " " " " "	" " "	VII-875-05
" " " " " " " "	" " "	VII-876-05
" " " " " " " "	" " "	VII-877-05
" " " " " " " "	" " "	VII-878-05
" " " " " " " "	" " "	VII-879-05
" " " " " " " "	" " "	VII-880-05
" " " " " " " "	" " "	VII-881-05
" " " " " " " "	" " "	VII-882-05
" " " " " " " "	" " "	VII-883-05
" " " " " " " "	" " "	VII-884-05
" " " " " " " "	" " "	VII-885-05
" " " " " " " "	" " "	VII-886-05
" " " " " " " "	" " "	VII-887-05
" " " " " " " "	" " "	VII-888-05
" " " " " " " "	" " "	VII-889-05
" " " " " " " "	" " "	VII-890-05
" " " " " " " "	" " "	VII-891-05
" " " " " " " "	" " "	VII-892-05
" " " " " " " "	" " "	VII-893-05
" " " " " " " "	" " "	VII-894-05
" " " " " " " "	" " "	VII-895-05
" " " " " " " "	" " "	VII-896-05
" " " " " " " "	" " "	VII-897-05
" " " " " " " "	" " "	VII-898-05
" " " " " " " "	" " "	VII-899-05
" " " " " " " "	" " "	VII-900-05
" " " " " " " "	" " "	VII-901-05
" " " " " " " "	" " "	VII-902-05
" " " " " " " "	" " "	VII-903-05
" " " " " " " "	" " "	VII-904-05
" " " " " " " "	" " "	VII-905-05
" " " " " " " "	" " "	VII-906-05
" " " " " " " "	" " "	VII-907-05
" " " " " " " "	" " "	VII-908-05
" " " " " " " "	" " "	VII-909-05
" " " " " " " "	" " "	VII-910-05
" " " " " " " "	" " "	VII-911-05
" " " " " " " "	" " "	VII-912-05
" " " " " " " "	" " "	VII-913-05
" " " " " " " "	" " "	VII-914-05
" " " " " " " "	" " "	VII-915-05
" " " " " " " "	" " "	VII-916-05
" " " " " " " "	" " "	VII-917-05
" " " " " " " "	" " "	VII-918-05
" " " " " " " "	" " "	VII-919-05
" " " " " " " "	" " "	VII-920-05
" " " " " " " "	" " "	VII-921-05
" " " " " " " "	" " "	VII-922-05
" " " " " " " "	" " "	VII-923-05
" " " " " " " "	" " "	VII-924-05
" " " " " " " "	" " "	VII-925-05
" " " " " " " "	" " "	VII-926-05
" " " " " " " "	" " "	VII-927-05
" " " " " " " "	" " "	VII-928-05
" " " " " " " "	" " "	VII-929-05
" " " " " " " "	" " "	VII-930-05
" " " " " " " "	" " "	VII-931-05
" " " " " " " "	" " "	VII-932-05
" " " " " " " "	" " "	VII-933-05
" " " " " " " "	" " "	VII-934-05
" " " " " " " "	" " "	VII-935-05
" " " " " " " "	" " "	VII-936-05
" " " " " " " "	" " "	VII-937-05
" " " " " " " "	" " "	VII-938-05
" " " " " " " "	" " "	VII-939-05
" " " " " " " "	" " "	VII-940-05
" " " " " " " "	" " "	VII-941-05
" " " " " " " "	" " "	VII-942-05
" " " " " " " "	" " "	VII-943-05
" " " " " " " "	" " "	VII-944-05
" " " " " " " "	" " "	VII-945-05
" " " " " " " "	" " "	VII-946-05
" " " " " " " "	" " "	VII-947-05
" " " " " " " "	" " "	VII-948-05
" " " " " " " "	" " "	VII-949-05
" " " " " " " "	" " "	VII-950-05
" " " " " " " "	" " "	VII-951-05
" " " " " " " "	" " "	VII-952-05
" " " " " " " "	" " "	VII-953-05
" " " " " " " "	" " "	VII-954-05
" " " " " " " "	" " "	VII-955-05
" " " " " " " "	" " "	VII-956-05
" " " " " " " "	" " "	VII-957-05
" " " " " " " "	" " "	VII-958-05
" " " " " " " "	" " "	VII-959-05
" " " " " " " "	" " "	VII-960-05
" " " " " " " "	" " "	VII-961-05
" " " " " " " "	" " "	VII-962-05
" " " " " " " "	" " "	VII-963-05
" " " " " " " "	" " "	VII-964-05
" " " " " " " "	" " "	VII-965-05
" " " " " " " "	" " "	VII-966-05
" " " " " " " "	" " "	VII-967-05
" " " " " " " "	" " "	VII-968-05
" " " " " " " "	" " "	VII-969-05
" " " " " " " "	" " "	VII-970-05
" " " " " " " "	" " "	VII-971-05
" " " " " " " "	" " "	VII-972-05
" " " " " " " "	" " "	VII-973-05
" " " " " " " "	" " "	VII-974-05
" " " " " " " "	" " "	VII-975-05
" " " " " " " "	" " "	VII-976-05
" " " " " " " "	" " "	VII-977-05
" " " " " " " "	" " "	VII-978-05
" " " " " " " "	" " "	VII-979-05
" "		

U.S. Army Corps Area Photographic File of CCC Activities

Class in Placer Mining
Class in Surveying

Co. 591	IX-640-C8
Co. 1987	IX-641-C8



Photo ID: 35-GC-IX-640-C8

Original Caption: "Headquarters Ninth Corps Area. Class in placer mining (20 miles from camp). Company 591 F-42; Superior, Montana. June 1943. Negative loaned by LY Leonard, Company 1998 F-52"



Photo ID: 35-GC-641-C8

Original Caption:
 "Headquarters Ninth Corps Area
 Surveying Class
 Company 1987; Springville, California
 Loaned by Co. 1987.
 Fresno Dist.

Card Catalogue (IX-641-C8)

Headquarters Ninth Corps Area

Surveying Class
 Company 1987; Springville, California

Loaned by Co. 1987.
 Fresno Dist.

Back of print for 35-GC-641-C8, includes original caption (left)

35-GCY index (above, far left)



35-N: Photographs of African-American Enrollees

- This series of black-and-white photographs showing African-American enrollees was accumulated by the Division of Planning and Public Relations.
- Contains photographs taken in Alabama, Arkansas, Florida, Georgia, Illinois, Kansas, Maryland, Mississippi, Missouri, New Jersey, New York, Pennsylvania, South Carolina, Tennessee, and Virginia
- 35-N is organized alphabetically by state, followed by unknown locations.

Photo ID (right): 35-N-21-15

Original Caption: “World War Veterans in CCC Camp. CCC enrollees, Yorktown, Virginia, have a glee club. The young women live nearby and meet them at the church around the corner from the camp where there is a good piano. This glee club is very popular. Mr. Brown, the educational adviser of CCC camp for Veterans is standing at the far right. His assistant is in the dark suit at left.”



35-NC: Photographic Negatives of CCC Activities in Army Corps Areas



- There are no negatives for Corps Areas II, V, and most of IX.
- 35-NC is stored in the cold vault and must acclimate for 2.5 hours prior to being served in the research room.
- Negatives are organized numerically by Army Corps Area and thereunder numerically by agency assigned number.
- The alphabetical code included in the photo ID number indicates what type of activity is shown in the photograph. Example: A1 = Aeronautics

Photo ID: 35-NC-I-48-A1

Original Caption: "Airplane mechanics. Co. 1174."



35-NC: Photographic Negatives of CCC Activities in Army Corps Areas

Alphabetical Code Used for 35-NC:

- A. Library
- B. Arts and Crafts
- C. Auto Mechanics
- D. Instruction on the Job
- E. Agriculture
- F. Photography
- G. Radio
- H. Work Shops, General
- I. Mimeographing
- J. Typewriting
- K. Blacksmithing
- L. Dramatics
- M. Mathematics' Classes

- N. Welding
- O. Bookkeeping Classes
- P. Sports
- Q. Camp Buildings
- R. Classes, General
- S. Camp Improvement
- T. Animals
- U. Mechanics, General
- V. Drafting Classes
- W. Music
- X. Journalism
- Y. Screen Process Painting
- Z. First Aid

- A1. Aeronautics
- B1. Surveying
- C1. Enrollees on the Job
- D1. Recreation, General
- E1. Exhibits, General
- F1. Mess
- G1. Life Guard Training
- H1. Taxidermy
- I1. Barber Shop
- J1. Camp Kitchen
- K1. Camp Infirmary
- L1. Timber
- M1. Sign Painting
- N1. Physical Education
- Q1. Miscellaneous



Research Services

35-NCX:

Shelflist to Photographic Negatives of CCC Activities in Army Corps Areas

- 35-NCX is an agency-produced photo list. The photographs are organized by the Army Corps area in which the images were taken.
- 35-NCX needs to be requested in addition to 35-NC
- Caption lists include brief caption, company or camp number, and a notation for how many prints were received.
- While there are no negatives for Army Corps areas 2, 5, and 9, 35-NCX does have captions for those areas. *Prints may be found elsewhere.

FIGURES OF CCC ACTIVITIES

Fourth Corps Area

Subject	Company or Camp Number	Picture Number	No. Prints Received
Class in telegraphy	Camp Beauregard	IV-1-B	5
Class in bookkeeping	Co. 469	IV-2-C	5
Class in bookkeeping	Co. 469	IV-3-C	5
4' by 8' sign near main entrance to camp	Co. 6408	IV-4-B	5
Negro enrollees gardening	Co. 6409	IV-5-B	5
Negro enrollees tying turnip greens in bundles for market	Co. 5489	IV-6-B	1
Negro enrollees gardening	Co. 5490	IV-7-B	4
Woodworking class	Co. 474	IV-8-B	5
Enrollees being instructed on iron construction by S.C.S. Foreman	Co. 6480	IV-9-B	5
Enrollees setting out 150 rose bushes in garden near entrance of camp	Camp Beauregard	IV-10-B	5
Class in first grade arithmetic	Camp Beauregard	IV-11-M	5
Class in agronomy	Camp Beauregard	IV-12-E	5
Class in auto mechanics	Camp Beauregard	IV-13-C	5
Class in forestry	Camp Beauregard	IV-14-R	5
Class in touch-typewriting	Co. 4412	IV-15-J	5
Class in auto mechanics	Co. 4412	IV-15-C	5
Class in agriculture	Co. 4412	IV-17-B	5
Library	Co. 4412	IV-18-A	5
Class in elementary arithmetic	Camp Beauregard	IV-19-M	5
Surveying class in field	Co. 489	IV-20-B1	5
Class in auto mechanics	Co. 489	IV-21-C	5
Ornamental gateway constructed by enrollees in messery class	Co. 469	IV-22-G	5
Surveying class at field laboratory	Co. 469	IV-22-B1	5
Pool, maintained by class in biology and zoology	Co. 469	IV-24-F	5
Reading room	Co. 5497	IV-25-A	5
Camp work shop	Co. 5497	IV-26-H	5
Carpentry class	Co. 5493	IV-27-B	5
Work shop - this building was erected by enrollees in their leisure time	Fort McClellan, Alabama	IV-28-C	5

FIGURES OF CCC ACTIVITIES

Fifth Corps Area

Subject	Company or Camp Number	Picture Number	No. Prints Received
Enrollees at a dance	Columbus, Ky.	V-1-D5	2*
Typewriting class	Angola, Ind.	V-2-F	2*
Enrollees taking exercise in the open	Ft. Knox, Ky.	V-3-H1	2*
Class in seranautics	Martinsville, Indiana	V-4-A1	2*
Basketweaving class	Martinsville, Indiana	V-5-B	2*
An enrollee painting	Mitchell, Ind.	V-6-D	2*
Class in first aid	Mitchell, Ind.	V-7-E	2*
Residency class	Martinsville, Indiana	V-8-H1	2*
Enrollees on the job	Angola, Ind.	V-9-G1	2*
Enrollees' sleeping quarters	Madaryville, Indiana	V-10-G	2*
Class in seranautics	Martinsville, Indiana	V-11-A1	2*

* Negatives were not received

35-NCX photo list (right and far right)

Photographic Negatives of CCC Activities in Army Corps Areas

35-NCX photo list (below)

Negro enrollees tying turnip greens in bundles for market	Co. 3499	IV-6-E
Negro enrollees gardening	Co. 3499	IV-7-E
Woodworking class	Co. 474	IV-8-B
Enrollees being instructed on dam construction by S.C.S. foreman	Co. 4490	IV-9-D



Photo ID (above): 35-NC-IV-6-E (Company 3499)

Original Caption: “Negro enrollees tying turnip greens in bundles for market”

Photo ID (left): 35-NC-IV-9-D (Company 4490)

Original Caption: “Enrollees being instructed on dam construction by S.C.S. foreman”



35-K: Photographs of CCC Activities

- Only includes photographs of CCC activities in Idaho, Oregon and Washington.
- Color photography.
- Includes 188 35mm slides. Only 81 images have captions. The other 107 images do not have any caption information.
- Photographs are assumed to have been taken by Wilfred J. Mead.



Photo ID: 35-K-461

Uncaptioned color photograph of an African American CCC enrollee.



Research
Services

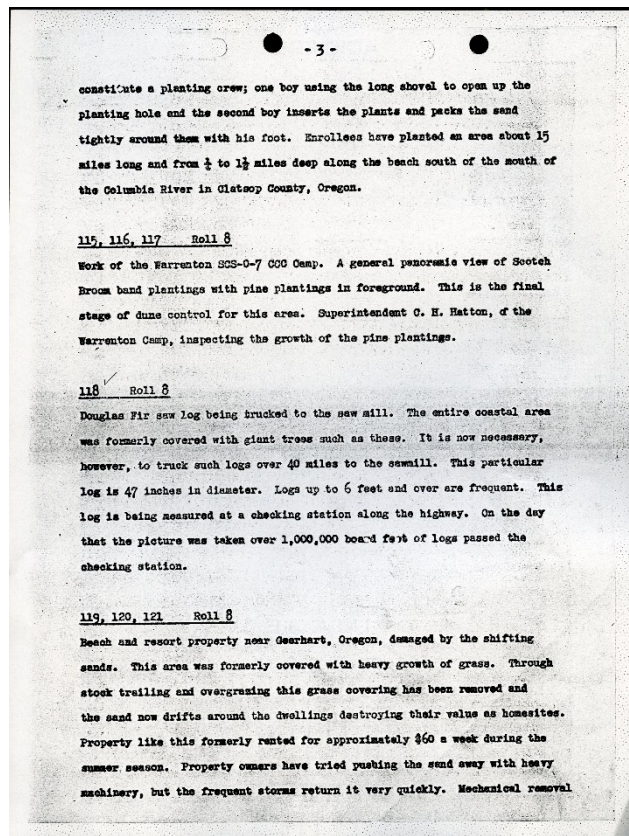
35-KX: Caption Lists to Photographs of CCC Activities

The captions in 35-KX pertain to images that do not have a letter prefix as part of the item number. Example: 35-K-202



Photo ID: 35-K-118

Original Caption: See 35-KX caption list page 3
(pictured right)





Research Services

35-KY: Captions Lists to Photographs of CCC Activities: "Victor's Captions"

35-KY pertains to items that have an "H" (no caption), "I"(Idaho), "O"(Oregon), or "W"(Washington) designator. Example: 35-KI-6; 35-KO-105; and 35-KW-96.

Use - 35-K - place (state letter) and sub #

VICTOR'S CAPTIONS, By Mead

35-KY-6

W-6 ✓ Enrollees working on Bellingham Nursery, hand weeding seedlings (Douglas Fir)

W-4 ✓ Enrollee cultivating pine seedlings - overhead sprinkling system and Nursery buildings in background. Enrollees assigned certain parts of Nursery for their care. They become familiar with the names, uses of trees and shrubs.

W-49 ✓ Masonry dam constructed by CCC enrollees of Camp W-11, Waterville, Washington. Constructed at outlet of ditch at property line. Belongs with gully with farmer mowing.

W-7 ✓ Preparing to construct brush riprap along Wynoochee River. Stream bank has been sloped by power shovels. CCC's in foreground are finishing the sloping, in distance other enrollees driving stakes to hold mat. On extreme left they are laying brush. Closeup of operations shown in upper left of above. After bank sloped live stakes of willow drawn into ground and a galvanized cable laid lengthwise of the bank against their upper side. A tie wire is placed around this cable and stretched temporarily to top of this post. Live willows then laid in thin layer at lower edge of riprap with butts in water well below low water mark. Many willows will grow. In background CCC's beginning to place conifer brush used as main body of mat. This brush placed top end down the bank and is pushed into place a piece at a time.

W-20 ✓ Brush mat along Wynoochee River nearing completion. All of the conifer brush has been placed and CCC's in foreground using a special tool to tightly twist tie wires around the poles placed lengthwise of the mat. These poles then tied securely to stakes and effect is that of a mattress of conifer brush covering exposed face of stream bank. A fascine is placed at lower edge of mat to prevent undercutting. This is heavily weighted with concrete blocks and is made by securely tying willow brush around several pieces of discarded logging cable or completed riprap. In distance may be seen concrete blocks placed on mat as an additional means of holding it in place during high water. Wynoochee River is subject to heavy floods each year from heavy rains and melting snows. It frequently overtops its banks and spreads over the entire valley floor. During these periods of flood hundreds of acres of valuable farmland are destroyed. Willow cuttings are planted through the mats at the proper season and these, together with willow growth, placed at the bottom of mat, form permanent protection to the bank. After mat is completed, planted area fenced to prevent damage to livestock. This is an area of over 100 in. of rainfall, willows making a surprising growth in a very short time.

35-KH-8 NO CAPTION



Photo ID: 35-KW-20

Original Caption: See 35-KX "Victor's Captions" (pictured left)

You Will **Not** Find....



Photo ID: 35-N-9-1

Original Caption: “Class in first aid. CCC Company 4425,
Meridian, Mississippi.”

- A name/personality index for images in Record Group 35
- Individual portraits of enrollees
- Files/information on CCC enrollees
- Individuals identified by name in the captions

Searching Outside and Beyond

Record Group 35



NATIONAL
ARCHIVES

Research Services



Photo ID: 95-GP-351-282701

Original Caption: "Shasta National Forest. Camp Mascots, Castella Camp F 7. Photo by: Paul J. Fair. July 1933"

NATIONAL ARCHIVES · RESEARCH SERVICES



Where else can I find CCC Photos?

- 8-DDR (512744)
- 12-CCC (512749)
- 12-CLA (512750)
- 12-CLM (512751)
- 49-WLM (516468)
- 54-FSR (516520)
- 55-FRP (516572)
- 69-N (518261)
- 69-PS (518282)
- 69-SFA (518795)
- 75-N (519152)
- 75-RA (519180)
- 79-CCC (520058)
- 79-ML (520097)
- 79-NP (520099)
- 79-SP (520200)
- 79-TR (520207)
- 83-G (521048)
- 95-GRA (523034)
- 95-GP (651890)
- 95-U (523045)
- 95-VNF (523047)
- 111-RF (649219)
- 111-SC (530707)
- 114-B (531513)
- 114-CS (5608107)
- 114-CT (531517)
- 114-DL (531518)
- 114-KS (5700801)
- 114-KSS (index to 114-KS; 5701165)
- 114-P (531530)
- 115-C (531542)
- 115-CP (531543)
- 115-P (532047)
- 119-CAL (532065)
- 121-Card Index Files
- 142-H (532624)
- 210-G (536000)
- 306-PS (541937)

Descriptions for the series, listed on this slide, can be found in the National Archives and Records Administration (NARA) catalog by searching the National Archives Identifier Number (number in parenthesis)



Research
Services

Example

114-B: Photographs of Civilian Conservation Corps Activities and Projects, 1936–1940



Photo ID: 114-B-NEB-1134

Original Caption: “All aboard
for field work at a CCC camp.
Loading each truck supervised
by a leader. Weeping Water CCC
Camp, Nebraska. June 29, 1940.
Photo by: Hufnagle”



Research
Services

Example

79-CCC: Photographs of Emergency Conservation Work Projects, 1933–1937

Photo ID: 79-CCC-9-1001

Uncaptioned photograph showing
CCC enrollees removing snow in
Washington, DC.





Research
Services

Example 12-CCC: CCC Educational Activities, 1940–1940



Photo ID: 12-CCC-416-1

Original Caption: “Drafting work
– Company 416. Lanier, GA”



Where else can I find CCC Photos?

Searchable Online

- 95-GP

In the Research Room

- 8-DDR
- 79-TR
- 115-C and 115-CP

Honorable Mention

- 83-G
- 121-Card Index Files
- 119-CAL
- 210-G



95-GP: What You'll Find

- Fully digitized and available in the National Archives Catalog
- CCC photographs make up a small portion of the images in this series
- Captions were digitized but not transcribed



95-GP: The NARA Catalog

Photographs Relating to National Forests, Resource Management Practices, Personnel, and Cultural and Economic History, ca. 1897 – ca. 1980

This series has been digitized and is now fully available online. Hyperlinks to digital images are found below in the Details section.

Additional Information About this Series

National Archives Identifier: 651890

Local Identifier: 95-GP

Creator(s): Department of Agriculture, Forest Service, 7/1/2003 - (Most Recent)
Department of Agriculture, Bureau of Forestry, 7/1/1903-7/1/1903 (Predecessor)

Form: Record Group 501 Records of the Forest Service, 1870 - 2009

Details

Level of Description: Series

Type(s) of Archival Material: Photographs and other Graphic Materials

The creator compiled or maintained the series between: ca. 1897 - ca. 1980

Includes: 61112 item(s) described in the catalog. [Search within this series.](#)

Function and Use: The Forest Service maintained these photographs as a historical record of the agency's activities in the management and protection of national forests and grasslands for multiple purposes, including fire recreation, conservation and protection of wildlife, forest-based economic development, and the protection of cultural and heritage resources. The images were used in publications, presentations, and studies to demonstrate the value of resource management.

Numbering Note: Requests for items in this series must include the record group number, series designator, NADA-assigned folder number, and agency-assigned item number or NADA-assigned item number. (Example: 95-GP-23-959301 or 95-GP-106-15). The agency-assigned item number is a five or six digit number.

Arrangement: Arranged in two parts (main and supplemental files), then under numerically by Forest Service number/subject classification code.

Access Restriction(s): Unrestricted

Use Restriction(s): Unrestricted

Custodial History: The Forest Service transferred these photographs to the National Agricultural Library, where they were housed in Special Collections. The National Archives accessioned the photographs from the Forest Service in June 2003.

Finding Aid Type: Other

Finding Aid Note: A list of subjects and classification codes is housed with the records and in the research room.

Finding Aid Source: NARS

Accession Number(s): 502-099-01-002

Disposition Authority Number(s): 11-95-08-1, Item 1

Online Resource(s): Index

Subjects Represented in the Archival Material(s): Photographs

Screen shot of NARA catalog 95-GP series description.

Foresters at Work - General
From RG 95
Photographs Relating to National Forests, Resource Management Practices, Personnel, and Cultural and Economic History
National Archives Identifier: 7000800 Local Identifier: 95-GP-3-F950 Container Identifier: 1
Creators: Department of Agriculture, Forest Service, 7/1/1903; Department of Agriculture, Bureau of Forestry, 7/1/1901-7/1/1903

Foresters at Work - General
From RG 95
Photographs Relating to National Forests, Resource Management Practices, Personnel, and Cultural and Economic History
National Archives Identifier: 7000801 Local Identifier: 95-GP-3-39004 Container Identifier: 1
Creators: Department of Agriculture, Forest Service, 7/1/1903; Department of Agriculture, Bureau of Forestry, 7/1/1901-7/1/1903

Foresters at Work - General
From RG 95
Photographs Relating to National Forests, Resource Management Practices, Personnel, and Cultural and Economic History
National Archives Identifier: 7000802 Local Identifier: 95-GP-3-292 Container Identifier: 1
Creators: Department of Agriculture, Forest Service, 7/1/1903; Department of Agriculture, Bureau of Forestry, 7/1/1901-7/1/1903

Foresters at Work - General
From RG 95
Photographs Relating to National Forests, Resource Management Practices, Personnel, and Cultural and Economic History
National Archives Identifier: 7000803 Local Identifier: 95-GP-3-1-1 Container Identifier: 1
Creators: Department of Agriculture, Forest Service, 7/1/1903; Department of Agriculture, Bureau of Forestry, 7/1/1901-7/1/1903

Foresters at Work - Alabama
From RG 95
Photographs Relating to National Forests, Resource Management Practices, Personnel, and Cultural and Economic History
National Archives Identifier: 7000804 Local Identifier: 95-GP-2-465015 Container Identifier: 1
Creators: Department of Agriculture, Forest Service, 7/1/1903; Department of Agriculture, Bureau of Forestry, 7/1/1901-7/1/1903

Foresters at Work - Alabama
From RG 95
Photographs Relating to National Forests, Resource Management Practices, Personnel, and Cultural and Economic History
National Archives Identifier: 7000805 Local Identifier: 95-GP-3-485515 Container Identifier: 1
Creators: Department of Agriculture, Forest Service, 7/1/1903; Department of Agriculture, Bureau of Forestry, 7/1/1901-7/1/1903

Foresters at Work - Alaska
From RG 95
Photographs Relating to National Forests, Resource Management Practices, Personnel, and Cultural and Economic History
National Archives Identifier: 7000806 Local Identifier: 95-GP-3-485343 Container Identifier: 1
Creators: Department of Agriculture, Forest Service, 7/1/1903; Department of Agriculture, Bureau of Forestry, 7/1/1901-7/1/1903

Screen shot of NARA catalog showing 95-GP items.



Research
Services

95-GP: Searching by Divider Numbers

95-GP Divider number [handout](#).

95-GP Divider Numbers for CCC Photos Available Online

Subject Code	Subject Title	Location	Divider
16700	Civilian Conservation Corps	General	347
16700	Civilian Conservation Corps	Alabama	348
16700	Civilian Conservation Corps	Arizona	349
16700	Civilian Conservation Corps	Arkansas	350
16700	Civilian Conservation Corps	California	351
16700	Civilian Conservation Corps	Colorado	352
16700	Civilian Conservation Corps	Colorado	353

Screen shot of NARA catalog search.



Screen shot of NARA catalog search results.



Civilian Conservation Corps - California

From RG: 95

Photographs Relating to National Forests, Resource Management Practices, Personnel, and Cultural and Economic History

National Archives Identifier: 7004479 Local Identifier: 95-GP-351-281933 Container Identifier: 62

Creators: Department of Agriculture. Forest Service. 7/1/1905; Department of Agriculture. Bureau of Forestry. 7/1/1901-7/1/1905



Civilian Conservation Corps - California

From RG: 95

Photographs Relating to National Forests, Resource Management Practices, Personnel, and Cultural and Economic History

National Archives Identifier: 7004480 Local Identifier: 95-GP-351-280688 Container Identifier: 62

Creators: Department of Agriculture. Forest Service. 7/1/1905; Department of Agriculture. Bureau of Forestry. 7/1/1901-7/1/1905



Civilian Conservation Corps - California

From RG: 95

Photographs Relating to National Forests, Resource Management Practices, Personnel, and Cultural and Economic History

National Archives Identifier: 7004481 Local Identifier: 95-GP-351-285409 Container Identifier: 62

Creators: Department of Agriculture. Forest Service. 7/1/1905; Department of Agriculture. Bureau of Forestry. 7/1/1901-7/1/1905



Civilian Conservation Corps - California

From RG: 95

Photographs Relating to National Forests, Resource Management Practices, Personnel, and Cultural and Economic History

National Archives Identifier: 7004482 Local Identifier: 95-GP-351-285408 Container Identifier: 62

Creators: Department of Agriculture. Forest Service. 7/1/1905; Department of Agriculture. Bureau of Forestry. 7/1/1901-7/1/1905



Civilian Conservation Corps - California

From RG: 95

Photographs Relating to National Forests, Resource Management Practices, Personnel, and Cultural and Economic History

National Archives Identifier: 7004483 Local Identifier: 95-GP-351-285375 Container Identifier: 62

Creators: Department of Agriculture. Forest Service. 7/1/1905; Department of Agriculture. Bureau of Forestry. 7/1/1901-7/1/1905



Civilian Conservation Corps - California

From RG: 95

Photographs Relating to National Forests, Resource Management Practices, Personnel, and Cultural and Economic History

National Archives Identifier: 7004484 Local Identifier: 95-GP-351-285352 Container Identifier: 62

Creators: Department of Agriculture. Forest Service. 7/1/1905; Department of Agriculture. Bureau of Forestry. 7/1/1901-7/1/1905



Civilian Conservation Corps - California

From RG: 95

Photographs Relating to National Forests, Resource Management Practices, Personnel, and Cultural and Economic History

National Archives Identifier: 7004485 Local Identifier: 95-GP-351-285433 Container Identifier: 62

Creators: Department of Agriculture. Forest Service. 7/1/1905; Department of Agriculture. Bureau of Forestry. 7/1/1901-7/1/1905



Civilian Conservation Corps - California

From RG: 95

Photographs Relating to National Forests, Resource Management Practices, Personnel, and Cultural and Economic History

National Archives Identifier: 7004486 Local Identifier: 95-GP-351-289947 Container Identifier: 62

Creators: Department of Agriculture. Forest Service. 7/1/1905; Department of Agriculture. Bureau of Forestry. 7/1/1901-7/1/1905



Research
Services

95-GP: Example

Photo ID: 95-GP-351-285481

Original Caption: “Lassen Forest, California
Cook and mess gong. Taken by Capt. Daniel
Sheehan. Sept. 1933”





Research
Services

95-GP: Example

Photo ID: 95-GP-351-285444

Original Caption: “California.
The Saw-filer and his saw. Taken
by Capt. Daniel Sheehan. Aug.
1933”



95-GP: Example

Photo ID: 95-GP-351-285336

Original Caption: “Klamath
Forest California
Herbert Hoover and boys of
Oak Knoll CCC. Man on
extreme right is Milton H.
Esberg-S. F. Fourth man from
the right is Nickolas Roosevelt.
Taken by Capt. Daniel
Sheehan. Oct 1933”





8-DDR: What You'll Find

These photographs relate to CCC drainage projects performed by Division of Drainage camps established in the Bureau of Agricultural Engineering's Central Division. The camps were located in Illinois, Indiana, Iowa, Kentucky, Missouri, and Ohio.

The prints are arranged under broad subject categories including Clearing, Emergency Work, Floods, Miscellaneous, Research, Structures, and Tile.

The majority of the photographs are captioned and include the camp number, camp location, project number, project location, and oftentimes the date. Very few of the photographs feature CCC enrollees. The photographs are primarily views of drainage sites.

8-DDR: What You'll Find



Photo ID: 8-DDR-3-IND-D8-3

Original Caption: “D-8-Indiana, Project A-25. Second shot – loose ends were reconnected and the second try completed the job.”



Photo ID: 8-DDR-44-1

Original Caption: “D-5, Havana, Ill. Project C-112, Otter Creek Flood. A section of a home that was swept away following a 120 foot break in the levee. July 13, 1937. By L.D. Putnam”

8-DDR: What You'll Find



Photo ID: 8-DDR-3-MO-D3-1

Original Caption: “Taken 5/3/38 by Henry G. Berghorn. Showing BAE Trailbuilder No. 90 preparing top of spoilbank of Little River Drainage District Ditch No. 19 for seeding to form a levee. Project No. A64”



Photo ID: 8-DDR-3-MO-D3-4

Original Caption: “Taken 5/3/38 by Henry G. Berghorn. Showing BAE Trailbuilder No. 90 preparing top of spoilbank of Little River Drainage District Ditch No. 19 for seeding to form a levee. Project No. A64”



8-DDR: The Research Room

- Three boxes of prints, one box of negatives
- Prints have NARA assigned item numbers
- A folder list is available in the Still Picture Research Room
- A few photographs were taken by commercial photographers and therefore may be subject to copyright



79-TR: What You'll Find

These photographs document activities related to CCC training programs while operating under the Department of Interior's National Park Service. The images illustrate activities in the eastern and western United States.

Subjects include CCC trainees receiving instruction on forest fire management, activities related to the construction of indoor and outdoor facilities in the national parks, pictures illustrating finished work projects for various parks, trainees receiving instruction on the use of heavy equipment, and activities of camp education committee training programs. There are numerous images of Native Americans participating in park service work projects, as well as work projects at various Native American facilities.

Captioning in this series is inconsistent.

79-TR: What You'll Find



Photo ID: 79-TR-302

Uncaptioned photograph likely showing Native American CCC enrollees in a training program for setting up telephone lines.



Photo ID: 79-TR-304

Uncaptioned photograph likely showing Native American CCC enrollees in a training program for setting up telephone lines.



Research
Services

79-TR: What You'll Find



Photo ID (left): 79-TR-305. Uncaptioned photograph likely showing Native American CCC enrollees in a training program for setting up telephone lines.



Photo ID (right): 79-TR-307. Uncaptioned photograph likely showing Native American CCC enrollees in a training program for setting up telephone lines.



79-TR: The Research Room

- Two boxes of prints, one box of negatives
- Prints have NARA assigned item numbers
- A folder list is available in the Still Picture Research Room
- These photos are unrestricted and are not subject to copyright



115-C and 115-CP: What You'll Find

Mounted prints taken by the Bureau of Reclamation of 71 projects at CCC camps. The prints with captions show the activities of the camps such as digging irrigation ditches, dams, reservoirs, etc.

Mounted prints in 115-C correspond to the album prints in 115-CP. Due to preservation concerns, researchers are required to use mounted prints in 115-C.

Most (if not all) of the photos are captioned with information regarding subject matter, location, and project name and number.

115-C and 115-CP: What You'll Find

Photo ID: 115-C-BR50-
12

Original Caption:

“Ogden River. Huntsville,
Utah. Hyrum Irrigation
Company Diversion Dam –
Pouring concrete, canal
diversion and sluiceway –
Hyrum Project.
L. R. Dunkley.
5/37”

50. BR-12. Ogden River. Huntsville, Utah. Hyrum Irrigation Company Diversion Dam -
Pouring concrete, canal diversion and
sluiceway - Hyrum Project. 5/37.
L. R. Dunkley.





Research
Services

115-C and 115-CP: What You'll Find

BR 13-115 : "CCC Enrollee Off-the-Job Training" - : :
: Foundry class at Yuma project head- : :
: quarters shops. Pouring molten bronze : :
: into molds. : 4-12-39 : C. B. Elliott

Photo ID: 115-C-BR13-115

Original Caption: "CCC
Enrollee Off-the-Job
Training" – Foundry class at
Yuma project head – quarters
shops. Pouring molten
bronze into molds.
4-12-39
C. B. Elliot"



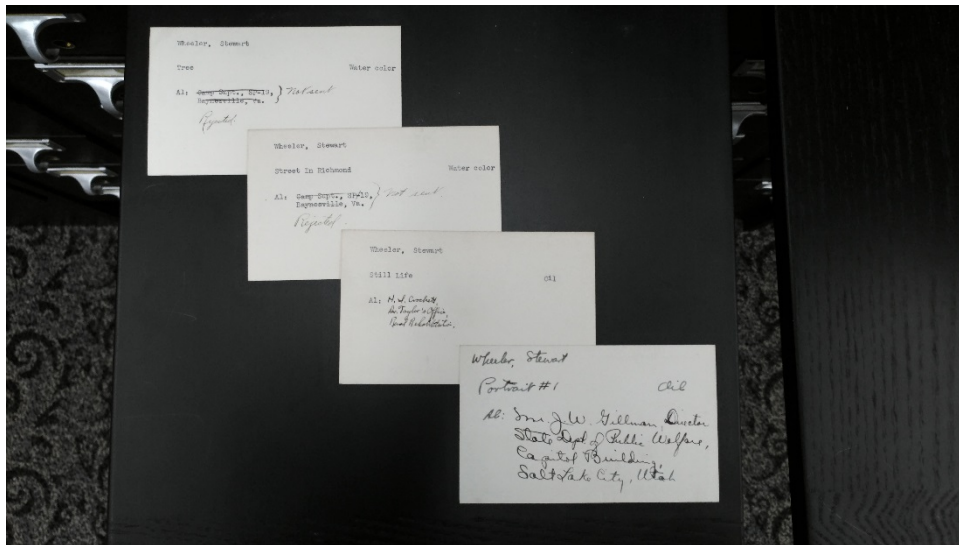


115-C and 115-CP: The Research Room

- Thirty-seven boxes of prints
- Prints have agency assigned project and item numbers
- A box list is available in the Still Picture Research Room
- These photos are unrestricted and are not subject to copyright, however 115-CP albums are in poor condition; researchers will be asked to use the corresponding prints in 115-C

Honorable Mentions

121-Card Index File



121 CCC Artists card index file (right and left), 121 CCC Artists index cards (center)



Research
Services

Honorable Mentions



Photo ID: 83-G-44636

Original Caption: “Newberry County, South Carolina. CCC enrollees planting kudzu on C. C. Spoon’s farm, Newberry County, South Carolina. 200,000 seedlings were planted by CCC enrollees in this county this year 1941. These seedlings were planted on 400 acres representing 100 different farms.”



Photo ID: 210-G-A164

Original Caption: “Poston, Arizona. Civilian Conservation Corps telephone crew building telephone communications from Parker, Arizona to this War Relocation Authority center for evacuees of Japanese ancestry.”



Photo ID: 119-CAL-93

Original Caption: “Madera County, California. Hanging Around. Waiting for the movie house to open at 1 p.m. Sunday in the small San Joaquin Valley town of Tulare. The boy is an enrollee of the Civilian Conservation Corp.”



Where else can I find CCC Photos?

Archives II Textual Records (2nd Floor)

National Archives Kansas City

National Archives Denver

National Archives Chicago

National Archives Seattle

National Archives Boston

National Archives Riverside

National Archives San Francisco

National Archives Fort Worth

National Archives Philadelphia

National Archives Atlanta

Franklin D. Roosevelt Library

Bonus Tip:

You can also request CCC Personnel Records from the National Archives St. Louis!

For more information on how to do this, see Ashley Mattingly's 2015 Genealogy Fair presentation entitled, "Civilian Conservation Corps (CCC) Personnel Records."

- [Video](#) (starts at 4:08:50)
- [Presentation Slides](#)
- [Handout 1 of 2](#)
- [Handout 2 of 2](#)



Where else can I find CCC Photos?

- ccclegacy.org
- National Parks Service
- Smithsonian Institution
- Library of Congress
- Colleges and Universities
 - University of Idaho
 - University of Michigan
 - Weber State University
 - Lewis University
- State Repositories
 - Washington State Archives - Online Database
 - Massachusetts Collections Online
 - South Carolina Electronic Records Archive
- Local Repositories
 - Libraries
 - Archives
 - Historical Associations



NATIONAL
ARCHIVES

Research Services



Thank You!

[Contact us at: stillpix@nara.gov](mailto:stillpix@nara.gov)

Photo ID (above): 35 K 108

Original Caption: Enrollee crew from Camp SCS 0 7, Warrenton, Oregon, under foreman Tobin gathering Lupin seed for replanting the beach area near Warrenton.

Note the three year old growth of Scotch Broom in the background.

NATIONAL ARCHIVES › RESEARCH SERVICES



2018 Virtual Genealogy Fair



**Thank you for attending!
Please stay tuned for the next session.**

**If we did not get to your question,
you may submit it to stillpix@nara.gov**

**Video recording and handouts
will remain available at
www.archives.gov/calendar/genealogy-fair**



Feedback



We value your opinion.

Please take a few minutes to complete a short evaluation. Your comments help us maintain the quality of our services and plan future programs.

Click ⇒ [Event Evaluation](#)

www.surveymonkey.com/r/KYREventEval