



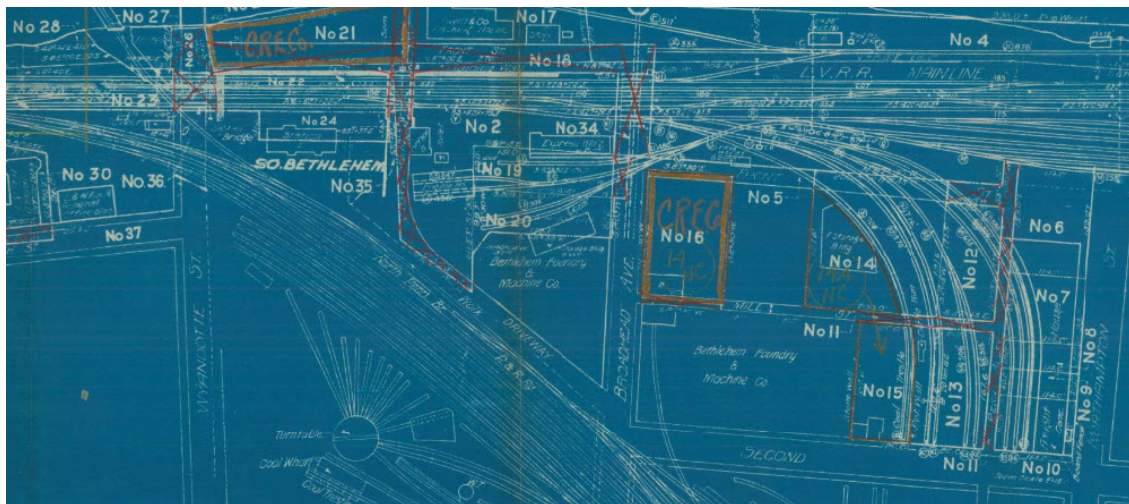
CATALOG

[View email in your browser](#)

[Share this email with a friend](#)

Workin' on the Railroad: Help Tag Railroad Valuation Maps

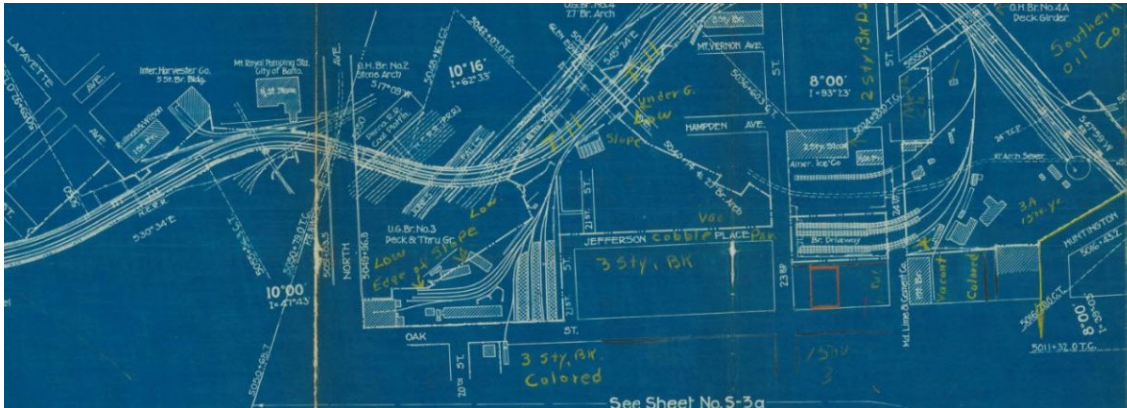
Under the Valuation Act of 1913, the Interstate Commerce Commission (ICC) used [Railroad Valuation maps](#) to help evaluate railroad property. The original maps were created between 1915 and 1920 by ICC and railroad employees who were tasked with inventorying most of the rail lines in the United States. The information within these maps was to be used to determine rates for transportation of freight via those rail lines.



Valuation Section 7, Sheet 12, 6/30/1917, Valuation Maps for the Lehigh Valley Railroad. [National Archives Identifier 100306531](#)

In the Cartographic Branch at the National Archives, these records are part of [RG 134: Records of the Interstate Commerce Commission](#), totaling approximately 11,000 cubic feet of materials. Mostly blueprints, these maps are divided into two sub-groups: the original valuation maps and the revised maps.

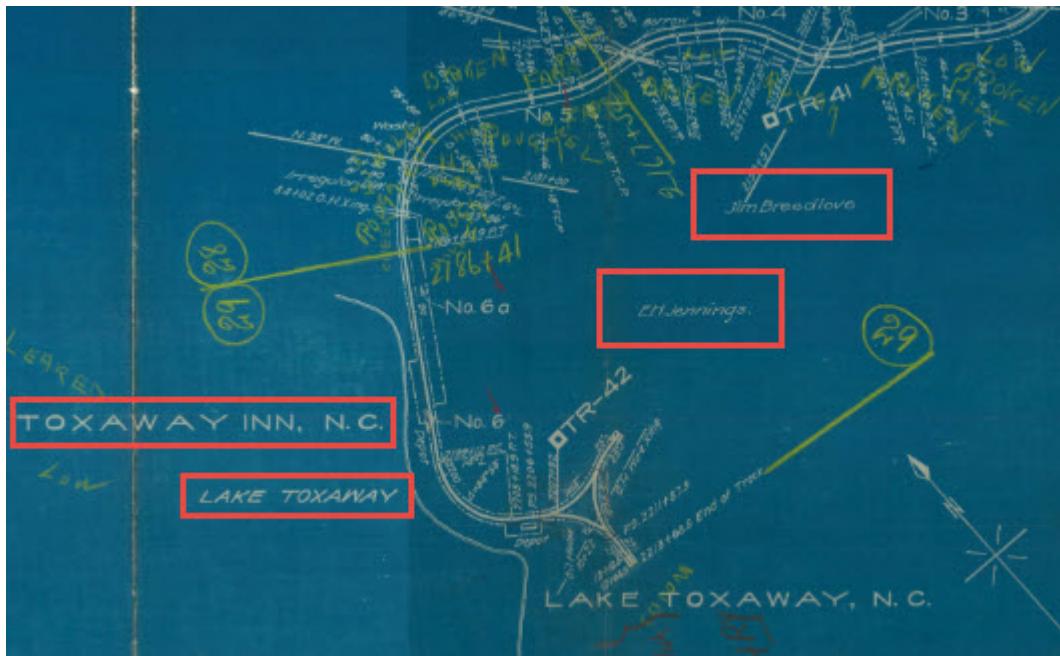
The records are among the most requested records from the Cartographic Branch, and the wealth of information found within these maps makes it easy to see why. The revised maps were updated until approximately 1960, and allows you to follow changes in the railroad over time. These maps contain a wealth of detail, including information about the railroad's facilities along the rail lines, land adjacent to the railroad (sometimes bearing the land owner's name), the layout of city blocks at the time the map was drawn, and who was operating the railroad at the time.



Valuation Section 16.1, Sheet 3, Valuation Maps for the Baltimore and Ohio Railroad. [National Archives Identifier 109181929](#)

As more of these maps are digitized and available to view in the National Archives Catalog, we've created a special tagging mission for our citizen archivists: help us identify geographic locations and landowner information within each map! Tagging these features and details within the maps will help make these records searchable by name and location.

For example, in this [valuation map for the Southern Railway Company in North Carolina](#), look for the names of cities, landowners, or grantors within the record. Type the names you see in the Tag field. The next time you search for those names and locations, this map will be among the search results!



Add tags to identify geographic locations and landowner information, such as: Jim Breedlove, E.H. Jennings, Toxaway Inn N.C., Lake Toxaway

Special thanks to Carol Swain, Amy Edwards, Ryan McPherson, and Peter Brauer for their insight on this topic. Learn more about how to research these records in their post on the [Unwritten Record blog](#).

Get Started Tagging!

Today's Document Citizen Archivist Takeover!

We love finding gems to feature on our [Today's Document accounts](#). Have you ever wanted to be the one digging through our Catalog? Here's your chance!



Once again, we are hosting a takeover of our [Today's Document](#) accounts for the whole month of April. Participating is easy! Simply click our [search link](#) to browse documents from April, or choose one of your own favorite April-dated docs. Once you've found a document you think would make a great feature, enter it through our [submission form](#). You just might see the document you've chosen featured on our Today's Document account. We hope you love it as much as we do!

Sunshine Week Update: Mission Complete!

Last week, we [challenged citizen archivists](#) to completely transcribe two historic civil rights cases during Sunshine Week. You did it!

Within one week, 103 citizen archivists completely transcribed more than 1,800 pages, helping to make these records more searchable and discoverable in the National Archives Catalog. Thank you!



The fingerprint card of Rosa Parks was produced in association with her arrest for refusing to obey orders of a bus driver on December 1, 1955 in Montgomery, Alabama. [National Archives Identifier 279205](#)

Thanks to all of our citizen archivists who helped complete the challenge!

acooney93

lcahalan

animaldoctor

leopatra

apaxton630

lisacardyn

arsmith7

lisarussell

avs

lschol

beckyfoster25

lucaslaron

bibliophile

lunablue60

bjmerm

madouc

bluejwrtr

maileann

bmorel

mandm802

bohr

marijo1050

brutledge4	mdy
carolannfg	mindyconner
caroleland	molly846
cfetters	monicah
chryl	monsenjp
cmac	mwolfe
cnanco	ndlund
comfortablynumb	nightingale
debrawoodall	nigunbor
debwilson	nprofit
deerrun	pamwig
dhallam	pandora2019
dinatale	peneloper
donnadp	phillybuster92
downdb	ppl2840
durneyr	questforkin
elpoore	raymerwf
franniej	rememberme
gastrick	rkirchner
ginahle	rland09
gr8fulheart	roland1118
gschenk007yahoocom	sahalemd
guillermo	sfemet
historiker	sipesericgmailcom
hubers1	smithal
ishamclendon3	solderini
jdjdtx	srh2146
jessicah706	story1267
johnwats	supermrc123

johnwilkesbooth

suzanne326

jpf362

taleen

jsgoodman2018

termon16

jsprake

thomasmon

jssaraceno

tibet

juliaacton

tjkrem41

katies

tkieffer

kb1213

transcribingfanatic

kbasehart

twinmom22

kellyharper

wvcomp16

kenworth89

zsjoy

killiankane



Missed an issue, or want to catch up on previous newsletters?

See our [email newsletter archive](#).

Questions or comments? Email us at catalog@nara.gov.



[Privacy policy](#)

[Subscribe](#) or [Unsubscribe](#)