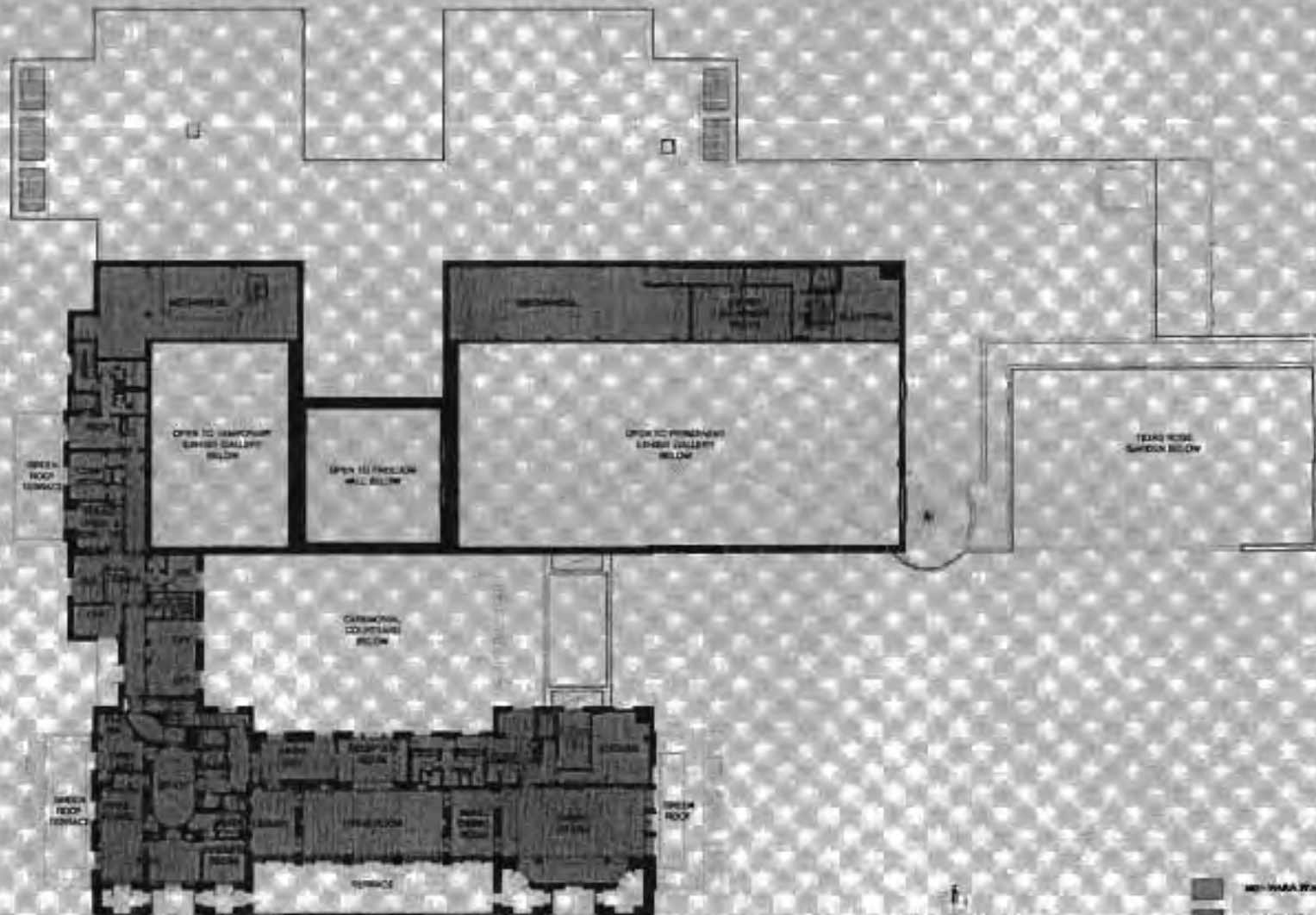


GROUND FLOOR PLAN  
 10/13/04  
 SCALE: 1/8" = 1'-0"

GEORGE W. BUSH PRESIDENTIAL CENTER  
 SOUTHERN METHODIST UNIVERSITY  
 DALLAS, TEXAS  
 ROBERT A. M. STERN ARCHITECTS





SECOND FLOOR PLAN  
 APRIL 2011  
 SCALE: 1/8" = 1'-0"  
 1" = 12'-0"

GEORGE W. BUSH PRESIDENTIAL CENTER  
 SOUTHERN METHUEN UNIVERSITY  
 DALLAS, TEXAS  
 ROBERT A. M. STERN ARCHITECTS

- NON-WALKWAY
- WALKWAY
- GLAZED SPACE