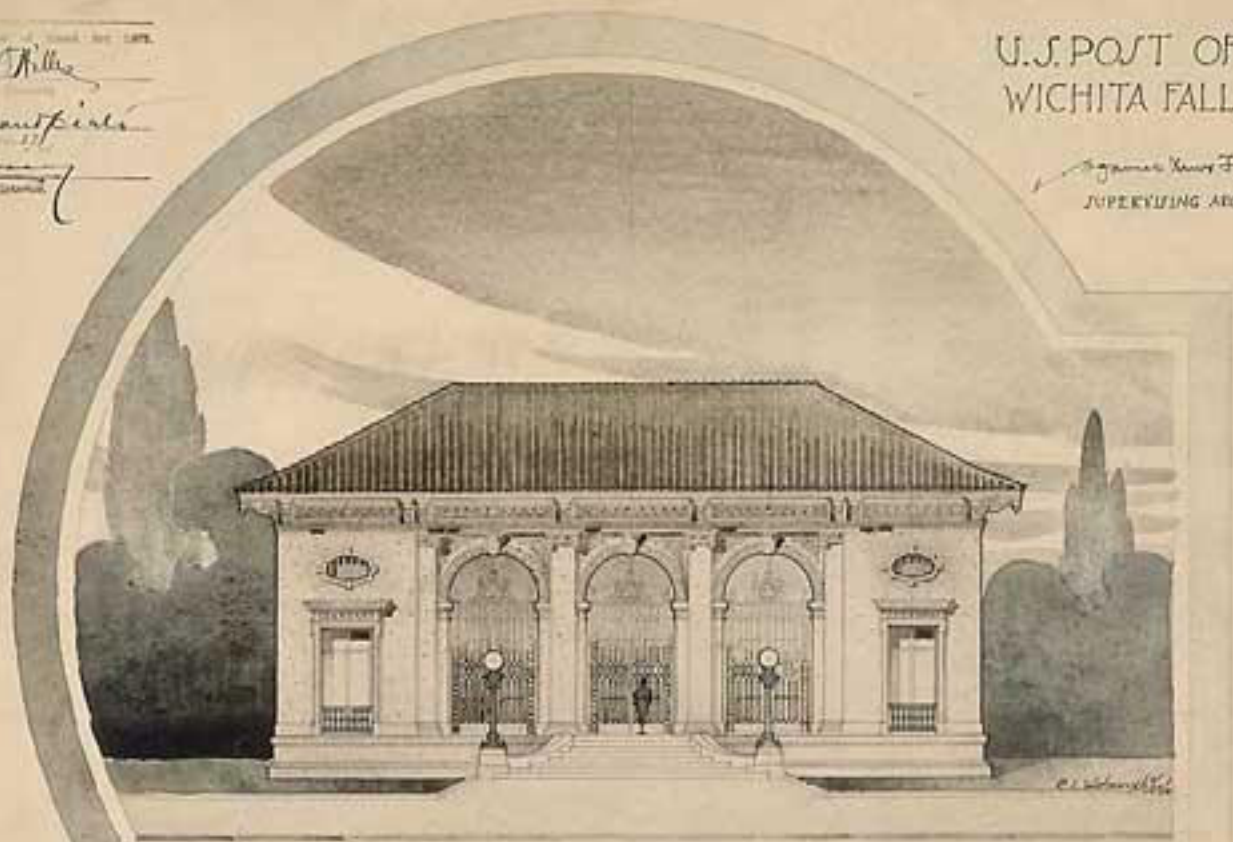


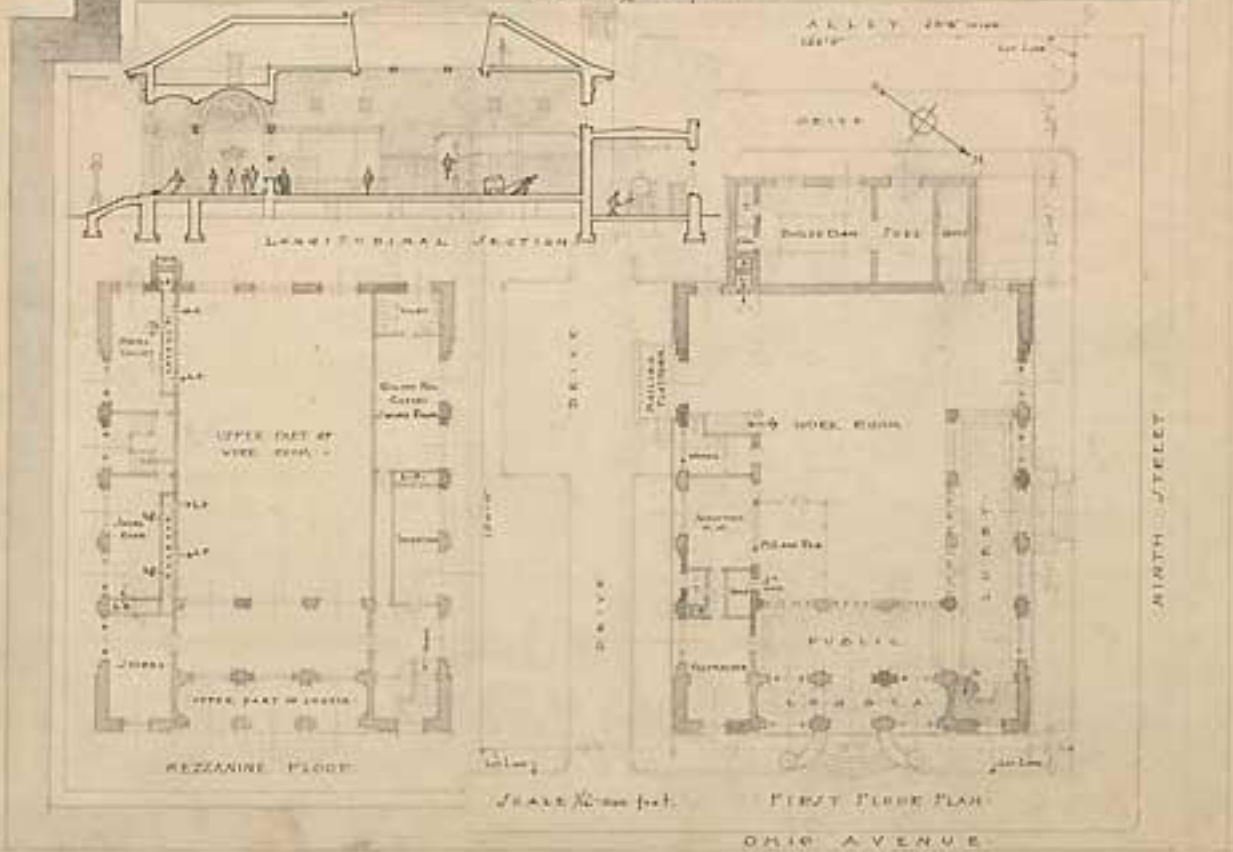
W. H. Miller  
 Chief Engineer  
 U.S. Post Office  
 Wichita Falls, Tex.

U.S. POST OFFICE  
 WICHITA FALLS, TEX.

James Knox Ferry, Jr.  
 SUPERVISING ARCHITECT.



SCALE 3/8" = 10' feet



OLD BUILDING SOLD TO CITY 2/19/56.