

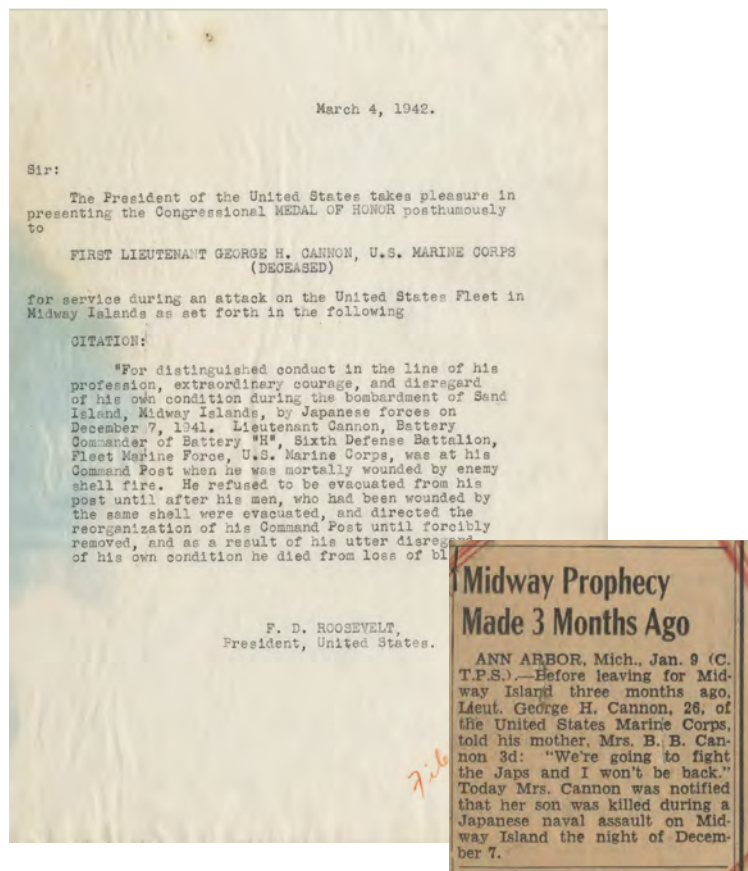
# December 2011

A MONTHLY CALENDAR OF EVENTS OPEN TO THE PUBLIC

## *First Lieutenant George H. Cannon, U.S. Marine Corps*

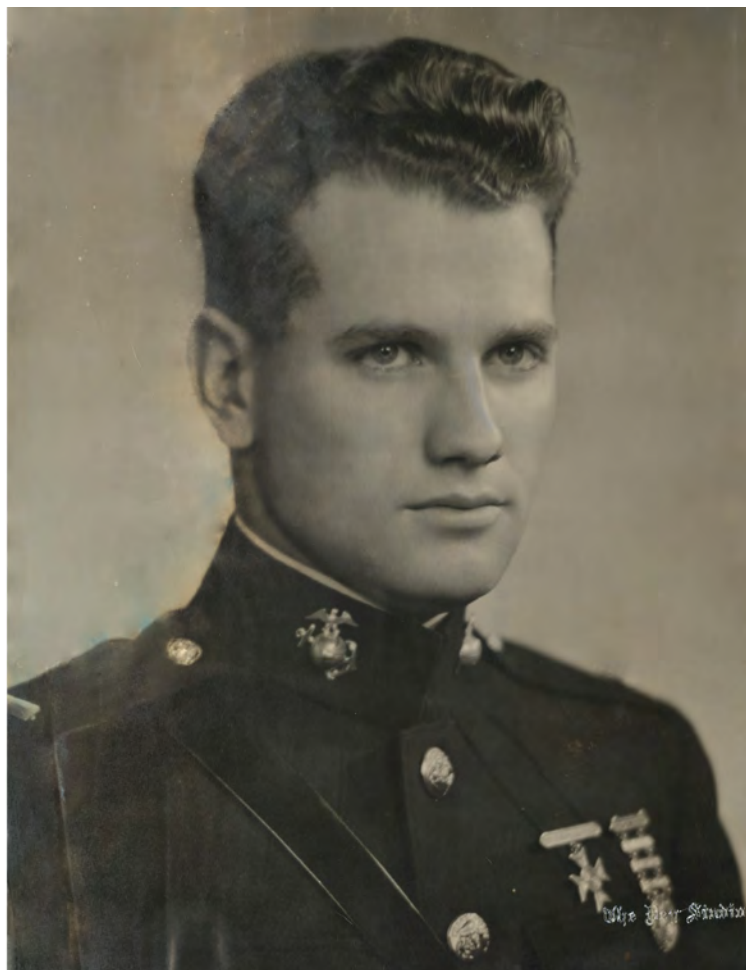
The reports of a sneak attack on Pearl Harbor by the Japanese on December 7, 1941, had ensured that the troops stationed at Midway were on alert. As night fell on Midway Atoll, two Japanese destroyers were sighted off the southwest coast of Sand Island, the largest in the group of islands. At 9:35 p.m., the Japanese fired the first shots at the shore defenses, with successive salvos steadily moving toward strategic targets. The American forces returned fire, repulsing the enemy destroyers within 30 minutes of the start of the attack.

During the attack, an enemy salvo hit 1st Lt. George Cannon's command post, striking him with shrapnel. Despite heavy blood loss, Cannon refused medical evacuation, instead overseeing the evacuation of his injured men and the restoration of communications. He was, in the end, forcibly removed to an aid station where he died shortly after from blood loss. For this display of courage, distinguished conduct, and disregard for his own well-being, Cannon was awarded the Medal of Honor.



Left: Medal of Honor Citation from President Franklin D. Roosevelt, March 4, 1942, 1 page, Official Military Personnel File of George H. Cannon, National Personnel Records Center (NPRC).

Right: "Midway Prophecy Made 3 Months Ago," No Date, Official Military Personnel File of George H. Cannon, NPRC.



Above: First Lt. George H. Cannon, undated, Official Military Personnel File of George H. Cannon, NPRC.

# NARA West Coast December 2011

Post card of the ship *SS Northern*, covered with ice and snow on the Alaskan coast after a storm.

Sir Henry Wellcome Collection, 1856-1936  
National Archives at Anchorage



ifes. 4904. S.S. Northwestern. Alaskan Coast. After a storm.

SUNDAY

MONDAY

TUESDAY

WEDNESDAY

THURSDAY

FRIDAY

SATURDAY

1

2

3

**Exhibit:  
Seattle, WA**

**"Faces of the Pacific Northwest"  
9/1-12/11**

Washington, DC  
**National Council of  
Social Studies Native  
America's Struggle  
for Tribal Existence**  
4:30 - 5:30 P.M.  
K-12 Teachers  
Workshop  
206-336-5115

4

5

6

7

8

9

10

Seattle, WA  
**"Brick Wall"**  
Genealogical  
Discussion Group  
11:30 A.M. - 1 P.M.  
Genealogists  
Workshop  
206-336-5115

11

12

13

14

15

16

17

18

19

20

21

22

23

24

25

26

27

28

29

30

31

The National  
Archives at

Riverside  
951-956-2000  
riverside.archives@nara.gov

San Francisco  
650-238-3501  
sanbruno.archives@nara.gov

Denver  
303-407-5740  
denver.archives@nara.gov

Seattle  
206-336-5115  
seattle.archives@nara.gov

Anchorage  
907-261-7800  
alaska.archives@nara.gov

# NARA EastCoast December 2011

**Honeycomb Bluff Caverns, 1937**  
Records of the Tennessee Valley Authority  
Record Group 142  
National Archives at Atlanta



SUNDAY	MONDAY	TUESDAY	WEDNESDAY	THURSDAY	FRIDAY	SATURDAY
					1	2
					3	
					4	5
					6	7
					8	9
					10	
					11	12
					13	14
					15	16
					17	
					18	19
					20	21
					22	23
					24	
					25	26
					27	28
					29	30
					31	

The National Archives at

Boston  
866-406-2379  
waltham.archives@nara.gov

New York City  
866-840-1752  
newyork.archives@nara.gov

Philadelphia  
215-606-0100  
philadelphia.archives@nara.gov

Atlanta  
770-968-2100  
atlanta.archives@nara.gov

# NARA Midwest December 2011

**Buffalo in the snow, ca. 1950**  
Records of the National Park Service,  
Record Group 79  
National Archives at Kansas City



SUNDAY	MONDAY	TUESDAY	WEDNESDAY	THURSDAY	FRIDAY	SATURDAY
				1	2	3
<b>Exhibit:</b> <b>Chicago, IL</b> <b>"Becoming American: Immigrants, the Federal Courts in Chicago, and the Expansion of Citizenship, 1872-1991"</b> <b>Ongoing</b>				Lawrence, KS <b>How to Get Started with Research at the National Archives</b> 11:15 A.M. and 1 P.M. Undergraduate Students Lecture 816-268-8000	Fort Worth, TX <b>The 1940 Federal Population Census</b> Noon-1 P.M. Genealogists Workshop 817-831-5620	
4	5	6	7	8	9	10
<b>Exhibit:</b> <b>Camden Point, MO</b> <b>"Christmas in the Archives"</b> <b>12/3-15/11</b>		St. Louis, MO <b>Remembering Pearl Harbor: 70 Years Later</b> 6:30 P.M. General Public Symposium 314-801-0847 <hr/> Kansas City, MO <b>Justice on the Prairie</b> 6 P.M. General Public Lecture 816-268-8000			Fort Worth, TX <b>Discover the Story of Your Home</b> Noon-1 P.M. Genealogists/Workshop 817-831-5620 <hr/> Kansas City, MO <b>Information Booth</b> 11 A.M. General Public 816-268-8000	Kansas City, MO <b>Perserving Family Memories</b> 10 A.M. Genealogists Workshop 816-268-8000
11	12	13	14	15	16	17
18	19	20	21	22	23	24
					<b>Exhibit:</b> <b>St. Louis, MO</b> <b>"Documented Rights"</b> <b>10/3/11-4/15/12</b>	
25	26	27	28	29	30	31
<b>Exhibit:</b> <b>Kansas City, MO</b> <b>"Divided Loyalties"</b> <b>12/27/11-4/28/12</b>					<b>Exhibit:</b> <b>Kansas City, MO</b> <b>"Picture This!"</b> <b>Through 12/31/11</b>	

The National Archives at

Chicago  
773-948-9001  
chicago.archives@nara.gov

Kansas City  
816-268-8000  
kansascity.archives@nara.gov

St. Louis  
314-801-0847  
Archival Programs Division

Fort Worth  
817-831-5620  
ftworth.archives@nara.gov