

Records Management Building Blocks: The EPA Superfund Records Reference Model

Steve Wyman
U.S. Environmental Protection Agency

05/08/2007

What is the Records Reference Model?

The RRM is a logical data model that captures the following types of data:

- Data needed to manage EPA records throughout the record’s life-cycle, from creation to archival or destruction.
- Data required to manage access of records concerning individuals. For clarity, systems that contain records concerning individuals are legally referred to as “Systems of Record”. All other systems that capture records are referred to as “Record Systems”.
- Business Reference Model data. This section of the model can also be used to capture any type of record categorization structure.
- Data concerning record guidance, including FOIA and Privacy Act.
- Data for the people, organizations and positions that relate to records management and access.

Major Areas of the RRM

- Records
(typed by form or status)
- Agents
(typed into people and organizations; sub-typed by role)
- Agency File Plan Categories
- Dispositions
- Comprehensive Records Schedules
- Events
- Topics
- Business Functions
- Repositories

RRM Sources and Logical Integrations

- To date, the RRM represents records management information from the following information sources:
- DoD 5015.2, version 3; Records Management System Standard
- ISO 15489-1; Records Management Standard and 15489-2; Records Management Guidelines
- FEA and EPA Business Reference Models
- FEA Data Reference Model
- 5 USC 552; Freedom of Information Act and 5 USC 552a; Privacy Act (in process).

The following information is scheduled to be analyzed and added to the RRM in the near future:

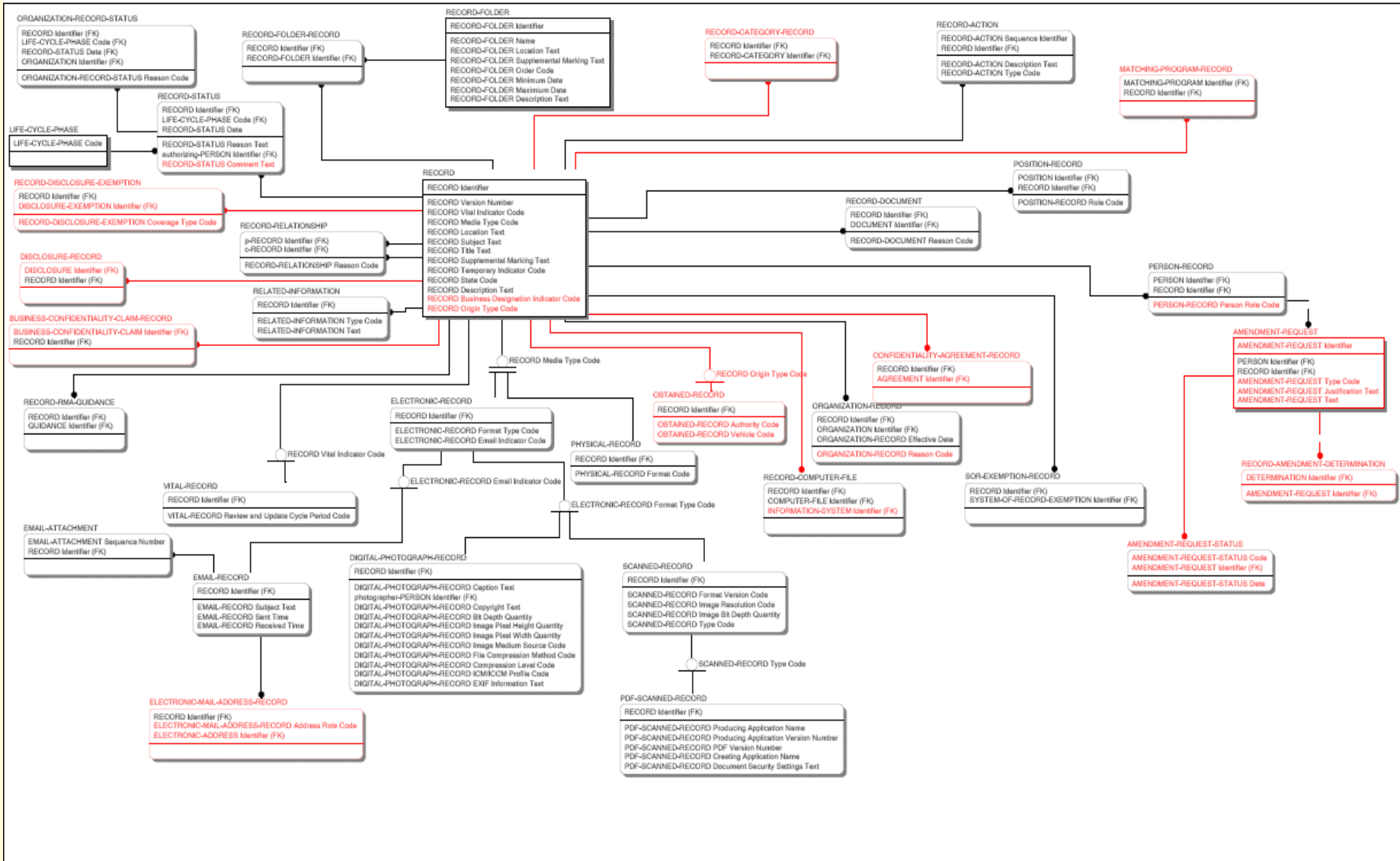
- Records Value Framework (still to be developed)
- NARA Records Management Service Components.

Why Build a Records Reference Model?

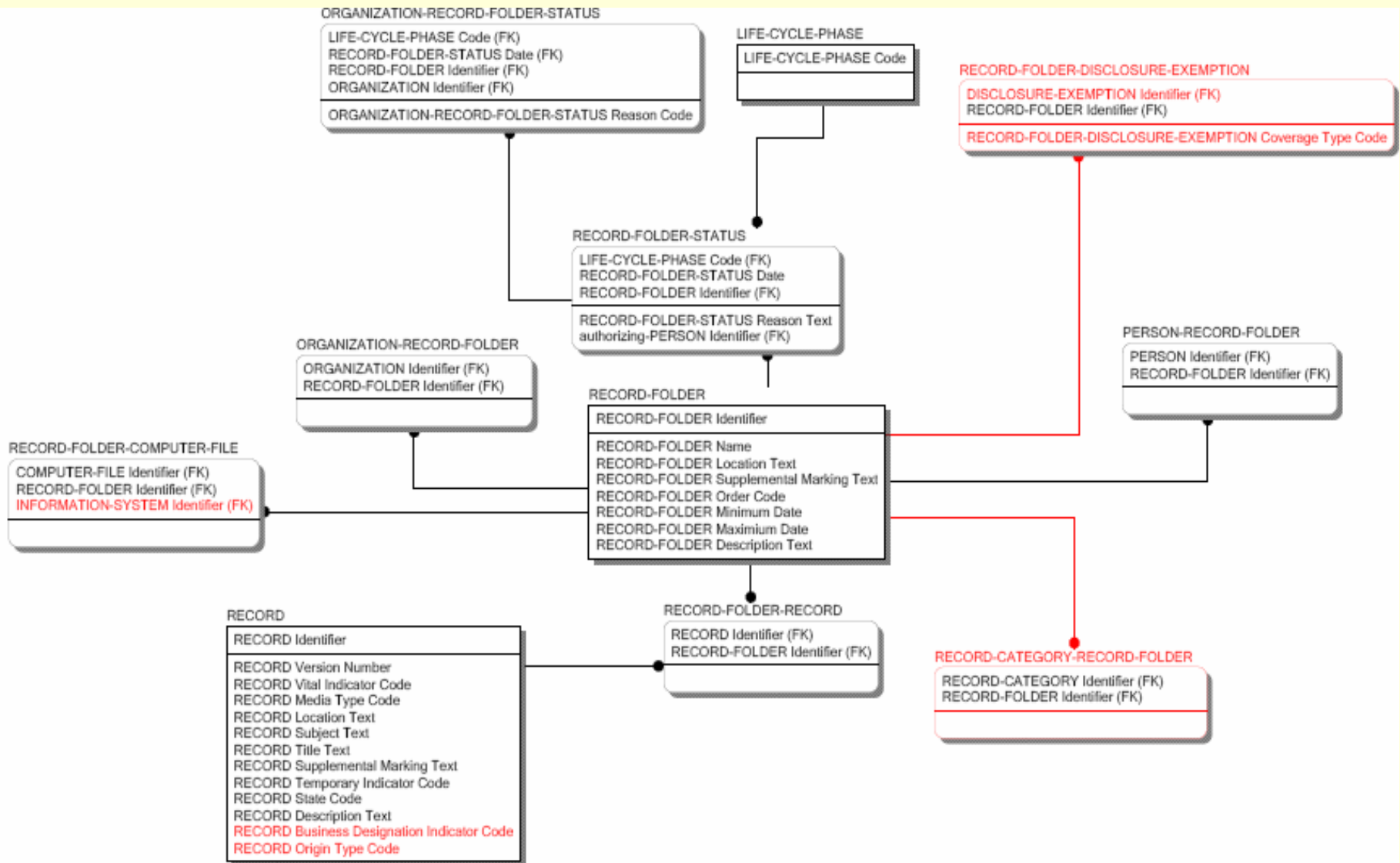
- Designed to Behave As a Layer of the Federal Enterprise Architecture
- IT Systems Integration Projects
- Establish Solid [I]RM Baselines
- Cornerstone of a Superfund “Content Architecture”
 - to complement the EPA’s Enterprise / Solutions Oriented Architecture plans
 - ECMS project

EPA Superfund Records Reference Model

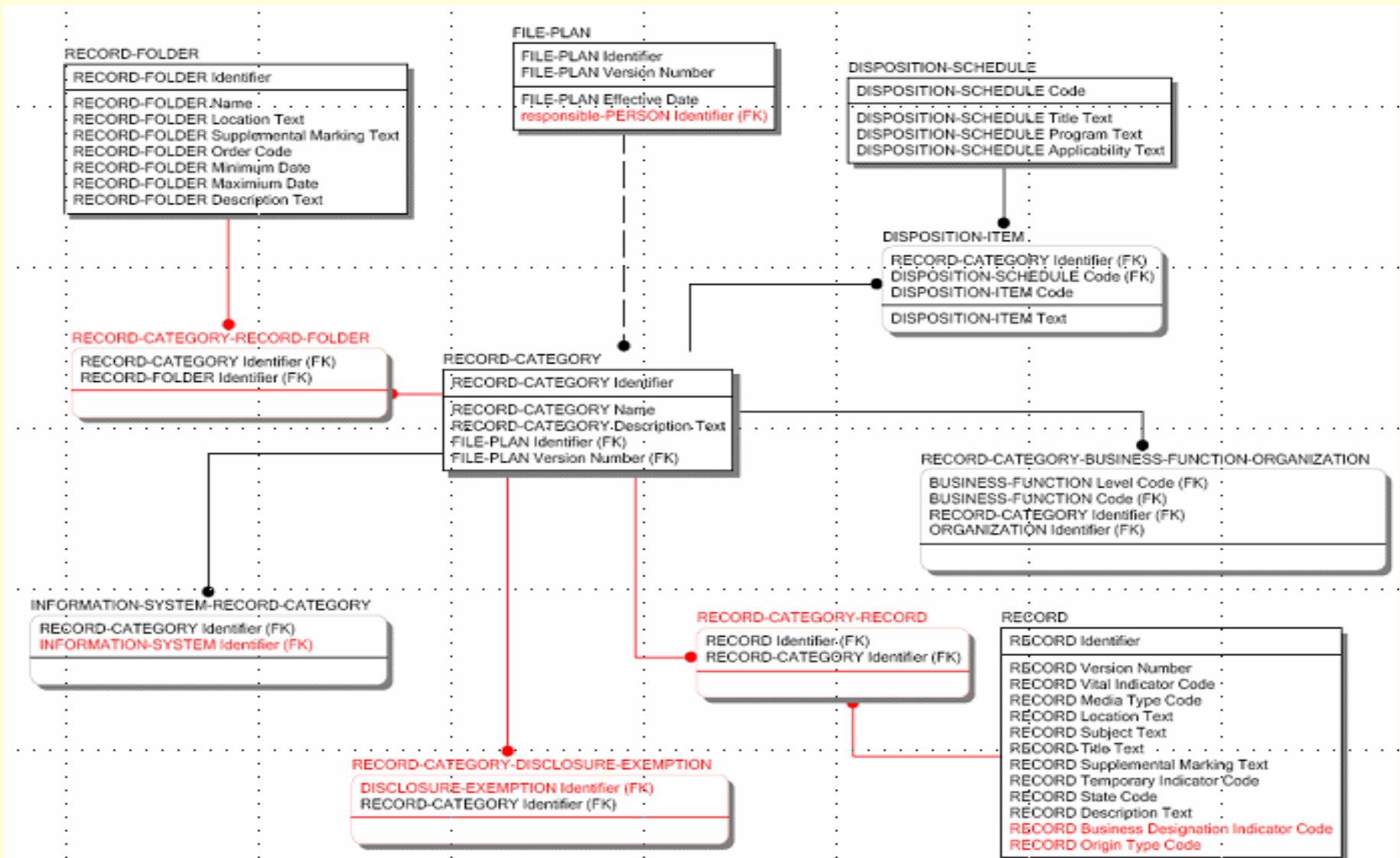
RRM LOGICAL 2.4 - FOIA_PA -- Display 1 / Record



Basic Records Metadata View

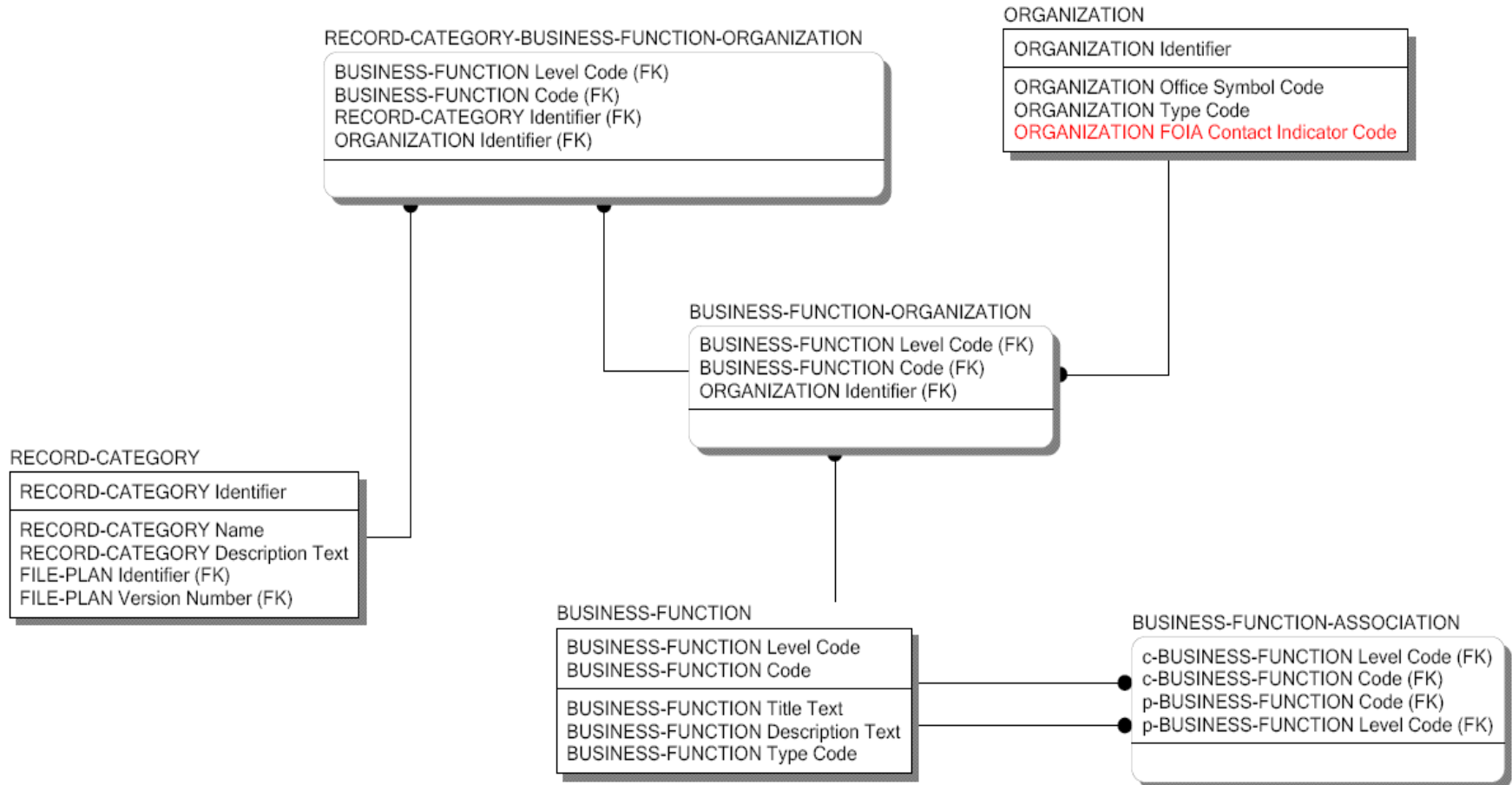


RRM Records Folder View



Business Reference Model View

RFM LOGICAL 2.4 - FOIA_PA -- Display1 / BRM



1 1 / 1 1 ... 9:00 AM 4/15/2013

SDMS Metadata Analysis

