

# ROUTING AND RECORD SHEET

SUBJECT: (Optional)

FROM:	EXTENSION	NO.
Originator: <u>RHawkey</u>		B- <u>3104</u>
		DATE
		07 FEB 1972

TO: (Officer designation, room number, and building)	DATE		OFFICER'S INITIALS	COMMENTS (Number each comment to show from whom to whom. Draw a line across column after each comment.)
	RECEIVED	FORWARDED		

1.			<i>oo</i>	<p><b>CI/SO Internal Use Only</b></p> <p>This memo is not to be disseminated outside CI/SO without prior permission from Chief, CI/SO, Richard Ober.</p> <p><b>BASED ON:</b></p> <p>Doc: Daily Frontier Reports Date: Various Dates File: PRC TVL Source: <u>STRYLIC</u></p> <p>Doc: FBIS Reports; various dates filed PRC TVL; S: OVERT</p> <p>Doc: <u>1344</u>, 1 Nov 71, filed MLJ; S: JAGUAR</p> <p>Doc: <u>VIENTIANE 1705</u>, 27 Oct 71 <u>VIENTIANE 1690</u>, 15 Oct 71</p> <p><b>DISTRIBUTION:</b> Filed 200-8-88; S: JKLAN</p> <p>Memo chrono Extra copy file Production files: Station: <u>VIENTIANE</u>; Source: <u>STRYLIC</u>; <u>JAGUAR</u>; <u>FBIS</u>; <u>JKL</u></p> <p>Subject files: PRC TVL (RH) DRV TVL (RH) NKPR TVL (RH)</p> <p><b>ACTION:</b></p>
Branch Chief:			<i>oo</i>	
2.		<i>3 Feb</i>	<i>oo</i>	
DC/CI/SO:			<i>oo</i>	
3.		<i>4 Feb</i>	<i>oo</i>	
Typist:			<i>oo</i>	
4.			<i>oo</i>	
Originator:			<i>oo</i>	
5.			<i>oo</i>	
Branch Chief:			<i>oo</i>	
6.		<i>7 Feb</i>	<i>oo</i>	
DC/CI/SO:			<i>oo</i>	
7.		<i>7</i>	<i>oo</i>	
C/CI/SO:			<i>oo</i>	
8.			<i>oo</i>	
Logging:			<i>oo</i>	
9.			<i>oo</i>	
File: Memo chrono			<i>oo</i>	
10.			<i>oo</i>	
11.			<i>oo</i>	
12.			<i>oo</i>	
13.			<i>oo</i>	
14.			<i>oo</i>	
15.			<i>oo</i>	

8613

INDEXED

~~SECRET~~  
 FOREIGN DISSEM/NO DISSEM ABROAD

B-3104

07 FEB 1972

**SUBJECT** : Travel of U.S. Citizens to North Vietnam, North Korea, and the People's Republic of China. (IS)

**REFERENCE** : Your memorandum dated 23 July 1971, Subject: Travel Control Legislation. (IS)

1. In response to your request in referenced memorandum, we have attached the following pertaining to travel of U.S. citizens to North Vietnam, North Korea, and the People's Republic of China during the period 1 October through 31 December 1971:

Attachment A: Summary Alphabetical Listing of American Travelers During the Period 1 October through 31 December 1971 to North Vietnam, North Korea, and the People's Republic of China, Arranged Separately by country.

Attachment B: Descriptive Summaries of Group Travel Referred to in Attachment C.

Attachment C: Consolidated Alphabetical Listing of American Travelers During the Period 1 October through 31 December 1971 to North Vietnam, North Korea and the People's Republic of China.

2. For previous information on American travel to North Vietnam, North Korea, and the People's Republic of China, you are referred to our memorandum B-2915, dated 28 October 1971.

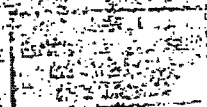
Please transmit copies via COMSEC channel.

Attachment: a/s

Originated by: CI/SC:R.Hawkey;jmg  
 Based on: See cover sheet. Source: See cover sheet  
 Distribution: Original - FBI (Mr. Wannali) via CI/SC courier  
 1 - B-memo-chrono  
 1 - DRV.tvl/sens/bw  
 1 - PRC.tvl/sens/rh  
 1 - NKPR.tvl/sens/rh

NO FOREIGN DISSEM/NO DISSEM ABROAD

~~SECRET~~



SECRET

NO FOREIGN DISSEMINATION DISSEM ABROAD

Attachment A

Summary Alphabetical Listing of  
American Travelers During the Period  
1 October through 31 December 1971  
To North Vietnam (DRV), North Korea (NKPR),  
and the People's Republic of China (PRC)  
Arranged Separately by Country

DRV - 4 persons

ARONSON, Henry M.  
 BARROW, Willie  
 SWERDLOW, Amy  
 ZIGAS, Irma

NKPR - 1 persons

FAULKNER, Stanley

PRC - 156 persons

ANDERSON, Betty Lau  
 ARIYOSHI, Koji  
 AVAKIAN, Robert Bruce  
 BAY, Robert  
 BERGMAN, Leibel  
 BOHO, Brenda  
 BROWN, Elaine  
 CHAN, Cecile L.  
 CHANG, Gordon Hsiao Shi  
 CHAR, Helen  
 CHATTERJEE, Ella  
 CHEN, Chang Shu  
 CHEN, Su Tsung  
 CHIN, Ho Doon  
 CHIN, Toy Ding  
 CHOW, Kum Yung  
 CHOW, Kun Sang  
 CHOY, Harold  
 CHU, Quon  
 CHUCK, Philip Kan Leong  
 COE, Ruth Evans  
 CORTINAS, Helen Cheng  
 DOWNEY, Marry Veronica  
 DOWNEY, William Francis  
 DRESSNER, Joseph Matthew  
 EDMOND, Gwendolyn Rose  
 EPTON, William

NO FOREIGN DISSEMINATION DISSEM ABROAD

SECRET

SECRET

-2-

NO FOREIGN DISSEM/NO DISSEM ABROAD

FECTEAU, Richard  
 FINCHER, Beverly Hong  
 FINCHER, Leta Hong  
 FONG, Albert  
 FONG, Lai Ho  
 FRANK, Richard Cyril  
 FRANK, Susan Warren  
 FRISCH, Marilyn  
 FRISCH, Saul  
 FRISCH, Tamar  
 GALUISO, Mary Jane  
 GAMAN, Pearl S.  
 GEE, George Hung  
 GIN, Hoo  
 GOLDBERG, Miriam  
 GOLDMAN, Edward Michael  
 GRANICH, Grace  
 GRANICH, Max  
 GREENBERG, Mary Louise  
 GUEN, Geng Lee Jin  
 GUEN, Lim Shee  
 GUINTO, Marie Martin  
 HARBERT, Mary Ann  
 HAWKINS, John Noel  
 HAYS, Helen Jean  
 HILL, Cheryl Blanche  
 HINTON, Carmelita Chase  
 HINTON, Carmelita  
 HINTON, Joanne  
 HINTON, William H.  
 HO, Kwai  
 HO, Yau Fai  
 HONG, Seid  
 HOM, Ben Git Suey  
 HSIA, Victor  
 HSU, John Kwong Han  
 HSUEH, Chun Tu  
 HU, Gladys Lee  
 HU, Jackson Kee  
 HUANG, Philip Chung Chih  
 JOHNSON, Kenneth Harold  
 JONES, Lynn Weatherbee  
 JUNG, Ken Win  
 KLEHR, Eileen Ellen  
 KLEPPER, Nancy Jeans  
 KLEPPER, Robert  
 KOCHIYAMA, Edmund Yutaka  
 KOCK, Linda  
 KWOCK, Anna Lan Ow

NO FOREIGN DISSEM/NO DISSEM ABROAD

SECRET

SECRET

NO FOREIGN DISSEM/NO DISSEM ABROAD

Attachment C

Consolidated Alphabetical Listing  
of American Travelers During the Period  
1 October through 31 December 1971

NOTE: Numerical designations in GROUP column refer to paragraphs in Attachment B. In FROM column HK refers to Hong Kong, PRC refers to People's Republic of China, DRV refers to North Vietnam, UK refers to United Kingdom, NKPR refers to North Korea.

<u>NAME</u>	<u>FROM</u>	<u>TO</u>	<u>DATE</u>	<u>GROUP</u>
ANDERSON, Betty Lau	HK	PRC	10 Oct 71	
	PRC	HK	23 Oct 71	N/A
ARIYOSHI, Koji	HK	PRC	28 Dec 71	N/A
ARONSON, Henry M.	LAOS	DRV	ca. 10 Dec 71	
	DRV	LAOS	Dec 71	N/A
AVAKIAN, Robert Bruce	PRC	HK	31 Oct 71	B-2
BARROW, Willie	LAOS	DRV	15 Oct 71	
	DRV	LAOS	26 Oct 71	H-4
BAY, Robert	PRC	HK	08 Oct 71	B-1
BERGMAN, Leibel	PRC	UK	31 Oct 71	B-2
BOHO, Brenda	HK	PRC	13 Dec 71	B-3
BROWN, Elaine	PRC	HK	08 Oct 71	B-1
CHAN, Cecile L.	HK	PRC	12 Oct 71	
	PRC	HK	06 Nov 71	N/A
CHANG, Gordon Hsiao Shi	PRC	HK	25 Oct 71	N/A
CHAR, Helen	HK	PRC	16 Oct 71	
	PRC	HK	29 Nov 71	N/A
CHATTERJEE, Ella	PRC	UK	31 Oct 71	B-2
CHEN, Chang Shu	HK	PRC	01 Dec 71	N/A

NO FOREIGN DISSEM/NO DISSEM ABROAD  
 SECRET

SECRET

3

FOREIGN DISSEM/NO DISSEM ABROAD

NAME	FROM	TO	DATE	GROUP
FINCHER, Leta Hong	HK	PRC	12 Oct 71	
	PRC	HK	13 Nov 71	N/A
FONG, Albert	PRC	HK	16 Oct 71	N/A
FONG, Lai Ho	HK	PRC	22 Dec 71	N/A
FRANK, Richard Cyril	PRC	HK	22 Oct 71	N/A
FRANK, Susan Warren	PRC	HK	31 Oct 71	N/A
FRISCH, Marilyn	HK	PRC	20 Oct 71	
	PRC	HK	27 Oct 71	N/A
FRISCH, Saul	HK	PRC	20 Oct 71	
	PRC	HK	27 Oct 71	N/A
FRISCH, Tamar	PRC	HK	20 Oct 71	N/A
GALUISO, Mary Jane	HK	PRC	13 Dec 71	B-3
GAMAN, Pearl S.	HK	PRC	13 Dec 71	B-3
GEE, George Hung	HK	PRC	24 Oct 71	
	PRC	HK	30 Oct 71	N/A
GIN, Hoo	HK	PRC	18 Dec 71	N/A
GOLDBERG, Miriam	HK	PRC	20 Oct 71	
	PRC	HK	31 Oct 71	N/A
GOLDMAN, Edward Michael	HK	PRC	13 Dec 71	B-3
GRANICH, Grace	PRC	HK	19 Nov 71	N/A
GRANICH, Max	PRC	HK	19 Nov 71	N/A
GREENBERG, Mary Louise	PRC	HK	31 Oct 71	B-2
GUEN, Geng Lee Jin	HK	PRC	26 Nov 71	
	PRC	HK	17 Dec 71	N/A
GUEN, Lim Shee	HK	PRC	26 Nov 71	
	PRC	HK	17 Dec 71	N/A
GUINTO, Marie Martin	HK	PRC	13 Dec 71	B-3
HARBERT, Mary Ann	PRC	HK	13 Dec 71	N/A
HAWKINS, John Noel	HK	PRC	11 Dec 71	N/A

NO FOREIGN DISSEM/NO DISSEM ABROAD

SECRET