

REAR F. 2222

PRIORITY MEXI WAVE

RYBA TYPIC KEYWAY VASLOUCH  
NO NIGHT ACTION  
REF MEXI 7999 (CX 72499)

88848

INDICATORS

1 AFTER DOCTORS CASE RECOVERED FROM CUSTOMS REQUEST MEXI  
INVENTORY HIDDEN COMPARTMENT CONTENTS WHICH SHOULD CONSIST:

ONE BT-48 NUMBER 117

ONE BR-48 NUMBER 117

ONE KE-8B NUMBER 2109

ONE CO/C-8 NUMBER 1059

TWO CA-3B NUMBER 2181 AND 2182

ONE RR-48A NUMBER 1024

EXTERNAL CRYSTALS 3203, 3470, 4120, 4670, 5760, 6227, 6250 AND 8003

ONE MAGNIFYING GLASS

ONE AN-58 ANTENNA WITH TUNER (NO SERIAL NUMBER)

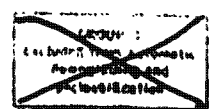
ONE MEDIUM SPEED SIGNAL PLAN FALNOF (WITHOUT ECP AND  
BROADCAST) WITH THIRTY FIELD CRYSTALS

RELEASING OFFICER

12-16

COORDINATING OFFICERS

~~SECRET~~



AUTHORIZING OFFICER

REPRODUCTION BY OTHER THAN THE ISSUING OFFICE IS PROHIBITED.

Copy No.

UNIT	CLASSIFICATION	DATE
TO	FROM	CONF
PAGE TWO		

INFO

CITE BR

*88858*

FIVE AP PADS 1092, 1093, 1094, 1095 AND 1096 (FOR USE OWVI.)

FIVE ER PADS 880 EUVYY, 881 HMPFB, 882 BKLIK, 883 ILBLN AND  
884 RFIEM

IF ALL ITEMS STILL THERE AND APPEAR NOT HAVE BEEN DISTURBED  
(PARTICULARLY CRYPTO MATERIALS) PLS STRIVE REPAIR CASE IN SUCH  
MANNER REASONABLY ASSURE NO REPETITION THIS PROBLEM AND CONVINC  
VASLOUCH 2 TAKE BAG REPAIRS

2. HQS MOST ANXIOUS HAVE THIS RS-46 IN PLACE SOONEST. REQUEST  
MEXI DO UTMOST ALLAY VASLOUCH 2 TREPIDATION.

3. IF STATION UNABLE MAKE SATISFACTORY REPAIRS, RETURN CASE  
AND CONTENTS TO HQS. ~~REPAIR CASE~~ <sup>REPAIRED AND</sup> VASLOUCH 2

REFUSES TAKE. RETAIN MEXI. END OF MESSAGE.

*facis/EDS* *E. J. ...*

CISAS/MOB *...*

*...*

*...*

*...*

*...*