

SECRET CONTROL
U. S. OFFICIALS ONLY

SC 05-3000

21-652-57

DEC 27 1950

MEMORANDUM FOR: ASSISTANT DIRECTOR FOR POLICY COORDINATION

SUBJECT: Relations Existing Between the Bulgarian National Committee and the International Rescue Committee

Dr. George M. Dimitrov NOT SUITABLE FOR MICROFILM

1. A generally reliable source, who is not Bulgarian, has characterized the International Rescue Committee as a private organization created to render assistance to the victims of the recent war and of Communism. Since IRO was to cease its activities on 30 June 1950, the International Rescue Committee hoped to carry on at least a portion of the relief work undertaken by the organization among refugees who had been declared ineligible for emigration overseas. The activities of the International Rescue Committee have suffered, however, because of failure to raise the necessary funds in the United States.

2. According to source, the International Rescue Committee, unlike the IRO, pursues a well-defined political objective, namely to unite in a single organization under United States patronage all democratic and anti-Communist refugees fleeing from the Soviet satellites. Source declares that the leaders of the International Refugee Committee consider as truly democratic only those refugees belonging to the peasant parties of Eastern Europe. Full support is given to these parties, or rather to their leaders such as Nikola Jeyk for the Poles and (Dr.) George M. Dimitrov for the Bulgarians. Assistance is denied to Fascists, former Fascists and individuals who have profited under Communism in their home countries. In the opinion of source, apart from the fact that it is not necessary to hold membership in a peasant party in order to be a true democrat, officials of the International Refugee Committee apparently wish to forget that Dr. Dimitrov is either unpopular or actually hated by large segments of the Bulgarian emigration. The supporters of Dimitrov are merely guests at the Jesi camp. Of the 163 Bulgarian emigres at this camp, 150 belong to the Bulgarian Agrarian Party. Bulgarian refugees in other Italian camps and in unspecified camps in Germany, Austria and Switzerland are described as distinctly hostile to Dimitrov. The Bulgarian committee in France, headed by Nikola Belabanov, enlists support for Dr. Dimitrov among Bulgarian emigres in that country.

3. On 13 March 1950, CARE packages were distributed to the 163 Bulgarian refugees at the Jesi camp, under the auspices of the International Rescue Committee. (Mrs. Edna) Feder, the wife of a Swiss

SECRET CONTROL

21-652-57

RECEIVED ON 11/15/50

RECEIVED ON 11/15/50

U. S. OFFICIALS ONLY

and director of the orphanage of the International Refugee
at Montecompatri, distributed the CARE packages. This
according to source, was designed to show the esteem in
Cicotron was held by the United States Government and to
the influence that he exerts. Others present at the
in of the CARE packages were Nikola Balabanov, who had
Paris for the occasion, Ivan Kary from Rome, Mr. and Mrs.
United States citizens who presented CARE; Daniel Gilmore,
agent; George Walker, AP correspondent; the Brias husband
er, and Angelica Balabanov. The presence of Mrs. Balabanov,
from curiosity, had no political implications.

RECORD COPY TORN

ROBERT A. SCHOW
Assistant Director
Special Operations

11 1950

RECEIVED ON 11/15/50

50-515

Journal of Management Studies, 19(6), 701-718.

SECRET
ALL INFORMATION CONTAINED HEREIN IS UNCLASSIFIED EXCEPT WHERE SHOWN OTHERWISE

DATE 08-19-2016 BY SP-7 JLR/SJS

REASON FOR DECLASSIFICATION: EXECUTIVE ORDER 13526, PARAGRAPH 1(a)

APPROVING OFFICIAL: [Signature]

DATE OF REVIEW: 08-19-2016

COMMENTS:

SALON 8570
20 Sep '55

11

5A16-8541
20 Sep 55

DIR-47362

CLASSIFIED MESSAGE

ORIG: [] 655

UNIT: P/5

EXT: []

DATE: (29 JANUARY 1967)

TO: [] SAIGON, []

FROM: DIRECTOR

CONF: FE 7

INFO: COP, A/CO/P/P, CI, CI/OPS, CI/IC, FI/RI 2, PP 2, PP/OPS, FI/IC 2, SR 3, S/- 2

REC'D CABLE SECT.

49362

DOC MICRO. SER.

SEP 11 1965

DOC MICRO. SER.

TO: [] SAIG, []

MICROFILMED

JUN 8 1965

DOC MICRO. SER.

PETCH HAIUAR
BOGA MESSAGE

1. [] ASSETS ORGANIZING TURESTIAN LIBERATION COUNCIL WHICH RECEIVE OFFICIAL RECOGNITION INDOH 25 JAN. PURPOSE ORGANIZE MOVEMENT DEDICATED COMPELHINO RUSSIAN DOMINATION CENTRAL ASIAN PEOPLES IN EFFORT IDENTIFY SAME IN MINDS ASIANS WITH SOVIET EXPLOITATION HENRIARY. ALSO PROVIDE MECHANISM EDUCATE INDOHS DANGERS CP INDOH.

2. TO SURFACE EXISTANCE ORG.. COUNCIL ^{To} OVERTLY CONTACT SIMILAR ANTI-COMMUNIST ORGS PAR AND MIDDLE EAST AREAS REQUESTING ANTI-COMMUNIST MATERIALS PUBLISHED BY ORG BE SENT DJAK FOR PUBLICATION AND REPLAY. HQS PROVIDING LIST OF SUCH ORGS DJAK. DO CONTACT ORGS BY STATION DESIRED FOR SECURITY REASONS, BUT IF COUNCIL STORY SURFACES OVERTLY YOUR AREA REQUEST EXPLOIT FULLEST.

3. SHOULD ORGS LISTED FROM YOUR AREA BE UNSUITABLE FOR ANY REASON ADVISE [] NOT USE; WOULD ALSO APPRECIATE NAMES, ADDRESSES OTHER ORGS SUITABLE ABOVE OPERATIONS. FOLLOWING NAMES SENT []

A. [] PHILIPPINE MUSLIM ASSOCIATION; ANTI COMMUNIST LEAGUE OF PHILIPPINES.

COORDINATING OFFICERS

23 9 24 4

ALFRED C. ULLER, JR.
CHIEF, FAR EAST DIVISION

1957
JAN 7 1957
DIRECTOR

122 100000 (IN CODES)

100000

1. ASSESS POTENTIAL OF OPERATION REVENUE. WITH AN AGED RESERVED PARA
STAFF RESERVES AND RESERVE STAFF. STAFF WITH HIGH LEVELS OF TRAINING
REVENUE REVENUE REVENUE. HIGH REVENUE REVENUE OF INITIAL REVENUE. HIGH REVENUE
REVENUE REVENUE REVENUE. REVENUE REVENUE REVENUE REVENUE REVENUE REVENUE
LOCATED SPAN, WITHIN, WITHIN AND WITHIN REVENUE REVENUE REVENUE REVENUE
PROBLEMS CENTRAL AGA REVENUE. REVENUE REVENUE REVENUE REVENUE REVENUE
REVENUE REVENUE REVENUE REVENUE REVENUE REVENUE REVENUE REVENUE
REVENUE REVENUE REVENUE REVENUE REVENUE REVENUE REVENUE REVENUE

2. CROSS REVENUE REVENUE REVENUE REVENUE REVENUE REVENUE REVENUE
3. REVENUE REVENUE REVENUE REVENUE REVENUE REVENUE REVENUE REVENUE
4. REVENUE REVENUE REVENUE REVENUE REVENUE REVENUE REVENUE REVENUE
REVENUE REVENUE REVENUE REVENUE REVENUE REVENUE REVENUE REVENUE

1. REVENUE REVENUE REVENUE REVENUE REVENUE REVENUE REVENUE REVENUE
REVENUE REVENUE REVENUE REVENUE REVENUE REVENUE REVENUE REVENUE
REVENUE REVENUE REVENUE REVENUE REVENUE REVENUE REVENUE REVENUE

DIR 49364
23 Jan 57

TO
FROM
CONF

10-1-57

DIRECTOR

242 3

PAGE TWO

1. DATE _____

3. DR. JAMES EARL RAY
FIVE FIVE THREE SIX TWO
AGENCY, MOBILE

1. The first step in the process is to identify the problem or issue that needs to be addressed. This involves gathering information and understanding the context of the problem.

[illegible]

7-10

2000 2001 2002 2003 2004 2005 2006 2007 2008 2009 2010 2011 2012 2013 2014 2015 2016 2017 2018 2019 2020 2021 2022 2023 2024 2025 2026 2027 2028 2029 2030 2031 2032 2033 2034 2035 2036 2037 2038 2039 2040 2041 2042 2043 2044 2045 2046 2047 2048 2049 2050 2051 2052 2053 2054 2055 2056 2057 2058 2059 2060 2061 2062 2063 2064 2065 2066 2067 2068 2069 2070 2071 2072 2073 2074 2075 2076 2077 2078 2079 2080 2081 2082 2083 2084 2085 2086 2087 2088 2089 2090 2091 2092 2093 2094 2095 2096 2097 2098 2099 2100 2101 2102 2103 2104 2105 2106 2107 2108 2109 2110 2111 2112 2113 2114 2115 2116 2117 2118 2119 2120 2121 2122 2123 2124 2125 2126 2127 2128 2129 2130 2131 2132 2133 2134 2135 2136 2137 2138 2139 2140 2141 2142 2143 2144 2145 2146 2147 2148 2149 2150 2151 2152 2153 2154 2155 2156 2157 2158 2159 2160 2161 2162 2163 2164 2165 2166 2167 2168 2169 2170 2171 2172 2173 2174 2175 2176 2177 2178 2179 2180 2181 2182 2183 2184 2185 2186 2187 2188 2189 2190 2191 2192 2193 2194 2195 2196 2197 2198 2199 2200 2201 2202 2203 2204 2205 2206 2207 2208 2209 2210 2211 2212 2213 2214 2215 2216 2217 2218 2219 2220 2221 2222 2223 2224 2225 2226 2227 2228 2229 2230 2231 2232 2233 2234 2235 2236 2237 2238 2239 2240 2241 2242 2243 2244 2245 2246 2247 2248 2249 2250 2251 2252 2253 2254 2255 2256 2257 2258 2259 2260 2261 2262 2263 2264 2265 2266 2267 2268 2269 2270 2271 2272 2273 2274 2275 2276 2277 2278 2279 2280 2281 2282 2283 2284 2285 2286 2287 2288 2289 2290 2291 2292 2293 2294 2295 2296 2297 2298 2299 2300 2301 2302 2303 2304 2305 2306 2307 2308 2309 2310 2311 2312 2313 2314 2315 2316 2317 2318 2319 2320 2321 2322 2323 2324 2325 2326 2327 2328 2329 2330 2331 2332 2333 2334 2335 2336 2337 2338 2339 2340 2341 2342 2343 2344 2345 2346 2347 2348 2349 2350 2351 2352 2353 2354 2355 2356 2357 2358 2359 2360 2361 2362 2363 2364 2365 2366 2367 2368 2369 2370 2371 2372 2373 2374 2375 2376 2377 2378 2379 2380 2381 2382 2383 2384 2385 2386 2387 2388 2389 2390 2391 2392 2393 2394 2395 2396 2397 2398 2399 2400 2401 2402 2403 2404 2405 2406 2407 2408 2409 2410 2411 2412 2413 2414 2415 2416 2417 2418 2419 2420 2421 2422 2423 2424 2425 2426 2427 2428 2429 2430 2431 2432 2433 2434 2435 2436 2437 2438 2439 2440 2441 2442 2443 2444 2445 2446 2447 2448 2449 2450 2451 2452 2453 2454 2455 2456 2457 2458 2459 2460 2461 2462 2463 2464 2465 2466 2467 2468 2469 2470 2471 2472 2473 2474 2475 2476 2477 2478 2479 2480 2481 2482 2483 2484 2485 2486 2487 2488 2489 2490 2491 2492 2493 2494 2495 2496 2497 2498 2499 2500 2501 2502 2503 2504 2505 2506 2507 2508 2509 2510 2511 2512 2513 2514 2515 2516 2517 2518 2519 2520 2521 2522 2523 2524 2525 2526 2527 2528 2529 2530 2531 2532 2533 2534 2535 2536 2537 2538 2539 2540 2541 2542 2543 2544 2545 2546 2547 2548 2549 2550 2551 2552 2553 2554 2555 2556 2557 2558 2559 2560 2561 2562 2563 2564 2565 2566 2567 2568 2569 2570 2571 2572 2573 2574 2575 2576 2577 2578 2579 2580 2581 2582 2583 2584 2585 2586 2587 2588 2589 2590 2591 2592 2593 2594 2595 2596 2597 2598 2599 2600 2601 2602 2603 2604 2605 2606 2607 2608 2609 2610 2611 2612 2613 2614 2615 2616 2617 2618 2619 2620 2621 2622 2623 2624 2625 2626 2627 2628 2629 2630 2631 2632 2633 2634 2635 2636 2637 2638 2639 2640 2641 2642 2643 2644 2645 2646 2647 2648 2649 2650 2651 2652 2653 2654 2655 2656 2657 2658 2659 2660 2661 2662 2663 2664 2665 2666 2667 2668 2669 2670 2671 2672 2673 2674 2675 2676 2677 2678 2679 2680 2681 2682 2683 2684 2685 2686 2687 2688 2689 2690 2691 2692 2693 2694 2695 2696 2697 2698 2699 2700 2701 2702 2703 2704 2705 2706 2707 2708 2709 2710 2711 2712 2713 2714 2715 2716 2717 2718 2719 2720 2721 2722 2723 2724 2725 2726 2727 2728 2729 2730 2731 2732 2733 2734 2735 2736 2737 2738 2739 2740 2741 2742 2743 2744 2745 2746 2747 2748 2749 2750 2751 2752 2753 2754 2755 2756 2757 2758 2759 2760 2761 2762 2763 2764 2765 2766 2767 2768 2769 2770 2771 2772 2773 2774 2775 2776 2777 2778 2779 2780 2781 2782 2783 2784 2785 2786 2787 2788 2789 2790 2791 2792 2793 2794 2795 2796 2797 2798 2799 2800 2801 2802 2803 2804 2805 2806 2807 2808 2809 2810 2811 2812 2813 2814 2815 2816 2817 2818

... ..

1. *Staphylococcus aureus* (ATCC 12228) was grown in tryptic soy broth (TSB) (Difco) supplemented with 0.5% yeast extract (Difco) and 0.5% glucose (Difco) at 37°C. Cells were harvested at mid-log phase (OD₆₀₀ = 0.5) and washed with phosphate buffered saline (PBS) (pH 7.4) containing 0.1% bovine serum albumin (BSA) (Sigma). Cells were then resuspended in PBS containing 0.1% BSA and 0.1% penicillin (100 U/ml) (Sigma).

[illegible]

The following table shows the results of the analysis of variance for the effect of the type of soil on the growth of the plants. The results are given in terms of the mean height of the plants in centimeters.

4. 22. 2000. 14. 07. 2000. 20. 07. 2000.

1. The first step in the process is to identify the problem or issue that needs to be addressed. This involves gathering information and understanding the context of the problem.

Journal of Management Studies, 1986, 23(1), 7-10.

5. THE STATE OF TEXAS, County of EL PASO, do hereby certify that the foregoing is a true and correct copy of the original as the same appears in the records of the County Clerk of said County.

Table 1

Variable	Mean	SD	Range
Age	60.7	8.9	45-78
Gender			
Male	10		
Female	10		
Marital status			
Married	10		
Single	10		
Widowed	10		
Divorced	10		
Educational level			
High school or less	10		
Bachelor's degree	10		
Master's degree	10		
PhD	10		
Occupation			
Retired	10		
Professional	10		
Managerial	10		
Technical	10		
Clerical	10		
Unemployed	10		
Health status			
Excellent	10		
Good	10		
Fair	10		
Poor	10		

[illegible]

1. *Chlorophyll a* and *Chlorophyll b* were determined by the method of Lichtenthaler and Sponholz (1980). The total chlorophyll content was determined by the method of Arar and Cook (1980). The carotenoid content was determined by the method of Lichtenthaler and Sponholz (1980). The total carotenoid content was determined by the method of Arar and Cook (1980). The total protein content was determined by the method of Lowry et al. (1951). The total lipid content was determined by the method of Bligh and Dyer (1959). The total carbohydrate content was determined by the method of Dubois and Gilles (1950). The total nucleic acid content was determined by the method of Burton (1956). The total ash content was determined by the method of AOAC (1990). The total moisture content was determined by the method of AOAC (1990). The total dry matter content was determined by the method of AOAC (1990). The total organic acid content was determined by the method of AOAC (1990). The total alkaloid content was determined by the method of AOAC (1990). The total flavonoid content was determined by the method of AOAC (1990). The total phenol content was determined by the method of AOAC (1990). The total tannin content was determined by the method of AOAC (1990). The total saponin content was determined by the method of AOAC (1990). The total sterol content was determined by the method of AOAC (1990). The total glycoside content was determined by the method of AOAC (1990). The total alkaloid content was determined by the method of AOAC (1990). The total flavonoid content was determined by the method of AOAC (1990). The total phenol content was determined by the method of AOAC (1990). The total tannin content was determined by the method of AOAC (1990). The total saponin content was determined by the method of AOAC (1990). The total sterol content was determined by the method of AOAC (1990). The total glycoside content was determined by the method of AOAC (1990).

(continued)

$$\frac{1}{2} \left(\frac{1}{2} \right) = \frac{1}{4} \quad \frac{1}{2} \left(\frac{1}{2} \right) = \frac{1}{4} \quad \frac{1}{2} \left(\frac{1}{2} \right) = \frac{1}{4} \quad \frac{1}{2} \left(\frac{1}{2} \right) = \frac{1}{4} \quad \frac{1}{2} \left(\frac{1}{2} \right) = \frac{1}{4}$$

TO
FROM
SUB
INFO
REF

DIRECTOR

PAGE 3

6. AFFILIATED WITH INTERNATIONAL LABOUR ORGANIZATION (ILO) AS

(1917)

DR. CARL SCHUBERT
700 BROADWAY
NEW YORK, CITY

7. AFFILIATED WITH SYNDICAL NATIONAL COUNCIL, AND THIS NAME TO ALEXIS

1. DR. CARL SCHUBERT

CHIEF OF BUREAU NO 27
STATION, NEW YORK

2. CARL SCHUBERT

CHIEF OF BUREAU NO 27
STATION, NEW YORK

3. CARL SCHUBERT

CHIEF OF BUREAU NO 27
STATION, NEW YORK

14-00000
TO
FROM
SUBJECT

PAGE 3

PRIORITY

MEMORANDUM FOR

THE PRESIDENT

AND VICE PRESIDENT

AND SENATE LEADERS

RE: [illegible]

DATE: [illegible]

BY: [illegible]

1. [illegible]

2. [illegible]

3. [illegible]

4. [illegible]

5. [illegible]

6. [illegible]

7. [illegible]

231.

82

252

234

1945-46

2400

21233

2000

3. 4. 5.

2000

1. IN ADDITIONAL, VARIOUS PLACES:

101 000000 70 50

1. The first part of the document is a list of names and titles, including "The Hon. Mr. Justice" and "The Hon. Mr. Justice".

2. 225-11

ANALYSIS OF THE DATA

1997, 1998, 1999, 2000, 2001, 2002, 2003, 2004, 2005, 2006, 2007, 2008, 2009, 2010, 2011, 2012, 2013, 2014, 2015, 2016, 2017, 2018, 2019, 2020, 2021, 2022, 2023, 2024, 2025, 2026, 2027, 2028, 2029, 2030, 2031, 2032, 2033, 2034, 2035, 2036, 2037, 2038, 2039, 2040, 2041, 2042, 2043, 2044, 2045, 2046, 2047, 2048, 2049, 2050, 2051, 2052, 2053, 2054, 2055, 2056, 2057, 2058, 2059, 2060, 2061, 2062, 2063, 2064, 2065, 2066, 2067, 2068, 2069, 2070, 2071, 2072, 2073, 2074, 2075, 2076, 2077, 2078, 2079, 2080, 2081, 2082, 2083, 2084, 2085, 2086, 2087, 2088, 2089, 2090, 2091, 2092, 2093, 2094, 2095, 2096, 2097, 2098, 2099, 2100, 2101, 2102, 2103, 2104, 2105, 2106, 2107, 2108, 2109, 2110, 2111, 2112, 2113, 2114, 2115, 2116, 2117, 2118, 2119, 2120, 2121, 2122, 2123, 2124, 2125, 2126, 2127, 2128, 2129, 2130, 2131, 2132, 2133, 2134, 2135, 2136, 2137, 2138, 2139, 2140, 2141, 2142, 2143, 2144, 2145, 2146, 2147, 2148, 2149, 2150, 2151, 2152, 2153, 2154, 2155, 2156, 2157, 2158, 2159, 2160, 2161, 2162, 2163, 2164, 2165, 2166, 2167, 2168, 2169, 2170, 2171, 2172, 2173, 2174, 2175, 2176, 2177, 2178, 2179, 2180, 2181, 2182, 2183, 2184, 2185, 2186, 2187, 2188, 2189, 2190, 2191, 2192, 2193, 2194, 2195, 2196, 2197, 2198, 2199, 2200, 2201, 2202, 2203, 2204, 2205, 2206, 2207, 2208, 2209, 2210, 2211, 2212, 2213, 2214, 2215, 2216, 2217, 2218, 2219, 2220, 2221, 2222, 2223, 2224, 2225, 2226, 2227, 2228, 2229, 2230, 2231, 2232, 2233, 2234, 2235, 2236, 2237, 2238, 2239, 2240, 2241, 2242, 2243, 2244, 2245, 2246, 2247, 2248, 2249, 2250, 2251, 2252, 2253, 2254, 2255, 2256, 2257, 2258, 2259, 2260, 2261, 2262, 2263, 2264, 2265, 2266, 2267, 2268, 2269, 2270, 2271, 2272, 2273, 2274, 2275, 2276, 2277, 2278, 2279, 2280, 2281, 2282, 2283, 2284, 2285, 2286, 2287, 2288, 2289, 2290, 2291, 2292, 2293, 2294, 2295, 2296, 2297, 2298, 2299, 2300, 2301, 2302, 2303, 2304, 2305, 2306, 2307, 2308, 2309, 2310, 2311, 2312, 2313, 2314, 2315, 2316, 2317, 2318, 2319, 2320, 2321, 2322, 2323, 2324, 2325, 2326, 2327, 2328, 2329, 2330, 2331, 2332, 2333, 2334, 2335, 2336, 2337, 2338, 2339, 2340, 2341, 2342, 2343, 2344, 2345, 2346, 2347, 2348, 2349, 2350, 2351, 2352, 2353, 2354, 2355, 2356, 2357, 2358, 2359, 2360, 2361, 2362, 2363, 2364, 2365, 2366, 2367, 2368, 2369, 2370, 2371, 2372, 2373, 2374, 2375, 2376, 2377, 2378, 2379, 2380, 2381, 2382, 2383, 2384, 2385, 2386, 2387, 2388, 2389, 2390, 2391, 2392, 2393, 2394, 2395, 2396, 2397, 2398, 2399, 2400, 2401, 2402, 2403, 2404, 2405, 2406, 2407, 2408, 2409, 2410, 2411, 2412, 2413, 2414, 2415, 2416, 2417, 2418, 2419, 2420, 2421, 2422, 2423, 2424, 2425, 2426, 2427, 2428, 2429, 2430, 2431, 2432, 2433, 2434, 2435, 2436, 2437, 2438, 2439, 2440, 2441, 2442, 2443, 2444, 2445, 2446, 2447, 2448, 2449, 2450, 2451, 2452, 2453, 2454, 2455, 2456, 2457, 2458, 2459, 2460, 2461, 2462, 2463, 2464, 2465, 2466, 2467, 2468, 2469, 2470, 2471, 2472, 2473, 2474, 2475, 2476, 2477, 2478, 2479, 2480, 2481, 2482, 2483, 2484, 2485, 2486, 2487, 2488, 2489, 2490, 2491, 2492, 2493, 2494, 2495, 2496, 2497, 2498, 2499, 2500, 2501, 2502, 2503, 2504, 2505, 2506, 2507, 2508, 2509, 2510, 2511, 2512, 2513, 2514, 2515, 2516, 2517, 2518, 2519, 2520, 2521, 2522, 2523, 2524, 2525, 2526, 2527, 2528, 2529, 2530, 2531, 2532, 2533, 2534, 2535, 2536, 2537, 2538, 2539, 2540, 2541, 2542, 2543, 2544, 2545, 2546, 2547, 2548, 2549, 2550, 2551, 2552, 2553, 2554, 2555, 2556, 2557, 2558, 2559, 2560, 2561, 2562, 2563, 2564, 2565, 2566, 2567, 2568, 2569, 2570, 2571, 2572, 2573, 2574, 2575, 2576, 2577, 2578, 2579, 2580, 2581, 2582, 2583, 2584, 2585, 2586, 2587, 2588, 2589, 2590, 2591, 2592, 2593, 2594, 2595, 2596, 2597, 2598, 2599, 2600, 2601, 2602, 2603, 2604, 2605, 2606, 2607, 2608, 2609, 2610, 2611, 2612, 2613, 2614, 2615, 2616, 2617, 2618, 2619, 2620, 2621, 2622, 2623, 2624, 2625, 2626, 2627, 2628, 2629, 2630, 2631, 2632, 2633, 2634, 2635, 2636, 2637, 2638, 2639, 2640, 2641, 2642, 2643, 2644, 2645, 2646, 2647, 2648, 2649, 2650, 2651, 2652, 2653, 2654, 2655, 2656, 2657, 2658, 2659, 2660, 2661, 2662, 2663, 2664, 2665, 2666, 2667, 2668, 2669, 2670, 2671, 2672, 2673, 2674, 2675, 2676, 2677, 2678, 26

4. IT DOES NOT, HOWEVER, FOLLOW FROM THE FACT THAT THE UNITED STATES HAS A POLICY OF NON-INTERFERENCE IN THE INTERNAL AFFAIRS OF OTHER COUNTRIES, THAT IT HAS NO POLICY OF NON-INTERFERENCE IN THE INTERNAL AFFAIRS OF OTHER COUNTRIES.

SECRET

U.S. OFFICIALS ONLY

CSDB-3074

MAR 1 1955

TO: Department of State
Attention: Mr. A.H. Abajian
Office of Investigations
Refugee Relief Program

FROM: Deputy Director, Plans

SUBJECT: International Rescue Committee (IRC); formerly International
Rescue and Relief Committee (IRRC).

2P

1. Reference is made to the request of Mr. Abajian on 15 December 1954 for information concerning the above named organization and individuals associated with the organization.

2. Dr. Bela GANTAY, a former major in the Royal Hungarian Police, submitted a document to the Department of State charging the IRC and various members of the organization with furthering the interests of Communism under the guise of an anti-Communist relief organization. The files of this office contain no derogatory information on Bela GANTAY. His true name is apparently Dr. Adalbert GANTAY, born 20 March 1910 in Budapest, Hungary. A report of 22 November 1949 indicated that Subject had previously been active for a Western Intelligence group in activities directed against the Soviet Union.

3. According to a report of 30 March 1953, the International Rescue and Relief Committee (IRC) with offices at 103 Park Avenue, New York City and 35 Boulevard des Capucines, Paris, is an outgrowth of the former International Relief Committee and the Emergency Relief Committee. It was formed originally to assist refugees from Nazi Germany. Since 1945 it has functioned as an anti-Fascist organization assisting refugees without regard to nationality. It was stated in the report that the IRRC, though not ostensibly a Communist organization, had several Communists affiliated with it.

4. A reliable source reported on 15 March 1950 that one-third of the budget of the International Rescue Committee for 1948 and 1949 was expended in France in connection with Spaniards in exile, who were considerably penetrated by Communist influence. David MARTIN, described by Source as the principal force within the IRC, was referred to as an ex-Trotskyite of considerable ability and energy.

5. It was stated in a report dated 20 March 1949 from a reliable source that since World War II, the IRC has come under suspicion as a possible

ENC 154

100-100000-44

Communist organization or clever front organization used by Communists for intelligence purposes. It was noted that in the United States and Europe the IRC maintained close contact with anti-Soviet emigre groups.

6. In summary, various allegations have been made against members of the IRC to the effect that they are Marxists, Communists or at least Socialists. None of these proffered opinions can be substantiated; yet, it is plausible that the organization has been penetrated by Communist agents. The degree of control, if any, exercised by them cannot be determined from a review of the available material, nor can it be determined with certainty who in the organization are actually Communists. Attached hereto is available information concerning the following individuals mentioned in GANTAY's report:

Sheba STERNIKY	Mary SALUN
Charles Stornberg	Gen. Gustave HERNIEY
Bohnail HOUSER	Michael KOLOSSOV

Also attached is a report on the American Friends of Russian Freedom.

7. The files of this office contain no information of a derogatory nature concerning the following individuals also mentioned by GANTAY:

Fritz OPEL	Magr. Bela VARGA
Abraham G. BECKER	Pavel GOLLEJAEV
Anna WATSON	Lotte LEFGE
Gisela WASTILJEN	Alida de JAGER
Certral ZERKOWSKI	Mrs. L. DALLIN (Mrs. David DALLIN)
Hans SCHIDEMANN	Robert HILL
Erna LANG	Bella FABIAN
Harry GROSSMAN	

8. For possible additional information concerning the International Rescue Committee you are referred to the Federal Bureau of Investigation.

9. For information concerning Marcel FAUST you are referred to the Department of Army. (Reference: CIC, Salzburg, Austria, EOL, S-4524, dated 31 May 1949.)

10. For information concerning Theophil JILEK, see: Embassy report dated 13 May 1952, Paris, France, subject: Report of Refusal of Visa to Theophil Jilek Under the Act of October 16, 1918, as amended by the Internal Security Act.

CS DB-31771

RI/SC: AMJ/WRR/jp

BASED ON: 201-40480
201-24228 (OPFW - 662)
200-130-2
200-130-2

SECRET

NOT SUITABLE FOR MICROFILM

CS DB - 3177

INSTRUCTIONS: This form will be used when requesting transfer of, addition of, and/or withdrawal of listed documents from RT files. Separate forms will be used for each name submitted. No additional routing sheet is required.

[illegible]

NOT SUITABLE FOR MICROFILM

Enc 1 to
CSDB - 31771

100-1-100-1
100-1-100-1

100-1-100-1
100-1-100-1

100-1-100-1
100-1-100-1

100-1-100-1
100-1-100-1

200-1-100-1
200-1-100-1

100-1-100-1
100-1-100-1

201-4-100-1
201-4-100-1

IRRC
201-10385-2
201-10385-2

201-10385-2
201-10385-2

32-4-9-52

200-130-3
200-130-3

71-130-2-1

71-130-2-2

100-1-100-1
100-1-100-1

201-24228-1
201-24228-1

201-24228-1
201-24228-1

201-24228-1
201-24228-1

201-24228-1
201-24228-1

201-4-100-1
201-4-100-1

201-4-100-1
201-4-100-1

201-4-100-1
201-4-100-1

201-4-100-1
201-4-100-1

201-4-100-1
201-4-100-1

201-4-100-1
201-4-100-1

201-4-100-1
201-4-100-1

201-4-100-1
201-4-100-1

201-4-100-1
201-4-100-1

201-4-100-1
201-4-100-1

201-4-100-1
201-4-100-1

201-4-100-1
201-4-100-1

201-4-100-1
201-4-100-1

201-4-100-1
201-4-100-1

201-4-100-1
201-4-100-1

201-4-100-1
201-4-100-1

201-4-100-1
201-4-100-1

201-4-100-1
201-4-100-1

201-4-100-1
201-4-100-1

201-4-100-1
201-4-100-1

WFPW-5929
201-4363-7

201-24228-6
100-1-100-1

International Refugee Committee
201-129-1
3 Aug 51

201-129-1
201-129-1

201-129-1
201-129-1

201-129-1
201-129-1

201-129-1
201-129-1

201-129-1
201-129-1

201-129-1
201-129-1

I R C

~~100-110-4~~ 110
26 Feb 51~~100-110-4~~~~HYPER-17041 N.D.~~~~Call~~

900-130-2 - Reustol. Clift.

~~not all over. But could be the way~~

200-130-2

~~200-130-2~~ 9 Bulb~~200-130-2~~~~200-130-2~~

on Charles in

~~200-130-2~~
1942 49

Jenna - Vango.

15 Feb 51

67-4-3-170

OST-124

up 15

156

900-130-2

N U

Let Green 40

Internal Affairs

~~74-128-1~~

~~74-128-1~~ N.D.

~~200-130-2~~

~~172-50~~ N.D.

~~200-130-2~~

~~172-50~~ N.D.

~~74-128-1~~

~~74-128-1~~

~~200-130-2~~

~~172-50~~ N.D.

~~200-130-2~~

~~172-50~~ N.D.

Internal Affairs
Committee

~~74-128-1~~ N.D.

~~74-128-1~~

Internal Affairs

Peace Committee

201-647-8

W.F.W. 12338

~~74-128-1~~ N.D.

~~74-128-1~~ N.D.

~~200-130-2~~ Ending 41

~~200-130-2~~ via funds

~~200-130-2~~ 200-130-2

~~200-130-2~~ 200-130-2

~~200-130-2~~ N.D.

Internal Affairs

~~74-128-1~~

~~74-128-1~~

201-647-8

200-130-2

W.F.W. 12338

~~74-128-1~~ N.D.

~~74-128-1~~ 70-128-1

~~200-130-2~~

~~200-130-2~~ 200-130-2

~~200-130-2~~

~~200-130-2~~

~~Intercontinental~~

~~32-6-47-143~~ N.D.

32-6-47-143
EG 31403

~~100-2-5-2003~~ N.D.

~~32-6-47-143~~ N.D.

NO. 2 97 307 B. 1
-0000 293034
Engels 3-26

~~200-7-11-17~~ N.D.

~~200-7-11-17~~ N.D.

~~201-6-2-30~~ N.D.

~~100-2-5-2003~~ N.D.
Ref. to
Keweenaw
Island
ref. to 100-2-5-2003

~~200-7-11-17~~ N.D.

~~200-7-11-17~~ N.D.

~~200-7-11-17~~ N.D.

~~100-2-5-2003~~ N.D.

Venezuela
17.11.10

~~32-6-47-143~~ N.D.

~~32-6-47-143~~ N.D.

~~32-6-47-143~~ N.D.

~~71-30-5~~ -4

~~32-6-47-143~~ N.D.

~~32-6-47-143~~ N.D.

~~32-6-47-143~~ N.D.

~~200-7-11-17~~ N.D.

~~32-6-47-143~~ N.D.

~~32-6-47-143~~ N.D.

~~32-6-47-143~~ N.D.

~~32-6-47-143~~ N.D.

~~32-6-47-143~~ N.D.

~~32-6-47-143~~ N.D.

~~32-6-47-143~~ N.D.

~~32-6-47-143~~ N.D.

~~32-6-47-143~~ N.D.

~~32-6-47-143~~ N.D.

~~32-6-47-143~~ N.D.

~~32-6-47-143~~ N.D.

SECRET
(When filled in)

INSTRUCTIONS: This form will be used when requesting a search of RI indices, and/or withdrawal of listed documents from RI files. Separate forms will be used for each name submitted. No additional routing sheet is required.

NAME CHECK AND/OR DOCUMENT REQUEST SERVICE

DATE

75 Dec 56

FROM:

St. C. - Jane Roman - for State

DIVISION

ROOM NO.

TELEPHONE

TO:	ROOM NO.	DATE		INITIALS	ACTION DESIRED (Check one)
		RECEIVED	FORWARDED		
RI SERVICE SECTION	1001 L				<input type="checkbox"/> LIST REFERENCE AND RETURN THIS FORM TO REQUESTER.
					<input type="checkbox"/> LIST REFERENCES AND SEND DOCUMENTS TO REQUESTER.
					<input type="checkbox"/> SEND LISTED DOCUMENTS TO REQUESTER.
RI FILES SECTION	1400 L				<input type="checkbox"/> LIST STATION SYMBOL NUMBER OF REFERENCES AND RETURN THIS FORM.
	OPEL ✓		✓		<input type="checkbox"/> SEND RI ARCHIVES DOCUMENTS TO REQUESTER.
	OPELL ✓		EPALL ✓		<input type="checkbox"/> TELEPHONE REPLY.
	OPELLE ✓		EPALL ✓		

PERSONAL DATA

NAME (Last)

(Type

or print)

OPEL, Fred (Fritz)

(First)

(Middle)

TITLE

ALIASES AND SPELLING VARIATIONS

Former director of Internat'l Rescue Committee (which operates in W. Germany & W. Europe).

DATE OF BIRTH

OTHER IDENTIFYING DATA

☐ NOT IDENTIFIABLE

Probably not to be confused with the German automobile magnate.

REFERENCES

OPEL, FNU (NP11)	NY-CEO-ORF-INT-47 (NP11)	74-6-14-264 (DI)
OPEL (OBSTURFHUEK) (NP11)	GEORGE OFFICE (NP11)	(transmitted)
OPEL, FRITZ (NP11)	D-7, IN 696 (NP11)	74-6-34-1-151 (NP11)
OPEL, FRITZ (SECURITY) (1980) 6459	29102 12/20/43 (NP11)	54-7-7 (NP11)
OPEL (OCCASION)	XX 61998 2/2/45 (NP11)	32-6-2-7304 ✓
Archives - - -	201-22821 (FBI-10)	32-7-0-1422 (NP11)
5X-34 NOT AVAILABLE LONDON 12/20/43	200-7-213-1 (NP11)	32-7-0-2005 (NP11)
20637-410 NOT AVAILABLE 4/4/44	200-5-11-1 (NP11)	32-7-5-419 (NP11)
XX/5154 (NP11)	100-2-11-487 (DI)	517-M4
NEW YORK - SERV-PERS-1-1943 (N.D.)	74-6-13-1654 (N.D.)	
SAN KOZLIK Project NEW YORK (N.D.)		
NEW YORK - Doc. 55036 (NP11)		
STANBY Doc. 55145 (NP11)		

FORM NO. 51-119 PREVIOUS EDITION MAY BE USED.

SECRET

m. h. h. h. h. h.

(OVEL)

(43)

SEALS

32-7-5-100	(NMI)
32-7-5-103	(NMI)
32-7-0-188 TS CIA	SEC 922 C-641/100-CCO-SJA-15
32-124-3/24	(NMI)
32-124-3/31	(NMI)
ESB-A-K480	(NMI) (CONVOS)

REFERENCES - CONTINUED

SECRET

(OVER)

SECRET
(When filled in)

INSTRUCTIONS: This form will be used when requesting a search of RI indices, and/or withdrawal of listed documents from RI files. Separate forms will be used for each name submitted. No additional routing sheet is required.				
NAME CHECK AND/OR DOCUMENT REQUEST SERVICE				DATE 15 Dec 54
FROM: STC - Jane Roman - for State		DIVISION		ROOM NO.
TELEPHONE				
TO:	ROOM NO.	DATE		INITIALS
		RECEIVED	FORWARDED	
RI SERVICE SECTION	1001 L			
RI FILES SECTION	1400 L			
ACTION DESIRED (Check one)				
<input type="checkbox"/> LIST REFERENCE AND RETURN THIS FORM TO REQUESTER.				
<input type="checkbox"/> LIST REFERENCES AND SEND DOCUMENTS TO REQUESTER.				
<input type="checkbox"/> SEND LISTED DOCUMENTS TO REQUESTER.				
<input type="checkbox"/> LIST STATION SYMBOL NUMBER OF REFERENCES AND RETURN THIS FORM.				
<input type="checkbox"/> SEND RI ARCHIVES DOCUMENTS TO REQUESTER.				
<input type="checkbox"/> TELEPHONE REPLY.				
PERSONAL DATA				
NAME (Last)		(First)		(Middle)
(Type or print) VARGA, Bella (Magr.)				TITLE
ALIASES AND SPELLING VARIATIONS				
Of Hungarian extraction. On board of Directors of International Rescue Committee. Pres. of Hung. Nat'l Council. Due to fact this is a <input type="checkbox"/> NOT IDENTIFIABLE common name, we had best look for only positive identis. on this one.				
REFERENCES				
Search was made. No info.				
Hung. Nat'l Council				
27 Dec 54				
EHX				

2
SECRET
(When filled in)

INSTRUCTIONS: This form will be used when requesting a search of RI indices, and/or withdrawal of listed documents from RI files. Separate forms will be used for each name submitted. No additional routing sheet is required.					
NAME CHECK AND/OR DOCUMENT REQUEST SERVICE					DATE
FROM: <i>C. Nagle</i>		DIVISION		ROOM NO.	TELEPHONE <i>2117</i>
TO:	ROOM NO.	DATE		INITIALS	ACTION DESIRED (Check one)
RI SERVICE SECTION	1001 L	RECEIVED	FORWARDED		<input type="checkbox"/> LIST REFERENCE AND RETURN THIS FORM TO REQUESTER.
					<input type="checkbox"/> LIST REFERENCES AND SEND DOCUMENTS TO REQUESTER.
RI FILES SECTION	1400 L				<input type="checkbox"/> SEND LISTED DOCUMENTS TO REQUESTER.
					<input type="checkbox"/> LIST STATION SYMBOL NUMBER OF REFERENCES AND RETURN THIS FORM.
					<input type="checkbox"/> SEND RI ARCHIVES DOCUMENTS TO REQUESTER.
					<input type="checkbox"/> TELEPHONE REPLY.
PERSONAL DATA NAME (Last) <i>VARGA</i> (First) <i>Bela</i> (Middle) <i>Peter</i> TITLE _____ (Type or print) <i>VARGA</i> ALIASES AND SPELLING VARIATIONS _____					
DATE OF BIRTH		OTHER IDENTIFYING DATA <input type="checkbox"/> NOT IDENTIFIABLE			
REFERENCES					
200-7-3-1 (IF #712) ND		VARGA, Bela (Pastor) ND		43-5-0-1 (PIT-915) pg. 11 Att. 2 ND	
100-7-1-3 (Encl. No. 2) ND		200-7-7-65 (AK-100) ND		VARGA, Bela ND	
100-5-5-69 (DTS 18287) enc. 1 ND		200-5-34-31-2 ND		ZODIAC (MORRIS IAN DES) ND	
38-6-2-490 (FBI-674) ND		38-120-24 (5 Dec 49) ND		100-2-13-49 ND	
32-6-6-100 (ELI-9364) ND		Memo T.S. 5472 ND		201-1-1-660 Form 1985 Gyr County ND	
60-7-1-25 ND		43-5-16-27 (p. 10) ND		201-1-1-660 ND	
43-8-16-175 (p. 12) ND		43-5-1-1481 (PIT-915) pg. 6 Attach. 2 ND		Vindex 201-635-27 (enc. 1) pg. 4 ND	

SECRET
(When Filled In)

REFERENCES-continued

HTFWR 6 Dec 49	37-120-2 (20 Dec 49) N	37-6-1-332 (BASA-4137) att
Zinnia-Vinegar 17 Aug 51 N	37-120-2 (20 Dec 49) N	200-7-3-37 Pg. 2. N/D
21 Aug 51	(24 Mar 50) N	200-7-33-76 N/D
Country? 23 Aug 51	60-120-2 (23 Mar 50)	encl. 79 SODB-3579x
100-124-2.1 (27 Apr 51) N	100-124-2 (11 Dec 50)	200-7-3-37 (one's) (p29)
100-124-5.4 (19 Dec 49) N	100-124-3 (3 Apr 49)	200-7-3-37 #3170 N/D
(4 Feb 50) N/D	211-124-1 (16 Mar 49)	200-3-1-370 (HR-a-2563) N/D
(13 Mar 50) N	37-6-1-359 Encl N/D	200-4-6-5 y (HAVA-10614) pg 196
(20 Sept 51) N/D	37-6-1-370 (HDF-20 N/D)	200-3-1-603 (HRIA 1300) N/D
100-124-5.41 (15 May 49) N/D	37-7-5-1924 (S-1 2239) N/D	200-6-12-66y1
(20 May 49) N/D	37-7-5-1924 (S-1 2239) N/D	200-6-12-66y1
(20 Nov 49) N/D	37-7-5-1924 (S-1 2239) N/D	200-6-12-66y1
(29 Dec 49) N/D	37-7-5-1924 (S-1 2239) N/D	200-6-12-66y1
(12 Jan 50)	37-7-5-1924 (S-1 2239) N/D	200-6-12-66y1
(26 Apr 50) N/D	37-7-5-1924 (S-1 2239) N/D	200-6-12-66y1
(27 July 50) N	37-7-5-1924 (S-1 2239) N/D	200-6-12-66y1
(21 Sept 50) N	37-7-5-1924 (S-1 2239) N/D	200-6-12-66y1
(4 Oct 50) N	37-7-5-1924 (S-1 2239) N/D	200-6-12-66y1
(16 Oct 50)	37-7-5-1924 (S-1 2239) N/D	200-6-12-66y1
(27 Oct 50)	37-7-5-1924 (S-1 2239) N/D	200-6-12-66y1
(26 Nov 51) N/D	37-7-5-1924 (S-1 2239) N/D	200-6-12-66y1
(3 Apr 51)	37-7-5-1924 (S-1 2239) N/D	200-6-12-66y1
(26 Apr 51) N/D	37-7-5-1924 (S-1 2239) N/D	200-6-12-66y1
(18 July 51) N/D	37-7-5-1924 (S-1 2239) N/D	200-6-12-66y1
(1 Jun 51) N/D	37-7-5-1924 (S-1 2239) N/D	200-6-12-66y1
22-124-1 (2 Jul 50) N/D	37-7-5-1924 (S-1 2239) N/D	200-6-12-66y1
37-120-4 (10 Jan 50) N/D	37-7-5-1924 (S-1 2239) N/D	200-6-12-66y1
38-120-2 (17 Mar 50)	37-7-5-1924 (S-1 2239) N/D	200-6-12-66y1
38-120-4 (27 Nov 51) N/D	37-7-5-1924 (S-1 2239) N/D	200-6-12-66y1

SECRET

SECRET
(When filled in)

INSTRUCTIONS: This form will be used when requesting a search of RI indices, and the withdrawal of listed documents from RI files. Separate forms will be used for each name submitted. No additional routing sheet is required.					
NAME CHECK AND/OR DOCUMENT REQUEST SERVICE					DATE
FROM: E. G.		DIVISION RI-SC		ROOM NO. 7101L	TELEPHONE 2117
TO:	ROOM NO.	DATE		INITIALS	ACTION DESIRED (check one)
		RECEIVED	FORWARDED		
RI SERVICE SECTION	1001 L				<input type="checkbox"/> LIST REFERENCE AND RETURN THIS FORM TO REQUESTER.
					<input type="checkbox"/> LIST REFERENCES AND SEND DOCUMENTS TO REQUESTER.
RI FILES SECTION	1400 L				<input type="checkbox"/> SEND LISTED DOCUMENTS TO REQUESTER.
					<input type="checkbox"/> LIST STATION SYMBOL NUMBER OF REFERENCES AND RETURN THIS FORM.
					<input type="checkbox"/> SEND RI ARCHIVES DOCUMENTS TO REQUESTER.
					<input type="checkbox"/> TELEPHONE APPLY.
PERSONAL DATA NAME (Last) VARGA, Bela (First) (Monsieur) (Middle) (Monsieur) TITLE (Type or print)					
ALIASES AND SPELLING VARIATIONS 					
DATE OF BIRTH 		OTHER IDENTIFYING DATA <input type="checkbox"/> NOT IDENTIFIABLE			
REFERENCES					
VARGA, Bela (Father)		370-23 Oct 49 ND		201-9130-2 (enc-3) ND	
202-3319 (10 Aug 1950) ND				201-10204 Enc. 1 ND	
38-C-1-14 ND		100-134-5.7 (12 July 50) ND		201-11370-4 enc.1 ND	
201-1554-1 (HQA-23) ND		100-370 (16 Jan 50) ND		201-22018 Attach Pg 2 ND	
73-6-2-126 (HQA-23)		100-121-2 (12 June 49) ND		201-22343 Enc.1 p.3	
3-7-0-1746 ND		30-120-1 (30 Aug 49) ND		201-42039-1 Enc.1	
370-1 June 49 ND		VARGA, Bela (Msr)			
		201-5274-3 (DIP-15074) (enc 1)			
		201-5274-7 (DIP-21703) (enc.1)			

SECRET
(When Filled In)

REFERENCES (continued)		
100-122-2 (24 Apr 51) <i>ND</i>	3-120-1 (23 Apr 51) <i>ND</i>	200-7-33-75 (PFA-211) (enc 3) <i>ND</i>
100-122-2 (10 Apr 51) <i>ND</i>	Transmittal (9 May 52) <i>ND</i>	200-7-33-93 (PFA-2498) <i>ND</i>
100-134-5 (5 Dec 49)	Zinnia-Vinegar (11 July 50) <i>ND</i>	200-7-33-102 (PFA-2524) <i>ND</i>
100-134-5.4 (20 Mar 52) <i>ND</i>	32-130-2 (1 Mar 50) <i>ND</i>	200-7-33-94 (PFA-1023) <i>ND</i>
100-134-5.41 (16 Apr 51) <i>ND</i>	38-121-1 (10 Oct 49) <i>ND</i>	200-7-33-50 (p.2) <i>ND</i>
100-134-5.41 (4 Oct 50)	(HARR-1607) (20 Oct 54)	200-7-33-57 (HFP-5039) <i>ND</i>
100-134-5.41 (29 Aug 50) <i>ND</i>	6-6-1-2252 (NAV-4651) <i>ND</i>	200-7-33-52 (pg.2) <i>ND</i>
100-134-5.41 (30 Aug 51) <i>ND</i>	6-6-2-1207 (HAR-214) <i>ND</i>	200-7-2-108 (pg.9) <i>ND</i>
100-134-7 (14 July 50) <i>ND</i>	6-6-1-1453 (HAR-694) (enc 1)	200-7-33-126 (PFA 65) pg.20 <i>ND</i>
100-134-5.41 (12 July 50)	(HAR-225) (enc 1)	200-7-71-24 (IB-XS) <i>ND</i>
100-134-1.10 (8 Jul 52)	6-8-1-251 (WH-9) <i>ND</i>	200-7-33-99 (IB 2129) <i>ND</i>
100-134-5.4 (8 Feb 50) <i>ND</i>	200-7-7-67 (Pub-D) (AT-123) <i>ND</i>	200-7-33-41y (pg.1) <i>ND</i>
100-134-5.4 (14 Jul 52) <i>ND</i>	200-6-12-7 (HAR-780) <i>ND</i>	200-7-33-108 (PFA-2562) <i>ND</i>
	200-7-33-61 (PFA-4) <i>ND</i>	200-7-33-98 (PFA-2486) <i>ND</i>

SECRET

3
SECRET
(When filled in)

INSTRUCTIONS: This form will be used when requesting a search of RI indices, and/or withdrawal of listed documents from RI files. Separate forms will be used for each name submitted. No additional routing sheet is required.					
NAME CHECK AND/OR DOCUMENT REQUEST SERVICE					DATE
FROM: <i>C. Page</i>			DIVISION		ROOM NO.
					TELEPHONE <i>2117</i>
TO:	ROOM NO.	DATE	RECEIVED	FORWARDED	INITIALS
RI SERVICE SECTION	1001 L				
RI FILES SECTION	1403 L				
					<input type="checkbox"/> LIST REFERENCE AND RETURN THIS FORM TO REQUESTER. <input type="checkbox"/> LIST REFERENCES AND SEND DOCUMENTS TO REQUESTER. <input type="checkbox"/> SEND LISTED DOCUMENTS TO REQUESTER. <input type="checkbox"/> LIST STATION SYMBOL NUMBER OF REFERENCES AND RETURN THIS FORM. <input type="checkbox"/> SEND RI ARCHIVES DOCUMENTS TO REQUESTER. <input type="checkbox"/> TELEPHONE REPLY.
PERSONAL DATA NAME (Last) (First) (Middle) TITLE <i>Page</i> <i>John</i> <i>W.</i> <i>2nd Lt.</i> (Type or print) ALIASES AND SPELLING VARIATIONS					
DATE OF BIRTH		OTHER IDENTIFYING DATA <input type="checkbox"/> NOT IDENTIFIABLE			
REFERENCES					
62-37-8-1746 ND		32-7-0-90 ND		IN46807 TRAE 925 Oct 50 ND	
29-8-8-79 ND		32-6-2-267 ND		Out 71151 Wash 18736 To Trie	
33-7-4-89 ND		32-4-4-7 Hungarian Black book		Oct 50 ND	
4-6-4-537 <i>to reach info</i> ND		VARA, Bela (Senior)		VARA, Bela (GR)	
62-7-0-153 ND		32-7-7-23 (SGL-3207) ND		29-8-8-150y (HFA 11355) ND	
32-7-0-500-25177 P.5 ND				29-6-2-527 (HFA-7600) (Enc.1) ND	
32-7-0-153372 (HFA-11334) ND				29-8-8-127 (HFA-5644) ND	
				29-8-8-150 (HFA-11334) (P. 5) ND	

138035

20-6-2-755 (MTP-7325) (p. 8)	50-130-2 (30 Nov 49) ND	
ND		
20-6-2-755 (MTP-7325) (p. 8)	50-130-2 (30 Nov 49) ND	
ND		
20-8-3-147y (EPA-100) ND	50-130-2 (5 Dec 49) ND	
ND		
20-8-3-125 (MTP-553) ND	50-130-2 (5 Dec 49) ND	
ND		
38-8-3-yl (enc 2) n /	50-130-2 (5 Dec 49) ND	
ND		
7467-6-yl 7/5 (EPA-190) ANT. 1	6-6-7-350 (enc 1) (EPA 14510) ND	
ND (pg 15)		
VARGA (C. G.)	200-7-31-101y (ID2116) ND	
20-8-3-120 (EPA-731) ND		
ND		
VARGA (C. G.)	200-7-31-193 (ID-643) ND	
ND		
100-134-5 (5 Dec 49) ND	100-8-15-50 (PUM-2560) ND	
ND		
100-134-5 (26 Apr 51) ND	20-8-3-133 (P-2521) ND	
ND		
100-134-5.41 (17 Aug 51) ND	6-8-1-225 (PUM-2520) ND	
ND		
2-120-4 (15 Aug 50) ND	11-8-1-67 (P-2560) ND	
ND		
38-120-2 (6 Dec 49) ND	13-8-16-72 (M-13) ND	
ND		
38-120-3 (12 Sept 49) ND	OSPA-1168 (M-13) 30 Dec 53	
ND		

REFERENCES CONTINUED

SECRET
(When filled in)

SECRET
(When filled in)

INSTRUCTIONS: This form will be used when requesting a search of RI indices, and/or withdrawal of listed documents from RI files. Separate forms will be used for each name submitted. No additional routing sheet is required.					
NAME CHECK AND/OR DOCUMENT REQUEST SERVICE					DATE 15 December 54
FROM: St. C. - Jane Roman - for State			DIVISION		ROOM NO. TELEPHONE
TO:	ROOM NO.	DATE		INITIALS	ACTION DESIRED (check one) <input type="checkbox"/> LIST REFERENCES AND RETURN THIS FORM TO REQUESTER. <input type="checkbox"/> LIST REFERENCES AND SEND DOCUMENTS TO REQUESTER. <input type="checkbox"/> SEND LISTED DOCUMENTS TO REQUESTER. <input type="checkbox"/> LIST STATION SYMBOL NUMBER OF REFERENCES AND RETURN THIS FORM. <input type="checkbox"/> SEND RI ARCHIVES DOCUMENTS TO REQUESTER. <input type="checkbox"/> TELEPHONE REPLY.
RI SERVICE SECTION	1001 L	RECEIVED	FORWARDED		
RI FILES SECTION	1400 L				
PERSONAL DATA NAME (Last) (First) (Middle) TITLE (Type or print) HILL, Robert					
ALIASES AND SPELLING VARIATIONS Chief for Canada of International Rescue Committee (which operates in W. Germany & W. Europe)					
DATE OF BIRTH		OTHER IDENTIFYING DATA			
VI		1181 Hill Road, New York, N.Y. <input checked="" type="checkbox"/> NOT IDENTIFIABLE			
REFERENCES					
100-2234-1		NPH			
100-2234-2		NPH			
100-2234-3		NPH			
100-2234-4		NPH			
100-2234-5		NPH			
100-2234-6		NPH			
100-2234-7		NPH			
100-2234-8		NPH			
100-2234-9		NPH			
100-2234-10		NPH			
100-2234-11		NPH			
100-2234-12		NPH			
100-2234-13		NPH			
100-2234-14		NPH			
100-2234-15		NPH			
100-2234-16		NPH			
100-2234-17		NPH			
100-2234-18		NPH			
100-2234-19		NPH			
100-2234-20		NPH			
100-2234-21		NPH			
100-2234-22		NPH			
100-2234-23		NPH			
100-2234-24		NPH			
100-2234-25		NPH			
100-2234-26		NPH			
100-2234-27		NPH			
100-2234-28		NPH			
100-2234-29		NPH			
100-2234-30		NPH			
100-2234-31		NPH			
100-2234-32		NPH			
100-2234-33		NPH			
100-2234-34		NPH			
100-2234-35		NPH			
100-2234-36		NPH			
100-2234-37		NPH			
100-2234-38		NPH			
100-2234-39		NPH			
100-2234-40		NPH			
100-2234-41		NPH			
100-2234-42		NPH			
100-2234-43		NPH			
100-2234-44		NPH			
100-2234-45		NPH			
100-2234-46		NPH			
100-2234-47		NPH			
100-2234-48		NPH			
100-2234-49		NPH			
100-2234-50		NPH			

FABIAN, BELLA

Info in Covert file —

Security Office

Although there is no card from
Security Office on the index.

FABIAN, BELLA

Not in files and missing
throughout standard channels.

6-7-11-18
(Army C-2)

100-124-3
(8 April 49)
(anti-Communist activities)

OCD card

SECRET

(When filled in)

INSTRUCTIONS: This form will be used when requesting a search of RI indices, and/or withdrawal of listed documents from RI files. Separate forms will be used for each name submitted. No additional routing sheet is required.					
NAME CHECK AND/OR DOCUMENT REQUEST SERVICE					DATE 15 Dec 54
FROM: STC - Jane Roman - for State			DIVISION		ROOM NO. TELEPHONE
TO:	ROOM NO.	DATE		INITIALS	ACTION DESIRED (Check one)
RI SERVICE SECTION	1001 L	RECEIVED	FORWARDED		<input type="checkbox"/> LIST REFERENCE AND RETURN THIS FORM TO REQUESTER.
					<input type="checkbox"/> LIST REFERENCES AND SEND DOCUMENTS TO REQUESTER.
RI FILES SECTION	1400 L				<input type="checkbox"/> SEND LISTED DOCUMENTS TO REQUESTER.
					<input type="checkbox"/> LIST STATION SYMBOL NUMBER OF REFERENCES AND RETURN THIS FORM.
					<input type="checkbox"/> SEND RI ARCHIVED DOCUMENTS TO REQUESTER.
					<input type="checkbox"/> TELEPHONE REPLY.
PERSONAL DATA					
NAME (Last)		(First)	(Middle)	TITLE	
(Type or print) FABIAN, Bella				Member, Hungarian National Committee	
ALIASES AND SPELLING VARIATIONS					
DATE OF BIRTH		OTHER IDENTIFYING DATA			<input type="checkbox"/> NOT IDENTIFIABLE
(INFO. IN COUNCIL FILE - SECURITY)					
REFERENCES					
201-9166	10-201-9166	10-201-9166	10-201-9166	10-201-9166	10-201-9166
38-129-1 (190 Oct 48)	38-129-1 (190 Oct 48)	38-129-1 (190 Oct 48)	38-129-1 (190 Oct 48)	38-129-1 (190 Oct 48)	38-129-1 (190 Oct 48)
100-121-4 (28 Nov 49)	100-121-4 (28 Nov 49)	100-121-4 (28 Nov 49)	100-121-4 (28 Nov 49)	100-121-4 (28 Nov 49)	100-121-4 (28 Nov 49)
100-122-2 (20 Apr 51)	100-122-2 (20 Apr 51)	100-122-2 (20 Apr 51)	100-122-2 (20 Apr 51)	100-122-2 (20 Apr 51)	100-122-2 (20 Apr 51)
100-134-5-41 (9 MAY 50)	100-134-5-41 (9 MAY 50)	100-134-5-41 (9 MAY 50)	100-134-5-41 (9 MAY 50)	100-134-5-41 (9 MAY 50)	100-134-5-41 (9 MAY 50)
100-134-5-41-4	100-134-5-41-4	100-134-5-41-4	100-134-5-41-4	100-134-5-41-4	100-134-5-41-4
200-7-33-26	200-7-33-26	200-7-33-26	200-7-33-26	200-7-33-26	200-7-33-26
200-7-33-112	200-7-33-112	200-7-33-112	200-7-33-112	200-7-33-112	200-7-33-112
200-7-71-33 (15 460)	200-7-71-33 (15 460)	200-7-71-33 (15 460)	200-7-71-33 (15 460)	200-7-71-33 (15 460)	200-7-71-33 (15 460)
200-7-71-67	200-7-71-67	200-7-71-67	200-7-71-67	200-7-71-67	200-7-71-67
ZINBA-VINEGAR (11 JULY 50)	ZINBA-VINEGAR (11 JULY 50)	ZINBA-VINEGAR (11 JULY 50)	ZINBA-VINEGAR (11 JULY 50)	ZINBA-VINEGAR (11 JULY 50)	ZINBA-VINEGAR (11 JULY 50)
201-9637-1	201-9637-1	201-9637-1	201-9637-1	201-9637-1	201-9637-1
201-11950	201-11950	201-11950	201-11950	201-11950	201-11950
200-6-43	200-6-43	200-6-43	200-6-43	200-6-43	200-6-43
200-7-2-160	200-7-2-160	200-7-2-160	200-7-2-160	200-7-2-160	200-7-2-160
200-7-33-37	200-7-33-37	200-7-33-37	200-7-33-37	200-7-33-37	200-7-33-37
200-7-33-38	200-7-33-38	200-7-33-38	200-7-33-38	200-7-33-38	200-7-33-38
200-7-33-45	200-7-33-45	200-7-33-45	200-7-33-45	200-7-33-45	200-7-33-45
200-7-33-50	200-7-33-50	200-7-33-50	200-7-33-50	200-7-33-50	200-7-33-50
200-7-33-76	200-7-33-76	200-7-33-76	200-7-33-76	200-7-33-76	200-7-33-76

SECRET

Michael Roach (CNR)

SECRET

200-7-33-82y (ND)	100-134-2 (ND) (16 APR 51)	38-120-4 (ND) (12 MAY 51)
200-7-33-83y (N.D.)	100-134-5 (ND) (23 MAR 51)	38-8-2-26 (ND) (Pg. 127)
200-7-33-101y (ND)	100-134-5 (ND) (26 APR 51)	38-7-15-309 (NP11) (66-7133)
200-7-33-106y (ND)	100-134-5.4 (NP11)	38-7-0-174 (not in file) (missing 10704 86) (EEFI) (check cards - file) (Nashville)
200-7-33-110 (ND)	100-134-5.4 (ND) (28 MAR 49)	38-7-0-99 (N.D.)
200-7-33-126 (N.D.) (P.23)	100-134-5.41 (ND) (15 MAY 49)	38-4-4-1 (NP11)
200-7-38-42 (NP11) (P.2) (Nashville)	100-134-5.41 (ND) (20 MAY 49)	29-8-8-150y (ND)
200-7-49-45 (ND)	100-134-5.41 (ND) (2 JAN 50)	29-8-8-150 (ND) (P.2)
200-7-61-67 (ND)	100-134-5.41 (ND) (21 JAN 50)	29-8-8-142 (ND) (PIN-2569)
211-120-4 (16 APR 51) (ND)	100-134-5.41 (ND) (21 MAR 51)	6-8-1-24 (N.D.)
100-2-20-124 (N.D.) (See in file)	62-4-6-86 (ND) (18-721)	6-7-11-18 (not in file) (missing 571455) (along A-2)
100-7-32-55y (N.D.) (ENCL. 4)	68-6-2-2544 (N.D.) (NS2A-749)	I-0/1 (Nashville) (ND)
100-8-15-73 (ND)	43-8-16-22 (ND)	Archive - JBX-005 (NP11) 1003
100-124-5 (not in file) (missing 8 JAN 55) (check cards - file) (Nashville)	43-7-26-401 (NP11) (MAY 7) (P.11)	GX-002-726 10/3/44

REFERENCES CONTINUED

(not filled in)

SECRET

SECRET
(When filled in)

INSTRUCTIONS: This form will be used when requesting a search of RI indices, and/or withdrawal of listed documents from RI files. Separate forms will be used for each name submitted. No additional routing sheet is required.

INSTRUCTIONS: This form will be used when requesting a search of RI indices, and/or withdrawal of listed documents from RI files. Separate forms will be used for each name submitted. No additional routing sheet is required.					
NAME CHECK AND/OR DOCUMENT REQUEST SERVICE				DATE 15 Dec 54	
FROM: St C - Jane Roman - for State		DIVISION		ROOM NO.	TELEPHONE
TO:	ROOM NO.	DATE		INITIALS	ACTION DESIRED (Check one)
		RECEIVED	FORWARDED		
RI SERVICE SECTION	1001 L				<input type="checkbox"/> LIST REFERENCE AND RETURN THIS FORM TO REQUESTER.
					<input type="checkbox"/> LIST REFERENCES AND SEND DOCUMENTS TO REQUESTER.
RI FILES SECTION	1400 L				<input type="checkbox"/> SEND LISTED DOCUMENTS TO REQUESTER.
					<input type="checkbox"/> LIST STAT. ON SYMBOL NUMBER OF REFERENCES AND RETURN THIS FORM.
					<input type="checkbox"/> SEND RI ARCHIVED DOCUMENTS TO REQUESTER.
					<input type="checkbox"/> TELEPHONE REPLY.
PERSONAL DATA					
NAME (Last) (Type or print) GANTAY, Dr. Bela		(First)		(Middle)	TITLE
ALIASES AND SPELLING VARIATIONS					
Former major in Royal Hungarian Police. Formerly employed with various voluntary agencies in West Germany. DATE OF BIRTH _____ OTHER IDENTIFYING DATA _____ NOT IDENTIFIABLE <input type="checkbox"/>					
REFERENCES					
Gantay, Bela 32-611-2874 32-7445-5 - Tr Chaloff, WH C-2 P-4-		MGR A-9432			
Gantay, Adalbert 201-40480 ✓ N.D.				Hr Baumg DRE	

SECRET
(When Filled in)

INSTRUCTIONS: This form will be used when requesting a search of RI indices, and/or withdrawal of listed documents from RI files. Separate forms will be used for each name submitted. No additional routing sheet is required.					
NAME CHECK AND/OR DOCUMENT REQUEST SERVICE					DATE 15 Dec. 54
FROM: STC - Jane Roman - for State			DIVISION		ROOM NO.
TO:		ROOM NO.	DATE RECEIVED FORWARDED		INITIALS
RI SERVICE SECTION	1001 L				121
RI FILES SECTION	1400 L				
ACTION DESIRED (Check one)					
<input type="checkbox"/> LIST REFERENCE AND RETURN THIS FORM TO REQUESTER.					
<input type="checkbox"/> LIST REFERENCES AND SEND DOCUMENTS TO REQUESTER.					
<input type="checkbox"/> SEND LISTED DOCUMENTS TO REQUESTER.					
<input type="checkbox"/> LIST STATION SYMBOL NUMBER OF REFERENCES AND RETURN THIS FORM.					
<input type="checkbox"/> SEND RI ARCHIVED DOCUMENTS TO REQUESTER.					
<input type="checkbox"/> TELEPHONE REPLY.					
PERSONAL DATA					
NAME (Last) <input checked="" type="checkbox"/> FNU ALLY		(First) N		(Middle)	
(Type or print) LEMKE, Lotte		LEMK		LANKE	
ALIASES AND SPELLING VARIATIONS LEMKA					
DATE OF BIRTH		OTHER IDENTIFYING DATA N			
<input type="checkbox"/> NOT IDENTIFIABLE					
REFERENCES					
LEMKE, FNU					
32-6-1-12052 NP11					
(EGBA-12375)					
32-7-30-342					
MGL-12137 NP11					
20-61900					
32-4-23-33,45					
HAOR-2 NP11					
32-6-12-436					
EGLA-4264 NP11					
TS-0170					
FNS 1					

SECRET

(When filled in)

0

INSTRUCTIONS: This form will be used when requesting a search of RI indices, and/or withdrawal of listed documents from RI files. Separate forms will be needed for each name submitted. No additional routing sheets are required.

NAME CHECK AND/OR DOCUMENT REQUEST SERVICE					DATE	
FROM: St C - Jane Barron - for State					15 December 1951	
DIVISION					ROOM NO.	TELEPHONE
TO:	ROOM NO.	DATE		INITIALS	ACTION DESIRED (Check one)	
RI SERVICE SECTION	1001 L	RECEIVED	FORWARDED		<input type="checkbox"/> LIST REFERENCE AND RETURN THIS FORM TO REQUESTER. <input type="checkbox"/> LIST REFERENCES AND SEND DOCUMENTS TO REQUESTER. <input type="checkbox"/> SEND LISTED DOCUMENTS TO REQUESTER. <input type="checkbox"/> LIST STATION SYMBOL NUMBER OF REFERENCES AND RETURN THIS FORM. <input type="checkbox"/> SEND RI ARCHIVES DOCUMENTS TO REQUESTER. <input type="checkbox"/> TELEPHONE REPLY.	
RI FILES SECTION	1400 L					
PERSONAL DATA						
NAME (Last)		(First)		(Middle)		TITLE
(Type or print) MATSON, Anna W.						
ALIASES AND SPELLING VARIATIONS						
Director for Germany of International Rescue Committee						
DATE OF BIRTH		OTHER IDENTIFYING DATA				
		32-6-33-1521 p 6-24 4/10/52				
<input type="checkbox"/> NOT IDENTIFIABLE						
REFERENCES						
MATSON, Anna (MRS)		MATSON, ANNA WALLING		MATSON, ANNA WALLING		
74-6-13-1654 ND		aka MATSON, Anna		D: 21 Dec 1911		
NE-MA 8353		Education: Sorbonne, Paris		Adelphus, NY		
NO 8/10/52		Univ. of Geneva		nee STUNSKY		
74-6-34-1-15		Transl. 12/23-6/24 Paris		aka (MRS) Norman		
E-MA 2158		6-10/24 France, Zurich		N/C MATSON		
MATSON, ANNA		6/9/38 Zurich, Switzerland		100-2-1-465 E9		
74-126-3-682 E		4/31-6/22 Zurich, Switzerland		100-2-11-465 E2		
E-MA 36700 E-MA		for Education		nee WALLING, Anna		
74-6/34-7-120		Address: Zurich, 12		WALLING (MRS)		
E-MA 2767		12-1-1911		67-4-3-2567 NP11		
ND info		married, Paris, 1911		ST F Category 126		
		Occup. 4-10-34-1-15		E2 D.1		
		6/2-10/24				
		4/10/52				
		110-2-1-465				
		2-10-1-465				
		Paris				

SECRET
(When filled in)

INSTRUCTIONS: This form will be used when requesting a search of RI indices, and/or withdrawal of listed documents from RI files. Separate forms will be used for each name submitted. No additional routing sheet is required.					
NAME CHECK AND/OR DOCUMENT REQUEST SERVICE					DATE 15 Dec 54
FROM St. C. - Jena Boman - for State			DIVISION		ROOM NO.
TO:		ROOM NO.	DATE	INITIALS	ACTION DESIRED (Check one)
RI SERVICE SECTION	1001 L	RECEIVED	FORWARDED		<input type="checkbox"/> LIST REFERENCES AND RETURN THIS FORM TO REQUESTER.
					<input type="checkbox"/> LIST REFERENCES AND SEND DOCUMENTS TO REQUESTER.
RI FILES SECTION	1400 L				<input type="checkbox"/> SEND LISTED DOCUMENTS TO REQUESTER.
					<input type="checkbox"/> LIST STATION SYMBOL NUMBER OF REFERENCES AND RETURN THIS FORM.
					<input type="checkbox"/> SEND RI ARCHIVES DOCUMENTS TO REQUESTER.
					<input type="checkbox"/> TELEPHONE REPLY.
PERSONAL DATA					
NAME (Last)		(First)		(Middle)	
(Type or print) LANE, Erna				TITLE	
ALIASES AND SPELLING VARIATIONS					
Frankfurt assistant to Fritz OREL in the work of Internat'l Rescue Committee (which					
DATE OF BIRTH		OTHER IDENTIFYING DATA <input type="checkbox"/> NOT IDENTIFIABLE			
operates in W. Germany & W. Europe).					
REFERENCES					
LANE ERNA		LANE ERNA BOMAN		VISA	
52-2-4-14-NP		See Damm, Eugene		NP	
(ERNA-5825)					
(4)		LANE, E			
200-8-5-1177		CIC Document		1454-D 1205	
(EDH one p. 24)		file 3		CT 44	
(200-4-5)		189 79 NP			
LANE ERNA Koblitz					
201-7034-2					
DEC 15 77		NP			
on 1 Feb 52		28)			

SECRET
(When filled in)

INSTRUCTIONS: This form will be used when requesting a search of RI indices, and/or withdrawal of listed documents from RI files. Separate forms will be used for each name submitted. No additional routing sheet is required.

NAME CHECK AND/OR DOCUMENT REQUEST SERVICE	DATE 15 Dec 54
---	--------------------------

FROM: St C. Jane Roman for State	DIVISION	PHONE NO.	TELEPHONE
---	----------	-----------	-----------

TO:	ROOM NO.	DATE		INITIALS	ACTION DESIRED (CHECK ONE)
		RECEIVED	FORWARDED		
RI SERVICE SECTION	1001 L		12/29/54	WEC	<input type="checkbox"/> LIST REFERENCE AND RETURN THIS FORM TO REQUESTER.
					<input type="checkbox"/> LIST REFERENCES AND SEND DOCUMENTS TO REQUESTER.
RI FILES SECTION	1400 L				<input type="checkbox"/> SEND LISTED DOCUMENTS TO REQUESTER.
					<input type="checkbox"/> LIST STATION SYMBOL NUMBER OF REFERENCES AND RETURN THIS FORM.
					<input type="checkbox"/> SEND BY ARCHIVES DOCUMENTS TO REQUESTER.
					<input type="checkbox"/> TELEPHONE REPLY.

PERSONAL DATA			
NAME (Last)	(First)	(Middle)	FILE
(Type or print) BECKER	Abraham G.	Decher	BECKER
ALIAS AND SPELLING VARIATIONS			& elsewhere)
Executive Director of International Rescue Committee (which operates in W. Germany/			
DATE OF BIRTH	OTHER IDENTIFYING DATA		
	<input type="checkbox"/> NOT IDENTIFIABLE		

REFERENCES		
Abraham BECKER Born 10 March 1890 Odessa, USSR LDD-2-8-3183 (CSFB 17173 3-3) @ Abraham BECHUK 201-25322-3 (DFB 78721) (Enc 11) <div style="border: 1px solid black; padding: 5px; margin-top: 10px;"> 43-0-1-y30 PIR 849 </div>	Abraham BECKER (PIR 849) LDD-121-1 ND1 8/22/52 29-0-1-52g 29-3-12-54	Abraham G BECKER 201-1419-1 (DFB 16945) 3-1 27 Mr BECKER, IRC 100-8-11-328 (DFB 15778) 2-1 201-9096-1 (DFB 13319) <div style="border: 1px solid black; padding: 5px; margin-top: 10px;"> 29-3-12-54 </div>

SECRET
(When filled in)

[illegible]

SECRET

(When Filled in)

INSTRUCTIONS: This form will be used when requesting a search of RI indices, and/or withdrawal of listed documents from RI files. Separate forms will be used for each name submitted. No additional routing sheet is required.					
NAME CHECK AND/OR DOCUMENT REQUEST SERVICE					DATE 15 December 1951
FROM: St. C - Jane Roman - for State		DIVISION		ROOM NO.	TELEPHONE
TO:	ROOM NO.	DATE		INITIALS	ACTION DESIRED (Check one)
		RECEIVED	FORWARDED		
RI SERVICE SECTION	1001 L				<input type="checkbox"/> LIST REFERENCE AND RETURN THIS FORM TO REQUESTOR.
					<input type="checkbox"/> LIST REFERENCES AND SEND DOCUMENTS TO REQUESTOR.
RI FILES SECTION	1400 L				<input type="checkbox"/> SEND LISTED DOCUMENTS TO REQUESTOR.
					<input type="checkbox"/> LIST STAT. CH. SYMBOL NUMBER OF REFERENCES AND RETURN THIS FORM.
					<input type="checkbox"/> SEND RI ARCHIVED DOCUMENTS TO REQUESTOR.
					<input type="checkbox"/> TELEPHONE REPLY.
PERSONAL DATA					
NAME (Last) <input checked="" type="checkbox"/> (First) (Middle)		TITLE			
(Type or print) DALLIN, L. (Mrs.)					
ALIASES AND SPELLING VARIATIONS					
Director for Germany of International Rescue Committee					
DATE OF BIRTH		OTHER IDENTIFYING DATA			
<input type="checkbox"/> NOT IDENTIFIABLE					
REFERENCES					
<p>ESTRIN 201-8659-2 (REF-14559) 11 mg</p> <p>Doc indicate</p> <p>that there is one Mrs. Lydia Dallen</p> <p>mailed to Dr. DALLIN.</p> <p>NP 11-14</p>					

SECRET
(When filled in)

[illegible]

SECRET

(When filled in)

INSTRUCTIONS: This form will be used when requesting a search of RI indices, and/or withdrawal of listed documents from RI files. Separate forms will be used for each name requested. No additional routing sheet is required.

NAME CHECK AND/OR DOCUMENT REQUEST SERVICE

DATE: 15 Dec 54

FROM: St. C. - Jane Roman - for State

DIVISION: ROOM NO.: TELEPHONE:

TO:	ROOM NO.	DATE		INITIALS	ACTION DESIRED (Check one)
		RECEIVED	FORWARDED		
RI SERVICE SECTION	1001 L				<input type="checkbox"/> LIST REFERENCES AND RETURN THIS FORM TO REQUESTER. <input type="checkbox"/> LIST REFERENCES AND SEND DOCUMENTS TO REQUESTER. <input type="checkbox"/> SEND LISTED DOCUMENTS TO REQUESTER. <input type="checkbox"/> LIST STATION SYMBOL NUMBER OF REFERENCES AND RETURN THIS FORM. <input type="checkbox"/> SEND RI ARCHIVED DOCUMENTS TO REQUESTER. <input type="checkbox"/> TELEPHONE REPLY.
RI FILES SECTION	1400 L				

PERSONAL DATA

NAME (Last): SKA (First): SKA (Middle): SKA TITLE:

(Type or print) TERROUSKI, Conrad ZERROUSKI

ALIASES AND SPELLING VARIATIONS: Bremen Representative of International Rescue Committee

DATE OF BIRTH: OTHER IDENTIFYING DATA: ☐ NOT IDENTIFIABLE

REFERENCES

N 811-1.2

SECRET

SECRET
(When filled in)

[illegible]

SECRET

(When filled in)

INSTRUCTIONS: This form will be used when requesting a search of RI indices, and/or withdrawal of listed documents from RI files. Separate forms will be used for each name submitted. No additional routing sheet is required.

NAME CHECK AND/OR DOCUMENT REQUEST SERVICE					DATE 15 Dec 54	
FROM: St C - Jane Roman - for State			DIVISION		ROOM NO.	TELEPHONE
TO:	ROOM NO.	DATE		INITIALS	ACTION DESIRED (Check one)	
RI SERVICE SECTION	1001 L	RECEIVED	FORWARDED		<input type="checkbox"/> LIST REFERENCE AND RETURN THIS FORM TO REQUESTER. <input type="checkbox"/> LIST REFERENCES AND SEND DOCUMENTS TO REQUESTER. <input type="checkbox"/> SEND LISTED DOCUMENTS TO REQUESTER. <input type="checkbox"/> LIST STATION SYMBOL NUMBER OF REFERENCES AND RETURN THIS FORM. <input type="checkbox"/> SEND RI ARCHIVES DOCUMENTS TO REQUESTER. <input type="checkbox"/> TELEPHONE REPLY.	
RI FILES SECTION	1400 L					
PERSONAL DATA NAME (Last) <u>✓</u> (First) (Middle) TITLE (Type or print) <u>GROSSMAN, Harry</u> ALIASES AND SPELLING VARIATIONS <u>In Frankfurt office of US Escapee Program Division</u> DATE OF BIRTH OTHER IDENTIFYING DATA <input type="checkbox"/> NOT IDENTIFIABLE						
REFERENCES						
<u>Grossman, Harry</u> <u>Al. 1001 - N.D.</u> <u>32-6-1-10269</u> <u>EGQA-19107 - N.D.</u> <u>32-6-33-2027</u> <u>EGQA-47659 - N.D.</u> <u>200-7-5-1355</u> <u>DFB-11787 - N.I.</u> <u>Encl 4</u> <u>32-6-1-12395</u> <u>ECGW 16547 - N.D.</u>						
<u>No Reply</u> <u>ARB</u>						

SECRET
(When filled in)

<small>INSTRUCTIONS: This form will be used when requesting a search of RI indices, and or withdrawal of listed documents from RI files. Separate forms will be used for each name submitted. No additional routing sheet is required.</small>					
NAME CHECK AND/OR DOCUMENT REQUEST SERVICE					DATE 15 Dec. 54
FROM: STC - Jane Roman - for State			DIVISION	ROOM NO.	TELEPHONE
TO:	ROOM NO.	DATE RECEIVED FORWARDED		INITIALS	ACTION DESIRED (Check one)
RI SERVICE SECTION	1001 L				<input type="checkbox"/> LIST REFERENCE AND RETURN THIS FORM TO REQUESTER.
					<input type="checkbox"/> LIST REFERENCES AND SEND DOCUMENTS TO REQUESTER.
RI FILES SECTION	1400 L				<input type="checkbox"/> SEND LISTED DOCUMENTS TO REQUESTER.
					<input type="checkbox"/> LIST STATION SYMBOL NUMBER OF REFERENCES AND RETURN THIS FORM.
					<input type="checkbox"/> SEND RI ARCHIVES DOCUMENTS TO REQUESTER.
					<input type="checkbox"/> TELEPHONE REPLY.
PERSONAL DATA					
NAME (Last) (Type or print) JILEK, Theophil		(First) JILEK		(Middle) JILEK	
ALIASES AND SPELLING VARIATIONS JILEK				TITLE emigration sponsored by International Rescue Committee	
DATE OF BIRTH 17 October 1892 in Czechoslovakia		OTHER IDENTIFYING DATA JILEK			
REFERENCES					
200-7-51-2244 (DST-2090)					
Ref: Unnumbered Referrals dated 13 May 1952 for Amembassy Paris. From subject: Report of Refusal of Visa to Theophil JILEK Under the Act of Oct 16, 1948, on Amendment to the National Security Act.					
J.Z.					
Summary: After our official Anti-Communist Agent admitted CP membership (in Canada) from 1921 to 1928.					

SECRET

(When filled in)

INSTRUCTIONS: This form will be used when requesting a search of RI indices, and/or withdrawal of listed documents from RI files. Separate forms will be used for each name submitted. No additional routing sheet is required.

NAME CHECK AND/OR DOCUMENT REQUEST SERVICE					DATE 15 Dec 54	
FROM: STC Jane Roman - for state			DIVISION		ROOM NO.	TELEPHONE
TO:	ROOM NO.	DATE	INITIALS	ACTION DESIRED (Check one)		
RI SERVICE SECTION	1001 L	RECEIVED	FORWARDED	<input type="checkbox"/>	LIST REFERENCES AND RETURN THIS FORM TO REQUESTER.	
				<input type="checkbox"/>	LIST REFERENCES AND SEND DOCUMENTS TO REQUESTER.	
RI FILES SECTION	1400 L			<input type="checkbox"/>	SEND LISTED DOCUMENTS TO REQUESTER.	
				<input type="checkbox"/>	LIST STATION SYMBOL NUMBER OF REFERENCES AND RETURN THIS FORM.	
				<input type="checkbox"/>	SEND RI ARCHIVED DOCUMENTS TO REQUESTER.	
				<input type="checkbox"/>	TELEPHONE REPLY.	

PERSONAL DATA

NAME (Last) **Hungarian Refugee Bureau-located in Munich** (First) (Middle) TITLE

(Type or print)

ALIASES AND SPELLING VARIATIONS

DATE OF BIRTH OTHER IDENTIFYING DATA ☐ NOT IDENTIFIABLE

REFERENCES

HUNGARIAN REFUGEE BUREAU 2007-55-51 (STP) NPII (1001-122) p. 11	HUNGARIAN REFUGEE BUREAU 10 TRANCE ZIMMERMAN NPII 10 000 40	HUNGARIAN REFUGEE BUREAU 58-124-2 NPII 50 MAR 49
29-04-04 NPII (1001-122) NPII 1001-122 p. 10	HUNGARIAN REFUGEE BUREAU 58-124-2 NPII 29 NOV 49	NPII RM T-54
58-124-2 NPII (1001-122) NPII	58-124-2 NPII (1001-122) NPII	
58-124-2 NPII 20 MAR 50		

SECRET
(When filled in)

25 DB - 31771

NAME CHECK AND/OR DOCUMENT REQUEST SERVICE					DATE 15 Dec 54	
FROM: St. C - Jane Rann - for State			DIVISION		ROOM NO.	TELEPHONE
TO:	ROOM NO.	DATE		INITIALS	ACTION DESIRED (Check one)	
		RECEIVED	FORWARDED			
RI SERVICE SECTION	1001 L				<input type="checkbox"/> LIST REFERENCE AND RETURN THIS FORM TO REQUESTER.	<input type="checkbox"/> LIST REFERENCES AND SEND DOCUMENTS TO REQUESTER. <input type="checkbox"/> SEND LISTED DOCUMENTS TO REQUESTER. <input type="checkbox"/> LIST STATION SYMBOL NUMBER OF REFERENCES AND RETURN THIS FORM. <input type="checkbox"/> SEND RI ARCHIVED DOCUMENTS TO REQUESTER. <input type="checkbox"/> TELEPHONE REPLY. <i>AKB</i>
RI FILES SECTION	1400 L					
PERSONAL DATA NAME (Last) (First) (Middle) TITLE <i>FAUST, Marcel</i> <i>Refer to D.H. of Army</i> <i>CRP: CIC, Langley, Ontario</i> ALIASES AND SPELLING VARIATIONS <i>501-S-4524 dated 11/11/49</i> <i>Berlin Representative of International Rescue Committee</i> DATE OF BIRTH OTHER IDENTIFYING DATA <input type="checkbox"/> NOT IDENTIFIABLE						
REFERENCES <div style="display: flex; justify-content: space-between;"> <div> <i>Faust, Marcel</i> <i>6-124-3-15</i> <i>EAVA 15-35 N.D.</i> <i>NY-24-1-1-1-4</i> <i>(H.S.) 1-1-8</i> <i>Frank - 1-1-1-1-1-1</i> <i>Pers - 1-1-1-1-1-1</i> <i>fold of 1-1-1-1-1-1</i> <i>1-1-1-1-1-1</i> <i>6-6-7-76910, NO</i> <i>CIC - 1257</i> <i>6-2-0-6</i> <i>MAVA - 73-33</i> </div> <div> <i>Pers - 1-1-1-1-1-1</i> <i>F.N. B.</i> <i>Guantanamo 1-2</i> <i>See Korink P. 2-1</i> <i>6-6-2-3761</i> <i>MAVA 2578</i> <i>6-6-2-3701</i> <i>MAVA 7616</i> <i>1-1-1-1-1-1</i> <i>See to Charles Herbert</i> <i>EE/A. - 14 R 54</i> </div> <div> <i>MAVA - 7610</i> <i>6-6-2-3701</i> <i>EAVA 15+2</i> <i>6-124-3-1-1-1-1-1</i> <i>Various off - 1-1-1-1-1-1</i> <i>N.D.</i> <i>N.D.</i> <i>N.D.</i> <i>N.D.</i> <i>N.D.</i> </div> </div>						

SOURCE 500B 2888

MEMORANDUM

SUBJECT: INTERNATIONAL RESCUE COMMITTEE (formerly International Rescue and Relief Committee)

1. The files of OSO/CIA reflect the following information on the International Rescue and Relief Committee (IRRC).

2. A report in August 1947 indicates that the IRRC of 103 Park Avenue, New York City, L.H. Wood, President, was an organization actively supporting the formation of international brigades for and providing other aids to the Greek partisans who were in rebellion against the legal government of Greece. Sheila STRUNSKY was the official representative of this organization in Paris where an active branch of IRRC was located. The report states further that one Dora MARTIN, also a representative of IRRC, arrived in Paris (presumably from the United States) with a sum of money to be spent on recruitment for these international brigades. While in Paris, Dora MARTIN was in contact with a M. DEMAY, frn, reportedly a prominent Belgian Communist and an honorary colonel in the International Brigades, who, allegedly, came to Paris expressly to meet her. After conversations with General JOINVILLE (real name Alfred MALLERET--Communist Party deputy from the Seine), MARTIN left for southern France to inspect formations of international brigades. She was supposed to leave for northern Italy with a representative of the Italian Communist Party sometime in late July 1947.

3. An excerpt from a report from the Military Attache, Brussels dated 10 September 1947 stated that Dora MARTIN, an American and a delegate of the IRRC, was to contact the Basque intelligence service in France. Reportedly, she was accompanied by Jose GOSALVE MONTERA, a Soviet officer, who was a special agent of the "Central Intelligence Service." In addition, MARTIN was to contact the Spanish Republican Government and the clandestine forces in Spain, especially the members of the Basque Resistance movement. On the date of the report she was believed to be in Bilbao, Spain and allegedly was in possession of false identity papers in the name of Mercedes (last name illegible, possibly GOROSTUGUI or GOROSTUGUI).

4. In June 1948 it was reported that IRRC had branch offices at via Anrona 31, Rome, Italy, telephone 43980. IRRC's American representative in Rome was listed as Mrs. Edna LIST.

5. It is suggested that a further check be made at the Federal Bureau of Investigation on subject corporation, Sheila STRUNSKY and Edna LIST.

CHARGED FROM RIB/FI

CHARGED FROM IP/FT

NOT TO BE DISSEMINATED FURTHER OR EXHIBITED
TO ANYONE WITHOUT PRIOR PERMISSION OF THE
CENTRAL INTELLIGENCE AGENCY.

SECRET CONTROL - U. S. OFFICIALS ONLY

FULL NAME OF PERSON OR FIRM INTERNATIONAL RESCUE COMMITTEE (formerly Int'l Rescue & Relief Comm' o)		DATE OF BIRTH	PLACE OF BIRTH
ALIASES AND NICKNAMES 181 Shumsky 100-2-5-164 29-0-1-64Y-R CC-2014		RACE	SEX
ADDRESS		OCCUPATION	EMPLOYER
TYPE OF INFORMATION DESIRED <input type="checkbox"/> All information <input type="checkbox"/> Derogatory		CITIZENSHIP STATUS	NAT. CERT. NO.
NAME OF ORGANIZATION		MARITAL STATUS	
		HEADQUARTERS ADDRESS 62 West 45th St., NYC 19	
RELY <input checked="" type="checkbox"/> Material attached <input type="checkbox"/> No record <input type="checkbox"/> No derogatory information <input type="checkbox"/> Other		OSTENSIBLE PURPOSE NAMES OF LEADERS OR SPONSORS OR AFFILIATED ORGANIZATION L. Hollingsworth Wood - Chairman David F. Seiferhold - Treasurer Sheba Strunsky - Exec. Secretary	
ADDITIONAL INFORMATION J-115-2 J-124-1412 Lila-376 CD-157-1412 Case in 2256 (10/1/11) Sent. Recd. / Communication 100-5-340 - Memo T. W. 7-12-100			
DATE		MEMORANDUM COORDINATION STAMP ANALYST FOREIGN DIVISION REVIEW IID 65 SEP 5 TYPIST 181	

J

CONFIDENTIAL

ECP

ROUTING AND RECORD SHEET

7 June 1955

INSTRUCTIONS: Officer designations should be used in the "TO" column. Under each comment a line should be drawn across sheet and each comment numbered to correspond with the number in the "TO" column. Each officer should initial (check mark insufficient) before further routing. This Routing and Record Sheet must be returned to Registry.

FROM:

RI/ANALYSIS

Request

17-5-57

TELEPHONE

NO.

EGGA-230

DATE

TO	ROOM NO.	DATE		OFFICER'S INITIALS	TELEPHONE	COMMENTS
		REC'D	PRO'D			
1. EE/OCG	2020		22 JUN 1955	SM		2. EMIGRE MATTERS - W. Ger.
2. EE/FI	SH		22 JUN 1955	SL		
3. EE/P	JUN					
4. EEN						
5. EE/C	20		20 JUN 1955	SL		
6. SR/3						
7. SR/PP	20155					
8. SE/2	20155					
9. SE/5	20155					
10. SE/1	20155					
11. RI/FI	1409					

CHARGED FROM RID/FI

CHARGED FROM IP/FI

Copy Detached 52/4 to AC/SC-4 Board (chrs no)

CO EE/FI/6/REGULAR

X REF. FORM FILED
IN: 32-7-57-N.S.
200-7-182-A.5

32 7 62

ABSTRACT ☒ INDEX ☒

DATE 20 JUN 1955

FORM 51-10 PREVIOUS EDITIONS MAY BE USED

SECRET

CONFIDENTIAL

UNCLASSIFIED (40)

VIA: _____
(SPECIFY AIR OR SEA ROUTE)

DISPATCH NO. EGGA-230

SECRET

CLASSIFICATION

TO : Chief, EE ✓
FROM : Chief of Base, Hamburg

DATE: 7 June 1955

INFO: COM

SUBJECT: GENERAL— Operational

SPECIFIC— Report on Satellite nationals in the North German Area.

1. In 1945 the total number of refugees in West Germany amounted to 10 millions of people. By 1953 this number had been reduced to approximately 240,000, where it has remained relatively static ever since. Of this latter number, approximately 12,373 (or ca. 5 % of the total) were located in the Hamburg area. As a group, they are youthful and prolific. Approximately 12% are social cases, 50% are active and employable adults, 8% are employed by the occupation authorities and over 25% are unemployed.

2. The overall percentage of non-German refugees among the native population is .48%. In Hamburg this figure is .73% while Schleswig-Holstein with the greatest concentration in Germany has a total number of refugees including German amounting to over 30% of the entire population.

3. The national refugee groups in Hamburg as of 1 January 1953 were as follows:

Bulgarians	97	Poles (including Ukrainian)	3952
Czechs (4 - Czechs?)	1215	Roumainians	470
Estonians	182	Russians	442
Hungarians	954	Yugoslavs	1020
Latvians	971	Stateless	2829
Lithuanian	241		-----
		TOTAL	12373

Of this total of 12373 approximately 7000 may be considered active and employable and 5400 as non-active and unemployable. Of the 7000, 5000 are employed and 2000 unemployed. On this date they were located as follows in Hamburg:

In refugee camps	2204
On the economy	10169

	12373

It is interesting to compare the figure 2204 with the total for Hamburg refugee camps in Table A, 2189, and also with the figure in Table B, 2018 (17 February 1955) to show how static these figures are. (Table A: June 1952). Also of interest is the fact that the ratio of these in camps to those outside is generally 5:3 (Table A), while for Hamburg, the ratio is closer to 1:5. Of greatest interest to us of course are

DISTRIBUTION:

3 - EE w/atts 3-COM

w/att.

FORM NO. 51-28A
MAR. 1949

SECRET

CLASSIFICATION

RE COPY

32-7-62-1

SECRET

ECGA-230
Page 2
7 June 1955

the Czechs and Poles with the largest numbers. (This is not so clearly seen in Table A as the nationalities are listed only for Greek and Roman Catholics). The Russians will be watched, though small in number. Table B proves that most of the Czechs in this area are living on the economy.

4. The groups we are interested in arrived in West Germany as follows:

Nationality	Total in West Germany	Arrived prior to 1939	Arrived during World War II	Arrived After 1945
Poles	45,000	6%	47.4%	46.6%
Czechs	8,000	13.9%	18 %	68. %
Russians	10,000	3.3%	47.1%	49. %

5. The entire Hamburg population picture reflects a strong refugee group, but primarily German in character:

Hamburg population: (in 1000s)

Native 1,426 84.5%

German Refugees:

Vertriebene	150	
Zugewanderte	<u>87</u>	
	237	14.1%

Non-German refugees: 12.4 .73%

Foreign residents: 10.5 .62%

6. Table C for Niedersachsen is included to show that the statistics for 1952 given in Table A still apply. The total in 1952 of non-German refugees in Land Niedersachsen was 11,746. The figure on 1 January 1955 was 11,650, three years later.

7. To show why the German authorities tend to pay less attention to the non-German refugees, the figures for German refugees for Land Niedersachsen as of 1 August 1953 are included in Table D. (See also figures in 5 above.) If one includes those Germans receiving aid for losses resulting from the war, then the figure is 142,186 in 1623 camps as opposed to 11,746 in 28 camps for the Non-Germans.

8. Thus ~~are~~ efforts should properly be directed at those agencies primarily concerned with the Non-German refugees. These are listed in Table E. Organizations involved in similar work in the United States are listed in Table F. By comparing E with F, we find a number of organizations of this nature without representation in Hamburg, and

SECRET

32-7-62 15

EGGA-230
Page 3
7 June 1955

thereby affording possible cover for our purposes. Of those organizations listed in Table E, Staples has met the representatives of 7, 10 and 12 to date.

9. A further group active among the non-German refugees is the Union of Polish Refugees in Germany, 22a, Telbert, Rhineland, Schliessfach 291. Staples has met the President and Secretary General of this organization, Kazimierz DROBNY and Witold LEWANDOWSKI, as well as the Vice Chairman of District 1 (Hamburg), Stanislaw KANCZUR.

10. Very generally, we can say that our refugee in this area is a youthful Pole who arrived in Germany ca. 1945. He is unemployed or has a low-paying job, and is living on the economy with little or no chance of bettering his position here in Germany. He probably has family responsibilities. The authorities do not pay much attention to him, owing to the magnitude of the increasing German refugee problem. Nevertheless he is in contact with representatives either or both of the power blocs in Europe, each of which is attempting to win his support. He is not suited for espionage save in very low-level operations. On the other hand, he most likely would enter such work only if promised long term solutions to his present problems.



SECRET

32-262-12

DA Centres	Total	Belgians	Canadians	Estonians	Lithuanians	Hungarians	Roumanians	Ukrainians	Yugoslavs	Czechs	Bulgarians	Miscellaneous	U.S.S.R.	White Ruthenians	Stateless	Undetermined	Germans i.c.	Employed	Persons
																		m.	f.
Bracefield	138	97	14	4	4	70	5	48	9	4	9	9	9	9	9	9	221	64	
Bracefield	97	138	3	4	13	7	180	63	2	4	8	6	2	2	2	2	132	94	
Bracefield	412	412	1	1	1	1	1	1	1	1	1	1	1	1	1	1	1	14	
Bracefield	50	50	1	1	1	1	1	1	1	1	1	1	1	1	1	1	325	6	
Bracefield	205	205	2	2	2	2	2	2	2	2	2	2	2	2	2	2	20	25	
Bracefield	153	153	1	1	1	38	4	17	1	1	1	1	1	1	1	1	254	8	
Bracefield	290	290	1	1	1	1	1	21	1	1	1	1	1	1	1	1	11	15	
Bracefield	161	161	1	1	1	1	1	35	1	2	1	1	1	1	1	1	16	1	
Bracefield	150	150	2	20	18	3	3	1	1	1	1	1	1	1	1	1	202	41	
Bracefield	587	587	3	1	1	1	2	19	16	11	1	1	1	1	1	1	10	60	
Bracefield	106	106	1	1	1	2	16	65	2	18	1	24	1	6	1	1	19	42	
Bracefield	100	100	1	1	1	1	12	51	1	5	1	1	1	1	1	1	195	57	
Bracefield	100	100	2	2	2	2	2	4	1	1	1	1	1	1	1	1	1	71	
Bracefield	100	100	1	1	1	1	4	79	10	2	1	1	1	1	1	1	2	74	
Bracefield	100	100	1	1	1	1	23	1	4	1	1	1	1	1	1	1	4	22	
Bracefield	100	100	1	1	1	1	11	1	1	1	1	1	1	1	1	1	1	17	
Bracefield	100	100	1	1	1	1	6	28	1	1	1	1	1	1	1	1	7	1	
Bracefield	100	100	1	1	1	1	3	1	1	1	1	1	1	1	1	1	17	28	
Bracefield	100	100	1	1	1	1	1	5	1	1	1	1	1	1	1	1	15	7	
Bracefield	100	100	1	1	1	1	1	1	1	1	1	1	1	1	1	1	3	16	
Bracefield	100	100	1	1	1	1	1	1	1	1	1	1	1	1	1	1	6	49	
Bracefield	100	100	1	1	1	1	1	1	1	1	1	1	1	1	1	1	11	2	
Bracefield	100	100	1	1	1	1	1	1	1	1	1	1	1	1	1	1	4	34	
Bracefield	100	100	1	1	1	1	1	107	1	1	1	1	1	1	1	1	1	1	
Bracefield	100	100	1	1	1	1	72	5	2	2	1	1	1	1	1	1	125	1	
Bracefield	100	100	1	1	1	1	97	5	4	3	3	3	3	3	3	3	40	1	
Bracefield	100	100	1	1	1	1	12	2	1	4	1	1	1	1	1	1	80	1	
Bracefield	100	100	1	1	1	1	51	35	1	1	1	1	1	1	1	1	57	107	
Bracefield	100	100	1	1	1	1	128	847	262	54	1	85	35	13	45	4	1781	765	
Bracefield	100	100	1	1	1	1	20	7	10	5	1	3	2	435	85				
Bracefield	100	100	1	1	1	1	1	1	1	1	1	1	1	62	52				
Bracefield	100	100	1	1	1	1	108	1	1	1	1	1	1	60	20				
Bracefield	100	100	1	1	1	1	39	9	1	1	1	1	1	419	80				

[illegible]

TABLE 73

SECRET

17 JUL 1957

Kre-EP's Living in Camps in the Hamburg Area

broken down by nationality

Polish	525
Latvians	460
Lithuanians	79
Russians	117
Ukrainians	424
Yugoslavians	134
Estonians	49
Czechs	26
Hungarians	11
Romanians	9
Bulgarians	3
others	112

2 018

SECRET

32-9-62-15

TABLE C

Numbers of Former Displaced Persons
accommodated in various camps of the Land
Mecklenburg
(as of 1st January 1955)

Hannover/Stukenburger Muehle	254
Hannover - Buchholz	740
Hannover - Sueder	210
Hannover - Buchholz	410
Diepholz	205
Witt-sheim/Gallwitz-Muehle	410
Hannover-Burton, Huthaus-Muehle	188
Goettingen (North-Burton)	121
Goettingen, Huthaus	241
Witt-sheim/Landwehr-Huthaus	274
Witt-sheim/Huthaus	469
Gerdel/Huthaus	314
Lingen/Huthaus	354
Seedorf/Landwehr-Huthaus	659
Witt-sheim/Huthaus	291
Braunschweig/Burton-Huthaus	1957
Braunschweig/Huthaus	677
Maritzburg/Huthaus	461
Witt-sheim/Huthaus	72
Oldenburg/Oldenburg	404
Oldenburg, Lager-Sandplatz	206
Oldenburg/Lager-Unternberg	105
Oldenburg/Lager-Air-Planer-Huthaus	113
Friedrichshof, Huthaus	580
Witt-sheim/Huthaus	350
Altenstein im Huthaus	870

1156

SECRET

32-7-62-15

Der Reichsausschuss für die
Flüchtlingsangelegenheiten
und Kriegswirtschaftsangelegenheiten

Hannover, 1st March 1954

Akt 18/2 Akt -22 75 01

SECRET

LIST OF CAMPS AND PERSONS

as of 1st August 1953

Total Compilation

Stadt Landkreis Regierungs- oder Verwaltungsbezirk	Refugee camps with more than 20 persons (inclusive camps in which Kriegsgefangenenhilfeempfänger are accommodated)			
	Total		amongst them KPH camps	
	number of camps	number of persons accommodated therein	number of camps	number of persons accommodated therein
Hannover - Stadt	3	270	1	40
Hannover - Stadt	12	4,100	3	1,102
Grafschaft Diepholz	20	800	19	854
Grafschaft Hoya	29	1,444	26	1,226
Grafschaft Schaumburg	3	105	1	32
Hannover - Pyramont	2	86	2	4
Hannover - "Land"	39	1,426	17	2,120
Neustadt a. Ruhe	22	1,001	11	1,015
Hildesheim / W. Vor	30	2,001	21	1,507
Schaumburg - Lippe	10	500	14	750
Springe	11	500	5	410
Reg. Bezirk Hannover	235	10,245	121	9,016
Göttingen - Stadt	-	-	-	-
Hildesheim - Stadt	5	48	5	231
Alfeld	-	-	-	-
Löhrl. teit	7	270	5	736
Einbeck	11	701	7	350
Göttingen - Land	3	109	-	-
Hildesheim - Martenberg	13	500	5	290
Helmstedt	10	500	5	307
Hannover	-	-	-	-
Hannover	10	100	5	120
Hannover (W. Vor)	20	1,000	10	1,000
Leine	22	1,000	5	500
Salzgitter	1	100	-	-
Reg. Bezirk Hildesheim	109	5,000	38	3,800

SECRET

32-7-62-15

S. 4 + Regierungs-Bezirk Verwaltungsbezirk	3. Lage der Flüchtlinge im 3. Quartal (statistische Angaben) 1. nach Wohnort der Flüchtlinge, 2. nach Herkunft der Flüchtlinge			
	Total		nach Herkunft der Flüchtlinge	
	Number of camps	Number of refugees in these camps	Number of camps	Number of refugees in these camps
Celle - Stadt	12	1.389	1	26
Lüneburg - Stadt	3	227	2	73
Welfsburg - Stadt	10	1.400	-	-
Burgdorf	21	1.400	-	-
Celle - Land	42	1.387	6	425
Fallingb. Ostel	20	1.388	2	461
Gifhorn	23	1.387	10	597
Harburg	10	622	-	-
Lehrte - D. B. B. B.	12	680	2	273
Lüneburg - Land	9	1.387	-	-
Saltau	24	1.387	2	1.577
Wilzen	14	1.387	-	938
Reg. Bezirk Lüneburg	202	21.354	39	4.737
Ortenau - Stadt	17	1.544	12	1.252
Frederickswalde	59	3.134	45	2.741
Land Wadelin	25	1.378	11	1.058
Osterholz	25	3.118	10	1.518
Rosenburg	12	1.047	5	819
Stade	53	3.363	50	5.074
Vörden	5	284	-	-
Wesermünde - Land	14	1.317	15	1.293
Reg. Bezirk Stade	212	17.857	142	13.778
Osnabrück - Stadt	14	758	10	261
Aachenloerf - Huermiling	19	820	19	620
Bersenbrück	53	1.985	42	1.400
Grafschaft Bentheim	27	3.544	15	1.225
Lingen	54	2.030	45	1.523
Melle	9	1.071	8	616
Harpen	21	1.261	13	566
Osnabrück - Land	35	1.843	7	233
Wittlage	12	612	10	559
Reg. Bezirk Osnabrück	244	13.803	149	8.046
Baden - Stadt	16	2.765	8	1.599
Aurich	25	1.722	13	1.395
Lier	19	2.171	5	1.043
Norden	39	4.740	25	3.343
Wittmund	33	3.145	20	2.404
Reg. Bezirk Aurich	152	14.543	96	9.794

SECRET

-) In addition 191 refugees from the 3. Quarter.

32-7-62-13

Standort Landkreis Regierungs- oder Verwaltungsbezirk	Refugee camps with more than 20 persons (inclusive camps in which Krippefellow prisoners are accommodated)			
	Total		amongst them KRM camps	
	number of camps	number of persons accommodated therein	number of camps	number of persons accommodated therein
Braunschweig - Stadt	32	4,025	9	2,617
Goslar - Stadt	5	529	-	-
Salzgitter - Stadt	44	7,190	21	6,048
Blankenburg (Rest)	6	140	-	-
Braunschweig - Land	8	340	5	250
Gandersheim	3	826	2	234
Goslar - Land	4	641	3	516
Helldorf	12	1,912	1	36
Wolfenbüttel	9	1,015	3	592
Verw. Bez. Braunschweig	128	17,532	44	10,255
Delmenhorst - Stadt	13	2,388	10	1,858
Oldenburg - Stadt	11	3,025	7	965
Wilhelmshaven - Stadt	25	3,344	8	2,059
Aurich	54	3,076	49	2,657
Oldenburg	40	1,891	32	1,594
Oldenburg - Land	77	1,701	66	1,450
Vechta	47	2,491	41	2,514
Vechta	34	1,313	32	2,124
Wesermündung	48	1,425	30	2,343
Verw. Bez. Oldenburg	451	30,441	275	20,966

Total Breakdown by Regierungsbezirk or Verwaltungsbezirk

Reg. Bez. Hannover	205	15,345	124	9,516
• • • Hildesheim	102	4,530	38	2,844
• • • Lüneburg	203	23,059	39	4,787
• • • Stade	112	17,357	100	13,778
• • • Garbsen	24	13,107	140	8,015
• • • Aurich	153	14,485	71	9,784
Verw. Bez. Braunschweig	128	17,532	44	10,255
• • • Oldenburg	451	30,441	275	20,966
Land Niedersachsen	1,423	102,187	933	79,975

32-112-13

TABLE

- (1) Hebrew Immigrant Aid Society
Rothenbaumchaussée 38 Hamburg, W. Ger.
 (Also known as United HIAS Service Inc.)
 Representative: Mrs Ruth Bochs. Employs also one (Mrs) FISHERN
- (2) World Council of Churches
Abteistrasse 15 Hamburg, W. Ger.
 Fluechtlingslager Lesum Bremen
 Representatives: Arthur S. JADE
 Donald ANDERSON
- (3) National Catholic Welfare Conference
Gr. Allee 41 Hamburg, W. Ger.
 Fluechtlingslager Lesum Bremen
 Representatives: Jerome J. LODGE
 Reginald POLLARIS
- (4) St. Raphael's Verein
Gr. Allee 41 Hamburg
 Representative: (Father) Friedrich Froehling, General Secretary
Oldenfelder Str. 23 Hamburg, W. Ger.
- (5) Lutheran World Federation
Evangelisch-Lutherische Auswanderungs mission
Hautenbergstrasse 11 Hamburg, W. Ger.
 Representative: Karl FEDDERN
- (6) Tolstoy Foundation Inc.
Abteistrasse 15 Hamburg, W. Ger.
 Representative: M. GUERARD (wife also employed as officer and sec'y)
- (7) Intergovernmental Committee for European Migration (ICEM)
Admiralitätsstrasse 46 Hamburg, W. Ger.
 Representative: Jea Schiltz, Belgian
Harvestehuderweg 96 Hamburg, W. Ger.
 ICEM Representative in U. S. Consulate, Hamburg:
 (Frau) Ingeborg Schade
Hamburg, Postelstweg 4, W. Ger.

37-7-62-15

TABLE "B" (Continued)

- (8) ~~American Polish War Relief~~
~~Adm. Strasse 12 III Hamburg, W. Ger.~~
 Representative: (fnu) ~~CHSOLA~~
- (9) ~~American Fun. for Czechoslovak Refugees Inc.~~
~~Adm. Strasse 30 Hamburg, W. Ger.~~
 Representative: Michael J. ~~HORKY~~
 Adm. Strasse 6 Hamburg, W. Ger.
- (10) ~~United Ukrainian American Relief Committee (UUARC)~~
~~Adm. Strasse 31 Hamburg, W. Ger.~~
 Representative: Julian ~~CHORNIJ~~
 Adm. Strasse 6 Hamburg, W. Ger.
- (11) ~~Hilfswerk der evangelischen Kirche in Deutschland~~
~~Katharinenkirchhof, Katharinenkirche, Hamburg~~
- (12) ~~United States Escape Program (UESP)~~
 Representative: ~~Julius HUBBELL~~
 Adm. Strasse 6 c/o American Consulate General, Hamburg, W. Ger.

[illegible]

514 1431 1432, 1433 1434 1435 1436 1437 1438 1439 1440 1441 1442 1443 1444 1445 1446 1447 1448 1449 1450 1451 1452 1453 1454 1455 1456 1457 1458 1459 1460 1461 1462 1463 1464 1465 1466 1467 1468 1469 1470 1471 1472 1473 1474 1475 1476 1477 1478 1479 1480 1481 1482 1483 1484 1485 1486 1487 1488 1489 1490 1491 1492 1493 1494 1495 1496 1497 1498 1499 1500 1501 1502 1503 1504 1505 1506 1507 1508 1509 1510 1511 1512 1513 1514 1515 1516 1517 1518 1519 1520 1521 1522 1523 1524 1525 1526 1527 1528 1529 1530 1531 1532 1533 1534 1535 1536 1537 1538 1539 1540 1541 1542 1543 1544 1545 1546 1547 1548 1549 1550 1551 1552 1553 1554 1555 1556 1557 1558 1559 1560 1561 1562 1563 1564 1565 1566 1567 1568 1569 1570 1571 1572 1573 1574 1575 1576 1577 1578 1579 1580 1581 1582 1583 1584 1585 1586 1587 1588 1589 1590 1591 1592 1593 1594 1595 1596 1597 1598 1599 1600 1601 1602 1603 1604 1605 1606 1607 1608 1609 1610 1611 1612 1613 1614 1615 1616 1617 1618 1619 1620 1621 1622 1623 1624 1625 1626 1627 1628 1629 1630 1631 1632 1633 1634 1635 1636 1637 1638 1639 1640 1641 1642 1643 1644 1645 1646 1647 1648 1649 1650 1651 1652 1653 1654 1655 1656 1657 1658 1659 1660 1661 1662 1663 1664 1665 1666 1667 1668 1669 1670 1671 1672 1673 1674 1675 1676 1677 1678 1679 1680 1681 1682 1683 1684 1685 1686 1687 1688 1689 1690 1691 1692 1693 1694 1695 1696 1697 1698 1699 1700 1701 1702 1703 1704 1705 1706 1707 1708 1709 1710 1711 1712 1713 1714 1715 1716 1717 1718 1719 1720 1721 1722 1723 1724 1725 1726 1727 1728 1729 1730 1731 1732 1733 1734 1735 1736 1737 1738 1739 1740 1741 1742 1743 1744 1745 1746 1747 1748 1749 1750 1751 1752 1753 1754 1755 1756 1757 1758 1759 1760 1761 1762 1763 1764 1765 1766 1767 1768 1769 1770 1771 1772 1773 1774 1775 1776 1777 1778 1779 1780 1781 1782 1783 1784 1785 1786 1787 1788 1789 1790 1791 1792 1793 1794 1795 1796 1797 1798 1799 1800 1801 1802 1803 1804 1805 1806 1807 1808 1809 1810 1811 1812 1813 1814 1815 1816 1817 1818 1819 1820 1821 1822 1823 1824 1825 1826 1827 1828 1829 1830 1831 1832 1833 1834 1835 1836 1837 1838 1839 1840 1841 1842 1843 1844 1845 1846 1847 1848 1849 1850 1851 1852 1853 1854 1855 1856 1857 1858 1859 1860 1861 1862 1863 1864 1865 1866 1867 1868 1869 1870 1871 1872 1873 1874 1875 1876 1877 1878 1879 1880 1881 1882 1883 1884 1885 1886 1887 1888 1889 1890 1891 1892 1893 1894 1895 1896 1897 1898 1899 1900 1901 1902 1903 1904 1905 1906 1907 1908 1909 1910 1911 1912 1913 1914 1915 1916 1917 1918 1919 1920 1921 1922 1923 1924 1925 1926 1927 1928 1929 1930 1931 1932 1933 1934 1935 1936 1937 1938 1939 1940 1941 1942 1943 1944 1945 1946 1947 1948 1949 1950 1951 1952 1953 1954 1955 1956 1957 1958 1959 1960 1961 1962 1963 1964 1965 1966 1967 1968 1969 1970 1971 1972 1973 1974 1975 1976 1977 1978 1979 1980 1981 1982 1983 1984 1985 1986 1987 1988 1989 1990 1991 1992 1993 1994 1995 1996 1997 1998 1999 2000 2001 2002 2003 2004 2005 2006 2007 2008 2009 2010 2011 2012 2013 2014 2015 2016 2017 2018 2019 2020 2021 2022 2023 2024 2025 2026 2027 2028 2029 2030 2031 2032 2033 2034 2035 2036 2037 2038 2039 2040 2041 2042 2043 2044 2045 2046 2047 2048 2049 2050 2051 2052 2053 2054 2055 2056 2057 2058 2059 2060 2061 2062 2063 2064 2065 2066 2067 2068 2069 2070 2071 2072 2073 2074 2075 2076 2077 2078 2079 2080 2081 2082 2083 2084 2085 2086 2087 2088 2089 2090 2091 2092 2093 2094 2095 2096 2097 2098 2099 2100 2101 2102 2103 2104 2105 2106 2107 2108 2109 2110 2111 2112 2113 2114 2115 2116 2117 2118 2119 2120 2121 2122 2123 2124 2125 2126 2127 2128 2129 2130 2131 2132 2133 2134 2135 2136 2137 2138 2139 2140 2141 2142 2143 2144 2145 2146 2147 2148 2149 2150 2151 2152 2153 2154 2155 2156 2157 2158 2159 2160 2161 2162 2163 2164 2165 2166 2167 2168 2169 2170 2171 2172 2173 2174 2175 2176 2177 2178 2179 2180 2181 2182 2183 2184 2185 2186 2187 2188 2189 2190 2191 2192 2193 2194 2195 2196 2197 2198 2199 2200 2201 2202 2203 2204 2205 2206 2207 2208 2209 2210 2211 2212 2213 2214 2215 2216 2217 2218 2219 2220 2221 2222 2223 2224 2225 2226 2227 2228 2229 2230 2231 2232 2233 2234 2235 2236 2237 2238 2239 2240 2241 2242 2243 2244 2245 2246 2247 2248

DATE: 10/10/1975

ALL INFORMATION CONTAINED HEREIN IS UNCLASSIFIED

1. The first group of respondents (Group 1) consisted of 100 individuals who were randomly selected from the population of 1,000 individuals. The second group (Group 2) consisted of 100 individuals who were randomly selected from the population of 1,000 individuals. The third group (Group 3) consisted of 100 individuals who were randomly selected from the population of 1,000 individuals. The fourth group (Group 4) consisted of 100 individuals who were randomly selected from the population of 1,000 individuals. The fifth group (Group 5) consisted of 100 individuals who were randomly selected from the population of 1,000 individuals. The sixth group (Group 6) consisted of 100 individuals who were randomly selected from the population of 1,000 individuals. The seventh group (Group 7) consisted of 100 individuals who were randomly selected from the population of 1,000 individuals. The eighth group (Group 8) consisted of 100 individuals who were randomly selected from the population of 1,000 individuals. The ninth group (Group 9) consisted of 100 individuals who were randomly selected from the population of 1,000 individuals. The tenth group (Group 10) consisted of 100 individuals who were randomly selected from the population of 1,000 individuals.

1. On 10/10/1971, the 1st Army, Vietnam, advised that a group supporting the 1st Army, Vietnam, had been identified. This group was identified as the 1st Army, Vietnam, and was identified as the 1st Army, Vietnam, and was identified as the 1st Army, Vietnam. (10/10/71)

[illegible]

1. The first of these is the fact that the Government has not yet decided whether it will accept the offer of the United States to purchase the surplus stocks of the Government. This is a very important question, and it is one which the Government has not yet decided. It is a question which the Government has not yet decided.

IN 20105
LOND. 919
7 Aug 47

CONFIDENTIAL

INTERNATIONAL RESCUE & RELIEF COMMITTEE
GERMAN BRANCH

Director - Mrs. Louis Fischer

Report on Russian Refugees & Escapees

In Western Germany and Austria today there are thousands of Soviet nationals who either succeeded in escaping the attention of the M.V.D. at the end of the war or else had made their way through the Iron Curtain since that time. Many of these are persons of the highest caliber, some of international reputation. They ask nothing more of the democracies than the opportunity to offer their services in the struggle against Soviet totalitarianism.

Unfortunately there exists among these refugees a wide-spread fear of detection by local communists or M.V.D. agents. Because of I.R.C.'s long established reputation as an organization upon which anti-totalitarian refugees may rely, many refugees who had such hesitations about approaching the occupation authorities, have come to I.R.C. to ask its assistance.

The paragraphs that follow briefly describe the cases of four typical Soviet refugees.

VLADIMIR BRAILOWSKY

Vladimir Brailowsky was one of the Soviet Union's foremost physicists. He was associated with the nuclear laboratory of the Physical Technical Institute at Kharkov from 1932 to 1942, and for the last two years of his association he was the Senior Scientific Worker of the Institute. From 1935 to 1941, he was also chief of the Physics Department of the Institute of Medical Research. He is the author of a number of works on nuclear physics, in Russian and French.

Deported to Germany in 1943, he worked as a slave laborer until the liberation. Although he was one of the men the Soviets were most anxious to recover, he refused to return and succeeded in eluding the M.V.D. agents.

PAUL LYSENKO

Dr. Lyssenko is the brother of the famous Soviet academician of the same name. A chemist of national repute in the Soviet Union, Lyssenko was on the staff of the Scientific Experimental Institute in Kharkov from 1932 to 1942 and is the author of over thirty scientific works in the field of coke chemistry. Deported to Germany as a slave-laborer in 1942, he and his wife refused to return to Russia when the war was over, even though they could have enjoyed positions of high importance there. Despite the many restrictions and hardships that he encountered as a D.P., he worked out a novel method for the extraction of syrup and alcohol from chestnuts.

and obtained permission to open a small factory. The quality of his products has been highly commended by competent quarters. Dr. Lyssenko has also developed and tested a method which, he reports, could result in the utilization of 40-50% of the currently unused by-products of the American coke industry.

MR. KARPENKO

Mr. Karpenko is a Ukrainian civil engineer who is at present employed as an instructor at the Garmisch Intelligence School of C.I.C. In addition to being a qualified engineer he has taken a degree in Philology and he has also worked as a miniaturist and as the art director of the Toy Factory. In the Soviet Union, due to the fact that he belonged to a "socially alien class" he was deprived of his electoral rights and, therefore, did not serve in the army. He was forcibly evacuated by the Germans in 1944. His application for visa has been backed by C.I.C.

GREGORY PODOLAK

Professor Podolak is a Ukrainian writer and literary critic of note who has spent time in both Bolshevik and Nazi prisons. In 1927 - '28 he was a member of the editorial staff of the important Ukrainian magazine VAPOLITE, which had concentrated around it a strong literary humanistic movement. The group enjoyed only a brief period of relative freedom, until it was ruthlessly destroyed by the deportation or execution of all its leading members. The movement experienced a resurgence during the war and fought against the Nazis on the one hand and the Stalinists on the other, suffering terrible persecution from both, losing many of its members through torture or suicide.

Professor Podolak was deported to Germany as a slave laborer in 1943. In a note written about himself he said, "By profession I am, 1) a weaver, 2) a vegetable gardener, 3) a housecleaner, dishwasher, janitor, and unskilled laborer." He has been highly recommended by David Dallin and approved by C.I.C.

Here are men who not only are extremely capable in specialized fields but -- what is more important -- who can vastly expand our understanding of the Soviet Union and the Soviet mentality. They are men who have a great contribution to make to the western democracies and who are more than eager to serve them. But so far they have been probably less favored than any other group of refugees. For the most part they continue to lead a difficult and precarious existence, continually hunted by Soviet agents. Kidnappings, "suicides", disappearances, etc., occur constantly and such acts are often assisted by local communist organizations.

Where government agencies are frequently unable to act, a private agency unencumbered by government red tape, is in a position to do much. The IIRC believes that it is particularly qualified to deal with this problem because of its long experience in assisting anti-totalitarian refugees and because of the very careful selection of its field staff. In the case of the

3.

Soviet refugees at present in Europe, both humanity and national self-interest dictate that this assistance be given as soon as possible. In concrete terms this means in the first place, providing these refugees with food and clothing and medical care and counsel; in the second place, it means providing them with haven in the United States or one of the other western democracies.

NASH-REG-INT 152

X002-712

12 July 1944

MEMORANDUM

For: SAINT, Washington - 2H/125 and 1H/101

From: AH/GAI

Subject: Leon Phillip DELEMBERG for SAINT, 1H/101

1. Subject arrived in Turkey on 8 June 1944, and is staying at the Park Hotel.
2. Subject is a private American citizen representing the "International Rescue and Relief Committee" which, we understand, is engaged in "rescuing" intellectuals from Europe.
3. It has been reported reliably that subject has engaged in discussions of his "work", and his relationships with certain Turks who are not in the government, in a loud tone of voice in the Park Hotel within earshot of German residents. Subject stated that everyone knew that the present Turkish Government was bad and that the good elements were just waiting to form their own government.
4. In view of the fact that such indiscretions are damaging to Americans and American policy in Turkey, request that you investigate background of this man and inform us. Should further indiscretions come to our attention, we will revert then and request that you take the matter up directly with his own organization or with the State Department.

Distribution: SAINT WASHINGTON

REC'D 11 3 00 PM '44
RECEIVED DEPT. OF STATE

International Rescue and Relief Committee

Incorporated

103 PARK AVENUE, NEW YORK 17, N. Y.

LExington 2-7916

January 30, 1945

Honorary Chairman
Charles A. Beard

Chairman
Frank Kingdon

Vice-Chairmen
Freda Kirchway
Sterling D. Spero
Ingrid Warburg
L. Hollingsworth Wood

Treasurer
David F. Seiferheld

Executive Secretary
Sheba Strunsky

National Committee
Roger Baldwin
Paul F. Brissenden
Stuart Chase
George S. Counts
Frank Crowninshield
Margaret De Silver
John Dewey
Lewis Gennett
Harry Gideonse
James G. Heller
John Haynes Holmes
William H. Kilpatrick
Wesley C. Mitchell
Reinhold Niebuhr
William Allen Neilson
John Dos Passos
Cecilia Rosovsky
Abba Hillel Silver
Upton Sinclair
Dorothy Thompson
Oswald G. Villard

Mr. Earl Brennan
Main P.C. Box 1929
Washington 13, D.C.

Dear Mr. Brennan:

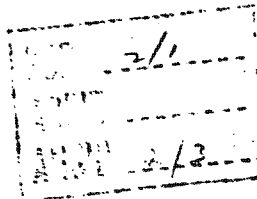
Since we received no reply to the message we asked you to transmit to Italy for us some time ago, I have taken the liberty to enclose another message which I ask you to transmit for us if possible.

Thanking you in advance for your kind cooperation, I am,

Very sincerely yours,

Sheba Strunsky
Sheba Strunsky
Executive Secretary

SS/ir
Enc.



International Rescue and Relief Committee
Incorporated

103 PARK AVENUE, NEW YORK 17, N. Y.

LExington 2-7916

Honorary Chairman
Charles A. Beard

Chairman
Frank Kingdon

Vice-Chairmen
Freda Kirchwey
Sterling D. Spero
Ingrid Werburg
L. Hollingsworth Wood

Treasurer
David F. Seiferheld

Executive Secretary
Sheba Strunsky

National Committee
Roger Baldwin
Paul F. Brissenden
Stuart Chase
George S. Counts
Frank Crowninshield
Margaret De Silver
John Dewey
Lewis Gannett
Harry Gideonse
James G. Heller
John Haynes Holmes
William H. Kilpatrick
Wesley C. Mitchell
Reinhold Niebuhr
William Allen Neilson
John Dos Passos
Cecilia Rozovsky
Abba Hillel Silver
Upton Sinclair
Dorothy Thompson
Oswald G. Villard

November 27, 1944

Mr. Earl Brennan
Main P.O. Box 1929
Washington 13, D.C.

Dear Mr. Brennan:

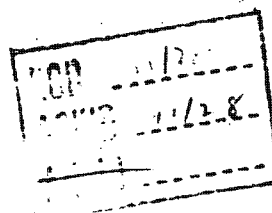
Will you kindly transmit
the enclosed message to Mr. Montana.

Very sincerely yours,

Sheba Strunsky
Sheba Strunsky
Executive Secretary

SS/1r
Enc.

*Not sent because of
Jen. no return.*



November 27, 1944

MR. VANNI BUSCEMI MONTANA

SENT LUSSU FIVETHOUSAND DOLLARS ORDINARY MAIL
HOPE IT WILL BE POSSIBLE CABLE ADDITIONAL FIVE
EARLY DECEMBER STOP DENNEN JOHN ENROUTE TO
ITALY STOP CABLE US ON NON-ITALIAN REFUGEE
CONDITIONS ITALY AND WHEN YOU PLAN TO LEAVE

SHERA STRUMSKY

See Zerrone for Counselor's
interest comments.

DRAFT THREE

1. The first step is to identify the key components of the system. This includes understanding the hardware, software, and data involved.

[illegible]

"International Rescue and Relief Committee"

Italian Branch - Rome - via Aurora 31

Rome, 1 March 1945

Mr. FRANK KILGOM, Mrs. SIMBA STRUGKY

We have received the sum of \$10,000 on 14 January 1945. It is a month and two weeks, therefore, that our office is operating.

We have not been able to confirm the receipt of said sum by radiogram because of the difficulties encountered at present in Italy in making use of such means of communication.

We have carried out your instructions relative to the names you sent us by radiogram in January and February. Simon Bachauer was not found at the address given. We are awaiting further clarification on the matter.

The clothes which you mentioned in your first radiogram have not reached us as yet. Please inform us as to the date they were shipped.

We hope to send you a report on our activities by the end of this month.

In the future, instead of sending money or instructions to Via Aurora 43 you should address directly to our offices at Via Aurora 31.

Cordially,

s/M. Matteotti

U. S. Marine

March 20, 1945

Mrs. Sheba Strunsky
Executive Secretary
International Rescue and Relief Committee
103 Park Avenue
New York, New York

My dear Mrs. Strunsky:

I have just received from my Chief Deputy in Italy the attached communication addressed to the International Rescue and Relief Committee which, I am informed by my Deputy, is from Matteo Matteotti. I presume this communication is in reply to one which we forwarded on your behalf a number of weeks ago.

Very sincerely yours,

Earl Brennan
Earl Brennan

Attachment: Letter, as described above

cc

May 7th, 1942.

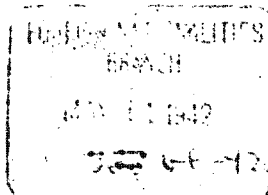
1) New Beginners.

The German Social Democracy had been bankrupt for years before Hitler's accession to power. His appointment to the chancellorship of the Reich by the senile President von Hindenburg was simply the official recognition of a fact generally known for some time.

Two main reasons brought about the breakdown of the Social Democratic Party. First, the spiritual and tactical weakness of the once proud militant party of August Bebel and Wilhelm Liebknecht. Secondly, the treacherous tactics of the Moscow-directed Communist Party which, through its flirtation and active cooperation with the National Socialist Party, expected to fall heir to whatever would be left of the Social Democracy. It is history now that Hitler harvested the fruit of Moscow's va banque policy.

In the fall of 1933 a pamphlet "New Beginning - Fascism or Socialism" was published in Karlsbad, Czechoslovakia. Its author "Hiles" condemned the German Social Democratic Party and particularly its leadership severely, demanding a sharp turn to the Left if Socialism should survive this crisis.

Several months before Hitler's coming to power certain Leftists within the Social Democratic Party had met secretly in Berlin, organizing a group which was to gain recruits in the more important cities and industrial districts for a Left Wing of the Social Democratic Party. It was the intention of these New Beginners, as they called themselves, to work within the framework of the old party, trying to force a more



11:2-10
4.11
4.2
4.14

2) New Beginners.

radical policy on the S.D.P.

The Manifesto of the New Beginners group contained, what it called the central thought of the movement. We find it reproduced in the Miles pamphlet:

"...Marxism alone is the key to the Socialist transformation of the world," it read. "The Socialism that is to come will be nothing if not Marxist...It is not the Marxism of the Socialist parties that has failed; it is rather the Socialist parties that have failed because they have not been Marxist enough. The more firmly the Socialist parties base their theory and practice on Marxism, the more easily, the more rapidly and the more certainly will they accomplish the great tasks which history has laid on them."

Eighteen months before the organization of the New Beginners, another Social Democratic secession had taken place - the Sozialistische Arbeiter-Partei (Socialist Labor Party). This party placed the same emphasis on Marxism as being the life blood of Socialist practice. But the S.L.P. had failed miserably. Marxism did not save the New Beginning groups either. They both remained anemic plants, unable to live and still less able to die.

"Miles", the author of the first New Beginners pamphlet, ^{Paul Weyland} was Dr. Karl Frank who had served as lieutenant in an Austrian artillery regiment during the World War. From the army he went straight to Munich, participated in the Bavarian Soviet government and from there to Berlin, where he joined the Spartakus Bund and a few months later became a charter member

3) New Beginners.

of the Communist Party of Germany.

Here he advanced quickly. The German Communist Party had few intellectuals in its ranks and Frank, who had been writing in the Wiener "Arbeiter-Zeitung" before he joined the army became almost immediately a member of the staff of the "Rote Fahne", the official party organ. In 1924 he was appointed editor of the "Rote Fahne" and was regarded as the confidential man of the Comintern, the executive body of the Communist International. He remained with the Communist Party until the beginning of 1931, left it to join the (Right Wing) Brandier-Thalheimer Communist opposition group, and went from there into the Social Democratic Party, where he was responsible for the organization of the New Beginners groups. People who are familiar with the inner workings of the Comintern and who have known Frank since 1919 insist that he always has been employed by the Communist International, that he was also a G.P.U. man. They also insist that he is still in the employ of the inner circle of the Communist International.

I met him first in Vienna in October 1933, when he called me up at my hotel and expressed the wish to discuss important party matters with me. He came to me under the name of G. Mueller, and we discussed the organizational possibilities of the "New Beginning". He promised to send me material to New York which some time later enabled me to write an article on the new movement for the New Republic, which was published there in July, 1934.

Later I met him on and off in New York on his trips to

4) New Beginners.

collect funds for his group and for underground work in Germany. With the aid of the League for Industrial Democracy^{2.4} and its Secretary, Mrs. Mary Fox (at whose apartment he lived), who introduced him to the large circle of well-to-do unattached ladies here (Frank is a great ladies' man) he collected relatively large sums. These ladies, all anxious to "do something for the cause" arranged dozens of luncheons and suppers for him and he could truthfully boast of his great success.

There have been all sorts of accusations against him for alleged misuse of these funds, for the lack of control and audit of these funds, etc. (by an M.P. of the British Labor Party, by the Jewish Daily Forward^{3.1} and the Neue Volkszeitung^{3.1}, etc. etc., but his friends here -- Professor Reinhold Niebuhr^{1.6} and other leading members of the League for Industrial Democracy stood and stand by him and vouch for his intellectual and physical integrity. As far as I know, his group does not control any, not even a small, organization in Germany and recent newcomers from Europe assure me that there never was any group worth mentioning connected with the Frank organization which did underground work. They say that Dr. Frank -- who lives in the United States under the name of Paul Hagen -- and the stories he tells at private and semi-public meetings, are 90% bluff.

^{3.2}
The "Inside Germany" reports which are issued in Dr. Niebuhr's name, are edited by Dr. Frank. I was present at a

5) New Beginners.

dinner of Dr. Niebuhr's group last winter in support of "Inside Germany" at which he was eulogized as the man who is responsible "for the existence of a net of radical underground organizations in the Third Reich which finally will be the lever to overthrow Nazi tyranny". This and similar twaddle has been circulated all over the United States and there are many who really believe it. That Dr. Niebuhr should be so easily taken in passes my comprehension. That he knowingly makes use of a "false alarm" I am most reluctant to believe.

More recently Frank-Hagen has been helpful in bringing in Stalinists into the United States and keeping anti-Stalinist radicals out. This has been made possible by his close association with ^{Suppl 1.6} Miss Warburg (now Mrs. Spinelli) and his cooperation with her work for the "Emergency Rescue Committee", ^{2.10 Committee} nominally directed by Dr. Frank Kingdon. This organization was merged recently with the "International Relief Organization", ^{1.6} directed by Miss Strunsky, as the "International Rescue Relief ^{2.10 Committee} Committee". Several such cases have come to my attention and they strengthen the opinion of those who know that he is still working for the Comintern or for some one of its sub-divisions. One former Communist who held a very prominent position in the European Communist movement holds to the firm conviction that all of Frank's party wanderings inside and outside of the Communist Party were under direct orders from "above". Whether this is true or not, I, of course, can only speculate. That sort of thing defies proof.

14-00000

SECRET

D. C. Foote

May 12, 1942

The Honorable Allen W. Dulles

GE-92

No doubt your files contain material relating to the German leftist group in New York called Newes Beginnen, or sometimes the New Beginners; also with respect to the leader of this group, Paul Hagen, alias Earl Frank.

The attached memorandum on the New Beginners has just been received by us from a collaborator who was formerly a member of the Communist Party and is believed to be, on the whole, well-informed with respect to the matters on which he writes in this memorandum.

Your attention is particularly invited to the contact which Paul Hagen appears to have with Dr. Frank Kingdon's Emergency Rescue Committee. According to my recollection, Mrs. Eva Pfister is active in the work of this Committee. I remember once asking Mrs. Pfister about her relationship to the Newes Beginnen, and I do not remember that I had any very satisfactory answer.

14-00000 - D.C.F.

DCP/cpc

Fulle
S.C.P. F.A.B.

NE/ISR

427

International Rescue Committee, Inc.
386 Park Ave. S., New York 10016

Report on the Russian Refugee Emergency in
Rome, 21 Feb 74 (filed 4135.5)

ref attached

IRC

FOUNDED 1933

INTERNATIONAL RESCUE COMMITTEE, INC.

355 PARK AVENUE SOUTH • NEW YORK, NEW YORK 10015 • 679-0310

OFFICES

Ames, Hamburg, Hong Kong, Madrid, Mexico City, Montreal, Munich, Nuremberg, Paris, Rome, Saigon, San Juan, Stockholm, Tanzania, Trieste, Vienna

REPORT ON THE RUSSIAN REFUGEE EMERGENCY IN ROME

1. In compliance with a directive of IRC's Executive Committee I spent the week of January 21 through January 25 in Rome in order to assist our Rome office in overcoming the complex organizational difficulties created by the sudden appearance of 200 Russian Jews from Israel who, during the first ten days of January, had applied for help and resettlement services. With this mass intake, as it were, our Russian caseload in Italy -- including a handful of non-Jewish emigres and a dozen or so mixed families who had come to Rome from Vienna -- had shot up to 605 people belonging to 232 family units. This was the overall registration figure by the middle of January.

The problem had its origin in the September 9 decision of the United HIAS Service and the Joint Distribution Committee not to provide further financial aid and resettlement to Russians arriving in Rome from Israel. When HIAS-Rome was unable to accept them, they turned to IRC. We could not turn them down. Somebody had to help them.

Prior to the year-end influx, 92 Russian Jewish refugees processed by our Rome office had left for the United States or, in a very few instances, for other destinations. For a minority of them, resettlement in the United States was handled by ourselves with the backing of the ACJ Philanthropic Fund. The vast majority, however, were accepted by local Jewish Family Services and the New York Association for New Americans (NYANA) through the good offices of HIAS-New York.

2. The chaotic situation brought about by the pressure of a large and compact group of refugees almost broke the back of our small staff and disrupted our limited facilities in Rome. As a rule, refugees are placed in refugee camps in Italy, and our headquarters set-up, consisting of only three people operating out of a three-room office, was utterly inadequate to cope with 80 to 100 people who presented themselves each day with a myriad of individual needs. Threatened with eviction, we rented space in one of the boarding houses open to refugees. But these premises had to be vacated when masses of people blocked the street and the staircases of the building where our workers were trying to listen to their requests. Temporary quarters were found in the hostel of the Salvation Army. When we were asked to leave the hostel, we moved, on January 22, to a hall beside the main railroad station

of Rome which is used by the Migration Department of the Italian Ministry of Labor for the processing of Italian workers signed up for employment schemes abroad, and by the Intergovernmental Committee for European Migration (ICEM) as a collection point whenever there is an ICEM flight. As of February 21 we are still working out of this area, unsuitable as it is, since more permanent and more suitable space could not be located. It is uncertain how long we will be permitted to remain there.

3. ^XGarret Ackerson, our European Director, ^XGaynor Jacobson, the Executive Vice President of HIAS, and also the Director of the HIAS-Geneva office came to Rome while I was there. It was Garret Ackerson who had alerted us to the untenable conditions he had witnessed in Rome during his previous visit and to the unconscionable burden we had placed on our representatives, ^XRade and ^XViolet Korach, whose sterling performance was a bright chapter in what otherwise is a disturbing story.

The IRC staff was expanded to seven people during my stay in Italy. Unrelated to my presence was another development which enabled us to bring a modicum of order into the chaos that had prevailed during the first two weeks of January -- the unexpected stop in the flow of newcomers which occurred on January 17. On that day we learned that Italy had ceased issuing visas to Russians trying to leave Israel. Instead, all applicants were told that their requests would be referred to the Ministry of Foreign Affairs. As of the writing of this report, only about a dozen new cases have reached Italy. We have not been informed of the selection criteria, if any, which led to the issuance of their visas by the Italian Consulate in Israel. In any event, by the middle of February our overall Russian caseload had risen from 600 to about 620, of whom about 170 had left for the United States or, some, for other places. This means that as of now roughly 450 are being taken care of by IRC-Rome. All but about 100 of them appear to be eligible for admission to the United States and, hopefully, will come here soon.

4. The matter of eligibility for U.S. immigration hinges on the type of passport these people have. Newcomers to Israel who are absorbed under the Law of Return are given light blue passports, marked "Laissez Passer," if they leave Israel within one year of their arrival. They are considered admissible to the United States under the special parole program approved by the Attorney General last year. Those who remain longer than one year are issued dark blue passports, the same as are given to any other citizen of Israel. Bearers of these passports have been ruled ineligible under the refugee provisions of our immigration statutes, presumably because the color of the passport denotes firm resettlement in Israel.

This distinction cannot be substantiated. If anything, the light blue passport may indicate a greater degree of economic adjustment than the dark blue passport. In order to obtain travel documents, the newcomer from Russia has to repay some expenditures the Jewish Agency incurred in his resettlement. He also has to scrape together enough money to buy his plane ticket to Rome. People who have been unemployed for any length of time, or who have been underemployed, are less able to acquit themselves of this financial responsibility. It's likely to take them more than one year to reach the required level of mobility, or that's what I was told again and again by those who hold passports of the darker hue. Thus, whenever I tried to explain the distinction between the two types of pass-

least seven years. Why should we insist that in another setting it invariably takes only one year and one day to shed one's refugee identity? A technical, narrow approach is no answer to an unresolved human problem. And one wishes this simple truth were recognized not only by the United States Refugee Program (USRP) without whose generous understanding the whole relief operation in Rome would have collapsed long ago.

7. Since returning from Italy I have been troubled by the apprehension that a loss of hope resulting from a lack of compassion might create a psychology of desperation which could lead some of the people in Rome to ask for repatriation to the Soviet Union. To permit things to deteriorate to this point would be a grave disservice not only to Soviet Jewry but to all other nationalities who are trying to emulate the Jewish example and are beginning to claim their right to leave Russia. That's why it would be so important that the major Jewish organizations reactivate their involvement with this small group out of Israel; that's why we will have to reason with the Immigration and Naturalization Service when it denies refugee status to passport holders; and that's why it would be important that other outlets be opened up in countries like Canada and perhaps Australia and New Zealand.

8. I did not try to talk to the Russian returnees from Israel who are now living in Vienna's Malagasse waiting for permission to go back to Russia. On November 20, 1973, of the 237 people in this group 199 were still in Austria. Twenty-one had been accepted by the Soviet Union, nine had gone to other countries, six returned to Israel and three had died. As for the continuing movements of Russian Jews through Austria, the figures were particularly high during the last three months of 1973 bringing their total well above the 20,000 level for the entire year. The arrival rate dropped in January to about 2,200 of whom, I was told, about 8% did not go on to Israel but requested help to go to other countries, mainly the United States. They were sent on to Rome where HIAS runs an exemplary resettlement program. It is to be hoped that the improved counseling now available in Austria will reduce the number of those who proceed to Israel without being firmly decided to stay in Israel and make a go of it.

9. While I was in Rome, the Italian press echoed the oil-related overtures of the Italian government to several Arab countries. There has also been a recrudescence of anti-Semitic outpourings. An unworkable, primitive explosive device of sorts was deposited in the ICIM work area -- the space we occupy now -- at the ER Station, and several voluntary agencies, including the IRC, received anti-Semitic press clippings in the mail. These things can -- and do -- happen elsewhere. But I could not free myself from the impression that Rome is an unhealthy place for large groups of Jewish refugees who have nowhere to go. For those who can come to the United States, speedy acceptance by the Jewish Family Services and JAFSA would be of great help. Their "transit" in Rome should not stretch out beyond the absolute minimum into a stay of indefinite duration.

X Charles Sternberg

New York
February 21, 1974

ER 8-3941

JUL 11 1956

Mr. Leo Cherna
Executive Director
The Research Institute of America, Inc.
289 Fifth Avenue
New York 17, New York

Dear Leo:

*Subj: ** I was glad to have the opportunity to
hear about the continuing activities of the
International Rescue Committee.

We are interested in and appreciate your
keeping us informed on the various activities
of the IRC.

Sincerely,

Allen W. Dulles
Director

FP/ICD/Prop: AWebster:vpp (20 Jun 56)
Rewritten - O/DCI/ (10 Jul 56)
Rewritten - O/DCI/JSE/mfb (12 Jul 56)
Distribution:

Orig - Addes

- 1 - DCI
- 1 - ER *W. L. Davis*
- 1 - Reading
- 1 - FP/ICD
- 1 - FP/ICD/Prop
- 1 - RI via DD/P

28 March 1950

MEMORANDUM TO: Ambassador Harriman

FROM: A. E. Jolis

SUBJECT: International Rescue Committee

1. The International Rescue Committee is a relief organization which has administered aid to political victims of totalitarian persecution since 1933, for the most part victims of Nazi, Fascist, and Communist persecution. Whereas in the years prior to and during the war most of the recipients of its aid were anti-Nazis, it has never rendered aid to Communists or Fellow Travellers simply because they qualified as anti-Nazis.

Since 1945 when the victims of Nazi persecution either returned to their homelands or were cared for by other organizations, the International Rescue Committee has devoted most of its attention to Stalinist persecutees.

2. The International Rescue Committee is a private organization. Attached hereto are specimens of descriptive literature showing the names of its sponsors and the type of appeal it makes to the American public. It is currently engaged in a nation-wide fund-raising drive in the United States under the banner of THE IRON CURTAIN REFUGEE CAMPAIGN.

During 1949 the Committee raised through private channels approximately \$400,000. During the same period it received a grant from I.R.O. of approximately \$725,000. The funds available to it, therefore, were approximately \$1,125,000. Overheads are kept to a minimum, and the total of fund-raising costs and administrative expenditures are kept below 10 per cent. of the total revenue.

3. The work of the Committee consists in helping escapees from behind the Iron Curtain. The Committee maintains offices in Turkey, Austria, Germany, Italy, Sweden, and France. The nature of the aid rendered varies according to circumstance. Persons crossing into the free zones from behind the Curtain who find their way to the Committee's premises may receive small money grants, CARE packages, or clothes depending upon their most immediate needs.

The

14-00000

The Committee then attempts to obtain some kind of legal status for these persons through the Occupation Authorities. In Italy, Turkey, Sweden, and France, of course, this problem does not arise.

The Committee concerns itself only with those escapees who show evidence of any genuine belief in democracy. This general statement, of course, requires more amplification than this short memorandum can carry. What is meant briefly is that the Committee does not render aid to former Iron Guardists and persons of similar political stripe in other satellite countries. In the case of Soviet exiles a "genuine belief in democracy" is hard to determine, and as a general rule all Soviet escapees are aided.

Since the war the International Rescue Committee has succeeded in bringing to the United States some of the most prominent leaders of the Democratic movements of Eastern Europe and the Balkans. Among these can be numbered Dimitrov, former leader of the Agrarian Peasant Party in Bulgaria; also prominent Peasant leaders, Social Democrats, and Christian Democrats from Hungary, Poland, Roumania, and the Baltic countries.

*7. An American friend
of the I.R.C. has
written me, Sept. 2, 1947*

The Committee also brought to the United States Pavlov D. Lysenko, brother of the famous Soviet geneticist, and in his own right the leading coal chemist of the Soviet Union who directed all of the coal research in the Donets Basin. Many other persons of great potential value to the United States have been brought to the United States, and large numbers of others are currently being cared for in Western Europe, among whom for instance is one of the leading Soviet cartographers whom the Committee has so far been unable to bring to the United States.

4. Among other important persons whom the Committee has rescued in Europe can be numbered Ernst Reuther who was found in hiding in Turkey in 1944 and whom the Committee rushed to Berlin as soon as that city was occupied. The courage of Ernst Reuther was perhaps decisive in rallying the population of Western Berlin against Soviet threats.

Another person rescued by the Committee was Mrs. Euber-Neumann, widow of the former German Communist leader, whose testimony at the Kravchenko trial on the subject of

Soviet

Soviet Slave Camps startled the world. Mme. Neumann was found in Ravensbrück Concentration Camp by advance Allied troops. The Committee took her to Sweden where she underwent a long convalescence. The above examples are merely illustrative. Hundreds of people are daily making contact with the Committee's representatives in Western Europe. Among these may be found representatives of the intellectual and scientific leadership of Eastern Europe whose potential value to the United States cannot be measured. The writer earnestly believes that this work is of the highest national importance to our country and should be expanded.

5. At the present time the major portion of the funds available to the Committee has been cut off. In anticipation of the closing of I.R.O., the financial grants which the Committee formerly received have now ceased. This means a loss of \$725,000, which threatens to reduce the Organization's activities by approximately 60 per cent. Such a course is unthinkable. The Committee is redoubling its private fund-raising efforts in an attempt to make up for the deficiency. But it must be recognized that in spite of such efforts, it is doubtful whether private fund-raising will yield more than approximately \$400,000 to \$500,000, which is about the maximum quantity that an organization of this kind can raise.

With the funds available to the Committee during 1949 it was possible to do no more than scratch the surface of this vast problem. The need is so far greater than the availability that three or four times this amount would perhaps not be adequate. It is, however, vital that the Committee be not obliged to reduce its activities. Consequently it is urged that assistance from other sources be obtained at the very least to compensate for the loss of I. R. O. support.

6. Attached hereto are copies of letters from General Clay and Ambassador Murphy, together with supporting statements from General Bedel-Smith and Admiral Byrd.

- Encs.:
- 1) Letter from Gen. Clay
 - 2) Letter from Amb. Murphy
 - 3) Statement Adm. Byrd
 - 4) Statement Gen. Bedel-Smith
 - 5) Specimens of Descriptive Lit.