

MESSAGE FORM  
TOTAL COPIES: *R*

TO: Robert Bladergroen:new  
 FROM: *RS*  
 DATE: 30 June 1967 *R-1835*

**SECRET**

CLASSIFICATION:  INDEX  DESTROY  FILE IN CS FILE NO. *201-300985*

BY: *15* FILE NO. \_\_\_\_\_

COPIES: *06C 2*  RID COPY

INFO: FILE .VE *clwH/cog 5, clwH 6*

SEARCH  FILE RID

BRANCH  FILE RID

RS 201-300985 SEC

*del ADP*

(classification) (date and time filed) (initial) (reference number) (date)

**SECRET**

CITE DIRECTOR

TO PRIORITY JMWAVE

30 15 49Z

15915

KAPOK TYPIC

AMCLEVE-15

REF DIRECTOR 15805

1. REQUEST STATION TRACES ALBERT LARRAIN MAESTRE.
2. DEPARTMENT OF JUSTICE ADVISES HE A FUGITIVE UNDER NARCOTICS INDICTMENT AND ALLEGEDLY ADMITTED TO AMCLEVE-15 HIS INVOLVEMENT IN BOMBINGS WITH ROSENTHAL. REQUEST STATION COMMENT AMCLEVE-15 EVER RECEIVE SUCH ADMISSION FROM LARRAIN MAESTRE.
3. NO HQS TRACES.

END OF MESSAGE

5  
4  
3  
2  
1

*[Signature]*  
WILLIAM V. BRO'S  
C/WHD

5  
4  
3  
2  
1

*[Signature]*  
EARL J. WILLIAMSON  
AC/WE/COG

RELEASING OFFICER

**SECRET**

GROUP 1  
Excluded from automatic  
downgrading and  
declassification

AUTHENTICATING OFFICER

REPRODUCTION BY OTHER THAN THE ISSUING OFFICE IS PROHIBITED.

COPY NO.

INDEX:  YES  NO  
 CLASSIFY TO FILE NO. \_\_\_\_\_ CLASSIFIED MESSAGE TOTAL COPIES \_\_\_\_\_  
 X-REF TO FILE NO. \_\_\_\_\_  
 FILL BID  RET. TO BRANCH   
 DESTROY  SIG. \_\_\_\_\_

**SECRET**

PERSON/UNIT NOTIFIED \_\_\_\_\_

PROG 30  
 ACTION *C/WH/COGS*  RID COPY  ADVANCE COPY  ISSUED  SLOTTED  RS

INFO FILE, R, CSDD, C/WH6, C/CI, CC :?, ADSP

30 Jul 67 02284  
02284

**SECRET 302022Z CITE JMWAVE 7953**

**PRIORITY DIRECTOR**

**KAPOK TYPIC AMCLEVE/15**

**REFERENCE: A. DIRECTOR 15805**

**B. DIRECTOR 15915**

**1. ANSWERS KEYED TO QUESTIONS IN REF A AS FOLLOWS:**

**A. AMCLEVE/15 DID NOT VOLUNTEER SELF TO LOCAL FBI. HE DID REPORT TO JMWAVE, WHICH IN TURN INFORMED FBI. FBI THEN APPROACHED AMCLEVE/15 ON THEIR OWN DURING LATE JULY 65 AND QUESTIONED HIM ABOUT JULY 65 DEAL.**

**B&C. JMWAVE INFORMED FBI ON 24 JULY 65 (SEE A ABOVE)**

**D. SINCE AMCLEVE/15 FAILED TO REPORT OCT 66 TRANSACTION TO JMWAVE UNTIL 9 JUNE 67, FBI NOT NOTIFIED UNTIL 15 JUNE 67. (AMCLEVE/15'S EXPLANATION FOR NOT REPORTING OCT 66 TRANSACTION WAS THAT HE "JUST FORGOT")**

**E. SEE PARA 2 BELOW.**

**F. SOURCES WERE LOCATED IN THE MIAMI AREA ONLY.**

**G. AMCLEVE/15 CLAIMS HE DID NOT RECEIVE ANY MONEY FOR OCT 66 TRANSACTION; ONLY MONEY AMCLEVE/15 EVER REPORTED**

**SECRET**

SECRET

PAGE 2 JMWAVE 7953 S E C R E T

RECEIVING WAS \$500 FROM ROSENTHAL DURING JULY 65.

ROSENTHAL HAD INSISTED AMCLEVE/15 TAKE \$500; TO AVOID ANY ROSENTHAL SUSPICION OF AMCLEVE/15, LATTER WAS INSTRUCTED BY JMWAVE TO TAKE THE MONEY. AMCLEVE/15 WAS ALLOWED BY STATION TO KEEP THE \$500.

2. AMCLEVE/15 UNABLE TO RECALL ALL DETAILS OF JULY 65 DEAL. AMCLEVE/15 CLAIMS HE ONLY PASSED TO DIEGO (BORGES) TORRES (201-254161) 6 GRENADES WHICH AMCLEVE/15 OBTAINED FROM HERMINIO (DIAZ) SANDALIO (201-203040). BORGES IN TURN PASSED THEM TO ROSENTHAL. (BORGES AND NORMAN ROTHMAN WERE ACTING AS AGENTS FOR ROSENTHAL). FRANCISCO (RODRIGUEZ) TAMAYO (201-293114) MADE SILENCERS. RODRIGUEZ AND AMCLEVE/15 JOINTLY DELIVERED THEM TO BORGES. JMWAVE RECORDS DO NOT SHOW WHERE DIAZ OBTAINED THE GRENADES.

3. AS REPORTED IN REF AMCLEVE/15 IS CURRENTLY WORKING WITH THE FBI AND FOLLOWING THEIR INSTRUCTIONS RE ROSENTHAL.

4. RE REF B. NO JMWAVE TRACES LARRAIN. AMCLEVE/15 REPORTED LARRAIN INFO TO FBI AND TO JMWAVE ON 27 JUNE 67 STATING, HOWEVER THAT IT WAS ONE DOMINGO (CHEMENDIA) ESCALANTE (201-2979485) WHO HAD SAID THAT LARRAIN WAS IN CHARGE

PARA 4

"AMCLEVE/15 REPORTED LARRAIN INFO TO FBI AND TO JMWAVE ON 27 JUNE 67 STATING, HOWEVER THAT IT WAS ONE DOMINGO (CHEMENDIA) ESCALANTE (201-297948) WHO HAD SAID THAT"

PAGE 2

0-83 3 JMWAVE 7993 S E C R E T

SECRET

OF BOMBINGS AND ROTTMAN WAS THE BOSS.

5. WOULD APPEAR HQS JUSTICE QUERIES BASED ON FBI REPORTING FROM MIAMI. WOULD IT BE OF ANY HELP IF WE GOT TOGETHER WITH BUREAU HERE TO RESOLVE IN LOCO (INFO HQS) ANY FURTHER QUESTIONS?

SECRET

BT

\* PORTION GRABED BEING SVCD

SECRET

NNNN

**DISPATCH**

CLASSIFICATION

**SECRET**

WH/COG  
PROCESSING ACTION

TO	Chief, WH	X	MARKED FOR INDEXING
INFO.			NO INDEXING REQUIRED
FROM	Chief of Station, JMWAVE		ONLY QUALIFIED DESK CAN JUDGE INDEXING
SUBJECT	TYPIC AMCLEVE/15 Contact with Frank "Lefty" ROSENTHAL		MICROFILM

ACTION REQUIRED - REFERENCES

Reference: JMWAVE-7900, 27 June 1967.

Transmitted under separate cover per reference  
 are copies of three JMWAVE memoranda to the FBI dated 24  
 July and 11 August 1965, and 15 June 1967. Subject:  
 Procurement of Arms and Munitions by American Group.

Gary L. FLUSTIKOFF

Attachments - USC  
Memos (3)

Distribution:  
8/- WH/COG

CS COPY FILED IN 14-2-4

File in  
21-300781

CROSS REFERENCE TO	DISPATCH SYMBOL AND NUMBER	DATE
UFGA-27003	JUN 30 1967	29 June 1967
CLASSIFICATION	<b>SECRET</b>	PCS FILE NUMBER
		19-132-5-192/4

TO: R.A. Ortman:jeb  
UNIT: WH/COG/NO  
REF: 7451  
DATE: 29 June 1967

MESSAGE FORM  
TOTAL COPIES

**SECRET**

ROUTING AND/OR INITIALS	
1	
2	
3	
4	
5	

CABLE SECRETARIAT DISSEMINATION

INDEX  DESTROY  RETURN TO \_\_\_\_\_ BRANCH  FILE BID

BY: 30 PER \_\_\_\_\_

NO INDEX  FILE OR CS FILE NO. 201-360985

COMP: dlwH/COG 5  RID COPY

INFO: FILE . VR dcl, oco2, e/jwH6

(classification)

(date and time filed)

(initial)

(serial)

**SECRET**

CITE DIRECTOR 15805

29 23 07 Z

TO:  JMWAVE

PRIORITY/KAPOK TYPIC AMCLEVE/15

REF: JMWAVE 7900 (w 00397)

1. FOLLOWING QUERIES FROM JUSTICE DEPARTMENT HAVE EMERGED FROM MEETINGS WITH OFFICE GENERAL COUNSEL. REQUEST REPLIES SOONEST.

A. DID AMCLEVE/15 VOLUNTEER HIMSELF TO LNERGO OR DID THEY APPROACH HIM INITIALLY. DATE FIRST AMCLEVE/15 CONTACT LNERGO.

B. WHO INFORMED LNERGO OF JULY 1965 DEAL. AMCLEVE/15 OR JMWAVE.

C. ON WHAT DATE WAS LNERGO INFORMED.

D. SAME INFO B AND C ABOVE FOR OCTOBER 1966 TRANSACTION.

E. WHAT WERE AMCLEVE/15'S SOURCES FOR ITEMS OR COMPONENTS.

F. WERE THOSE SOURCES WITHIN OR WITHOUT STATE OF FLORIDA.

G. JUSTICE HAS INFO TO EFFECT THAT AMCLEVE/15 MADE PROFIT ON OCTOBER 1966 TRANSACTION WHICH HE ATTEMPTED TURN IN

-CONTINUED-

ISSUING OFFICE

COORDINATING OFFICER  
**SECRET**

GROUP 1  
Excluded from automatic  
downgrading and  
declassification

AUTHENTICATING OFFICER

REPRODUCTION BY OTHER THAN THE ISSUING OFFICE IS PROHIBITED.

COPY NO.

MESSAGE FORM  
TOTAL COPIES

**S E C R E T**

ROUTING AND/OR INITIALS - MEM BY	
1	B
2	F
3	S
4	V
5	10

OFFICE  
UNIT  
EXT  
DATE

CABLE SECRETARIAT DISSEMINATION

BY \_\_\_\_\_ PER \_\_\_\_\_

CONF:

RID COPY

INDEX  DESTROY  RETURN TO \_\_\_\_\_ BRANCH  FILE BID

NO INDEX  FILE IN CS FILE NO.

INFO: FILE . VR .

(classification)

(date and time filed)

(serial reference number)

(page)

PAGE TWO

CITE DIRECTOR 15805

TO "THE COMPANY" WITHOUT SUCCESS. PLEASE COMMENT.

2. ALSO PLEASE ELABORATE ON STATEMENT PARA 2 REF THAT "PER JMWAVE INSTRUCTIONS AMCLEVE/15 COOPERATED WITH BORGES AND ROSENTHAL BY ACTING AS INTERMEDIARY IN PASSING SILENCERS AND GERNADES."

3. JUSTICE HAS SUGGESTED POSSIBILITY USE AMCLEVE/15 TO ASSIST ROSENTHAL OBTAIN ADDITIONAL MATERIAL AS BASIS FOR ARREST OF ROSENTHAL FOR HAVING POSSESSION OF SUCH MATERIALS. APPRECIATE JMWAVE COMMENTS.

END OF MESSAGE

OGC Mr. Bladergroon (draft)

C/WH/COG/CICS Mr. Mahoney (draft)

*by Jacob D. Esteban*  
William V. Broe  
C/WH/D

*Earl J. Williamson*  
Earl J. Williamson  
AC/WH/COG

COORDINATING OFFICERS

**S E C R E T**

GROUP 1  
Excluded from automatic  
downgrading and  
declassification

AUTHENTICATING OFFICER

RELEASING OFFICER

REPRODUCTION BY OTHER THAN THE ISSUING OFFICE IS PROHIBITED.

COPY

INDEX  YES  NO  
 CLASSIFY TO FILE NO. 201-284161  
 B-REF TO FILE NO.  
 FILE NO.  YES  NO  
 DESTROY  SIG  *Classification*

CLASSIFIED MESSAGE **B** TOTAL COPIES *21*

**SECRET**  
 PERSON/UNIT NOTIFIED

1	3
2	6
3	7
4	8

ACTION  **TRID COPY**  ADVANCE COPY  INDEXED  SLOTTED  TUBED *WAVE* *NS*

INFO FILE *201-284161* *SECRET* *CGC 2*

**SECRET** 272015Z CITE **JMWAVE 7900**

AN *WAVE*  
 INDEXED *WAVE/COG*  
 ABSTRACT  INDEX

28 JUN 67 IN 00397

PRIORITY DIRECTOR  
~~DESENSITIZED~~  
 KAPOK TYPIC ANCLEAVE/15  
 REF DIRECTOR 14671

1. ANCLEAVE/15 CURRENTLY COOPERATING WITH LOCAL FBI IN INVESTIGATION OF FRANK "LEFTY" ROSENTHAL.

2. ANCLEAVE/15 INITIALLY BECAME INVOLVED WITH ROSENTHAL IN JULY 65 WHEN DIEGO EMILIANO (BORGE TORRES (201-284161) INTRODUCED HIM TO ROSENTHAL AND NORMAN ROTHMAN. (BORGE WAS AGENT FOR ROSENTHAL IN PURCHASE OF WEAPONS AND EXPLOSIVES). PER JMWAVE INSTRUCTIONS ANCLEAVE/15 COOPERATED WITH BORGE AND ROSENTHAL BY ACTING AS INTERMEDIARY IN PASSING SILENCERS AND GRANADES FROM HERMINIO (DIAZ) SANDALIO (201-203040) AND FRANCISCO (RODRIGUEZ) TAMAYO (201-293114) TO BORGE WHO IN TURN PASSED THE MATERIAL TO ROSENTHAL.

RECORDS OFFICER STAMP  
 The following action is authorized: *Desensitized*  
*S. V. [Signature]*  
 R.O. *WAVE/COG*  
 Note: If destruction, cite reasons and coordinate if appropriate.

AN *WAVE*  
 INDEXED *WAVE/COG*  
 ABSTRACT  INDEX

3. LOCAL FBI WAS NOTIFIED AT THE TIME BUT AFTER ABOUT ONE WEEK JMWAVE INSTRUCTED ANCLEAVE/15 TO WITHDRAW HAVING DISCOVERED THAT GROUP WITH WHICH

*201-284161*  
*28 June 67*



PAGE 2 JMWAVE 7900 S E C R E T

HE WAS IN CONTACT WAS COMPOSED OF GANGSTER ELEMENTS.

4. FROM JULY 65 TO CIRCA OCT 66 ANCLEVE/15 NOT INVOLVED WITH ROSENTHAL ALTHOUGH AT VARIOUS TIMES ROSENTHAL CALLED ANCLEVE/15 AND ASKED HIS HELP OBTAIN WEAPONS AND EXPLOSIVES WHICH ANCLEVE/15 REFUSED. AROUND OCT 66 ROSENTHAL CONTACTED ANCLEVE/15 AT LATTERS RESIDENCE AND THREATENED HIM BECAUSE EQUIPMENT SUPPLIED BY BORGES TO ROSENTHAL WAS FAULTY. ANCLEVE/15 THEN MADE AND GAVE ROSENTHAL 120 PENCILS AND 50 FUSE DEVICES WHICH SEEMED TO SATISFY ROSENTHAL.

5. ANCLEVE/15 DID NOT REPORT PARA FOUR ABOVE TO JMWAVE UNTIL 9 JUNE 67 AFTER ROSENTHAL HAD AGAIN CONTACTED HIM ON 6 JUNE 67, THREATENED HIM AND ASKED HIM FOR MORE EQUIPMENT. LOCAL FBI WAS ADVISED BY JMWAVE ON 15 JUNE 67 OF ANCLEVE/15 ROSENTHAL CONTACTS OF OCT 66 AND 6 JUNE 67.

6. AS REPORTED IN PARA 3 OF REF ANCLEVE/15 CURRENTLY TRYING TO SUPPLY ROSENTHAL UNDER INSTRUCTIONS LOCAL FBI. FBI HAS PROMISED MAXIMUM SECURITY AND

PAGE 3 JMWAVE 7922 S E C R E T

PROTECTION FOR ANGLEVE/15. FBI HAS NOT NOTIFIED LOCAL  
POLICE DUE POSSIBILITY POLICE PENETRATED BY GANGSTER  
ELEMENT.

~~SECRET~~

7. ANGLEVE/15 CLAIMS NONE OF MATERIAL PREVIOUSLY  
SUPPLIED ROSENTHAL WAS OF WOPACT ORIGIN; HE ALSO CLAIMS HE  
NEVER SUPPLIED ROSENTHAL WITH C-4 EXPLOSIVES.

8. NO ADDITIONAL JMWAVE INFO ROSENTHAL AND  
ROTHMAN. NO OPS INTEREST BORGES RODRIGUEZ. DIAZ  
DECEASED.

9. POUCHING HQS COPIES OF JMWAVE MEMOS TO FBI  
UFGA-27888.

S E C R E T

BT

201-284161  
28 June 67

SECRET

28 June 1967

MEMORANDUM FOR THE RECORD

SUBJECT: Luis Clements POSADA-Carriles

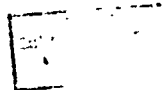
REFERENCES: a. Memo for Record, 26 June 1967, by LRH,  
same subject  
b. Williamson/Henze Telephone Conversation,  
28 June 1967

1. In my meeting with the Department of Justice today, I confirmed that POSADA-Carriles was our man. I outlined the preliminary information we had developed on the transactions between him and one Lefty Rosenthal.

2. Justice was advised that our information disclosed that POSADA-Carriles had passed silencers and grenades to Rosenthal during July 1965, and that in October 1966 he had furnished pencils and fuses. I also stated that it was our understanding that POSADA-Carriles was in contact with FBI/Miami and that it had been advised of these dealings. Justice was told that the items involved were not of Agency origin. It was emphasized, however, that this was our preliminary conclusion and that we would undertake to verify it.

3. Justice acknowledged that FBI reporting disclosed POSADA-Carriles as its contact but apparently the details are somewhat vague. To make a federal case against Rosenthal because of his suspected involvement in the bombings, it will be necessary to show that the items used were obtained through interstate commerce. A preliminary reading suggests prosecution under Title 18 Section 837. Out of concern for the allegation of entrapment, Justice asked that

*had all info  
not the same.  
only called on each of men  
see W-1-1012, 1013, 1014*



we supply answers to the following: (a) did POSADA-Carriles volunteer himself to the FBI or did it approach him initially; (b) who informed the FBI of the July 1965 deal - the Agency or POSADA-Carriles; (c) on what date was this information given; (d) similarly as regards the October 1966 transaction, the date the information furnished and by whom; (e) what were POSADA-Carriles sources for the items or their components; (f) were these sources within or without the State of Florida? And incidentally were we aware that supposedly POSADA-Carriles realized a "profit" for furnishing the October 1966 items and that he tried without success to turn it into the "company"? While I agreed to undertake to obtain the information requested, I suggested that much of it might be readily available from the FBI. Justice concurred this and intends to have further discussions with it.

4. During the course of the meeting the interesting hypothesis was suggested to the effect that POSADA-Carriles might have been "moonlighting" for Rosenthal, and only when he began to feel the pressure did he start reporting to the Agency and the FBI.

5. Under strictly controlled conditions with POSADA-Carriles acting as a conduit, Justice is considering the possibility of assisting Rosenthal to obtain his needed items, whereupon he will be arrested immediately for possession. I told them while we might be willing to have POSADA-Carriles so used we were understandably concerned over the adverse comment that our employee's involvement could generate.

6. On a matter that may be related: one Albert LARRAIN Maestre is alleged to have admitted to POSADA-Carriles that he has been involved in the bombings with Rosenthal and to have said more explosives were needed. LARRAIN Maestre is a fugitive under a narcotics indictment having formerly resided at 153 East 57th Street, New York, New York. Do we have any information on this person?

ROBERT J. BLADERGROEN  
Assistant General Counsel

OGC:RJB:mej

Distribution:

Original - Subject

1 - Signer

1 - Chrono

SECRET

WILKINSON NOTES ON  
28 JUNE TELSON W. MENZIE

AMCLEVE

15 currently cooperating FBI

Became involved R July 65

On station instructions cooperated as intermediary in passing stuff--  
silencers and grenades--at that FBI informed

Instructed to withdraw

Until Oct 66 -- was threatened -- asked to make or obtain

At this point he made certain things 150 pencils. Did not tell  
station until fairly recently

Then put in touch with LNERGO 6 June told 9 June told FBI 15 June  
\$350.00

FBI man called up north

15 wants their assistance "to disappear"

Probably not losing a great deal

RE DRAFT

28 June 1967

**NOTE FOR THE RECORD**

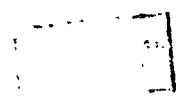
**SUBJECT: Telephone Conversation - Williamson/Hense, 1015 hours,  
28 June 1967**

1. Station reply sent 1640 hours 27 June (JMWAVE 7900).
2. AMCLEVE/15 currently on Station roles at \$350 per month. He has been cooperating with FBI.
3. During July 1965, 15 introduced to Rosenthal by third party. On Station instructions he cooperated with Rosenthal acting as intermediary in passing to him silencers and grenades. FBI informed.
4. In accordance with Station instructions, 15 broke off contact with Rosenthal.
5. On October 1966, 15 recontacted by Rosenthal. Rosenthal demanded he make or obtain additional items threatening him with bodily harm and also complaining previous items faulty. Whereupon 15 furnished Rosenthal 150 pencils and some fuses. Station only recently advised of this transaction and 15 put in contact with FBI.
6. Items furnished July 1965 and October 1966 transactions not Agency origin.
7. On 6 June, 15 again contacted by Rosenthal.
8. On 9 June, 15 reported Rosenthal contact to Station.
9. On 15 June, Station advised FBI.

NOTE  
28 Jun



RE DRAFT



10. IS wants Station assistance in doing a disappearing act.

11. IS's FBI contact now in Washington for discussions re this case.

12. Re proposal para 3 DIR 14671, Hense's immediate reaction this probably OK and we not using much but would want to check it further.

ROBERT J. BLADERGROEN  
Assistant General Counsel

STTT

MESSAGE FORM  
TOTAL COPIES 22

TO: Robert Ortman:now  
UNIT: WH/COG/MO  
REF: 7451/1948  
DATE: 26 June 1967

**SECRET**

CA	CICS
MO	CLOS
RR	CS
RS	ESEC

CABLE SECRETARIAT DISSEMINATION  
BY: 30

INDEX  DESPOY  RETURN TO  
 NO INDEX  FILE IN CE FILE NO.

CORR: e/WH/COG5  RID COPY

INFO: FILE .VR e/WHK, c/a, c/FLZ, c/F/INT

ODP, ADDP, OGC 2

(Serial)  
(Telephone number)  
14671

**SECRET**

27 00 00 Z

CITE DIRECTOR

10 PRIORITY JMWAVE

RYBAT AMCLEVE-15

IMMEDIATE HANDLING

1. DEPARTMENT JUSTICE INVESTIGATING ONE LEFTY ROSENTHAL BELIEVED TIED IN WITH MIAMI CRIME FIGURES AND INVOLVED IN SEVEN RECENT BOMBINGS MIAMI AREA.
2. ROSENTHAL ALLEGEDLY APPROACHED U.S. CITIZEN NORMAN ROTHMAN IN DOMREP WHO PUT HIM IN TOUCH AMCLEVE-15 WHOM ROSENTHAL KNOWS TO BE AFFILIATED WOFACT. ROSENTHAL CLAIMS AMCLEVE-15 SUPPLIED HIM WITH CAPS PRIMERS AND C-4 EXPLOSIVES ALSO CLAIMS OFFERED TO DISCUSS BACKGROUND BOMBINGS, WHO INVOLVED, AND WHY, WITH AMCLEVE-15 BUT LATTER INDICATED NO INTEREST.
3. ROSENTHAL REPORTEDLY ASKING AMCLEVE-15 TO SUPPLY 240 POUNDS C-4 WITH CAPS AND PRIMERS BY 1 JULY 67.
4. LOCAL POLICE INVESTIGATING SEVEN BOMBINGS BUT NOT AWARE FOREGOING DETAILS RELATIVE AMCLEVE-15.
5. APPRECIATE PRIORITY COMMENTS INCLUDING ~~ANY~~ ANY POSSIBILITY MATERIAL GIVEN ROSENTHAL COULD BE WOFACT ORIGIN.

RELEASING OFFICER

COORDINATING OFFICER  
**SECRET**

GROUP 1  
Excluded from automatic  
downgrading and  
declassification

AUTHENTICATING OFFICER

REPRODUCTION BY OTHER THAN THE ISSUING OFFICE IS PROHIBITED.

COPY NO.



MESSAGE FROM  
TOTAL COPIES

SECRET

ROUTING AND/OR INITIALS - SEEN BY	
1	6
2	7
3	8
4	9
5	10

ORIG: \_\_\_\_\_  
UNIT: \_\_\_\_\_  
EXT: \_\_\_\_\_  
DATE: \_\_\_\_\_

CABLE SECRETARIAT DISSEMINATION

BY: \_\_\_\_\_ PER: \_\_\_\_\_ # \_\_\_\_\_

CONF: \_\_\_\_\_  RID COPY

INDEX  DESTROY  RETURN TO \_\_\_\_\_ BRANCH  FILE RID

NO INDEX  FILE IN CS FILE NO. \_\_\_\_\_

INFO: FILE \_\_\_\_\_ VS \_\_\_\_\_

PAGE TWO

CITE DIRECTOR 14671

- 6. PREFER NO DISCUSSION WITH LOCAL LNERGO AT THIS TIME.
- 7. NO IDENTIFIABLE HQS TRACES ROSENTHAL. NUMEROUS LNERGO REPORTS CITE ROTHMAN FOR GAMBLING, GUN RUNNING AND OTHER SHADY ACTIVITIES IN U.S., CUBA AND MEXICO INCLUDING EFFORTS ESTABLISH ANTI-CASTRO BASE IN YUCATAN.

END OF MESSAGE

by *J. Broe*  
WILLIAM V. BROE  
C/WH/D

WH/COG/MO *[Signature]*  
OGC (Mr. Bladergreen in draft)

*E. J. Williamson*  
EARL J. WILLIAMSON  
AC/WH/COG

RELEASING OFFICER

COORDINATING OFFICERS

SECRET

GROUP 1  
Excluded from automatic  
downgrading and  
declassification

AUTHENTICATING OFFICER

REPRODUCTION BY OTHER THAN THE ISSUING OFFICE IS PROHIBITED.

COPY NO.

26 June 1967

MEMORANDUM FOR THE RECORD

SUBJECT: Luis Clemente POSADA-Carriles

1. The Department of Justice has been investigating one Lefty Rosenthal whom they believe to be tied in with key members of organized crime in the Miami area and who also they believe has been involved in seven recent bombings in the Miami area. According to the information the Department has gotten so far, Rosenthal went to a United States citizen named Norman Rothman in the Dominican Republic and through him directly or indirectly through a person known as Diego, Rosenthal was put in touch with Luis Clemente Posada-Carriles.

\_\_\_\_\_ Rosenthal understands that Posada-Carriles is attached to CIA and claims that Posada-Carriles supplied him with caps, primers and C-4 explosives. Rosenthal is reported to have offered to talk to Posada-Carriles about the background of the bombings and who was involved and why, but Posada-Carriles said he had no interest in the background.

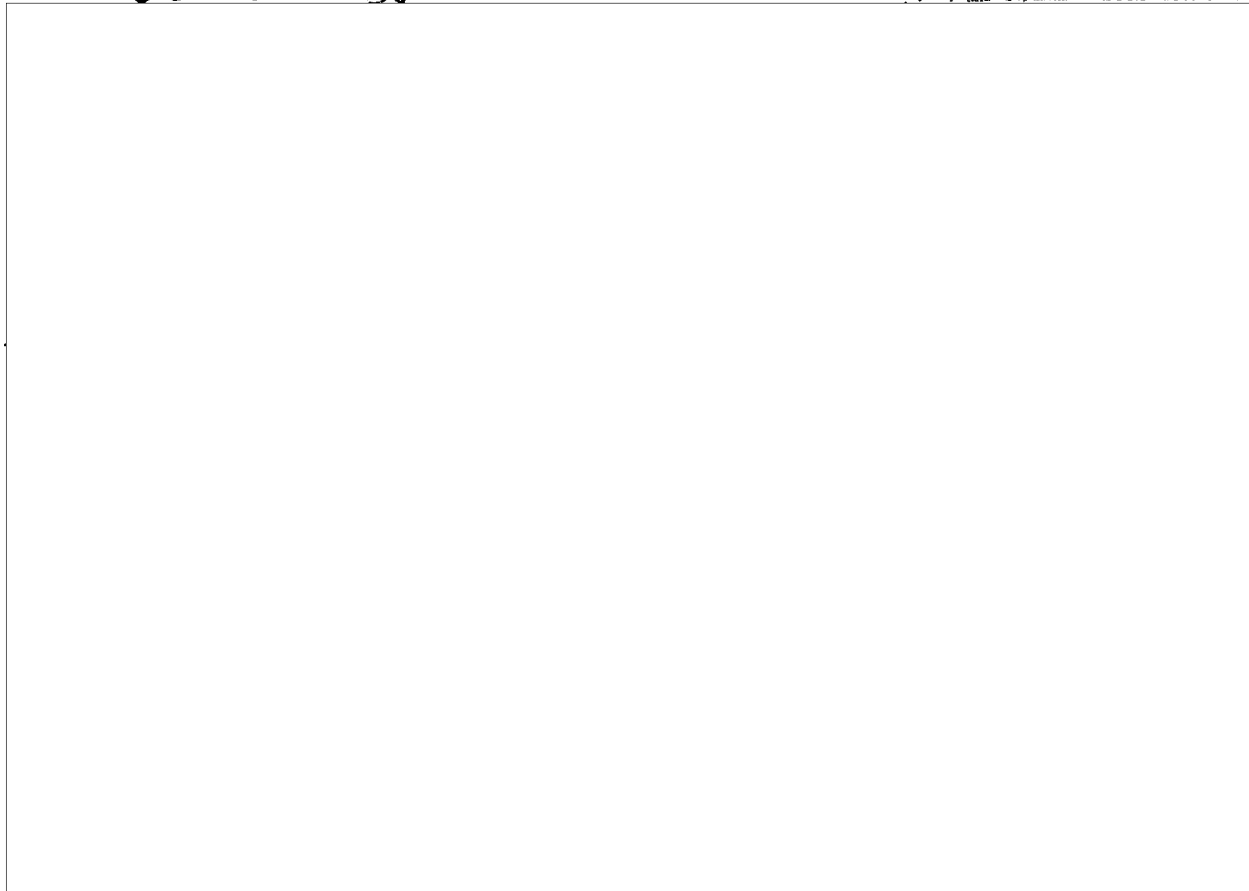
2. Rosenthal is reported to be asking Posada-Carriles to supply 240 pounds of C-4 explosives with caps and primers by Saturday and has told Posada-Carriles that twenty more bombings are scheduled. The local police are investigating the seven bombings which have taken place and do not know this other background material.

3. Justice would very much like to have Rosenthal prosecuted and accordingly would like to have the explosives delivered to Rosenthal but to have 99% of it faulty and have the state prosecute him on the possession of the 1% of valid explosives. The Justice Department has a report from the

Bureau's Security Squad reporting to the Bureau's Organized  
Crime Division which states that Focada-Carriles is a CIA  
Agent in a GS status.

LAWRENCE R. HOUSTON  
General Counsel.

Luis Pasada caules



A series of horizontal ruled lines for writing, consisting of a solid top line, a dashed middle line, and a solid bottom line. There are approximately 10 lines visible, extending across the width of the page.

Shawkes

SECRET		POSITIONS
TO :	Chief, Western Hemisphere Division	
FROM :	Chief of Station, London	
FROM :	Chief, European Division	
FROM :	Chief of Station, JMWAVE	
SUBJECT: Declining Importance of MINCEX In Cuban Government		4P

During JMWAVE debriefing on 11 April 1967, AIRIVER-L provided the following information on the above subject:

1. As of March 1967, the role of MINCEX in the Cuban Government, including the Commercial Office in London, was less important than it had been two years earlier. During those two years, MINCEX lost a substantial portion of its functions and operating elements. Beginning early in 1966, Cubana de Aviacion made its own purchases abroad without the assistance of the MINCEX Commercial Offices. CUBATABACO, formerly an operating element of MINCEX, was abolished late in 1966 and its functions were taken over by an independent enterprise called Empresa Cubana del Tabaco with headquarters in Havana. In April 1967, CUBARIBANA, an operating element of MINCEX, was scheduled to be abolished and replaced by Instituto del Libro with headquarters in Havana. In January and February 1967, the GCC was studying the feasibility of transferring CUBAZUCAR, an operating element of MINCEX, to the Sugar Ministry.

SOURCE COMMENT: This trend of events appears to indicate that in the future MINCEX functions will be further reduced and possibly even eliminated completely.

DISTRIBUTION:  
 1 - WFO/CCG  
 2 - Chief, EUR Division 200-747424  
 2 - CCS, London

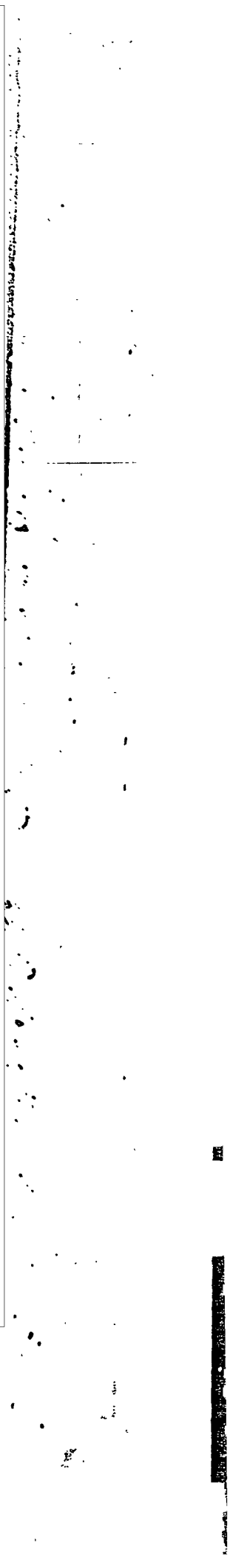
GS 0071

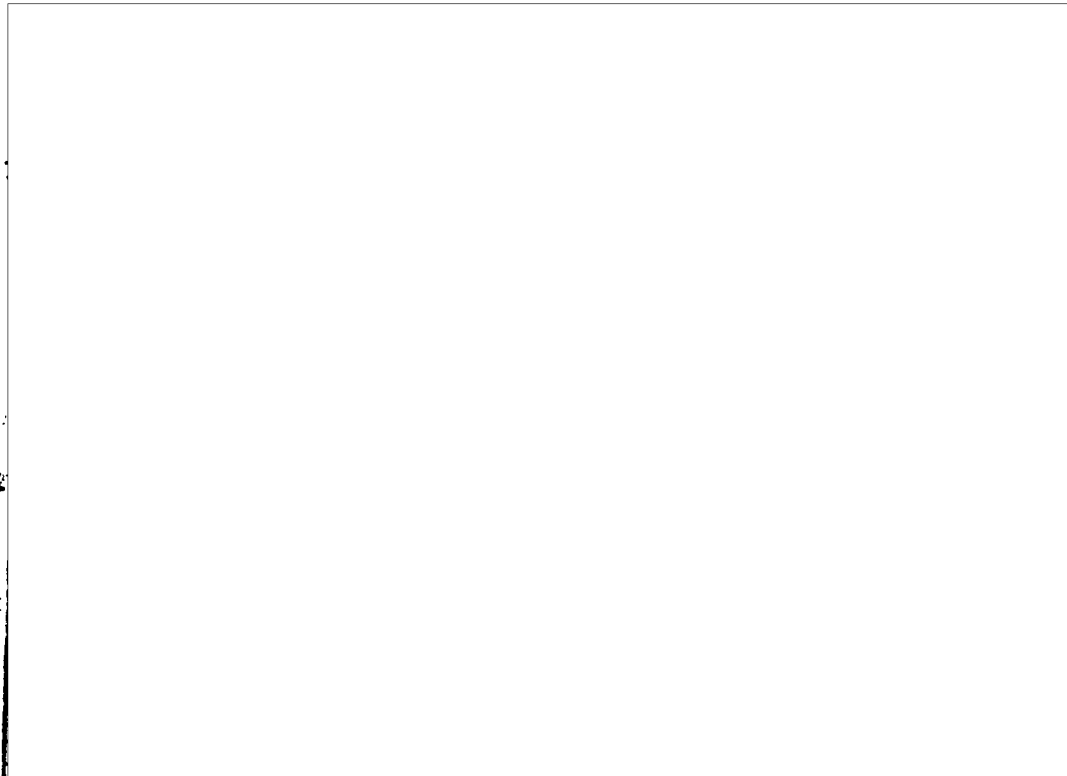
PROGRAM REFERENCE TO E-201-747424	DATE FILED	DATE DELETED
	26 Apr 67	May -3 1967
CLASSIFICATION SECRET	DISPATCH SYMBOL AND NUMBER	
	UFGA-27448	
DISPATCH SYMBOL AND NUMBER 10 - 120 - 31		

APERTURE CARD REPRODUCTIONS

2. During 1966 and early 1967 various CCC enterprises sent their own purchasing missions to London thereby eliminating the need for the Commercial Office to make purchases for them. For example, the Basic Chemistry Mission headed by Francisco VIGORAL Pico and Rafael VASQUEZ (the last) arrived in London late in 1966 to make chemical purchases. Late in 1966, the Cuban Telephone Company sent Roberto VIGORAL Carmona to London for telephone equipment and supplies. In February 1967, a mission from the Ministry of Construction arrived in London to purchase heavy construction equipment. This mission was headed by Fernando DOMINGOS Hernandez.

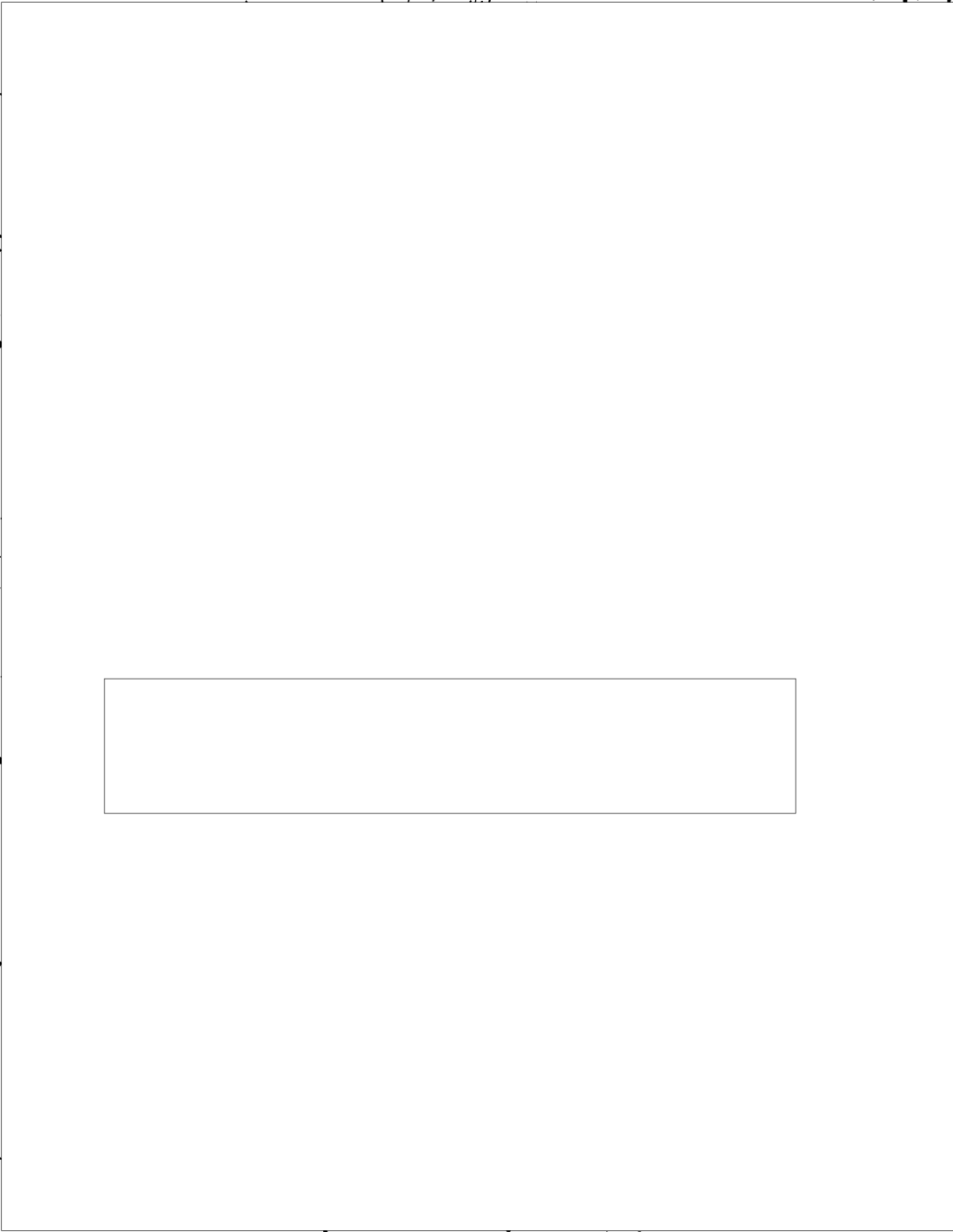
3. The chain of events which heralded the reduction in importance of the Commercial Office in London began with the assignment of persons of a much lower level of competence than those who preceded them. Examples of persons recently assigned to the Commercial Office in London who had only six or seven years of schooling and little or no experience in foreign trade or business are Marcos PEREZ Ruiz, representative of CUBAVICAR; Orlando ROMERO Crespo, representative of MEDICUBA, QUIMPORT and acting representative of CUBATEX and CONSUMIEXPORT; and Ruben GUAL Yero, representative of MAQUILLPORT and FERRIEXPORT. The qualification of PEREZ apparently was that he was a member of the Communist Youth organization, and the qualifications of ROMERO and GUAL apparently were that they were Communist Party members.

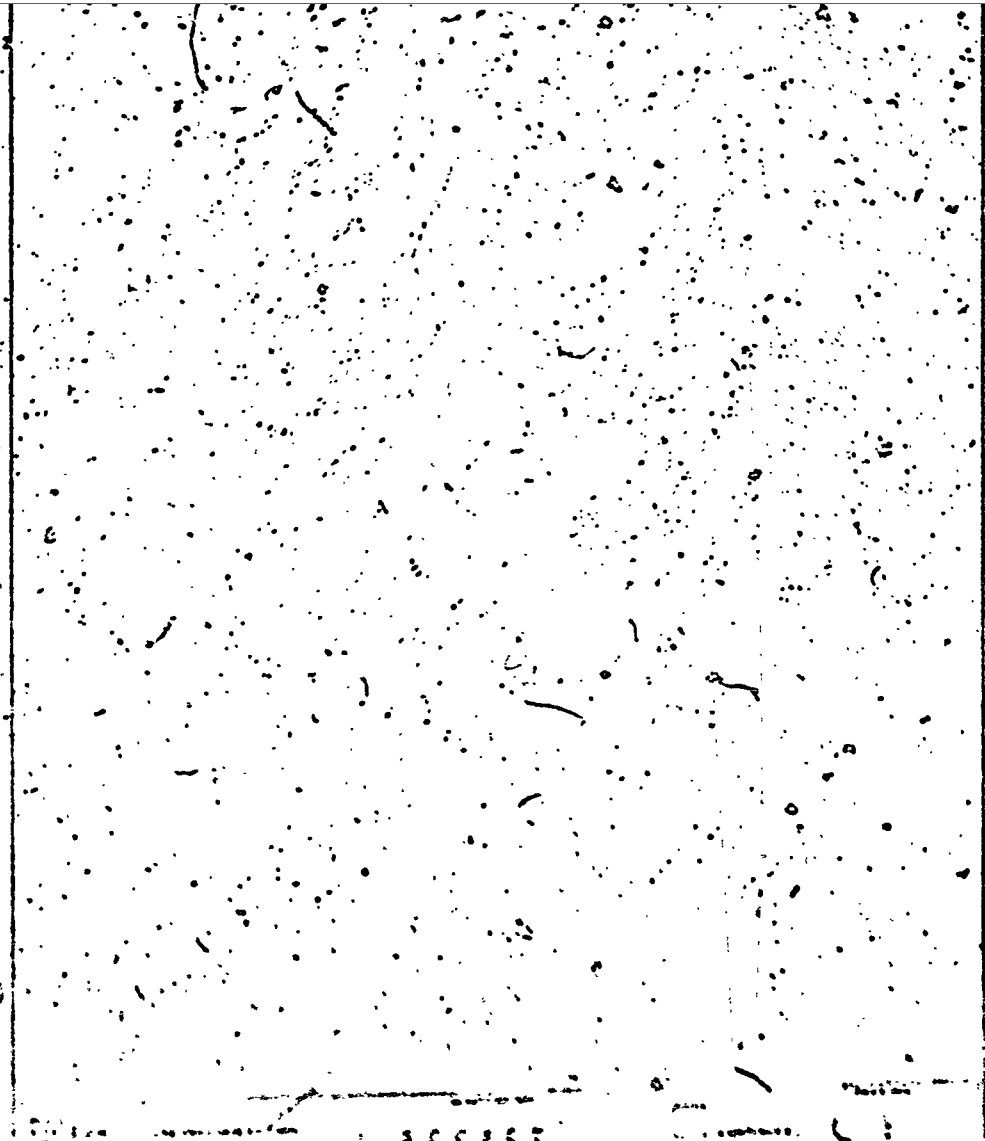
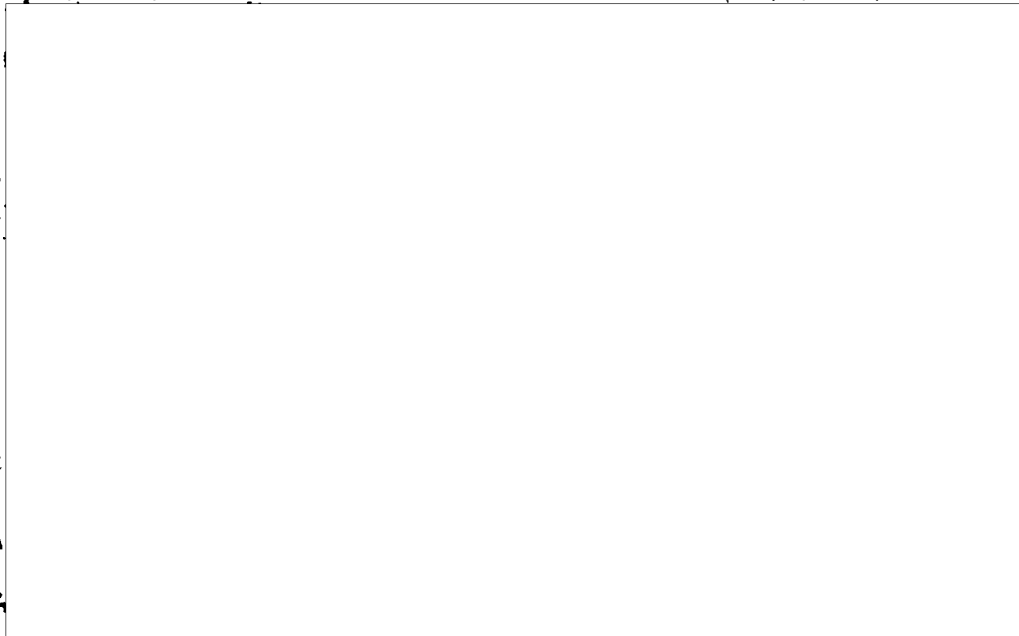




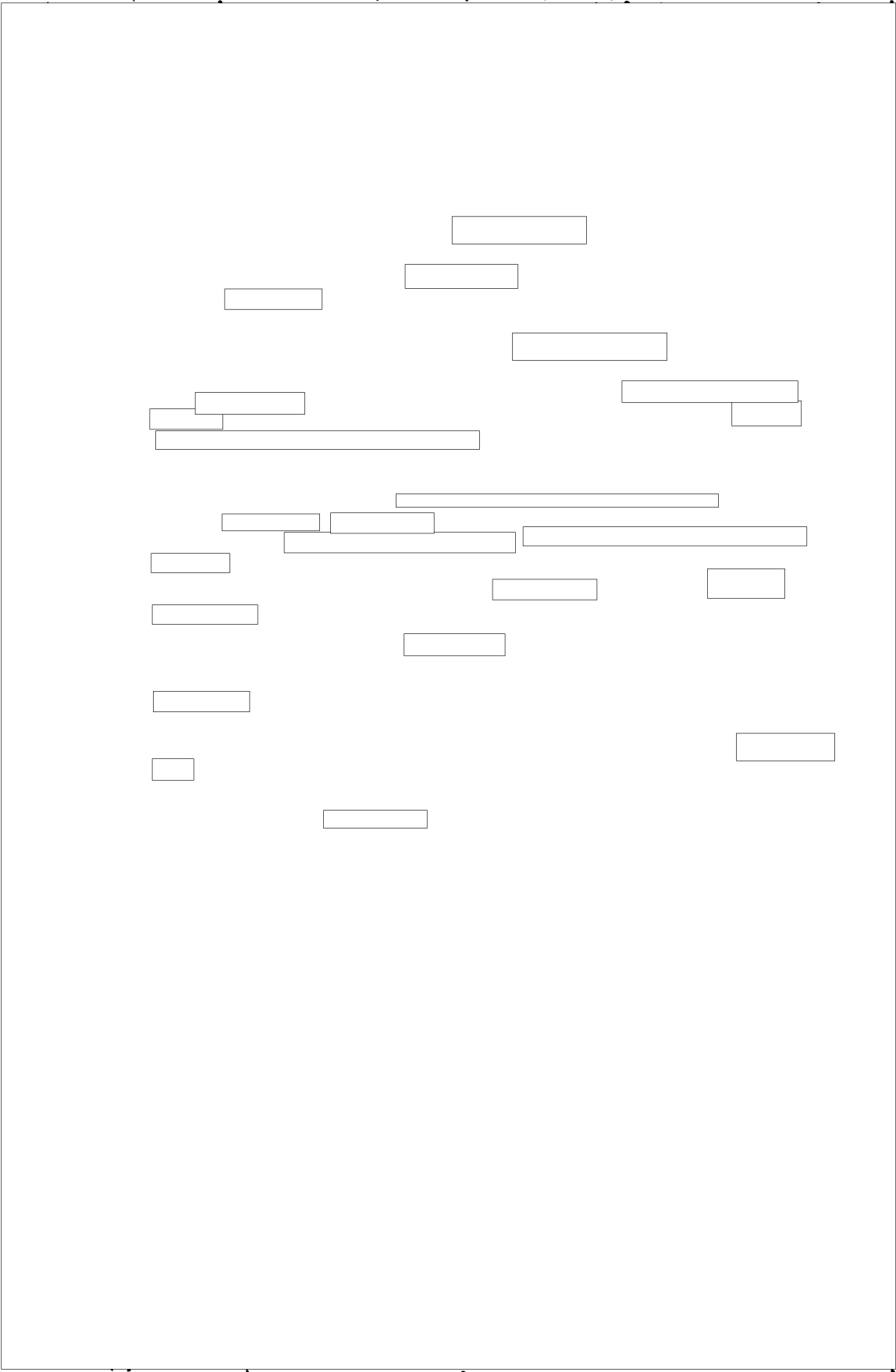
201-			
SEX	DATE OF BIRTH	COUNTRY OF BIRTH	CITY/TOWN OF BIRTH
CITIZENSHIP	OCCUPATION		RESIDENCE
OTHER NAMES - STATE TYPE (LAST, FIRST, MIDDLE)			
ADDITIONAL INFORMATION			
201-			
SEX	DATE OF BIRTH	COUNTRY OF BIRTH	CITY/TOWN OF BIRTH
CITIZENSHIP	OCCUPATION		RESIDENCE
OTHER NAMES - STATE TYPE (LAST, FIRST, MIDDLE)			
ADDITIONAL INFORMATION			
201-			
SEX	DATE OF BIRTH	COUNTRY OF BIRTH	CITY/TOWN OF BIRTH
CITIZENSHIP	OCCUPATION		RESIDENCE
OTHER NAMES - STATE TYPE (LAST, FIRST, MIDDLE)			
ADDITIONAL INFORMATION			
201-			
SEX	DATE OF BIRTH	COUNTRY OF BIRTH	CITY/TOWN OF BIRTH
CITIZENSHIP	OCCUPATION		RESIDENCE
OTHER NAMES - STATE TYPE (LAST, FIRST, MIDDLE)			
ADDITIONAL INFORMATION			
201-			
SEX	DATE OF BIRTH	COUNTRY OF BIRTH	CITY/TOWN OF BIRTH
CITIZENSHIP	OCCUPATION		RESIDENCE
OTHER NAMES - STATE TYPE (LAST, FIRST, MIDDLE)			
ADDITIONAL INFORMATION			
201-			
SEX	DATE OF BIRTH	COUNTRY OF BIRTH	CITY/TOWN OF BIRTH
CITIZENSHIP	OCCUPATION		RESIDENCE
OTHER NAMES - STATE TYPE (LAST, FIRST, MIDDLE)			
ADDITIONAL INFORMATION			
201-			
SEX	DATE OF BIRTH	COUNTRY OF BIRTH	CITY/TOWN OF BIRTH
CITIZENSHIP	OCCUPATION		RESIDENCE
OTHER NAMES - STATE TYPE (LAST, FIRST, MIDDLE)			
ADDITIONAL INFORMATION			
201-			
SECRET			
4024			

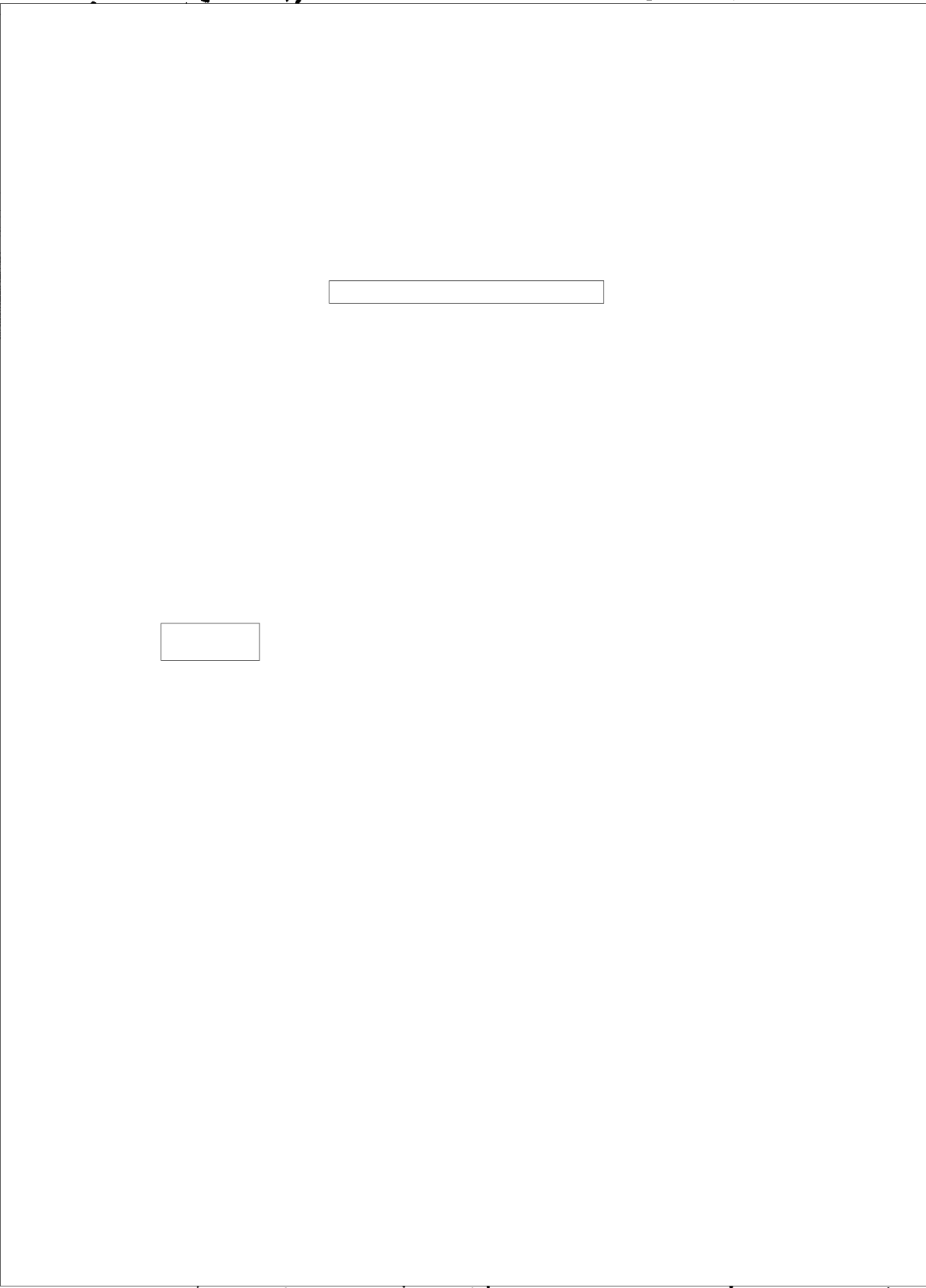






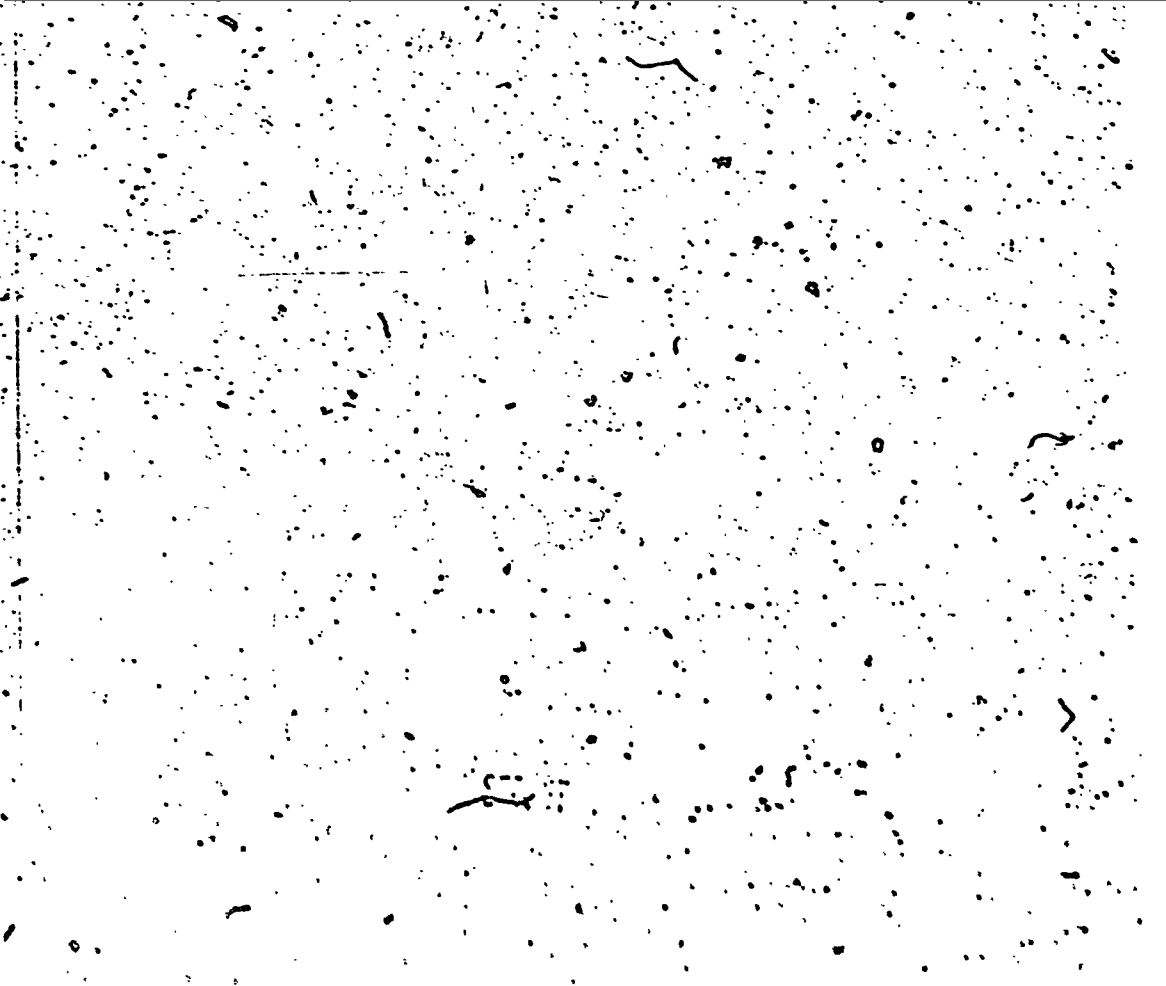
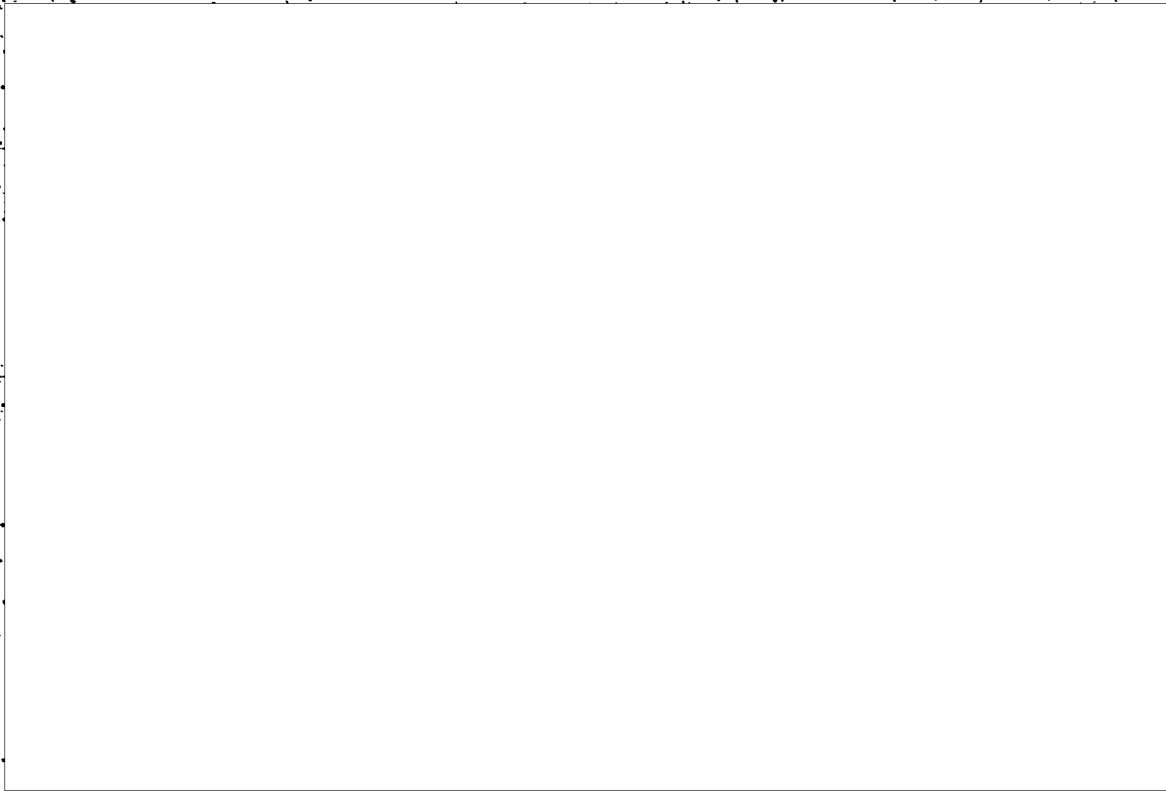


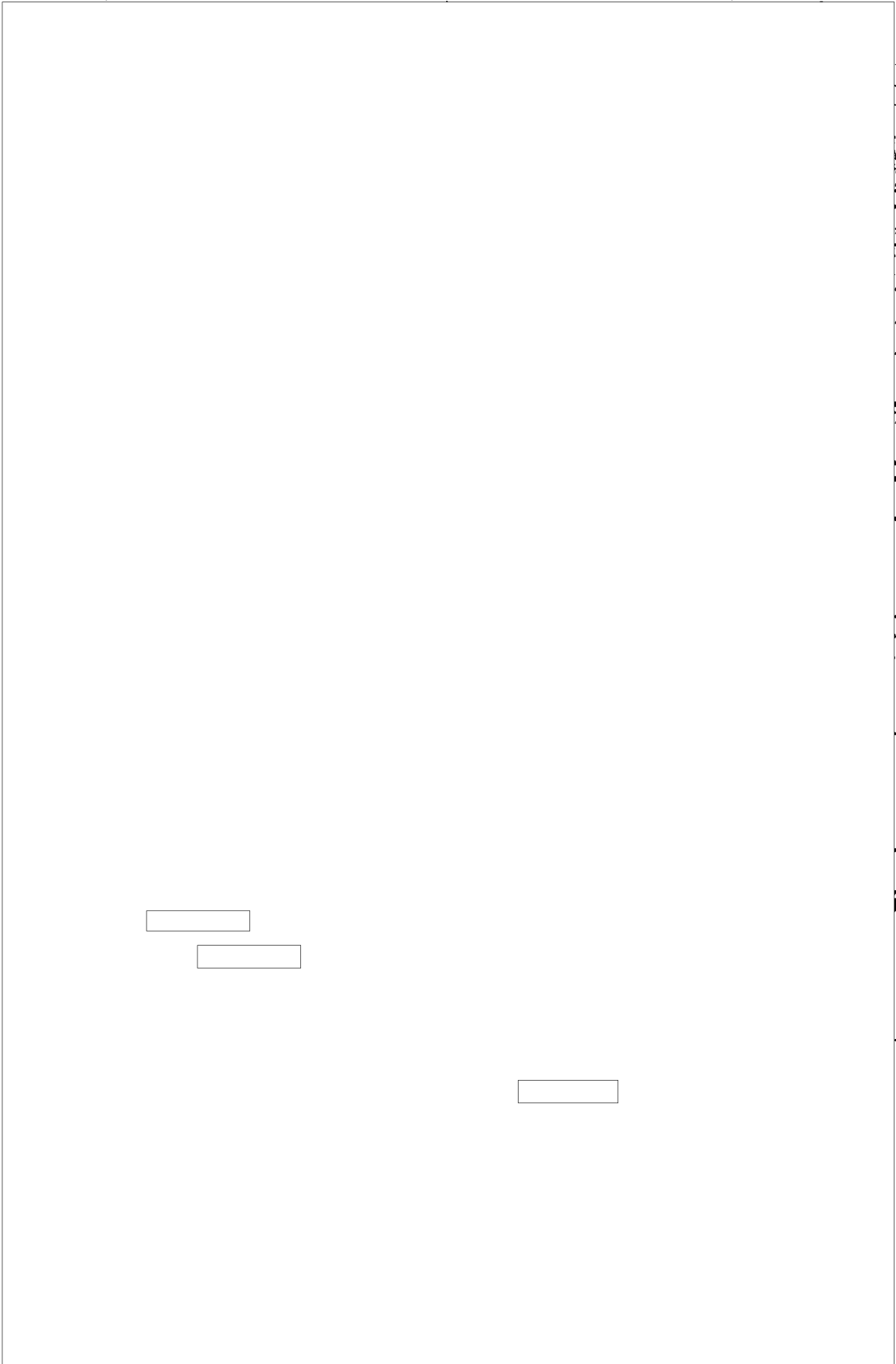




(over 30)

SECRET





(over to 2)

14-00000

