

Description of JMWAVE Components

Support Branch

The Support Branch provided routine administrative services to JMWAVE. These included finance, logistics and records management and clerical support. The Branch had 19% of JMWAVE's staffing.

Operations Branch

The Operations Branch was divided into two sections, the FI Section and the Special Operations Section. Staffing, consisting of operations officers and clerical support, was 17% of JMWAVE's total.

The FI Section (Foreign Intelligence) was responsible for the collection of intelligence from the target country through covert HUMINT means.

The Special Operations Section was responsible for paramilitary operations.

Covert Action Branch

The Covert Action Branch was responsible for covert propaganda operations. Staffing was 10% of JMWAVE's total and consisted of operations officers and clerical support.

External Operations Branch

The External Operations Branch was responsible for collecting HUMINT on the target country through assets in areas other than the target country. Staffing was 13% of JMWAVE's total and consisted of operations officers and clerical support.

Reports Section

The Reports Section prepared intelligence reports for Headquarters and intelligence community consumers. Staffing was 10% of JMWAVE's total.

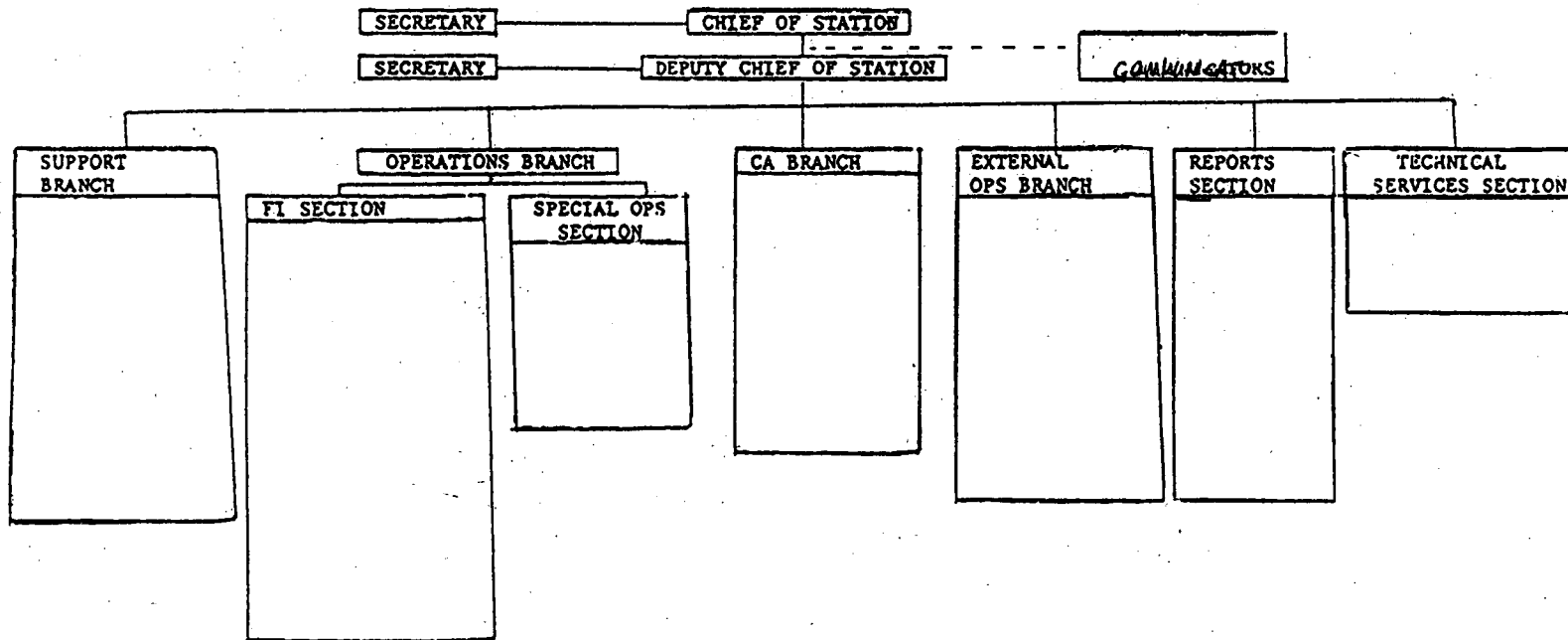
Technical Services Section

The Technical Services Section provided photographic support to JMWAVE. Staffing was 6% of JMWAVE's total.

Communicators

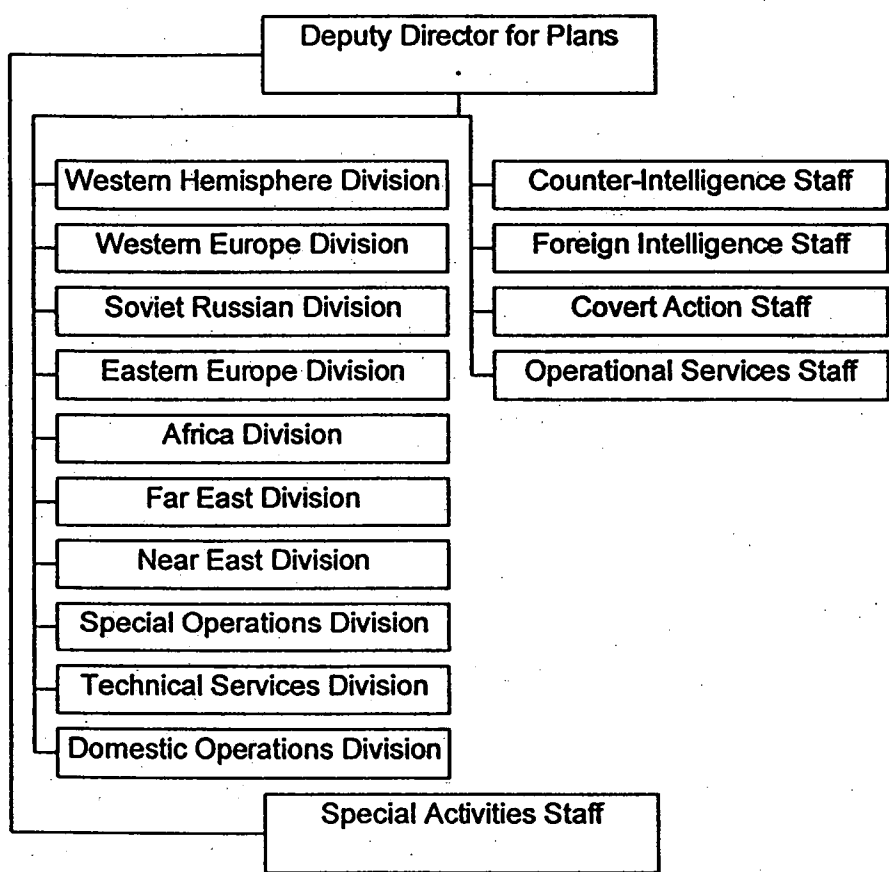
The communicators were responsible for secure communications between JMWAVE and Hqs. Staffing was 8% of JMWAVE's total.

JMWAVE
ORGANIZATION



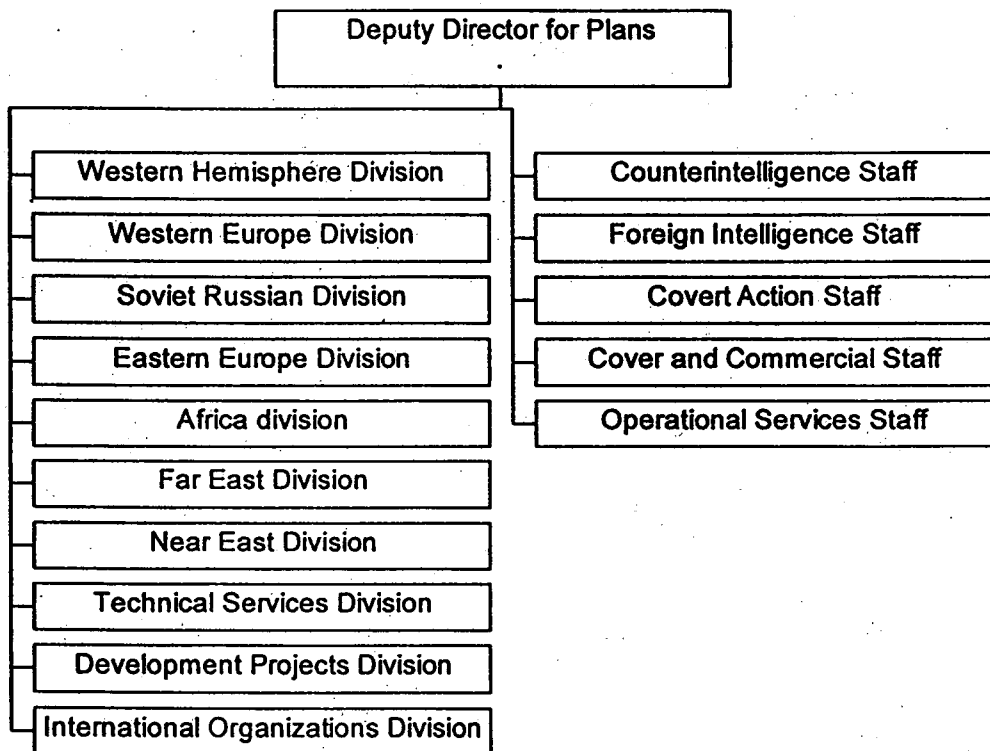
4/10/98 - OKd
vgy DO/IRi
EW

DEPUTY DIRECTOR FOR PLANS - 1963

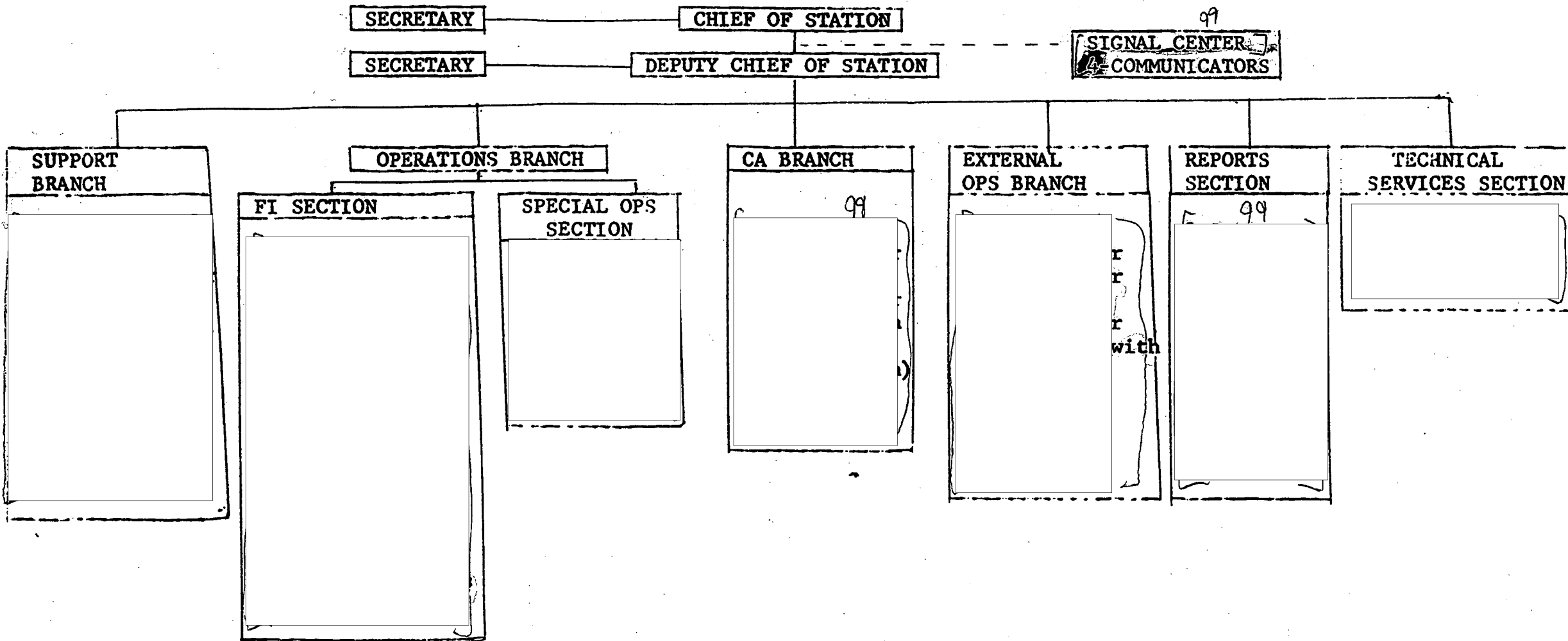


4/19/98 OK by
Dol/128
ew

DEPUTY DIRECTOR FOR PLANS - 1961



JMWAVE ORGANIZATION



1/1/8