

2.

**SECRET**

14 July 1978

SUBJECT: "Angelo"

"Angelo"

dpob:

Physical description as of 1963

Appeared to be either Cuban or Mexican, or Cuban with characteristics associated with Mexicans.

Claimed "Angel" was war name used to raise funds for the JURE organization.

Trace Information

- a. One Angelo HERNANDEZ  
is input in the LA/MP system as a suspect member of the CUIS, and possibly a GOC infiltrator. No photo.
- b. One Jose ANELLO  
is input in the LA/MP system as a DSE interrogator at the DSE office in Havana. 6'tall, 170 lbs., brown hair and brown eyes, Caucasian. No photo on Cuba Desk.
- c. One Martin ANELLO Meijides  
is input in the LA/MP system as DSE member, stationed at CMUN New York in 1965. Photo attached.
- d. One Marios ANGELO (No photo Cuba Desk)  
born circa 1923 in Cuba, is cited in an Army report, dated 3 January 1963, as about 40 years, 6'2" tall, 200 lbs, light complexion, and a member of the G2 in Moron,

**SECRET**

"Angelo"

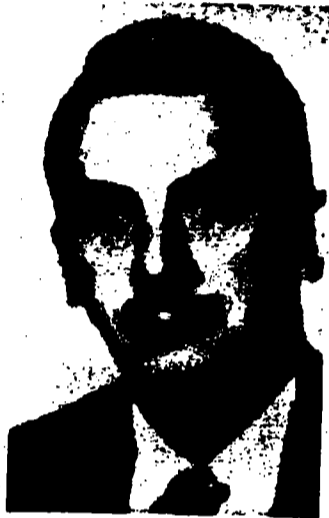
**SECRET** 2 -

Cuba. The subject of the report, Leonor Ezequiel JIMENEZ-Valdera, knew Angelo by sight only, since sometime in 1960. In about 1961 JIMENEZ knew that Angelo was a member of the G-2, because Angelo rode in the car used by the G-2 to apprehend anti-Castro suspects. In November 1961, JIMENEZ witnessed a trial in Camaguey, Cuba, at which Angelo was present as the official in charge of the prisoners from Moron who were on trial. A Cuban national known to JIMENEZ only as Moralito accompanied Angelo everywhere.

e. Attached are LA/MP input sheets, for your information, on Angelo HERNANDEZ, Jose ANELLO, and Martin ANELLO Meijides.

**SECRET**

**SECRET**



Martin ANELLO Meijides Circa 1963

**SECRET**

SECRET

00A00	A	137030				
00A00	B	HERNANDEZ	ANGELO			T
00A00	C	CUBA				M
00A00	D	CUBA				
A 99A01	B	HERNANDEZ	ANGELO			T
A 99A01	C	CUBA				M
A 99A01	D	CUBA				
68A01	J	MEMBER SUSPECT				
68A01	K	CUIS				
68A01	L	POSSIBLY GOC INFILTRATOR				
68A01	N	USA ?		68		OPEN
68A01	U		UFAX-00002			09 AUG 68
A 99A01	U		UFAX-00002			09 AUG 68

00A00	A	137329				
00A00	B	ANELLO	JOSE			T
00A00	C	CUBA		CA 33		M
00A00	D	CUBA				
A 99A01	B	ANELLO	JOSE			T
A 99A01	C	CUBA		CA 33		M
A 99A01	D	CUBA				
64A01	E	BRO	TALL/6/00	170		
64A01	F	BRO	CAUCASIAN			
64A01	G	MILITARY OFFICER				LT
64A01	H	CUBA ARMY				
64A01	J	INTERROGATOR				
64A01	K	CUIS	DSE			
64A01	L	INTERROGATED SOURCE AT DSE OFFICE HAVANA				
64A01	N	CUBA HAVANA	HAVANA	66		OPEN
64A01	V	FBI	DBB 96370	19 5 30		06 OCT 67
64A01	W	DEBR JUAN DE JESUS CABRERA VALIENTE REFUGEE				
A 99A01	V	FBI	DBB 96370	19 5 30		06 OCT 67
A 99A01	W	DEBR JUAN DE JESUS CABRERA VALIENTE REFUGEE				

00A00	A	121860	201-0759319			
00A00	B	ANELLO	MARTIN	MEJIDES		T
00A00	C	CUBA-HAVANA	HAVANA	30 JAN 24		M
00A00	D	CUBA				
00A00	O	KIN WIFE JOSEFINA MARTIN MEJIAS 03 MAR 30				
65A01	A			DIPT		
66A01	A			DIPT		
A 99A01	B	ANELLO	MARTIN	MEJIDES		T
65A01	D		000064504			
66A01	D		SO0E66313			
A 99A01	C	CUBA HAVANA	HAVANA	30 JAN 24		M
A 99A01	D	CUBA				
65A01	O					MB/01/913
A 99A01	O	KIN WIFE JOSEFINA MARTIN MEJIAS 03 MAR 30				
65A01	G	ATTACHE & CODE CLERK		OCT 65		DIP/CMHO
65A01	H	CMUN NEW YORK				
66A01	G	CODE CLERK				CMHO
66A01	H	COMMERCIAL OFF/MONTREAL				
65A01	J	MEMBER				
65A01	K	CUIS				
66A01	J	MEMBER				
66A01	K	CUIS	DSE			
65A01	N	USA NEW YORK	NEW YORK	OCT 65		03 OCT 66
65A01	Q	PCS				
66A01	N	CAN	MONTREAL	05 DEC 66		NOV 67
66A01	Q	PCS				
66A02	N	CUBA		03 OCT 66		05 DEC 66
67A01	N	CUBA		NOV 67		OPEN
66A03	R	CERVANTES	HUGO ELIECER	AGUILERA		196553
66A03	S	CAN	MONTREAL	05 DEC 66		CA DEC 66
65A03	T	ANELLO REPLACED CERVANTES				
66A03	U		DIR 70487			27 JAN 67
65A01	U	INDEVOUT/3	NYDO-1275 IN-77071			21 OCT 65
66A01	U		DIR 70487			27 JAN 67
66A02	U		DIR 70487			27 JAN 67
67A01	V		DIR 89221			05 APR 68
A 99A01	U	INDEVOUT/3	NYDO-1275 IN-77071			21 OCT 65