

Cattle kingdom began before civil war.

By 1860 there were 3 million cows -

price for cow in Texas 1865 \$4 - in east it cost \$40  
In 1866, 260 thousand cows left Texas

Joseph McCoy - established rail depot for cattle.

Railroad brought immigrants - towns

barbed wire was invented by ~~John~~ <sup>Lyman</sup> Glidden in 1873

effects of barbed wire

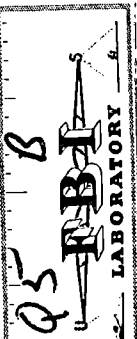
a) decline cattle kingdom

b) no range -

c) methods of breeding proved.

Search for water in great plains.

Making wells - 300 feet deep -



D-680606001 Q5 AT



# The West.

Great plains -

In West rivers were disadvantages to people.  
High winds hot winds disturbed the people.  
All great plain Indians - were nomads - not  
agricultural - they adopted the horse  
before white men came.

1540 - 1550 - there was horse culture in G.P.

2 types of horse culture in U.S.  
horse didn't change G.P. Indians  
No settled village life

they were least civilized

Cherokees - owned slaves -

G.P. Indians were most warlike  
they were great horsemen.

Pomonahe tribe were ~~no~~ best horsemen.

Spaniards were first to force G.P. Indians  
Lewis Clark Expeditor 1803

Long named G.P. - Great American Desert.

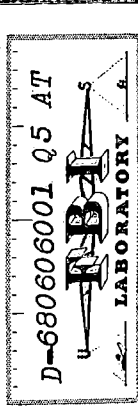
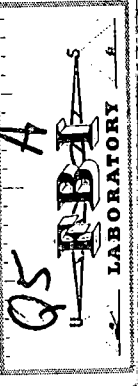
It took 17 persons per mile to die across G.P.  
no water routes -

Caronads - not G.P. - desert also.

Development of colt revolver - helped against <sup>Indians</sup> in 1838

at Battle of Peotomdo - colt - man

greatest adaptation to G.P. was cattle Kingdom



Slavery -

History

1) it was for life -

life of free slave was more difficult than the slave.

In Latin America -

Slave may be freed by purchase - ~~many~~ heroic, court

In U.S. there was no legal slave marriage

slave children were not baptized

In Latin America - slaves were baptized - and marriages legalized by priest.

Slaves could marry non-slaves.

The slave had no legal status - in U.S.

In Latin America - slave was paid 2 hrs per day - 85 days per year - to own buy property and freedom.

In Latin Amer. slaves owned other slaves -

الموسيقى الزنجية في أمريكا أصلت من بلاد بني إزيبيا

Why did Samba character last?

South claimed to have a more <sup>superior</sup> affluent culture.



analysis

Q5 A FBI LABORATORY

D-680606001 Q5 AT FBI LABORATORY

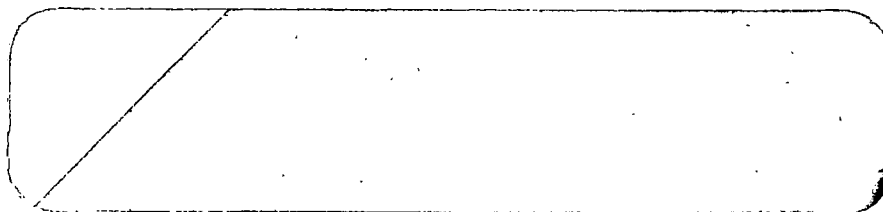
D-680606001 Q4 AT  
FBI  
LABORATORY

**U. S. TREASURY DEPARTMENT**  
INTERNAL REVENUE SERVICE-DISTRICT DIRECTOR  
300 NORTH LOS ANGELES STREET  
LOS ANGELES, CALIFORNIA 90012

POSTAGE AND FEES PAID  
INTERNAL REVENUE SERVICE

OFFICIAL BUSINESS

*RFK must be disposed of like his brother was*



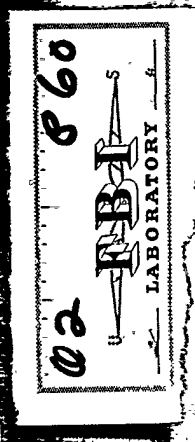
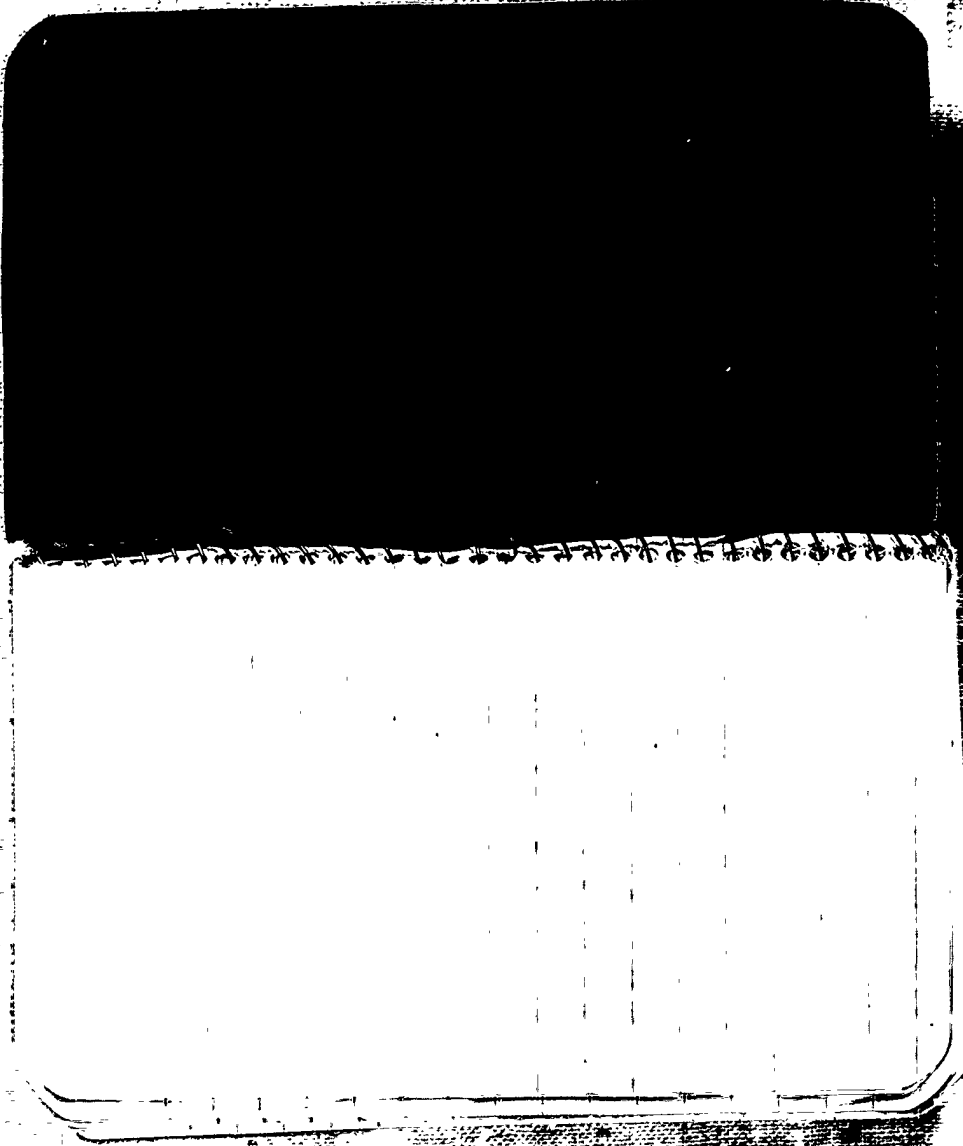
46

*reactionary*

E-1

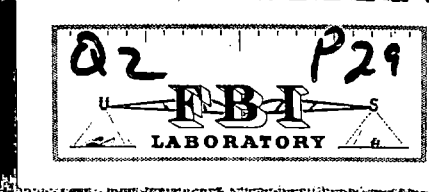
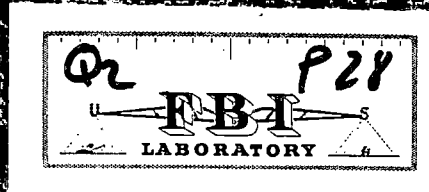
D-680606001 Q4 AT

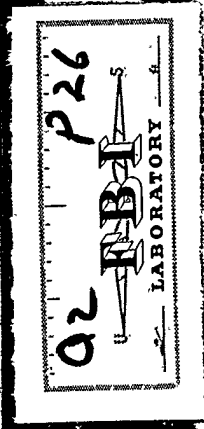
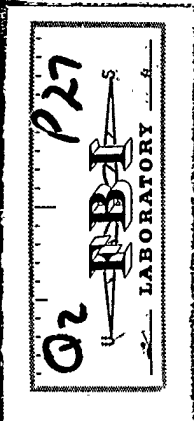
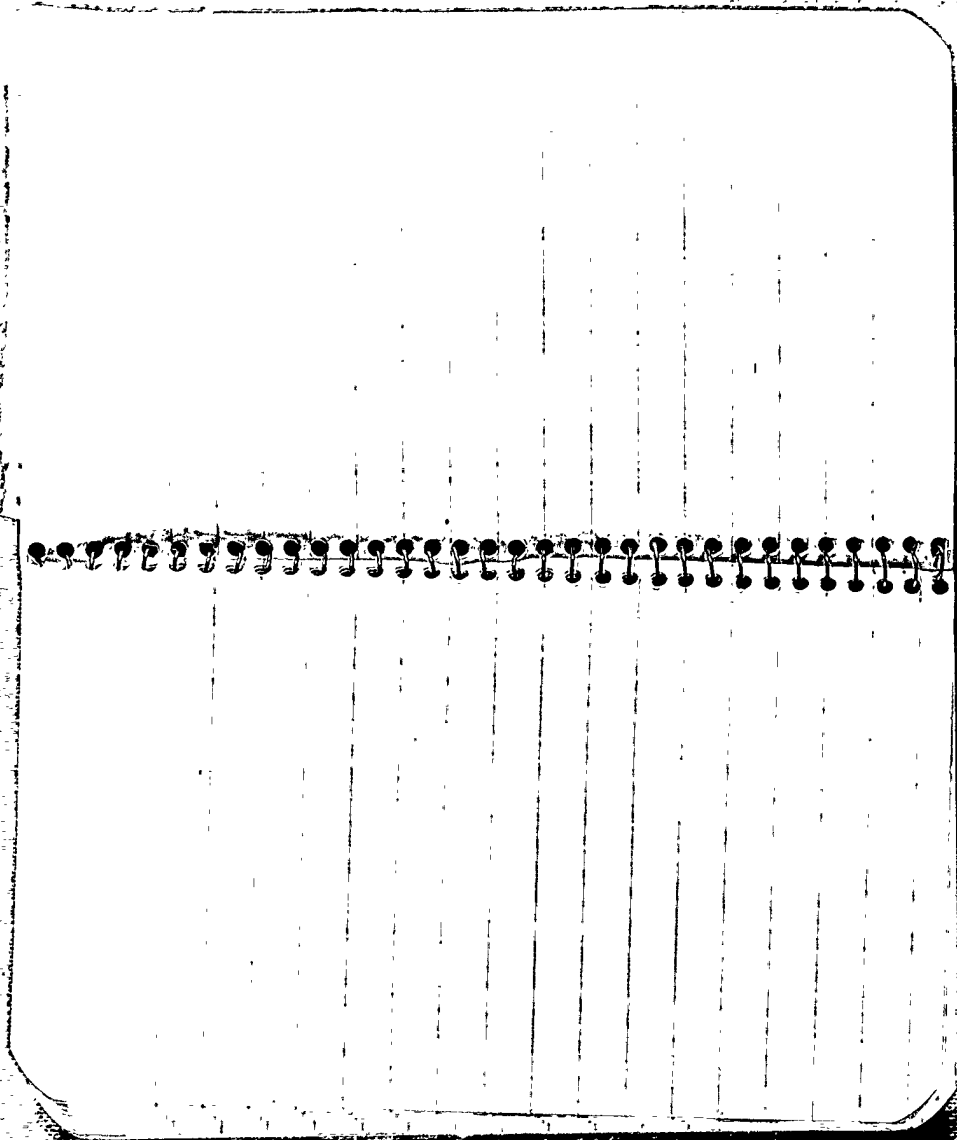
**FBI**  
LABORATORY



Pages 30-59  
ARE BLANKS—  
Not Photographed

با عیبی تارامترا  
No Smok





PAGES 10-25  
ARE BLANKS —  
NOT PHOTOGRAPHED.

Argonaut Ins. Co.  
1001 Wilshire Blvd.  
Los Angeles, Calif.  
JA 90017

Q2 P9  
FBI  
LABORATORY

Q2 P9  
FBI  
LABORATORY

James -  
64

02 PC  
FBI  
LABORATORY

Q2 P7  
FBI  
LABORATORY

Gilbert vs. Hollopeter  
Von Downie's testimony

Q2 P-4  
FBI  
LABORATORY

Q2 P-5  
FBI  
LABORATORY

Monday

① See Mrs. Thurber -

② Make appt. with Person

③ See John

④ See E. Lewis

⑤ Check data on police off.

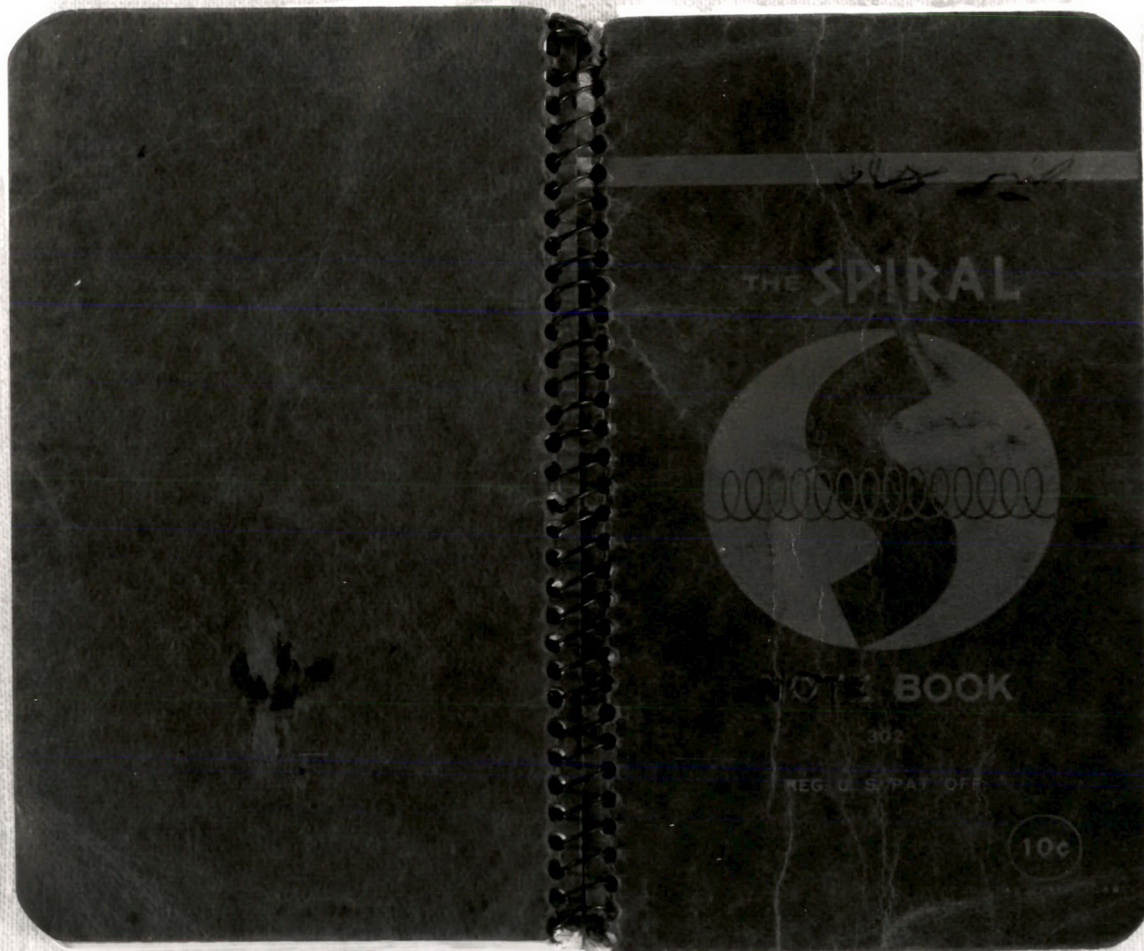
Room 116 - City Hall



Hollopeter  
234 E. Colorado  
Pasa-

Marcos  
215 - W. Fifth  
L.A.

Q2 P1  
FBI  
LABORATORY



D-680606001 Q2 AT  
— **FBI** —  
— LABORATORY —

LA 56-156

EXHIBIT 18

The following photographs were made from documents and writings found in the room of Sirhan Sirhan, 696 East Howard, Pasadena, California, on 6/5/68